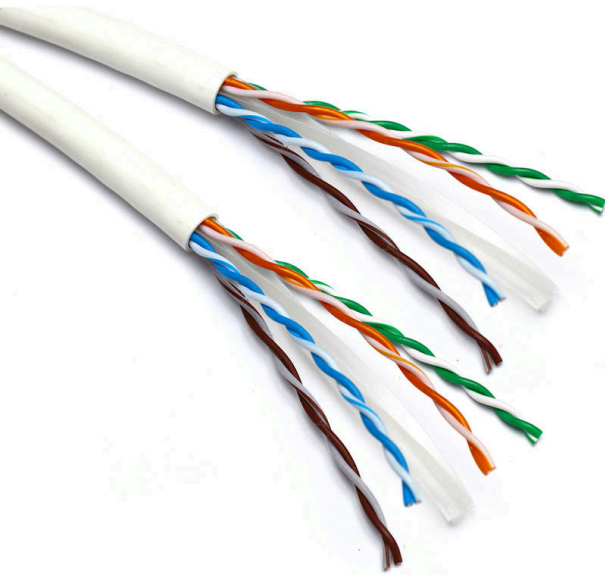


Excel Solid Cat6 Dual Cable U/UTP LSOH CPR  
Euroclass Dca 500 m Reel White

Item Code: 100-103



- ✕ Dual Cat6 Copper Cable
- ✕ U/UTP No Overall Screening
- ✕ No Conductor Screening
- ✕ Outer sheath colour White
- ✕ Reaction-to-fire class according to EN 13501-6: Dca
- ✕ Smoke development class according to EN 13501-6: s2

Product Overview

Excel solid Dual Cat6 ethernet cable U/UTP LSOH CPR Euroclass Dca manufactured and tested to the TIA/EIA 568-B.2-1, EN50173-1 and ISO/ IEC 11801 Cat 6 specifications, 500m Reel. Each cable consists of 8 colour coded solid copper conductors twisted together to form four pairs.

These are then formed around a central X-shaped polyethylene centre with the whole cable produced in a LSOH sheath.

Product Specifications

| Feature                       | Values                          |
|-------------------------------|---------------------------------|
| Conductor surface             | Bare                            |
| AWG size                      | 24                              |
| Conductor category            | Class 1 = solid                 |
| Total number of cores         | 16                              |
| Stranding element             | Pairs                           |
| Specification core insulation | Polyethylene (PE)               |
| Core identification           | Colour                          |
| Overall screening             | None                            |
| Conductor screening           | None                            |
| Outer sheath material         | Copolymer, thermoplastic (LSOH) |

# Excel Solid Cat6 Dual Cable U/UTP LSOH CPR Euroclass Dca 500 m Reel White

Item Code: 100-103



|   |             |
|---|-------------|
| Outer sheath colour   | White       |
| Flame retardant according to IEC 60332-1-2                    | yes         |
| Reaction-to-fire class according to EN 13501-6                | Dca         |
| Smoke development class according to EN 13501-6               | s2          |
| Euro class flaming droplets/particles according to EN 13501-6 | d2          |
| Euro class acidity according to EN 13501-6                    | a1          |
| Outer diameter approx.  | 12.02 mm    |
| Installation Temperature Range                                | 0...60 °C   |
| Operating Temperature Range                                   | -20...75 °C |
| Category  | 6           |
| NVP value   | 69 %        |

## Cable specifications

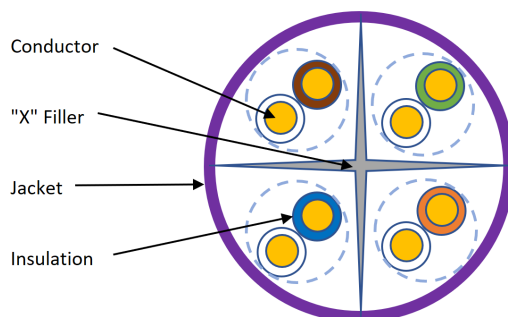
| Features                | Values       |
|-------------------------|--------------|
| Dielectric strength     | 2.5kV for 2s |
| Maximum pulling load    | 60N/6.1KgF   |
| MBR during installation | 8x cable OD  |
| MBR installed           | 4x cable OD  |

# Excel Solid Cat6 Dual Cable U/UTP LSOH CPR Euroclass Dca 500 m Reel White

Item Code: 100-103



## Cross-section diagram



## Standards

| Applicable standard           | Subject  |
|-------------------------------|--|
| ISO/IEC 11801-1:2017          | Information technology - Generic cabling for customer premises: Part 1 General Requirements  |
| IEC 61156-5:2020              | Multicore and symmetrical pair/quad cables for digital communications - Part 5: Symmetrical pair/quad cables with transmission characteristics up to 1 000 MHz - Horizontal floor wiring - Sectional specification |
| EN 50173-1:2018               | Information technology. Generic cabling systems - General requirements   |
| EN 50173-2:2018               | Information technology. Generic cabling systems - Office premises  |
| BS EN 50288-3-1:2013          | Multi-element metallic cables used in analogue and digital communication and control. Sectional specification for unshielded cables characterised up to 250 MHz  |
| EN 50399:2011+A1:2016         | Common test methods for cables under fire conditions. Heat release and smoke production measurement on cables during flame spread test. Test apparatus, procedures, results  |
| IEC 60332-1-2:2004 + A12:2020 | Tests on electric and optical fibre cables under fire conditions. Test for vertical flame propagation for a single insulated wire or cable. Procedure for 1 kW pre-mixed flame                                     |
| ANSI/TIA 568-D:2015           | Balanced Twisted-Pair Telecommunications Cabling and Components Standards  |
| IEC 60754-2:2014              | Test on gases evolved during combustion of materials from cables - Part 2: Determination of acidity (by pH   |

# Excel Solid Cat6 Dual Cable U/UTP LSOH CPR Euroclass Dca 500 m Reel White

Item Code: 100-103



measurement) and conductivity

IEC 61034-2:2005+A2:2020

Measurement of smoke density of cables burning under defined conditions – Part 2: Test procedure and requirements

EN 50575:2014 + A1:2016

Power, control and communication cables — Cables for general applications in construction works subject to reaction to fire requirements

RoHS-II/-III (2011/65/EU & 2015/863): 2023

Our products, demonstrate full adherence to the regulatory stipulations of the EU Directive 2011/65/EU (RoHS-II) and its corresponding delegated directive 2015/863 (RoHS-III).

WFD: 2023

Compliant to Waste Framework Directive

SCIP: 2023

Compliant - Does Not Contain Substances of Concern In articles as such or in complex objects (Products)

POPs (EU) No 2019/1021

EU Regulation for the restriction of Persistent Organic Pollutants.

## Part Number Table

| Part Number   | Description   |
|---------------|---|
| 100-071       | Excel Solid Cat6 Cable U/UTP LSOH CPR Euroclass Dca 305 m Box Violet      |
| 100-071-1000M | Excel Solid Cat6 Cable U/UTP LSOH CPR Euroclass Dca 1000 m Reel Violet    |
| 100-071-500M  | Excel Solid Cat6 Cable U/UTP LSOH CPR Euroclass Dca 500 m Reel Violet     |
| 100-072       | Excel Solid Cat6 Cable U/UTP LSOH CPR Euroclass Dca 305 m Box Green       |
| 100-074       | Excel Solid Cat6 Cable U/UTP LSOH CPR Euroclass Dca 305 m Box White       |
| 100-074-1000M | Excel Solid Cat6 Cable U/UTP LSOH CPR Euroclass Dca 1000 m Reel White     |
| 100-074-500M  | Excel Solid Cat6 Cable U/UTP LSOH CPR Euroclass Dca 500 m Reel White      |
| 100-075       | Excel Solid Cat6 Cable U/UTP LSOH CPR Euroclass Dca 305 m Box Orange      |
| 100-103       | Excel Solid Cat6 Dual Cable U/UTP LSOH CPR Euroclass Dca 500 m Reel White |

Excel is a world class premium performing end to end infrastructure solution designed, Manufactured, supported and delivered without compromise.

Contact us at [sales@excel-networking.com](mailto:sales@excel-networking.com)



E&OE. Excel is a registered trade name of Mayflex Holdings Ltd.