



Brochure panorama

Q-Duct

Wire duct product cross-reference guide

Power and productivity
for a better world™



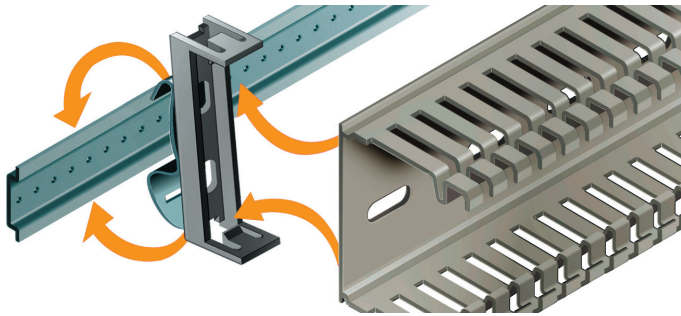
Application advantages

Wire duct: the more comprehensive the offer,
the more efficient the installation.

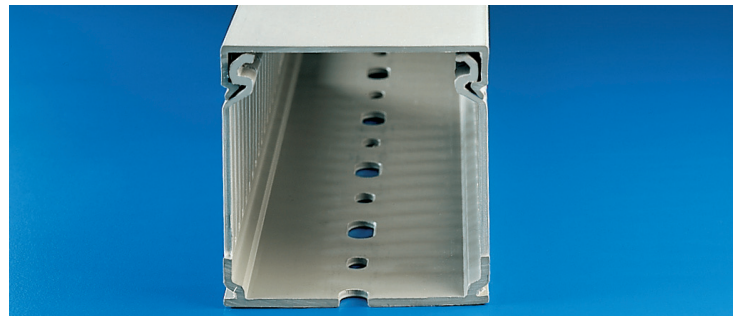
ABB's offering of Q-Duct wire duct and accessories are simple to integrate into your application. The full range of sizes is easily cross-referenced to competitors using the competitor cross-reference, and is cost competitive.

The base of each rib comes equipped with a score line that enables a clean break to create openings for running wires. Wire duct bases are available in six nominal widths 1/2" to 6" and six nominal heights 5/8" to 4". ABB wire duct is UL listed and can

be used in applications with rated voltages up to 1000 VAC and 1500 VDC. Covers are easy to install and remove due to their top profile. The rounded shape of the ribs prevents abrasions to both the installer's hands and wires. Sample kits are available of ABB's entire wire management offering.



Fix-O-Rapid accessory.



Tight sealing covers.



Technical details

- Color RAL 7030 grey
- Plastic, insulating, shock-proof, self-extinguishing material in compliance with UL 94 V0
- Standard and resistant to abnormal heat and fire up to 960 °C (glow wire test) in compliance with IEC 695-2-1 Standard
- Minimum storage/transport temperature -5 °C
- Minimum installation and usage temperature -15 °C
- Maximum usage temperature +60 °C
- Resistant to acids, oils and greases
- Rounded inner edges
- Rib profile simplifies the removal of the cover
- Designed to snap onto the Fix-O-Rapid mounting accessory, suitable to be used in DIN rail applications
- The ribs are cut using a special pressing process (rounding of the edges) producing wire ducts completely free of burrs and rough edges
- The dimensions and resilience of the ribs ensure repeated splaying during cabling
- Controlled splaying of sides ensures an excellent seal of the cover
- Cover can be opened without the use of a special tool
- Can be mounted on horizontal or vertical surfaces
- Standard 2-meter length
- Industrial application



IMQ mark in compliance
with EN 50085-2-3 Standard



Approved by Underwriters
Laboratories



RINA Approved
Declaration N°5/16391



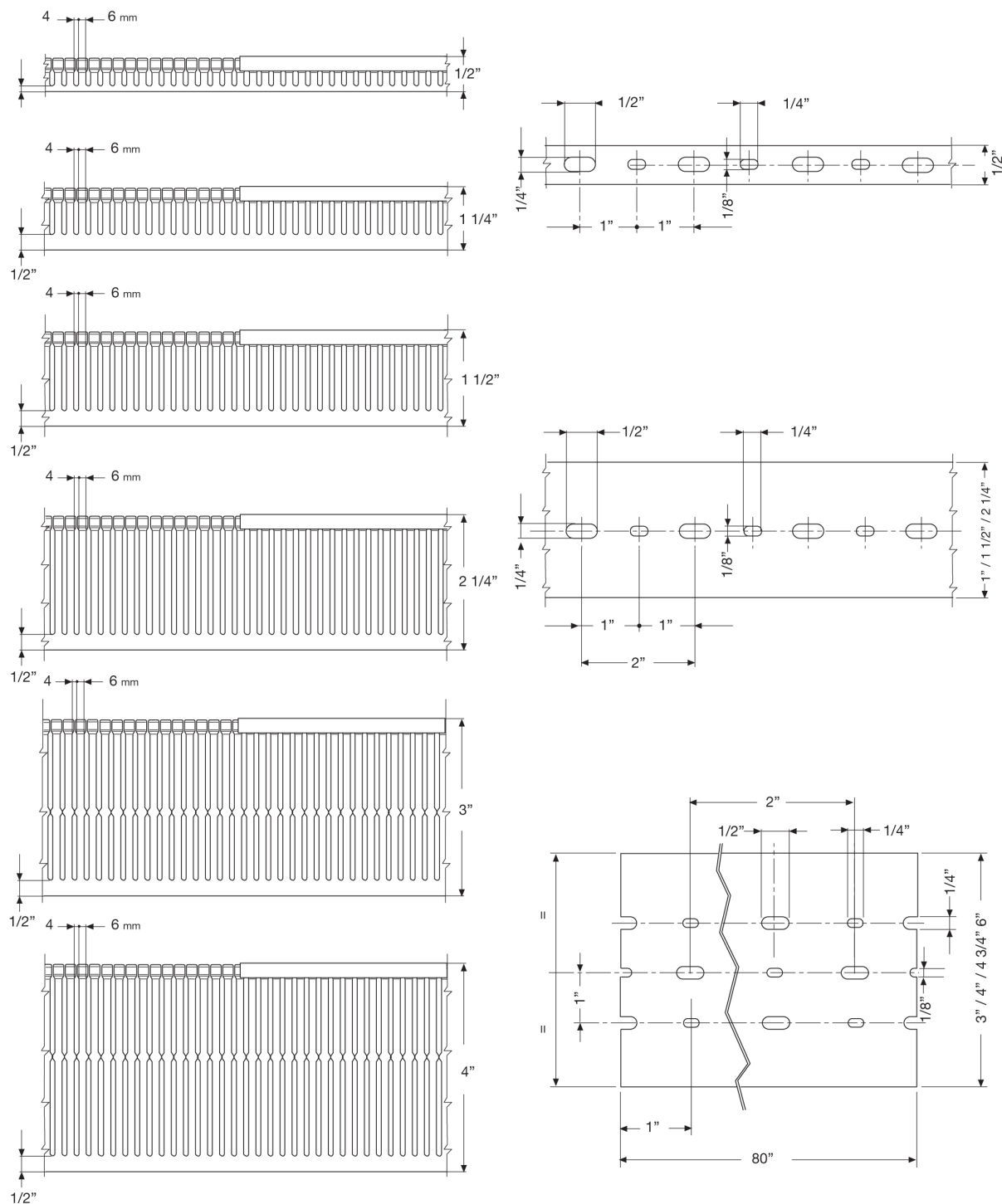
Approved by Canadian
Standards Association



NF mark in compliance with
EN 50085-2-3 Standard

Approximate dimensions - high density wire duct
Thermoplastic wire duct

Thermoplastic wire duct has obtained IMQ certification.



Q-Duct

Wire duct product cross-reference guide

Standard density: 8-12 mm slot

Size	ABB		Length/Piece		Pieces/Package			ABB list price	ABB list price (per package)
(W x H)	Gray	White	Feet	Meters	(Minimum order quantity)	Feet per package	Meters per package	(per piece)	Minimum order amount
1/2" x 1/2"	QD050X050SG	QD050X050SW	6.6	2	23	152	46	\$ 19.00	\$ 437.00
1" x 1 1/4"	QD100X125SG	QD100X125SW	6.6	2	29	191	58	24.50	710.50
1 1/2" x 1 1/4"	QD150X125SG	QD150X125SW	6.6	2	20	132	40	30.75	615.00
2 1/4" x 1 1/4"	QD225X125SG	QD225X125SW	6.6	2	26	172	52	30.75	799.50
1" x 1 1/2"	QD100X150SG	QD100X150SW	6.6	2	24	158	48	29.75	714.00
1 1/2" x 1 1/2"	QD150X150SG	QD150X150SW	6.6	2	15	99	30	32.75	491.25
2 1/4" x 1 1/2"	QD225X150SG	QD225X150SW	6.6	2	20	132	40	36.00	720.00
3" x 1 1/2"	QD300X150SG	QD300X150SW	6.6	2	16	106	32	46.75	748.00
4" x 1 1/2"	QD400X150SG	QD400X150SW	6.6	2	12	79	24	48.75	585.00
4 3/4" x 1 1/2"	QD475X150SG	QD475X150SW	6.6	2	10	66	20	48.75	487.50
1" x 2 1/4"	QD100X225SG	QD100X225SW	6.6	2	17	112	34	31.75	539.75
1 1/2" x 2 1/4"	QD150X225SG	QD150X225SW	6.6	2	11	73	22	32.75	360.25
2 1/4" x 2 1/4"	QD225X225SG	QD225X225SW	6.6	2	16	106	32	36.00	576.00
3" x 2 1/4"	QD300X225SG	QD300X225SW	6.6	2	12	79	24	47.75	573.00
4" x 2 1/4"	QD400X225SG	QD400X225SW	6.6	2	10	66	20	53.00	530.00
4 3/4" x 2 1/4"	QD475X225SG	QD475X225SW	6.6	2	7	46	14	53.00	371.00
1" x 3"	QD100X300SG	QD100X300SW	6.6	2	14	92	28	39.25	549.50
1 1/2" x 3"	QD150X300SG	QD150X300SW	6.6	2	18	119	36	43.50	783.00
2 1/4" x 3"	QD225X300SG	QD225X300SW	6.6	2	12	79	24	46.50	558.00
3" x 3"	QD300X300SG	QD300X300SW	6.6	2	8	53	16	56.25	450.00
4" x 3"	QD400X300SG	QD400X300SW	6.6	2	8	53	16	61.50	492.00
4 3/4" x 3"	QD475X300SG	QD475X300SW	6.6	2	6	40	12	64.75	388.50
1" x 4"	QD100X400SG	QD100X400SW	6.6	2	10	66	20	46.64	466.40
1 1/2" x 4"	QD150X400SG	QD150X400SW	6.6	2	14	92	28	49.82	697.48
2 1/4" x 4"	QD225X400SG	QD225X400SW	6.6	2	10	66	20	53.00	530.00
3" x 4"	QD300X400SG	QD300X400SW	6.6	2	7	46	14	64.66	452.62
4" x 4"	QD400X400SG	QD400X400SW	6.6	2	4	26	8	74.20	296.80
6" x 4"	QD600X400SG	QD600X400SW	6.6	2	4	26	8	116.50	466.00

High density: 4-6 mm slot

Size	ABB catalog number		Length/Piece		Pieces/Package	Feet per package	Meters per package	ABB list price (per piece)	ABB list price (per package)
(W x H)	Gray	White	Feet	Meters	(Minimum order quantity)				Minimum order amount
1/2" x 1/2"	QD050X050HG	QD050X050HW	6.6	2	23	152	46	\$ 19.00	\$ 437.00
1" x 1 1/4"	QD100X125HG	QD100X125HW	6.6	2	29	191	58	24.50	710.50
1 1/2" x 1 1/4"	QD150X125HG	QD150X125HW	6.6	2	20	132	40	30.75	615.00
2 1/4" x 1 1/4"	QD225X125HG	QD225X125HW	6.6	2	26	172	52	30.75	799.50
1" x 1 1/2"	QD100X150HG	QD100X150HW	6.6	2	24	158	48	29.75	714.00
1 1/2" x 1 1/2"	QD150X150HG	QD150X150HW	6.6	2	15	99	30	32.75	491.25
2 1/4" x 1 1/2"	QD225X150HG	QD225X150HW	6.6	2	20	132	40	36.00	720.00
3" x 1 1/2"	QD300X150HG	QD300X150HW	6.6	2	16	106	32	46.75	748.00
4" x 1 1/2"	QD400X150HG	QD400X150HW	6.6	2	12	79	24	48.75	585.00
4 3/4" x 1 1/2"	QD475X150HG	QD475X150HW	6.6	2	10	66	20	48.75	487.50
1" x 2 1/4"	QD100X225HG	QD100X200HW	6.6	2	17	112	34	31.75	539.75
1 1/2" x 2 1/4"	QD150X225HG	QD150X225HW	6.6	2	11	73	22	32.75	360.25
2 1/4" x 2 1/4"	QD225X225HG	QD225X225HW	6.6	2	16	106	32	37.00	592.00
3" x 2 1/4"	QD300X225HG	QD300X225HW	6.6	2	12	79	24	47.75	573.00
4" x 2 1/4"	QD400X225HG	QD400X225HW	6.6	2	10	66	20	53.00	530.00
4 3/4" x 2 1/4"	QD475X225HG	QD475X225HW	6.6	2	7	46	14	53.00	371.00
1" x 3"	QD100X300HG	QD100X300HW	6.6	2	14	92	28	39.25	549.50
1 1/2" x 3"	QD150X300HG	QD150X300HW	6.6	2	18	119	36	43.50	783.00
2 1/4" x 3"	QD225X300HG	QD225X300HW	6.6	2	12	79	24	46.50	558.00
3" x 3"	QD300X300HG	QD300X300HW	6.6	2	8	53	16	56.25	450.00
4" x 3"	QD400X300HG	QD400X300HW	6.6	2	8	53	16	61.50	492.00
4 3/4" x 3"	QD475X300HG	QD475X300HW	6.6	2	6	40	12	64.75	388.50
1" x 4"	QD100X400HG	QD100X400HW	6.6	2	10	66	20	46.64	466.40
1 1/2" x 4"	QD150X400HG	QD150X400HW	6.6	2	14	92	28	50.88	712.32
2 1/4" x 4"	QD225X400HG	QD225X400HW	6.6	2	10	66	20	53.00	530.00
3" x 4"	QD300X400HG	QD300X400HW	6.6	2	7	46	14	61.48	430.36
4" x 4"	QD400X400HG	QD400X400HW	6.6	2	4	26	8	74.20	296.80
6" x 4"	QD600X400HG	QD600X400HW	6.6	2	4	26	8	116.50	466.00

Panduit Part number (cover not included) ①②		Feet per carton	Iboco Part number (cover included) ①②		Feet per carton
Gray	White		Gray	White	
G.5X.5LG6	G.5X.5WH6	120	T1-0506G	T1-0506W	120
G1X1LG6	G1X1WH6	120	T1-1010G	T1-1010W	108
G1.5X1LG6	G1.5X1WH6	120	–	–	
G2X1LG6	G2X1WH6	120	–	–	
G1X1.5LG6	G1X1.5WH6	120	T1-1015	T1-1015W	108
G2X1.5LG6	G2X1.5WH6	120	T1-1515G	T1-1515W	120
G2X1.5LG6	G2X1.5WH6	120	T1-2215G	T1-2215W	72
–	–		T1-3015G	T1-3015W	72
G4X1.5LG6	G4X1.5WH6	120	T1-4015G	T1-4015W	48
–	–		–	–	
G1X2LG6	G1X2WH6	120	T1-1022G	T1-1022W	144
G1.5X2LG6	G1.5X2WH6	120	T1-1522G	T1-1522W	108
G2X2LG6	G2X2WH6	120	T1-2222G	T1-2222W	72
G3X2LG6	G3X2WH6	120	T1-3022G	T1-3022W	72
G4X2LG6	G4X2WH6	60	T1-4022G	T1-4022W	48
–	–		–	–	
G1X3LG6	G1X3WH6	120	T1-1030G	T1-1030W	144
G1.5X3LG6	G1.5X3WH6	120	T1-1530G	T1-1530W	96
G2X3LG6	G2X3WH6	60	T1-2230G	T1-2230W	72
G3X3LG6	G3X3WH6	60	T1-3030G	T1-3030W	72
G4X3LG6	G4X3WH6	60	T1-4030G	T1-4030W	48
–	–		–	–	
G1X4LG6	G1X4WH6	60	T1-1040G	T1-1040W	48
G1.5X4LG6	G1.5X4WH6	60	T1-1540G	T1-1540W	48
G2X4LG6	G2X4WH6	60	T1-2240G	T1-2240W	24
G3X4LG6	G3X4WH6	60	T1-3040G	T1-3040W	24
G4X4LG6	G4X4WH6	60	T1-4040G	T1-4040W	24
G6X4LG6	G6X4WH6	60	T1-6040G	T1-6040W	24

Panduit Part number (cover not included) ①②		Feet per carton	Iboco Part number (cover included) ①②		Feet per carton
Gray	White		Gray	White	
–	–		–	–	
F1X1LG1	F1X1WH1	120	–	–	
F1.5X1LG6	F1.5X1WH6	120	–	–	
F2X1LG6	F2X1WH6	120	–	–	
F1X1.5LG6	F1X1.5WH6	120	T1E-1015G	T1E-1015W	108
F1.5X1.5LG6	F1.5X1.5WH6	120	T1E-1515G	T1E-1515W	120
F2X1.5LG6	F2X1.5WH6	120	T1E-2215G	T1E-2215W	72
–	–		T1E-3015G	T1E-3015W	72
–	–		T1E-4015G	T1E-4015W	48
–	–		–	–	
F1X2LG6	F1X2WH6	120	T1E-1022G	T1E-1022W	144
F1.5X2LG6	F1.5X2WH6	120	T1E-1522G	T1E-1522W	108
F2X2LG6	F2X2WH6	120	T1E-2222G	T1E-2222W	72
F3X2LG6	F3X2WH6	120	T1E-3022G	T1E-3022W	72
F4X2LG6	F4X2WH6	60	T1E-4022G	T1E-4022W	48
–	–		–	–	
F1X3LG6	F1X3WH6	120	T1E-1030G	T1E-1030W	144
F1.5X3LG6	F1.5X3WH6	120	T1E-1530G	T1E-1530W	96
F2X3LG6	F2X3WH6	60	T1E-2230G	T1E-2230W	72
F3X3LG6	F3X3WH6	60	T1E-3030G	T1E-3030W	72
F4X3LG6	F4X3WH6	60	T1E-4030G	T1E-4030W	48
–	–		–	–	
F1X4LG6	F1X4WH6	60	–	–	
F1.5X4LG6	F1.5X4WH6	60	–	–	
F2X4LG6	F2X4WH6	60	–	–	
F3X4LG6	F3X4WH6	60	–	–	
F4X4LG6	F4X4WH6	60	T1E-4040G	T1E-4040W	24
–	–		–	–	

Wire duct sample kits

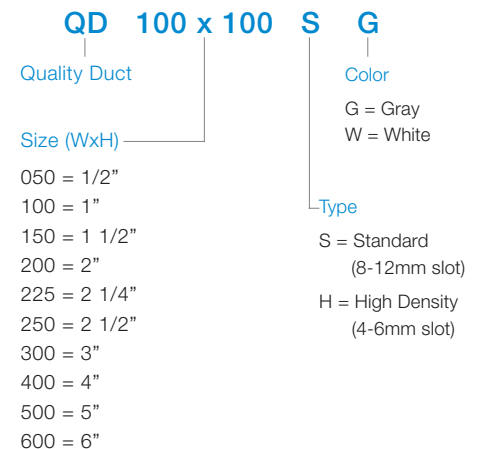
Catalog number	Description
QT-SAMPL-STDIES	Standard cable tie
QT-SAMPL-LGTIES	Large cable tie
QT-SAMPL-MBA	Cable tie mounting bases
QD-SAMPL-STDG	Standard wire duct (Gray)
QD-SAMPL-HIDENSG	High density wire duct (Gray)
QD-SAMPL-STDW	Standard wire duct (White)
QD-SAMPL-SQR	Square flexible wire duct
QD-SAMPL-RND	Round flexible wire duct
QD-SAMPL-SPIRAL	Spiral wrap

Wire duct sample kits and additional wire duct products are available for order through your ABB sales representative.



Locate QR Code Reader on smart device APP site

Catalog number explanation



① ABB - Wire duct covers INCLUDED in the above prices

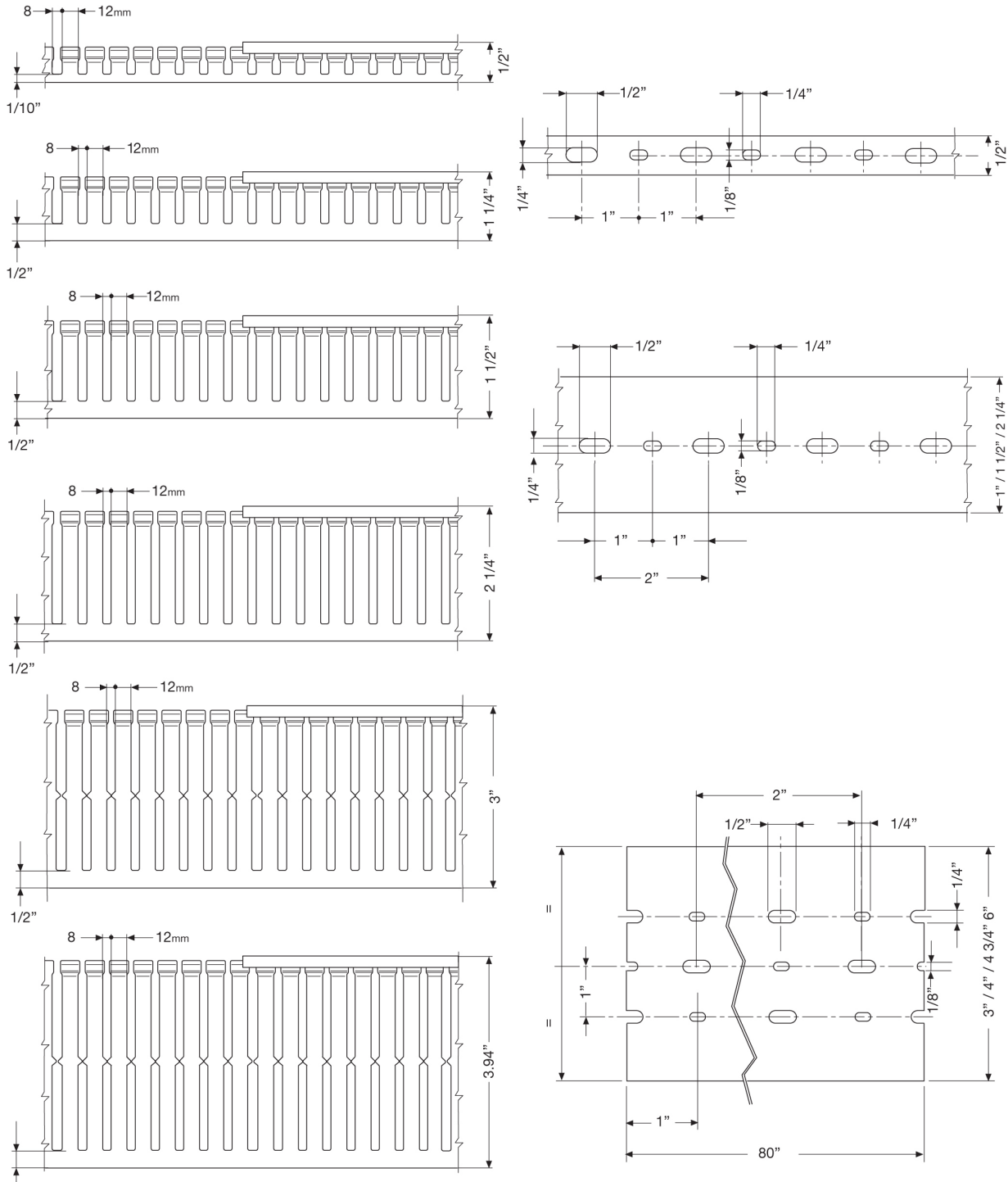
① Panduit - Wire duct covers NOT included in the above part numbers

① Iboco - Wire duct covers included in the above part numbers

② Carton quantities are based on publicly available data

Approximate dimensions - standard density wire duct
Thermoplastic wire duct

Thermoplastic wire duct has obtained IMQ certification.



Contact us

ABB Inc.

Low Voltage Control Products
16250 W. Glendale Drive
New Berlin, WI 53151
Phone: 888-385-1221
Fax: 800-726-1441

USA Technical support:

888-385-1221, Option 4
7:30AM to 5:30PM, CST,
Monday - Friday
lvps.support@us.abb.com

USA Customer service:

888-385-1221, Option 4
7:30AM to 5:30PM, CST,
Monday - Friday
lvpwest@us.abb.com
lvpmidwest@us.abb.com
lvpsouth@us.abb.com
lvpsoutheast@us.abb.com
lvpgreatlakes@us.abb.com
lvpnortheast@us.abb.com

Web: www.abb.us/lowvoltage

Note:

We reserve the right to make technical changes or modify the contents of this document without prior notice. With regard to purchase orders, the agreed particulars shall prevail. ABB does not accept any responsibility whatsoever for potential errors or possible lack of information in this document. We reserve all rights in this document and in the subject matter and illustrations contained therein. Any reproduction, disclosure to third parties or utilization of its contents – in whole or in parts – is forbidden without prior written consent of ABB.

© Copyright 2012 ABB Inc. All rights reserved.