

# OptiLine 70 Posts

Product Overview Catalogue

**CLIPSAL**<sup>®</sup>

by **Schneider** Electric

## Complete flexibility



# OptiLine 70 Posts

## Overview

---

Established in 1920, Clipsal by Schneider Electric is Australia's number one brand of electrical products, accessories and solutions for the residential, commercial, industrial, data, home control and energy management markets. Clipsal has evolved and grown from its Adelaide base with great success by supporting the local economy and providing products manufactured at multiple sites across Australia.

Clipsal is an electrical industry leader, dedicated to supplying you with the most innovative and sustainable solutions available. As part of Schneider Electric, the global specialist in energy management, Clipsal provides a total electrical solution for any project or application.

## OptiLine 70

When something is said to be flexible, it can easily be modified to respond to a change in circumstances. The OptiLine 70 universal installation system is a truly flexible electrical solution. This completely versatile system can deliver reliable access to power, data and telephone — quickly. Not only is this system easy to install or upgrade, it also has the flexibility to suit any office floor plan.

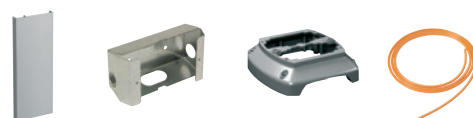
The range of products includes OptiLine 70 Trunking, Poles and Posts. These products can provide integrated power, data and telephone delivery solutions for ceilings, walls and desks, and are designed to fulfill the most stringent demands for function, design, convenience and safety.

# Contents

- Page 4  
Product Information and Features



- Page 8  
Posts and Accessories

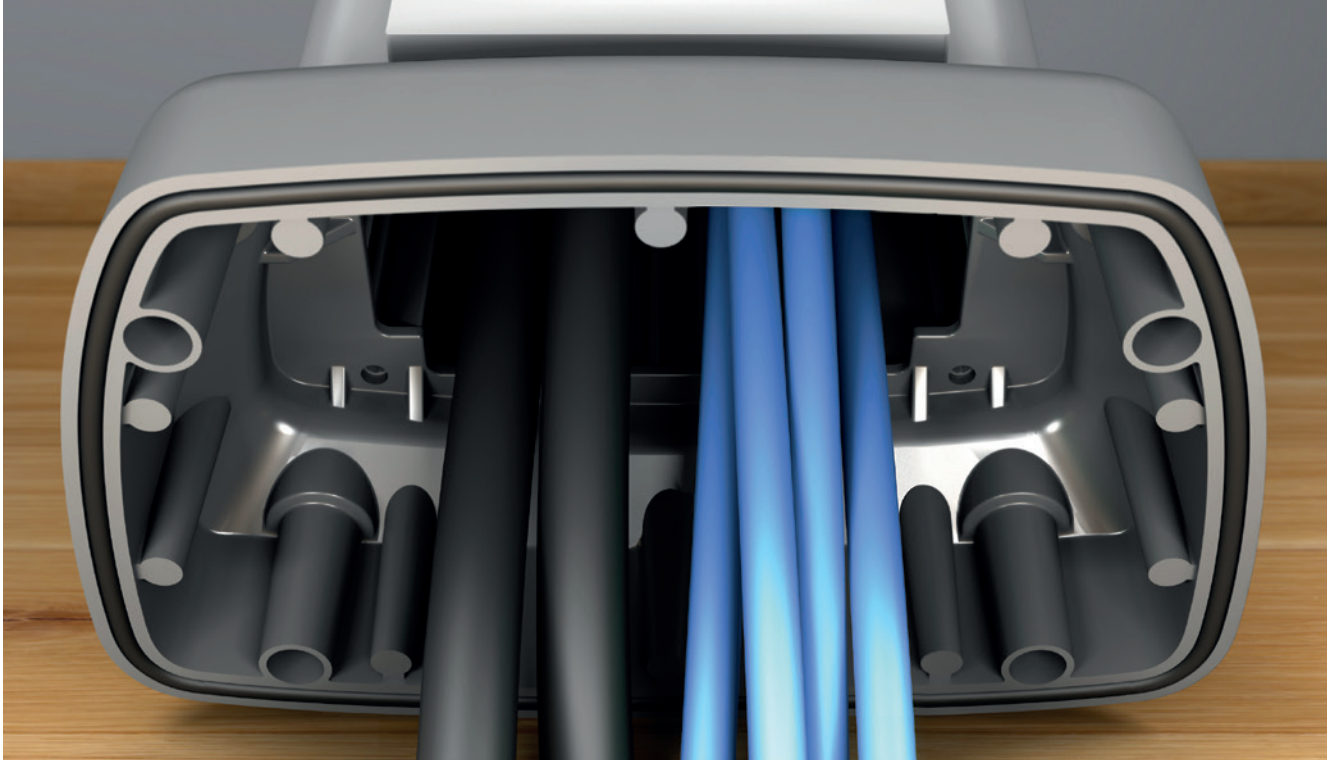


- Page 14  
Technical and Material Information

# OptiLine 70 Posts

## Product Information and Features

---



### Complete Flexibility

For tidy and convenient cable management look no further than OptiLine 70 Posts. Manufactured from durable anodised aluminium, with an attractive rounded design, OptiLine 70 Posts are the ideal modular solution for all your power, data and telephone on all types of floors, particularly in conference rooms and throughout commercial buildings.

The 70mm front opening makes these posts suitable for Clipsal 2000 Series™, C2000 Series™ and Saturn™ Outlets. These Clipsal accessories can then be fitted with shroud kits for power and data requirements.

The compact and rounded-edge design of OptiLine 70 Posts softens their appearance. The posts are available in one and two-sided versions, and are made of natural anodised aluminium – to give them a high quality finish. When used with raised and cavity floors, the posts are fed from underneath using a OptiLine Floor Feeder accessory. On concrete floors, the feeding comes from a screeded floor.

The attractive and high quality design provides a reliable structure for easy installation and superior performance. Each OptiLine 70 Post is made from aluminium components – many of which are die-cast – providing additional strength to each unit.

## Product Features

### Design, finish and quality

- Aluminium construction
- Stable and sturdy design
- Reliable function
- High-quality finish

### Power/Data Shroud

- Provides a neat and secure installation
- Quick and easy to mount
- Provides flexible positioning of outlets
- The 70mm front opening makes these posts suitable for Clipsal 2000 Series, C2000 Series and Saturn Outlets





# OptiLine 70 Posts

## Product Information and Features

---

### Product Features

#### Post feeding (1)

- Floor fixing for post feed from beneath the floor (standard offering)
- Floor fixing for post feed with slot along floor

#### Screw slots (2)

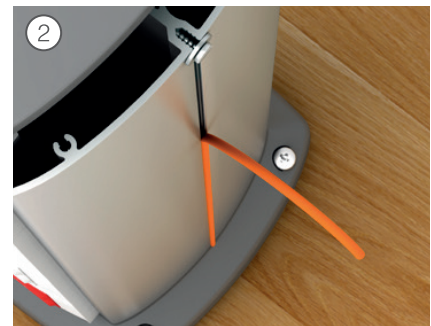
- Slots on both sides of each pole
- Decorative colour stripes to complement any office interior (optional)
- Provision for mounting additional products like spotlights, small shelves, etc.

#### Mounting solutions (3)

- Mounted using OptiLine 70 Power/Data Shrouds
- Support a neat and secure fitting
- Suit Clipsal 2000, C2000 Series and Saturn Outlets
- Can mix and match power/data/telephone outlets to suit your requirements

#### Cable inlets (4)

- OptiLine 70 Power/Data Shrouds have several cable inlets (at ends and on sides)
- Two OptiLine 70 Power/Data Shrouds can be fixed one above the other (so data and power can enter from separate side channels)
- Simple fit-off
- Secure fixings
- Cables can pass through, or use side entry



#### Floor fixing (5)

- Die-cast aluminium floor fixing with smooth edges
- Covers sharp cut of the base profile
- No risk of damage to cables

#### Wet sealing (6)

- Floor fixing with gasket ring included
- Effective wet sealing
- Stable mounting on slightly uneven floors

#### Earthing (7)

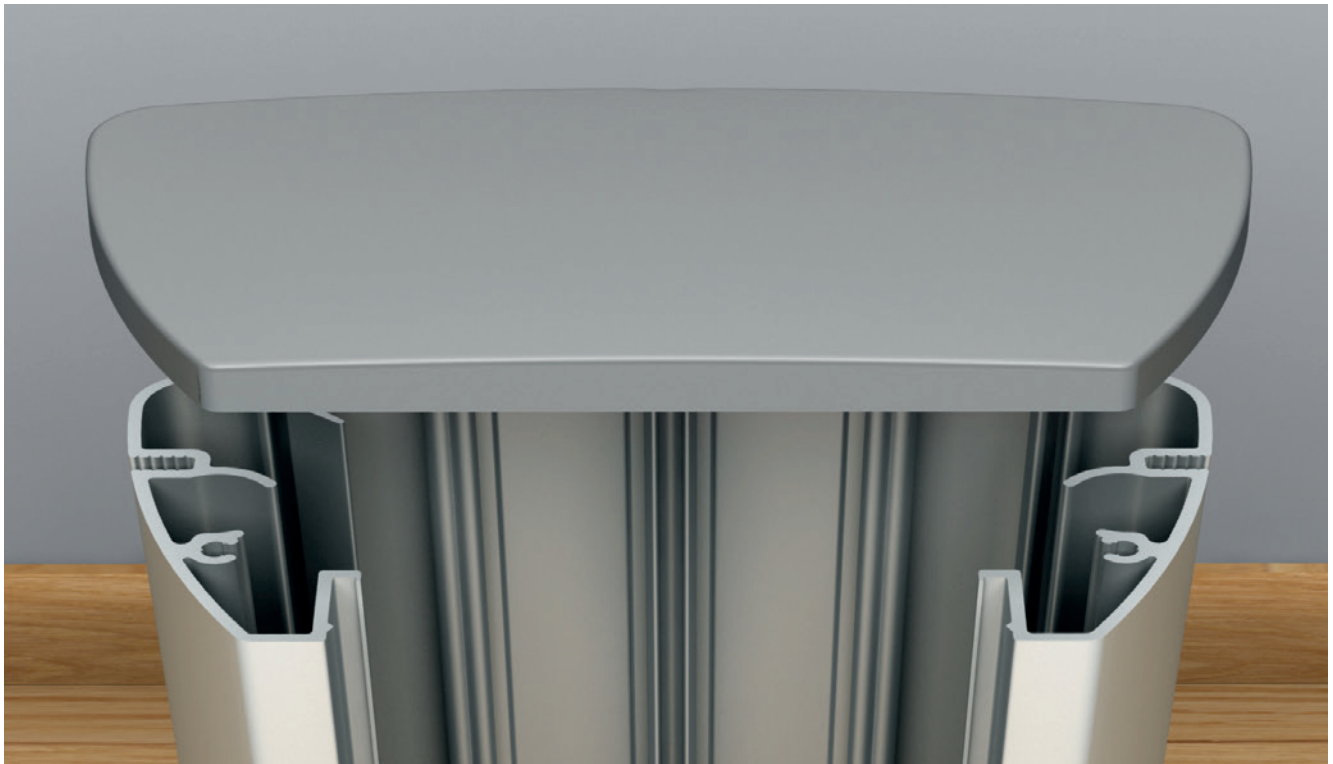
- Accessible Earthing rails (in base profile and front cover)
- Assembled Earthing kit (included)
- Quick and easy to mount
- Screwless mounting



# OptiLine 70 Posts

## Posts and Accessories

---



### For Tidy and Convenient Cable Management

These versatile OptiLine 70 Posts come with a range of different accessories, including: floor fixing and feeders, Earthing devices and power/data shrouds. Any, or all of these high-quality accessories will assist in delivering convenient access to power, data and telephone on all types of floors.



## OptiLine 70 One-Sided Posts

Empty, one-sided service post mounted on a floor fixing. Includes: stop end, Earthing kit lid, mounting instructions and gasket ring (for floor fixing). The 70mm front opening allows wiring devices to be placed along the entire post length, using shrouds for Clipsal 2000 Series, C2000 Series and Saturn Power/Data/Telephone Outlets. Not Earthed. Supplied without wiring devices and cables.

Material: Aluminium, natural anodised.

### One-sided posts

Cat. No.	Length	Width	Depth	Colour	Pack Qty
<b>ISM20600</b>	333mm	153mm	100mm	Anodised	1 Pce

### Suitable for up to two Clipsal Outlets

Cat. No.	Height	Width	Depth	Colour	Pack Qty
<b>ISM20603</b>	613mm	153mm	100mm	Anodised	1 Pce



## OptiLine 70 Two-Sided Posts

Empty, two-sided service post mounted on a floor fixing. One side provided with an aluminium front cover. Includes: stop end, Earthing kit lid, mounting instructions and gasket ring (for floor fixing). The 70mm front opening allows wiring devices to be placed along the entire post length, using shrouds OptiLine 70 power/data for Clipsal 2000 Series, C2000 Series and Saturn Power/Data/Telephone Outlets. Not Earthed. Supplied without wiring devices and cables.

Material: Aluminium, natural anodised.

### Two-Sided Posts

Cat. No.	Height	Width	Depth	Colour	Pack Qty
<b>ISM20606</b>	333mm	154mm	164mm	Anodised	1 Pce

### Suitable for up to four Clipsal Outlets

Cat. No.	Height	Width	Depth	Colour	Pack Qty
<b>ISM20609</b>	613mm	154mm	164mm	Anodised	1 Pce



# OptiLine 70 Posts

## Posts and Accessories

### OptiLine 70 Front Cover

Front cover (with Earthing slots) to be snapped into 70mm front openings. Supplied with protective foil, in lengths of 2m.

Material: Aluminium, natural anodised.

#### Front cover

Cat. No.	Height	Width	Depth	Colour	Pack Qty
<b>ISM11950</b>	2000mm	71mm	13mm	Anodised	12 Pce



**ISM11950**

### OptiLine 70 Power/Data Shroud

Mounting, Earthing and shroud kit for fixing Clipsal 2000 Series, C2000 Series and Saturn Power/Data/Telephone Outlets to the posts. These kits are screwed into rails in the post; the outlet is then screwed onto the front, clamping the outlet and shroud in place. Includes: shroud, Earth wire and mounting screws.

#### Data shroud

Cat. No.	Height	Width	Depth	Colour	Pack Qty
<b>MDE0LSPTD</b>	115mm	63mm	47mm	Galvanised	1 Pce



**MDE0LSPTD**

### OptiLine 70 Partition Profile

Partition profile of halogen-free material with two partition walls. Mounted in internal fixing rails of one and two-sided posts, for the separation of power and low voltage cables. Can be cut to the desired length.

Material: ABS.

#### Partition profile

Cat. No.	Height	Width	Depth	Colour	Pack Qty
<b>ISM20555</b>	500mm	49mm	50mm	White	10 Pce



**ISM20555**

## OptiLine Earthing Clamp

Earthing clamp to be used for bonding of front cover, base profile and accessories to Earth.

Material: Steel.

### Earthing clamp

Cat. No.	Height	Width	Depth	Colour	Pack Qty
<b>ISM10952</b>	9mm	9mm	9mm	—	20 Pce



ISM10952

## OptiLine Earthing Kit

Kit includes: Earth wire with flat pin connectors and Earthing clamps. Used to connect the front cover to the base profile.

### Earthing kit

Cat. No.	Length	Colour	Pack Qty
<b>ISM10953</b>	200mm	Yellow/green	10 Pce
<b>ISM10954</b>	300mm	Yellow/green	10 Pce



ISM10953

## OptiLine Decorative stripe

Decorative stripe to be fitted in the slots along the sides of one and two-sided posts. Supplied in lengths of 5m.

Material: Silicone rubber.

### Decorative stripe

Cat. No.	Length	Diameter	Colour	Pack Qty
<b>ISM20822</b>	5000mm	Ø3.5mm	Grey	1 Pce
<b>ISM20823</b>	5000mm	Ø3.5mm	White RAL 9010	1 Pce
<b>ISM20824</b>	5000mm	Ø3.5mm	Orange	1 Pce



ISM20822



ISM20823



ISM20824

# OptiLine 70 Posts

## Posts and Accessories

### OptiLine 70 Floor Fixing with Slot for Floor Feeder

Floor fixing for one or two-sided post. Fixed to the floor by screws, with slot for connection of floor feeder 18mm x 75mm or 18mm x 91mm, and gasket ring (included).

Material: Aluminium, powder coated.

#### Floor fixing with slot for floor feeder

Cat. No.	Height	Width	Depth	Colour	Pack Qty
ISM20650	45mm	153mm	100mm	Grey RAL 9007	1 Pce
ISM20651	45mm	154mm	164mm	Grey RAL 9007	1 Pce
ISM20652	45mm	153mm	100mm	Grey RAL 9007	1 Pce
ISM20653	45mm	154mm	164mm	Grey RAL 9007	1 Pce

Description	
ISM20650	For one-sided pole and 18mm x 91mm aluminium floor feeder
ISM20651	For two-sided pole and 18mm x 91mm aluminium floor feeder
ISM20652	For one-sided pole and 18mm x 75mm PVC/aluminium floor feeder
ISM20653	For two-sided pole and 18mm x 75mm PVC/aluminium floor feeder



ISM20650



ISM20651



ISM20652



ISM20653

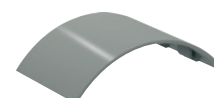
### OptiLine Floor Feeder Jointing Piece

Floor feeder jointing piece to cover joints between floor feeder sections.

Material: PVC.

#### Floor feeder jointing piece

Cat. No.	Height	Width	Depth	Colour	Pack Qty
ISM20818	20mm	50mm	78mm	Grey RAL 7030	10 Pce



ISM20818

### OptiLine Corner Feeder Piece

Corner feeder piece to be used in 90° corners between floor feeder sections.

Material: PVC

#### Corner feeder piece

Cat. No.	Height	Width	Depth	Colour	Pack Qty
ISM20819	20mm	120mm	120mm	Grey RAL 7030	10 Pce



ISM20819

## OptiLine Aluminium Floor Feeder

Floor feeder made up by a three-compartment base profile and cover, supplied in lengths of 2.5m. The base profile has punched holes to simplify mounting, and screw slots for Earth connection. Can be used as a separate item or in combination with a service post provided with slotted floor fixing for aluminium floor feeder. Meets load requirements according to VDE 0634 (750N/50mm<sup>2</sup>).

Material: Aluminium, natural anodised.

### Aluminium floor feeder (2.5m)

Cat. No.	Height	Width	Depth	Colour	Pack Qty
<b>ISM20660</b>	18mm	91mm	2500mm	Anodised	1 Pce

Floor feeder made up by a three-compartment base profile and cover, supplied in lengths of 2m. To be used for feeding along the floor to a service post provided with a slotted floor fixing for 18mm x 75mm floor feeder.

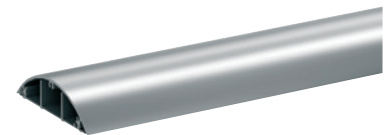
Material: Aluminium, natural anodised

### Aluminium floor feeder (2m)

Cat. No.	Height	Width	Depth	Colour	Pack Qty
<b>ISM20857</b>	18mm	75mm	2000mm	Anodised	4 Pce



ISM20660



ISM20857

## OptiLine PVC Floor Feeder

Floor feeder made up by a three-compartment base profile and cover, supplied in lengths of 2m. To be used for feeding along the floor to a service post provided with a slotted floor fixing for 18mm x 75mm floor feeder.

Material: PVC.

### PVC floor feeder

Cat. No.	Height	Width	Depth	Colour	Pack Qty
<b>ISM20817</b>	18mm	75mm	2000mm	Grey RAL 7030	14 Pce

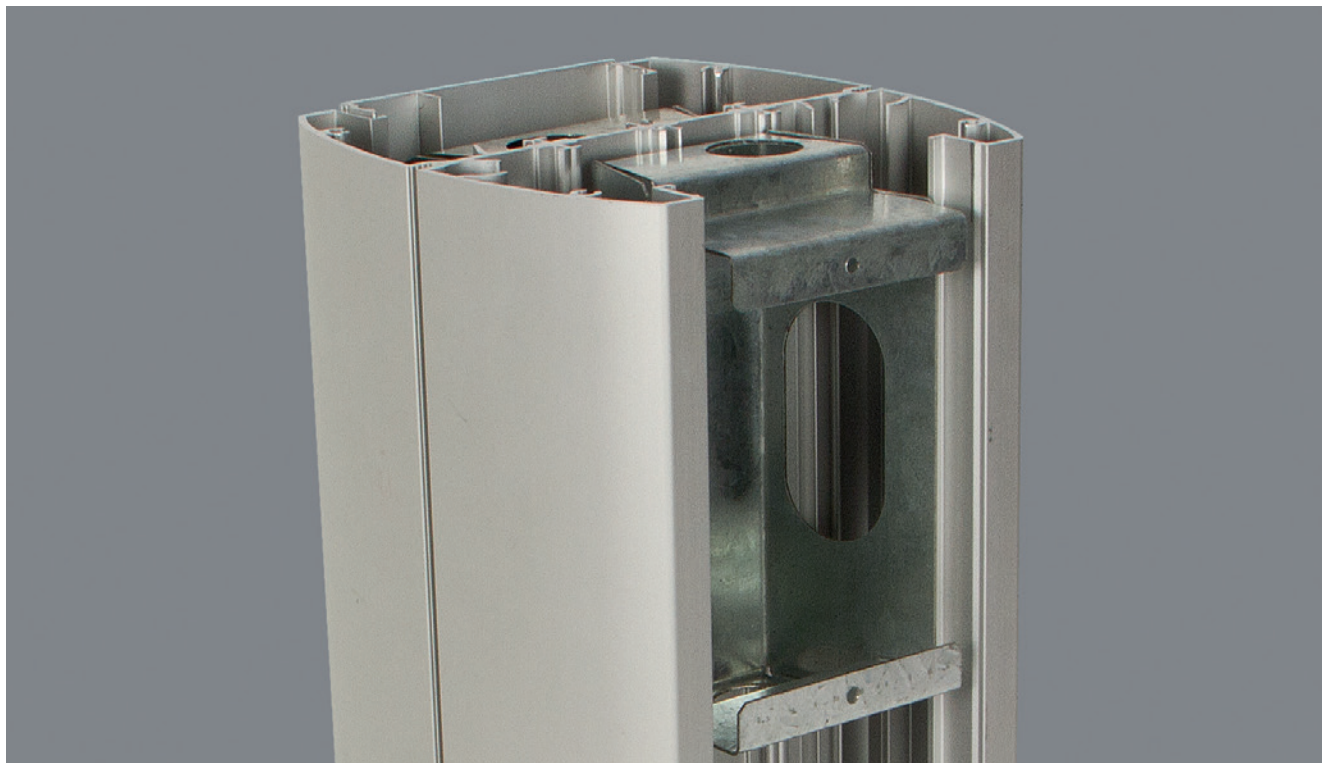


ISM20817

# OptiLine 70 Posts

## Technical and Material Information

---



### A Closer Look at OptiLine 70 Posts

When you break them down, you can see that no stone has been left unturned while designing OptiLine 70 Posts. Every little detail has been considered to make these versatile power, data and telephone delivery posts, suitable for any office floor plan.

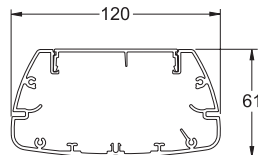


## OptiLine 70 Posts Dimensions (mm)

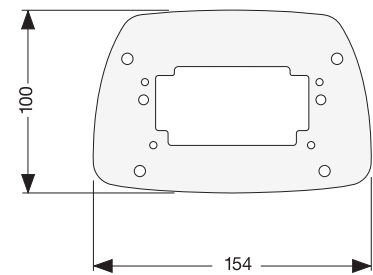
One-sided posts



Posts



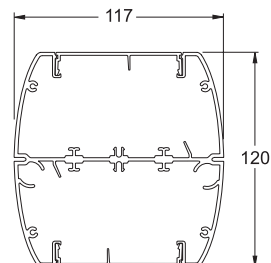
Floor fixings



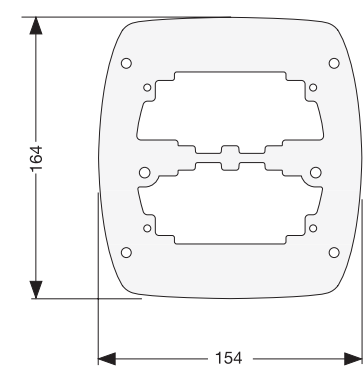
Two-sided posts



Posts



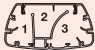
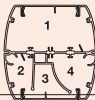
Floor fixings



# OptiLine 70 Posts

## Technical and Material Information

### OptiLine 70 Posts Cable Capacity

Compartment	Max. Ø mm	Cross section area mm <sup>2</sup>	Cable capacity* mm <sup>2</sup>			
			40%	50%	60%	
One-sided post						
1	21	1418	567	709	851	
2	26	905	362	452	543	
3	36	2207	883	1103	1324	
Two-sided post						
1	42	4980	1992	2490	2988	
2	23	1471	588	735	883	
3	26	900	360	450	540	
4	38	2253	901	1126	1352	
*We recommend a 40% utilisation of the cable capacity.						



**Note:**

These are recommended cable quantities only. Cable installer should ensure compliance with Australian/New Zealand Standards for Wiring Rules (AS/NZS 3000:2007). Maximum data cable quantities should be based on vendor recommendation.

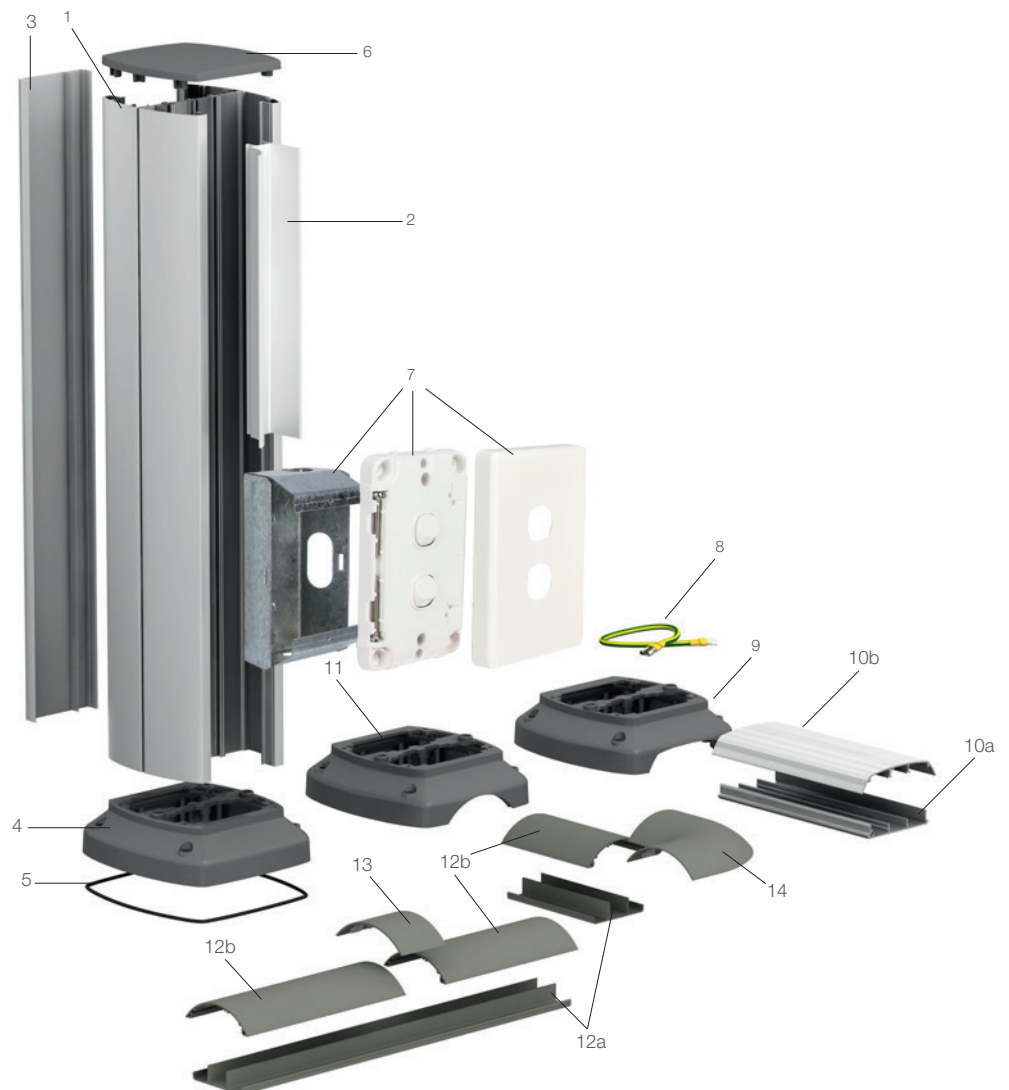
## OptiLine 70 Posts and Floor Feeding System

### Post

1. Base profile
2. Partition profile
3. Front cover
4. Floor fixing
5. Gasket ring
6. Stop end
7. Power/data shroud
8. Earthing kit

### Floor feeding system

9. Floor fixing with slot for aluminium floor feeder
10. Aluminium floor feeder
  - 10a. Base profile
  - 10b. Cover
11. Floor fixing with slot for PVC floor feeder
12. PVC Floor feeder
  - 12a. Base profile
  - 12b. Cover
13. Floor feeder jointing piece
14. Corner feeder piece



# OptiLine 70 Posts

## Technical and Material Information

### Technical and material information

Aluminium, extruded	
Specification	EN-AW-6063
Density	2.7g/cm <sup>3</sup>
Linear expansion	2.4 x 10 <sup>-5</sup> /°C
Surface treatment	Natural anodising
Aluminium, die-cast	
Density	2.7g/cm <sup>3</sup>
Linear expansion	2.4 x 10 <sup>-5</sup> /°C
Surface treatment	Powder coating
Colour	Grey RAL 9007
PC/ABS	
Density	1.14g/cm <sup>3</sup>
Linear expansion	70 x 10 <sup>-6</sup> /°C
Volume resistivity	>10 <sup>13</sup> Ω cm
Water absorption	0.6%
Fire rating	UL 94 HB
Colour	White RAL 9010 Aluminium metallic (painted) White (unspecified)
PBT with 30% glass fibre	
Density	1.52g/cm <sup>3</sup>
Linear expansion	40-70 x 10 <sup>-6</sup> /°C
Fire rating	UL 94 HB (1.5mm)
Colour	Light grey
PC+ASA	
Density	1.15g/cm <sup>3</sup>
Linear expansion	80 x 10 <sup>-6</sup> /°C
Water absorption	0.6%
Volume resistivity	>10 <sup>13</sup> Ω cm
Dielectric strength	17kV/mm
Fire rating	UL 94 HB
Colour	White RAL 9010 Aluminium metallic (painted)
PVC	
Density	1.5g/cm <sup>3</sup>
Linear expansion	60 x 10 <sup>-6</sup> /°C
Volume resistivity	>10 <sup>13</sup> Ω cm
Water absorption	<0.2%
Fire rating	UL 94 V0 (0.8mm)
Colour	Grey RAL 7030
Degree of protection	IP40
Temperature range	Operating temperature from -25°C to +60°C
Standards and certificates	<p>The products comply with the Standards:</p> <ul style="list-style-type: none"> <li>• SS 424 10 32</li> <li>• IEC 1084-2-4</li> </ul> <p>The products satisfy the provisions for CE marking according to the Low Voltage Directive 73/23/EEC and 93/68/EEC</p>

Notes

**Schneider Electric (Australia) Pty Ltd**

33-37 Port Wakefield Road, Gepps Cross,  
South Australia 5094

PO Box 132, Enfield Plaza,  
South Australia 5085

Telephone: (08) 8161 0511  
Facsimile: (08) 8161 0900  
Email: [plugin@clipsal.com.au](mailto:plugin@clipsal.com.au)  
Internet: [www.clipsal.com](http://www.clipsal.com)

**International Enquiries**  
**International Sales and Marketing**  
Email: [export@clipsal.com.au](mailto:export@clipsal.com.au)

**Schneider Electric (NZ) Ltd**

38 Business Parade South, Highbrook,  
East Tamaki, Manukau 2013,  
NEW ZEALAND

Telephone: + 64 9 829 0490  
Facsimile: + 64 9 829 0491  
Internet: [www.schneider-electric.co.nz](http://www.schneider-electric.co.nz)

**Customer Care**

Freephone: 0800 652 999  
Freefax: 0800 101 152  
Email: [sales@nz.schneider-electric.com](mailto:sales@nz.schneider-electric.com)  
Internet: [www.clipsal.co.nz](http://www.clipsal.co.nz)

You can find this brochure and many  
others online in PDF format at:  
**[clipsal.com](http://clipsal.com)**

Follow the links off the home page or  
access the following page directly:  
**[clipsal.com/brochures](http://clipsal.com/brochures)**

**[clipsal.com](http://clipsal.com)**

Schneider Electric (Australia) Pty Ltd reserves the right to  
change specifications, modify designs and discontinue  
items without incurring obligation and whilst every effort  
is made to ensure that descriptions, specifications  
and other information in this catalogue are correct, no  
warranty is given in respect thereof and the company  
shall not be liable for any error therein.

© 2013 Schneider Electric. All Rights Reserved.  
Trademarks are owned by Schneider Electric Industries  
SAS or its affiliated companies.

This document has been printed using FSC Mix Certified paper.  
ISO 14001 environmental management system in use at mill.