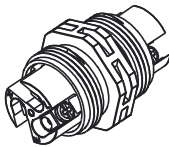


## FICX Connector

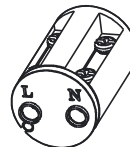


## Range Overview

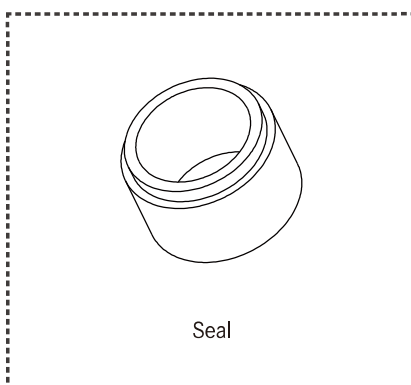
└ Terminal Type: Screw



└ Terminal Type: End barrier screw



└ Accessories



## Ordering Information

### Specification

(SC-L) Cable Joiner

### Shape

(PG11) I Tube Cable Joiner Screw type

(PG12) I Tube Cable Joiner End Barrier Screw Type

(PG13) Long Tube Cable Joiner End Barrier Screw Type

(PGT2) T Tube Cable Joiner Screw type

### Number of Contacts

(02) 2 Contacts

(03) 3 Contacts

(04) 4 Contacts

### Cable O.D. (Seal Color)

(00) Without Seal

(BL) 4.5~6.5mm

(YW) 6.6~8.5mm

(GN) 8.6~10.5mm

(RD) PG11 & PGT2: 10.6 ~ 12.5mm

PG12 & PG13: 10.6 ~ 11.5mm

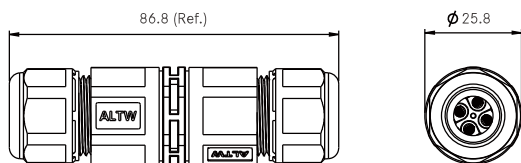
## Find Our Standard Products

### └ I Tube

SC-L-PG11- ①-②



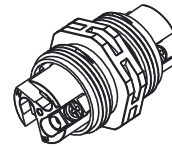
CE RoHS



Unit: mm

\*Spanner: 24mm

■ Screw type of terminal block housing



- Waterproof rating: IP68 (50m/24hrs)
- In-house UV resistance test: 720hrs
- Accommodate a wide range of wire and cable's OD
- Quick and easy Installation
- Color Identification for sealing
- Easy-grip design

#### General Specification

Number of Positions (Code ①)	2P (02) , 3P (03) , 4P (04)
Current Rating	20A for 2P, 3P & 4P
Voltage Rating	450V
Operating Temperature	-40°C ~ 105°C
Wire Section	18~14 AWG (0.75~2.5 mm <sup>2</sup> )
Cable OD (Seal Color, Code ②)	(00) Without Seal (BL) 4.5~6.5mm (YW) 6.6~8.5mm (GN) 8.6~10.5mm (RD) 10.6~12.5mm

#### Material Specification

Gland Nut	PA6+GF, Black
Gasket	Silicon, Yellow
L-Gasket	Silicon, Yellow
Seal	Silicon
Gland Pipe	PA66, Black
Terminal Block Housing	PA66+GF, Black
Contact	Brass, Nickel Plated
Screw	Stainless Steel

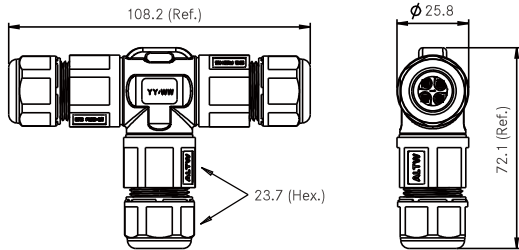
【Note】 Design and specification are subject to change without notice.

## T Tube

SC-L-PGT2-1-2



CE RoHS



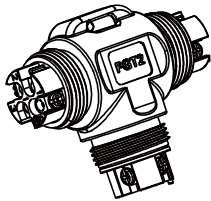
Unit: mm

\* Spanner: 24mm

### General Specification

Number of Positions (Code 1)	2P (02), 3P (03), 4P (04)
Current Rating	20A for 2P 15A for 3 & 4P
Voltage Rating	450V
Operating Temperature	-40°C~105°C
Wire Section	18~14 AWG (0.75~2.5 mm <sup>2</sup> )
Cable OD (Seal Color, Code 2)	(00) Without Seal (BL) 4.5~6.5mm (YW) 6.6~8.5mm (GN) 8.6~10.5mm (RD) 10.6~12.5mm

Screw type of terminal block housing



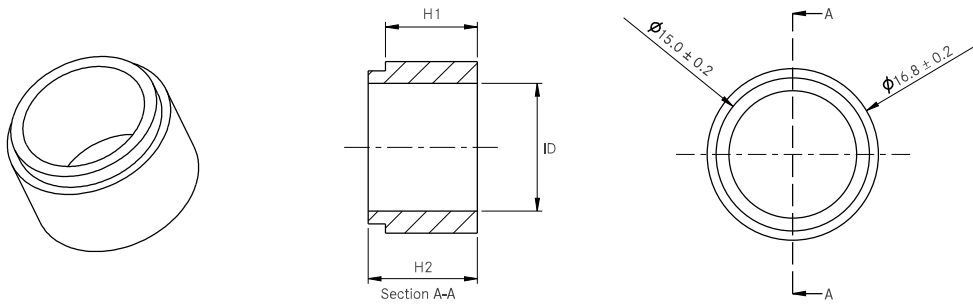
- Waterproof rating: IP68 (50m/24hrs)
- In-house UV resistance test: 720hrs
- Accommodate a wide range of wire and cable's OD
- Quick and easy Installation
- Color Identification for sealing
- Easy-grip design

### Material Specification

Gland Nut	PA6+GF, Black
Gasket	Silicone, Yellow
L-Gasket	Silicone, Yellow
Seal	Silicone
Gland Pipe	PA66, Black
Terminal Block Housing	PA66+GF, Black
Contact	Brass, Nickel Plated
Screw	Stainless Steel

## Accessories

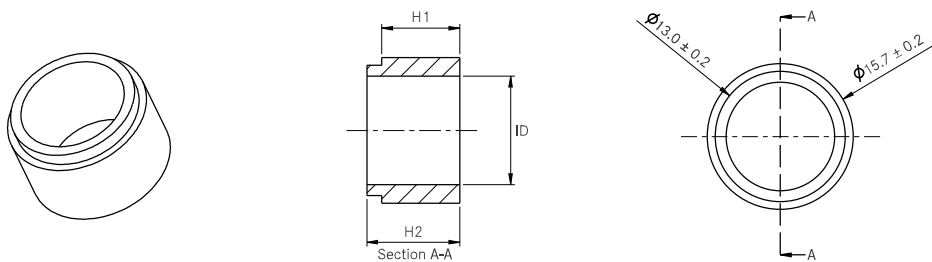
### Seal for PG11 & PGT2 SC-PG-SL-XX-001



<u>XX</u> : Seal Color	H1	H2	ID	Cable Range
Blue (BL)	9.0	10.7	6.5	Φ4.5 ~ Φ6.5
Yellow (YW)	9.0	10.7	8.5	Φ6.6 ~ Φ8.5
Green (GN)	9.0	10.7	10.5	Φ8.6 ~ Φ10.5
Red (RD)	9.0	10.7	12.5	Φ10.6 ~ Φ12.5

Unit: mm

### Seal for PG12 & PG13 SC-PG-SL-XX-002



<u>XX</u> : Seal Color	H1	H2	ID	Cable Range
Blue (BL)	8.5	10.3	6.5	Φ4.5 ~ Φ6.5
Yellow (YW)	8.5	10.3	8.5	Φ6.6 ~ Φ8.5
Green (GN)	8.5	10.3	10.5	Φ8.6 ~ Φ10.5
Red (RD)	8.5	10.3	12.5	Φ10.6 ~ Φ11.5

Unit: mm

【Note】 Design and specification are subject to change without notice.