

## Illuminated Contact Unit, momentary CTLF

### General Data

Type reference	CTLF
Description	Illuminated Electronic Contact Block with snap action
Approvals	CCC, cCSAus, CE, NV, CE
Nature of contact	1 inverter
Protection class	II (protective insulation)
Operation travel	3 mm
Connection type	Faston terminals 2.8x0.8 mm
Contact material	gold-plated 1.5µm
Max. storage temperature	-50°C ... 85°C
Max. operating temperature	-30°C ... 70°C, without illumination -30°C ... 55°C, using incandescent lamps -30°C ... 65°C, using LEDs
Mechanical life	1 million switching cycles
Electrical life (rated load)	1 million operations at rated load
Contact resistance NO	< 50 mOhm (new state)
Contact resistance NC	< 100 mOhm (new state)
Bouncing time NO	< 10ms
Bouncing time NC	< 10ms

### Technical Data - Lamp

Lamp socket	T5,5K
Max. lamp voltage	60V
Max. lamp output	1.2W
Definition	X1...anode, X2...cathode

### Electrical Features

Rated voltage	20mV ... 48V AC/DC
Rated current	0.01mA ... 100mA

### Electrical Data acc. to EN 61058-1 "micro disconnection", µ

Rated voltage	250V~
Rated current	max. 100 mA

Contact opening distance	< 3 mm (μ)
Creepage resistance	II / PTI 400V
Insulation resistance	> 100 MOhm/500 V
Test voltage	500V (61058-1 Tab.12 )
Pollution degree	2
Electrical life (additional test)	50000

### Note

The applicability of the "micro disconnection" (μ) acc. to EN 61058-1 is regulated in the relative product standards which have to be observed by the customer (product designer).

Faston terminals 2.8x0.8mm are not suitable for manual soldering.

### Electrical data acc. to IEC/EN 60947-5-1 (VDE 0660 Sect. 200)

	alternate current	direct current
Utilisation category	AC12	DC12
Rated insulation voltage Ui	60V	60V
Rated operating voltage Ue	48V	48V
Rated operating current Ie	0.1A	0.1A
Continuous thermal current	100mA	100mA

### Remark

GB14048.5-2008 (IEC60947-5-1)

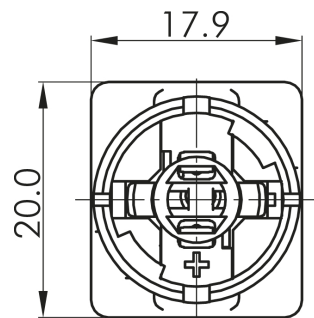
### Elektrische Daten nach C22.2 No. 14-10

Rated voltage	20mV ... 48V AC/DC
Rated current	0.01mA ... 100mA

Illustration:



Dimensional drawing:



Wiring diagram:

