

Plug ProTOP  
Part no. 160

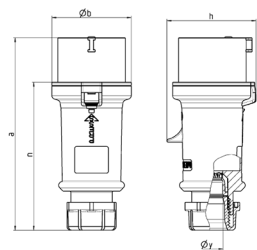


- screw terminals
- cable gland and sealing
- strain relief and protection against kinking
- enclosure with thread lock and safety slide

Technical specifications

|                           |                 |
|---------------------------|-----------------|
| Ampere                    | 32 A            |
| Poles                     | 3 p             |
| Voltage                   | 230 V           |
| Clock position            | 6 h             |
| Hertz                     | 50-60 Hz        |
| Connection technology     | Screw terminals |
| Contact                   | standard        |
| Protection type           | IP 44           |
| Weight                    | 250 g           |
| Declaration of Conformity | VDE, EAC, CQC   |

Drawing



| Drawing<br>2 MB 214      | Amp.<br>Poles | 16   |       |       | 32   |      |     |
|--------------------------|---------------|------|-------|-------|------|------|-----|
|                          |               | 3    | 4     | 5     | 3    | 4    | 5   |
| Dim. in mm               | a             | 148  | 160   | 160   | 197  | 197  | 197 |
|                          | b             | 55   | 65.6  | 65.6  | 75   | 75   | 75  |
|                          | h             | 61   | 72.5  | 72.5  | 80.5 | 80.5 | 85  |
|                          | n             | 112  | 123.5 | 123.5 | 152  | 152  | 152 |
|                          | y             | 14.5 | 16    | 16    | 22   | 22   | 22  |
| Terminal for cond. cross |               | 1    | 1     | 1     | 2.5  | 2.5  | 2.5 |
| section (mm²) min.-max.  |               | —2.5 | —2.5  | —2.5  | —6   | —6   | —6  |