

Phase inverter plug ProTOP
Part no. 3319A

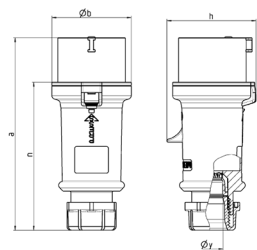


- screw terminals
- cable gland and sealing
- strain relief and protection against kinking
- enclosure with thread lock and safety slide

Technical specifications

| | |
|---------------------------|-----------------|
| Ampere | 16 A |
| Poles | 5 p |
| Voltage | 400 V |
| Clock position | 6 h |
| Hertz | 50-60 Hz |
| Connection technology | Screw terminals |
| Contact | standard |
| Protection type | IP 44 |
| Weight | 181 g |
| Declaration of Conformity | VDE, EAC |

Drawing



| Drawing 2 MB 214 | Amp. Poles | 16 | | | 32 | | |
|--------------------------|---------------|------|-------|-------|------|------|-----|
| | | 3 | 4 | 5 | 3 | 4 | 5 |
| Dim. in mm | a | 148 | 160 | 160 | 197 | 197 | 197 |
| | b | 55 | 65.6 | 65.6 | 75 | 75 | 75 |
| | h | 61 | 72.5 | 72.5 | 80.5 | 80.5 | 85 |
| | n | 112 | 123.5 | 123.5 | 152 | 152 | 152 |
| | y | 14.5 | 16 | 16 | 22 | 22 | 22 |
| Terminal for cond. cross | | 1 | 1 | 1 | 2.5 | 2.5 | 2.5 |
| section (mm²) min.-max. | | —2.5 | —2.5 | —2.5 | —6 | —6 | —6 |