

Before fixing the switch in place, ensure that it communicates reliably with the EnOcean Gateway from the proposed location.

For instructions on pairing the switch with a Helvar 434 EnOcean Gateway, see the 434 Installation Guide.

Mounting the switch unit on metallic surfaces may restrict the radio signal transmission range.

Maximum number of switch panels per gateway: 20

Operating frequency: 868 MHz ISM band (Europe)

Range: 30 m (unobstructed space)

Material: Switch rockers: plastic. Frame: Stainless steel

IP rating: IP 30

Temperature: Ambient: 0°C to +50°C. Storage: -10°C to +70°C.

Relative Humidity: Max 90%, non-condensing

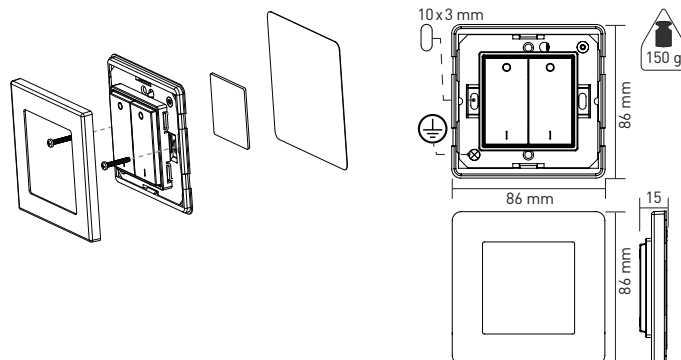
EMC EN 301489-1 & EN 301489-3

Safety: EN 60950

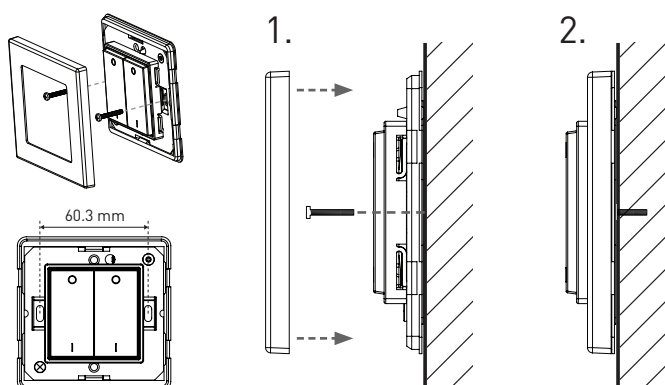
R & TTE: 1999/5/EC

Wireless protocol: ISO/IEC 14543-3-10

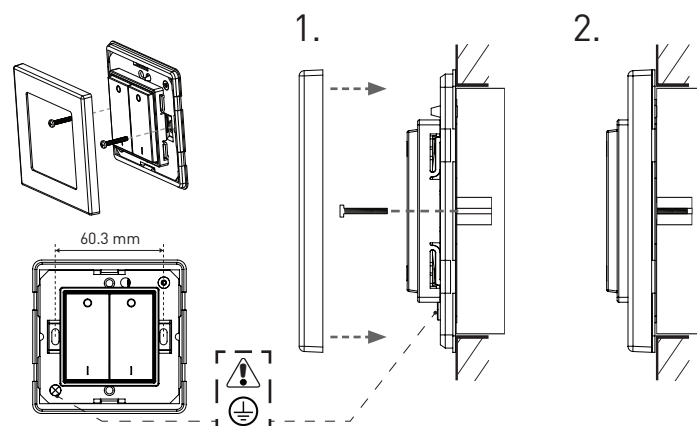
Environment: Complies with WEEE and RoHS directives



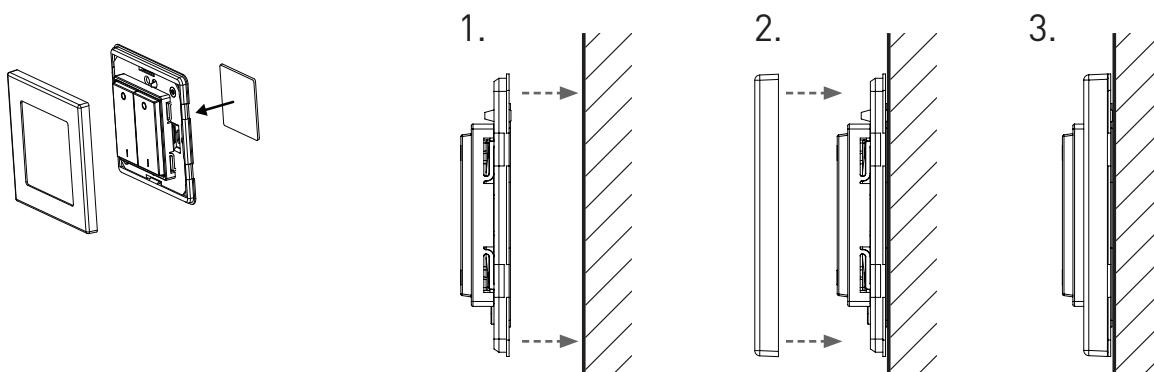
Screw to solid wall



Screw to backbox



Stick to wall or other surface



Stick to glass or other smooth surface

