

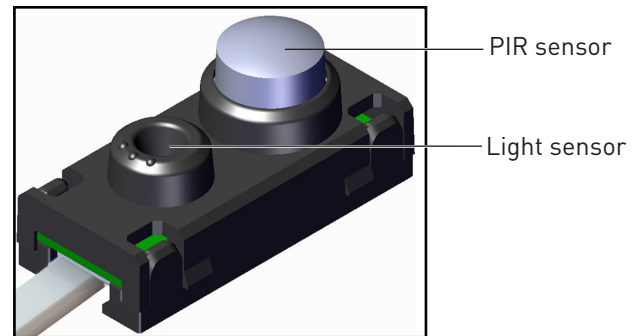
Active+ Sense (3021, 302101) Datasheet

The Active+ Sense is a small luminaire-based sensor that combines a light sensor for constant light control and a passive infrared movement detector.

This sensor can be used on the self-learning smart wireless lighting control solution ActiveAhead as well as on intelligent luminaire control solution Active+.

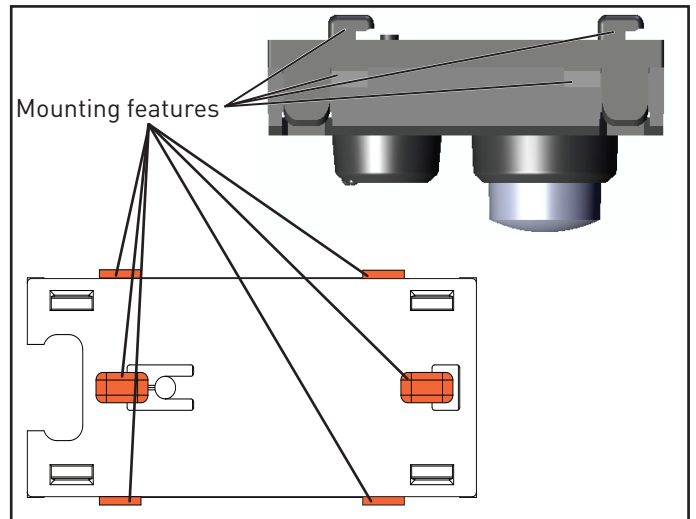
The Active+ Sense plugs into an ActiveAhead Control Unit or in the Active+ usage to an Active+ LED driver.

If the sensor is connected to non-SELV control gear, the luminaire must be Class I.

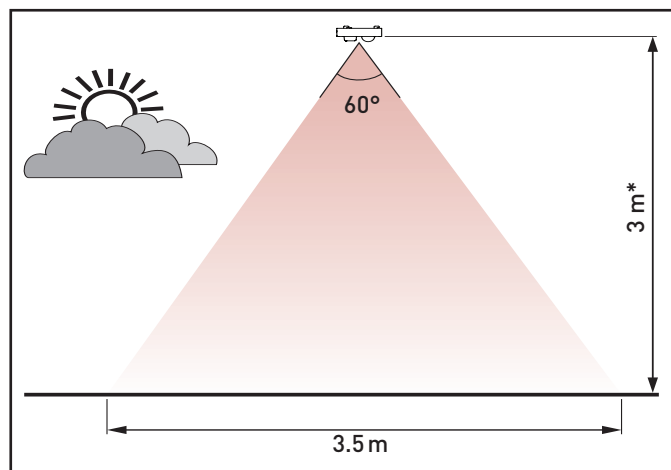


Key Features

- Small and inconspicuous, it does not change the appearance of the luminaire.
- Provided with mounting features that can be snapped into sheet metal: two on each long side, and two on the rear.
- Part of the ActiveAhead self-learning wireless lighting control solution.

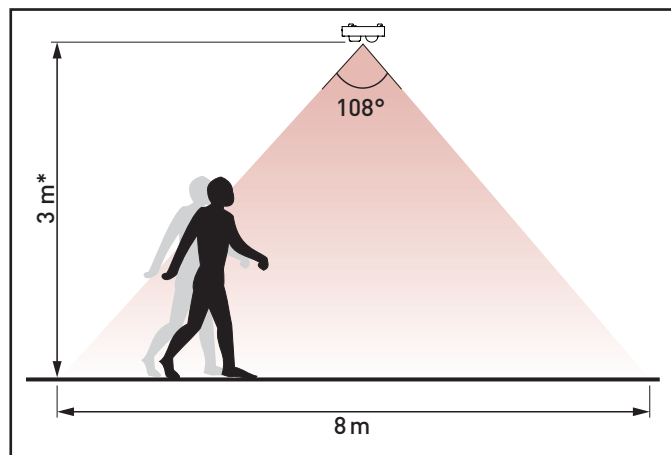


Light Sensor - For constant light functions



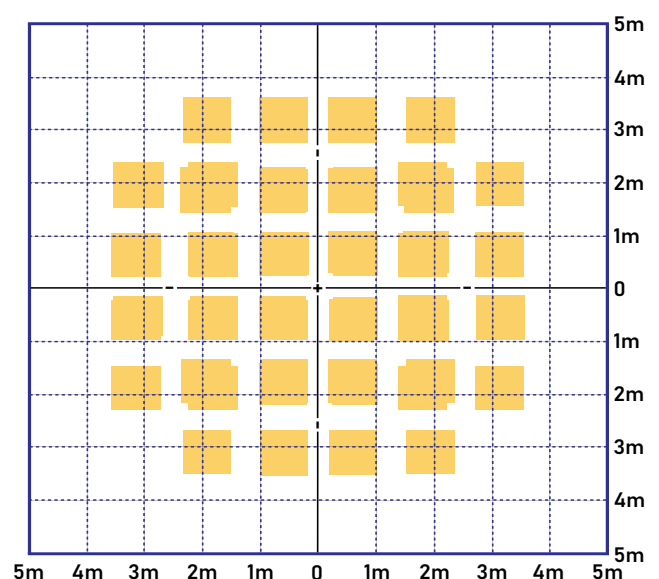
*Max recommended height 3 m

Presence Detector - Passive infrared (PIR)



*Max recommended height 4 m

Detection pattern at floor level for 2.5 meters mounting height



Technical Data

Connections

ActiveAhead/Active+: Flexible cable terminated with a four-way, 2 mm keyed connector
 Note: If the sensor is connected to non-SELV control gear, the luminaire must be Class I.

Mechanical data

Dimensions: 32.4 mm × 15.5 mm × 18 mm

Material (casing): Fire-retardant PC/ABS blend.

Colour: Black (RAL 9006): Order code 3021B
 White (RAL 9003): Order code 3021

IP code: IP30

Weight: 22 g

Operating conditions

Ambient temperature: -20 °C to +50 °C
 Note: The temperature difference between the detection target and the background must be at least 4 °C.

Relative humidity: Max. 85 %, noncondensing

Storage temperature: -20 °C to +70 °C

Illuminance: 5 lx to 5000 lx

Conformity and standards

EMC emission: EN 55015

EMC immunity: EN 61547

Safety: EN 61347-2-11

Environment: Complies with RoHS directive.

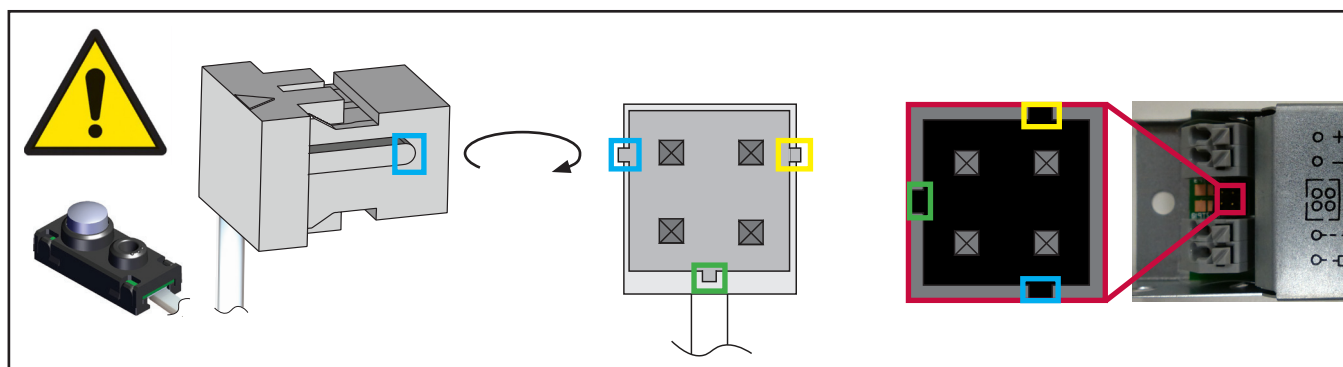
Cable Information

Order Code: 3021015 Length: 30cm, Colour: White

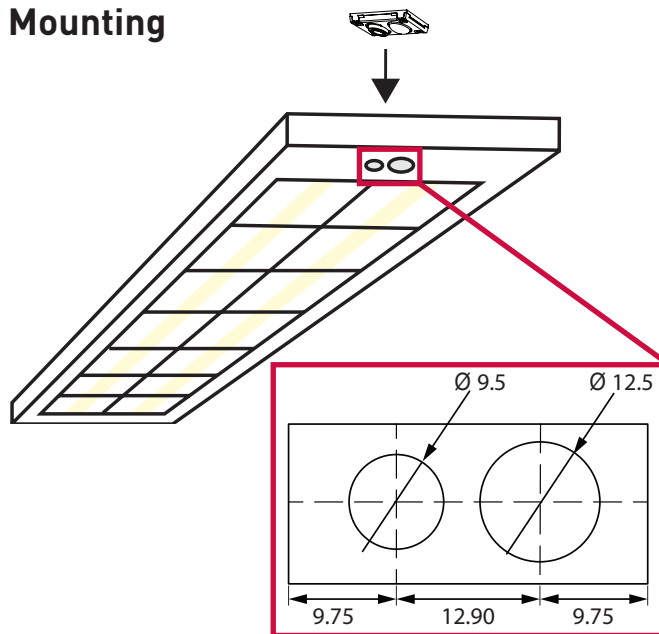
Order Code: 302101 Length: 80cm, Colour: White

Order Code: 3021016 Length: 150cm, Colour: White

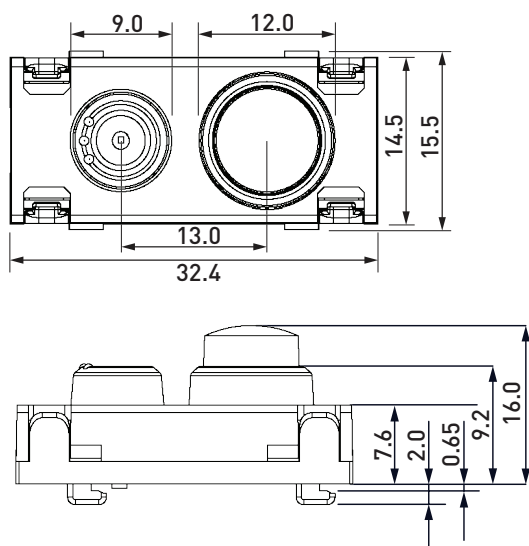
Connection



Mounting



Dimensions (mm)



Note: Sensor holders are available to be used with the Active+ Sense:

5691 - ActiveAhead Sense Rectangular Sensor holder

5692 - ActiveAhead Sense Circular Sensor holder