

Motion detector

IS 345 MX Highbay

LiveLink - surface, sq.
EAN 4007841 009731

STEINEL[®]
PROFESSIONAL



infrared sensor
360°



max. 30 x 4 m

2000w

max. 2000 W



IP54



2 - 1000 lux



5 sec - 15 min



ideal 4 - 14 m

TEACH

Teach mode



energy saving

5 JAHRE
HERSTELLER
GARANTIE

manufacturer's
warranty
steinel-professional.de/garantie

Function description

Surveillance on the highest level. Infrared motion detector IS 345 MX Highbay for indoors, ideal for large heights in depots, high-bay warehouses, machine shops, check-in areas and departure lounges, installation height 14 m, detection zone 30 x 4 m (radial), large terminal compartment for easy installation.

Technical specifications

Type	Motion detectors
Dimensions (L x W x H)	95 x 95 x 65 mm
Mains power supply	16 V
Power supply, detail	DALI bus
Number of Dali users	3
Sensor Technology	passive infrared
Application, place	Indoors
Application, place, room	high-bay warehouse
Installation site	ceiling
Type of installation	Surface wiring
Switching zones	280 switching zones
Electronic scalability	No
Mechanical scalability	No
Mounting height	4,00 – 14,00 m
Optimum mounting height	12 m
Detection angle	360 °
Angle of aperture	9 °
Sneak-by guard	Yes
Capability of masking out individual segments	Yes

Reach, radial	30 x 4 m (120 m²)
Reach, tangential	30 x 4 m (120 m²)
Twilight setting TEACH	Yes
Twilight setting	2 – 1000 lx
Time setting	60 s – 60 Min.
LiveLink values	Light level, Motion detection, Presence detection
Constant-lighting control	Yes
Basic light level function	No
Settings via	LiveLink app
With remote control	No
Interconnection	Yes
IP rating	IP54
Material	Plastic
Ambient temperature	-20 – 50 °C
Colour	white
Colour, RAL	9003
Manufacturer's Warranty	5 years
Version	LiveLink - surface, sq.
PU1, EAN	4007841009731

<https://www.steinel.de>

Motion detector

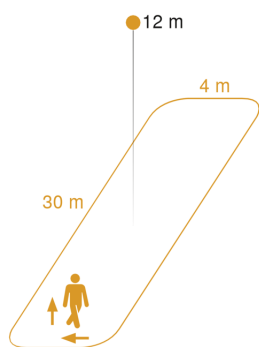
IS 345 MX Highbay

LiveLink - surface, sq.

EAN 4007841 009731

STEINEL[®]
PROFESSIONAL

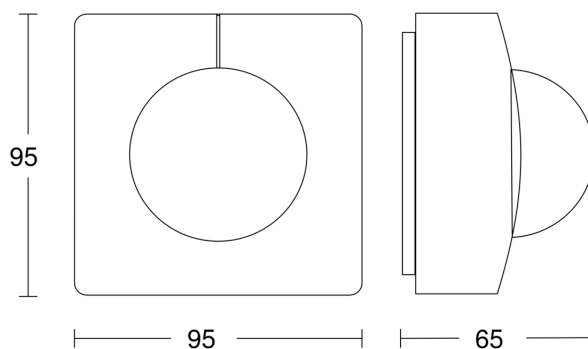
Detection Zone



Mögliche Montagehöhe: 4,00 m – 14,00 m

Orange: radial und tangential

Dimension Drawing



Circuit diagram

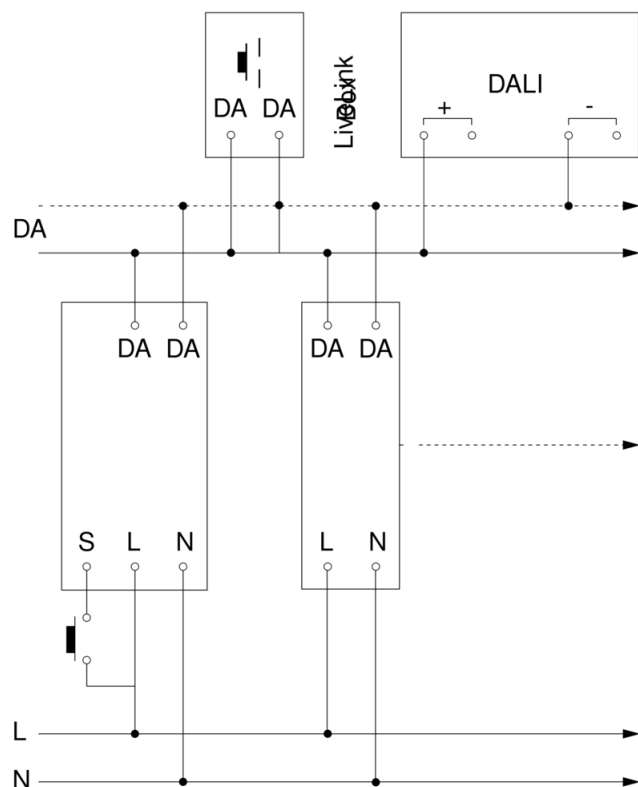
Motion detector

IS 345 MX Highbay

LiveLink - surface, sq.

EAN 4007841 009731

STEINEL[®]
PROFESSIONAL



Motion detector

IS 345 MX Highbay

LiveLink - surface, sq.

EAN 4007841 009731

