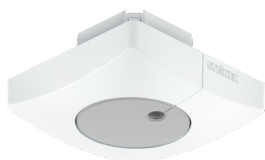


Motion detector

Light Sensor Dual

EAN 4007841033637



Functional description

No matter whether directed or diffuse measurements are needed - both work with the Light Sensor Dual! The challenge must not be underestimated. To obtain usable information on the lighting situation in a room, it is not sufficient to simply determine the general brightness. It is important to use a combination of measuring the light level at the desk, for example, and determining diffuse room brightness. This way, errors can be ruled out for better lighting control. And the STEINEL Light Sensor Dual is simply perfect for this.

Technical specifications

Type	Constant-lighting controller
Dimensions (L x W x H)	95 x 95 x 54 mm
Mains power supply	30 V
Power supply, detail	KNX bus
Sensor Technology	Light sensor
Application, place	Indoors, outdoors
Type of installation	Concealed wiring
Mounting height	2,00 – 4,00 m
Optimum mounting height	2,8 m
Twilight setting	2 – 1000 lx
KNX functions	Light output 2x, Light level, Constant-lighting control, Photo-cell controller
IP rating	IP54
Material	Plastic
Ambient temperature	-20 – 50 °C
Colour	white
Colour, RAL	9010
Manufacturer's Warranty	5 years
Version	KNX - concealed installation, square
Model	KNX