

Motion detector - Professional Line

sensIQ eNet

white

EAN 4007841 020439



infrared sensor 3 x
100°



3 zones scalable
2-20m

2500w

2500 W max.



IP54



2 - 2000 lux



5 sec - 15 min



ideal 2 - 5 m



energy saving

5 JAHRE
HERSTELLER
GARANTIE

manufacturer's
warranty
[steinel-professional.de/garantie](https://www.steinel-professional.de/garantie)



CE

Function description

King of the infrared motion detectors. The revolutionary sensIQ for indoors and out, ideal for building entrances, loading bays, installation height up to 5 m, quadruple sensor system for optimum coverage over a 300° detection angle, 20 m range (tangential), metre-precision reach setting in 3 different directions, heavy-duty relay for high switching capacity. Corner wall mount bracket included. For integrating into the eNet system using eNet wireless standard.

sensIQ eNet

white

EAN 4007841 020439

**Technical specifications**

Type	Motion detectors
Type of accessory	Corner adapter
Dimensions (L x W x H)	172 x 113 x 144 mm
Mains power supply	220 – 240 V / 50 – 60 Hz
Sensor Technology	passive infrared
Application, place	Indoors, Outdoors
Application, place, room	multi-storey / underground car park, outdoors, warehouse, front door, all round the building, courtyard & driveway, Indoors
Installation site	wall, ceiling, corner
Installation	Surface wiring
Switching zones	1360 switching zones
Electronic scalability	No
Mechanical scalability	Yes
Mounting height	2,00 – 5,00 m
Optimum mounting height	2 m
Detection angle	300 °
Angle of aperture	90 °
Sneak-by guard	Yes
Capability of masking out individual segments	Yes
Reach, detail	Reach adjustable from 2 - 20 m in 3 directions (100° in each)
Reach, radial	r = 4 m (42 m ²)

Reach, tangential	r = 20 m (1047 m ²)
Twilight setting TEACH	Yes
Twilight setting	2 – 2000 lx
Time setting	5 s – 15 Min.
Switching output 1, number of LEDs / fluorescent lamps	8 pcs.
Constant-lighting control	No
Basic light level function	No
Functions	Connection to eNet server, Pushbutton configuration
With bus coupling	No
Settings via	Remote control, Potentiometers, eNet
With remote control	Yes
Interconnection	Yes
Material	Plastic
Ambient temperature	-20 – 50 °C
Colour	white
Colour, RAL	9010
IDs, certificates	VDE
Manufacturer's Warranty	5 years
Version	white
PU1, EAN	4007841020439

Accessories

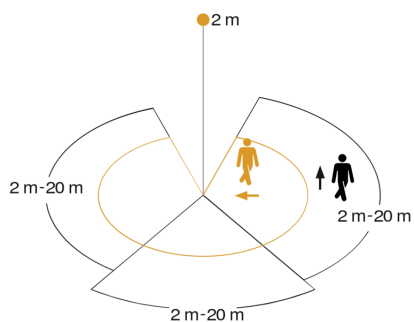
EAN 4007841 009151	Remote control Smart Remote
EAN 4007841 609115	sensIQ floating module MPF1
EAN 4007841 032838	eNet switching actuator
EAN 4007841 032821	eNet wireless hand-held transmitter 2x

sensIQ eNet

white

EAN 4007841 020439

Detection Zone



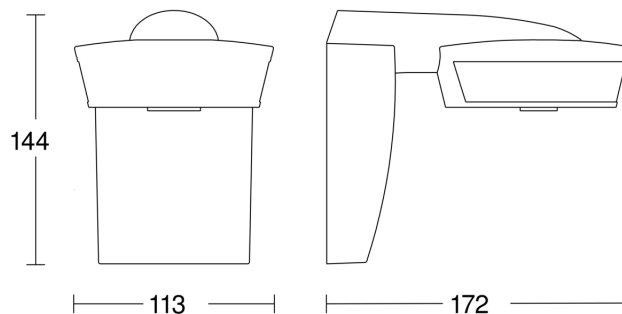
Mögliche Montagehöhe: 2,00 m – 5,00 m

Orange: radial

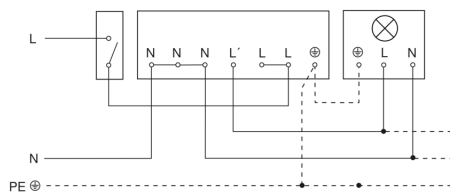
Schwarz: tangential

3 skallerbare Zonen

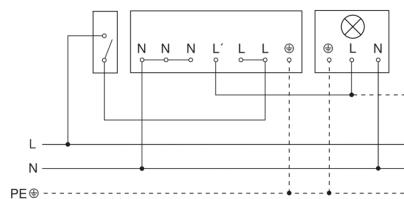
Dimension Drawing



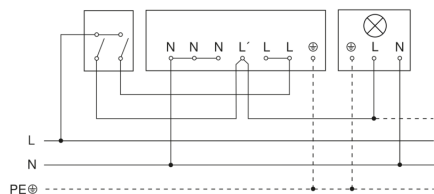
Light without neutral conductor



Light with neutral conductor



Connection using two-circuit switch for manual and automatic operation



Connection via a two-way switch for manual override and automatic operation

