

# IS 2300 ECO

black

EAN 4007841 034726



infrared sensor  
300°



max. 12 m

2000w

max. 2000 W



IP54



80° horizontal



2 - 2000 lux



10 sec - 15 min



Ideal 2 m



energy saving



manufacturer's  
warranty  
[steinel-professional.de/garantie](https://www.steinel-professional.de/garantie)

## Function description

One for every corner. Infrared motion detector IS 2300 ECO, for indoors and out, ideal for corner situations, irregular shaped spaces, corridors, installation height 2 m, 300° angle of coverage, max. reach 12 m (tangential), selectable time and twilight threshold, turning sensor head (80°) for precision targeting.

## Technical specifications

Type	Motion detectors
Dimensions (L x W x H)	85 x 60 x 95 mm
Mains power supply	230 – 240 V / 50 Hz
Sensor Technology	passive infrared
Application, place	Indoors
Application, room	outdoors, front door, all round the building, terrace / balcony, courtyard & driveway
Installation site	wall, corner
Installation	Surface wiring
Switching zones	456 switching zones
Electronic scalability	No
Mechanical scalability	No
Mounting height	1,80 – 4,00 m
Optimum mounting height	2 m
Detection angle	300 °
Angle of aperture	180 °
Sneak-by guard	Yes
Capability of masking out individual segments	Yes
Reach, tangential	r = 12 m (377 m <sup>2</sup> )

Twilight setting TEACH	No
Twilight setting	2 – 2000 lx
Time setting	10 s – 15 Min.
Switching output 1, resistive	2000 W
Constant-lighting control	No
Basic light level function	No
Settings via	Potentiometers
With remote control	No
Interconnection	No
IP-rating	IP54
Material	Plastic
Ambient temperature	-20 – 50 °C
Colour	black
Colour, RAL	9005
IDs, certificates	VDE
Manufacturer's Warranty	5 years
Version	black
PU1, EAN	4007841034726

# IS 2300 ECO

black

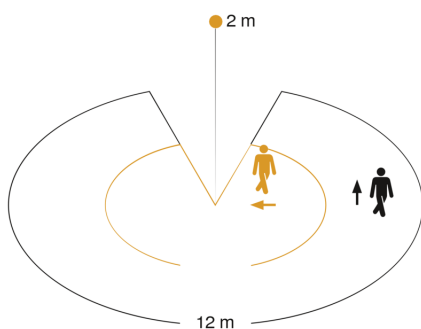
EAN 4007841 034726

## Accessories

EAN 4007841 630119

Corner wall mount 01

## Detection Zone

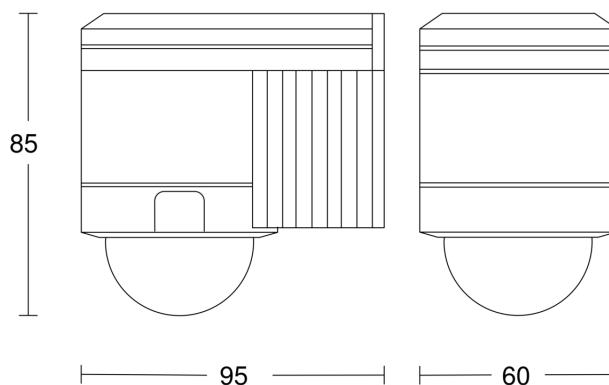


Mögliche Montagehöhe: 1,80 m – 4,00 m

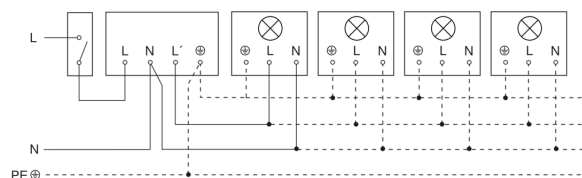
Orange: radial

Schwarz: tangential

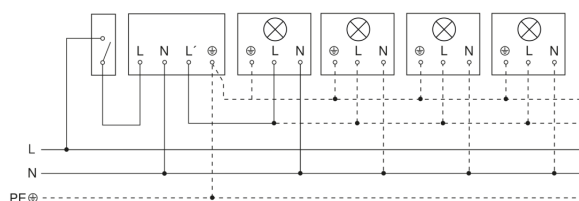
## Dimension Drawing



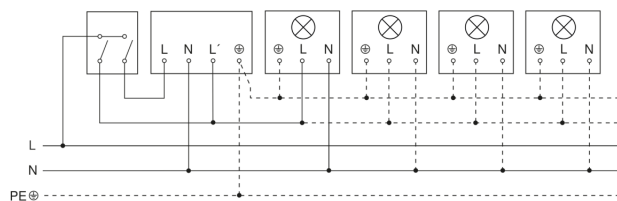
## Light without neutral conductor



## Light with neutral conductor



## Connection using two-circuit switch for manual and automatic operation



## Connection via a two-way switch for manual override and automatic operation

