

ABB MEASUREMENT & ANALYTICS | DATA SHEET

PZT, PZF, PZH and non-configurable items

Threaded, flanged and hygienic threaded adapters and accessories



Measurement made easy

Engineered solutions for all applications

Stainless steel construction

- Optimized for use in harsh ambient conditions
- Extremely robust

Wide selection of versions

- allows to meet application specific requirements

Specifications

Please refer to the ordering information for variants availability

Pressure limits

Flange to EN 1092-1	AISI 316 L ss flange @ 20 °C
PN 16	16 bar
PN 40	40 bar

Flange to ASME B16.5	AISI 316 L ss flange @ 100 °F (38 °C)
Class 150	275 psi
Class 300	720 psi

Materials

Adapters

AISI 316 ss / AISI 316 L ss (dual grade)

Flanges

AISI 316 L ss

Process connections

Adapters

1/2 in - 14 NPT female, 1/2 in G male, 1 in G male,
1 in - 11.5 NPT female, 1 in - 11.5 NPT male, M20 x 1.5 male

Flanges

1 in, 2 in, 3 in to ASME; DN25, DN50, DN80 to EN 1092-1.

Weight

- Adapters 100 to 900 g (0.22 to 2 lb) approx.
- Flanges 950 to 7000 g (2.1 to 15.6 lb) approx.

Packaging

Cardboard box

Mounting dimensions

(not design data) - dimensions in mm (inch)

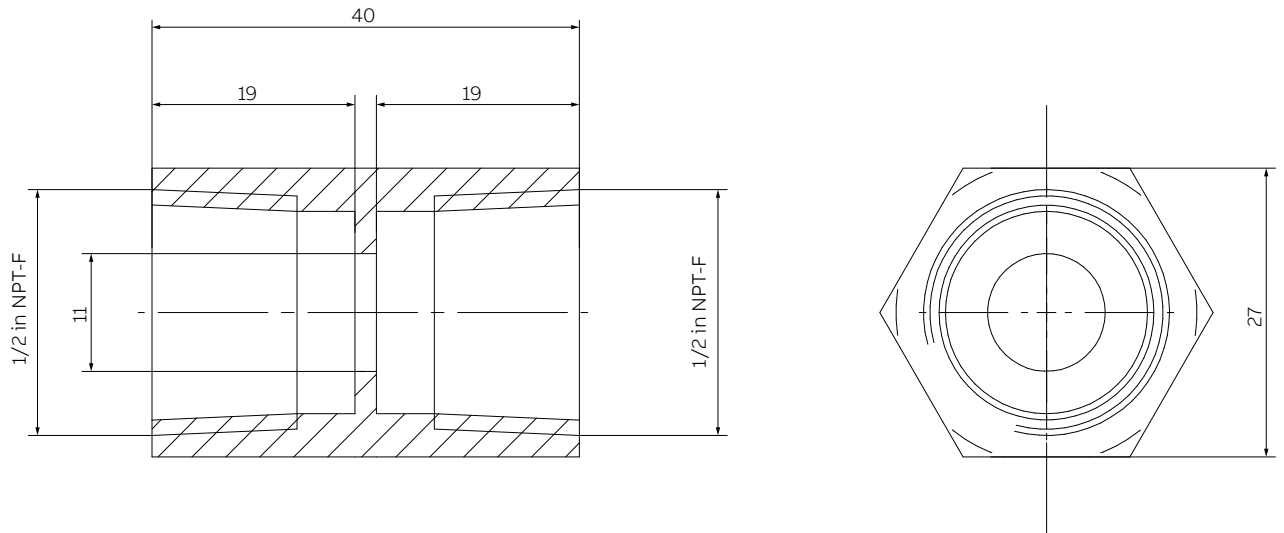


Figure 1 Straight adapter to 1/2 in NPT female process connection

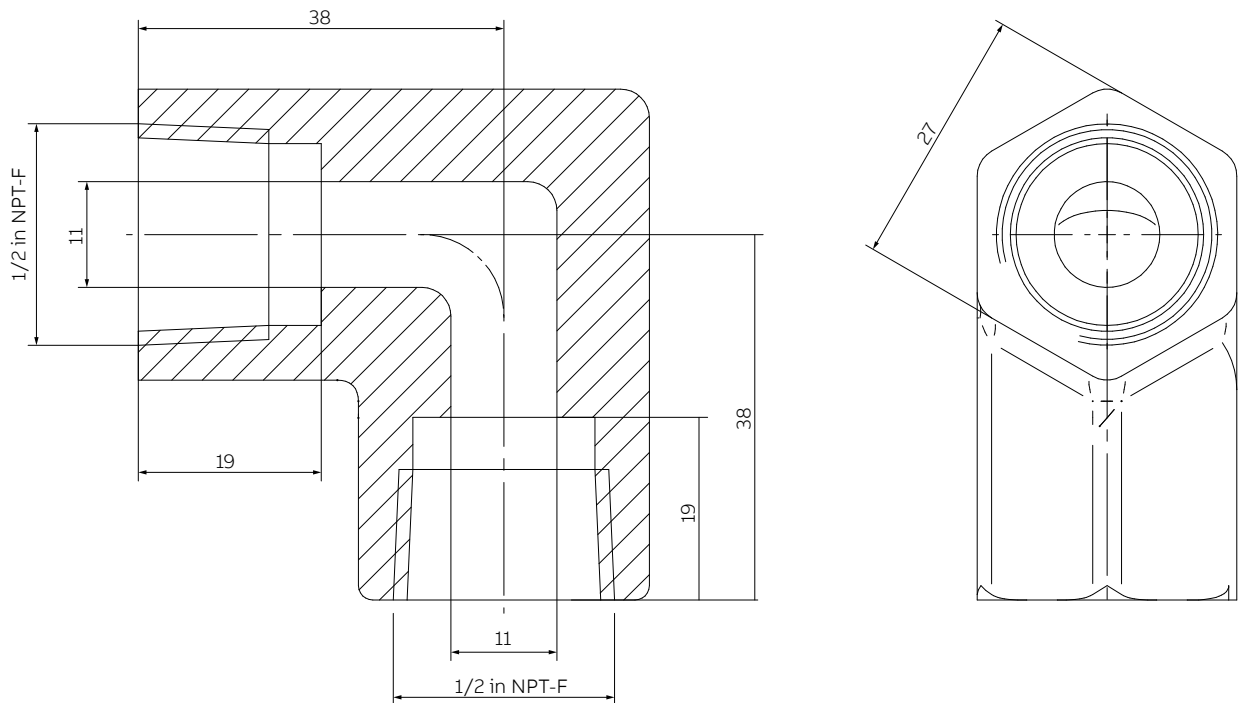


Figure 2 Angle adapter to 1/2 in NPT female process connection

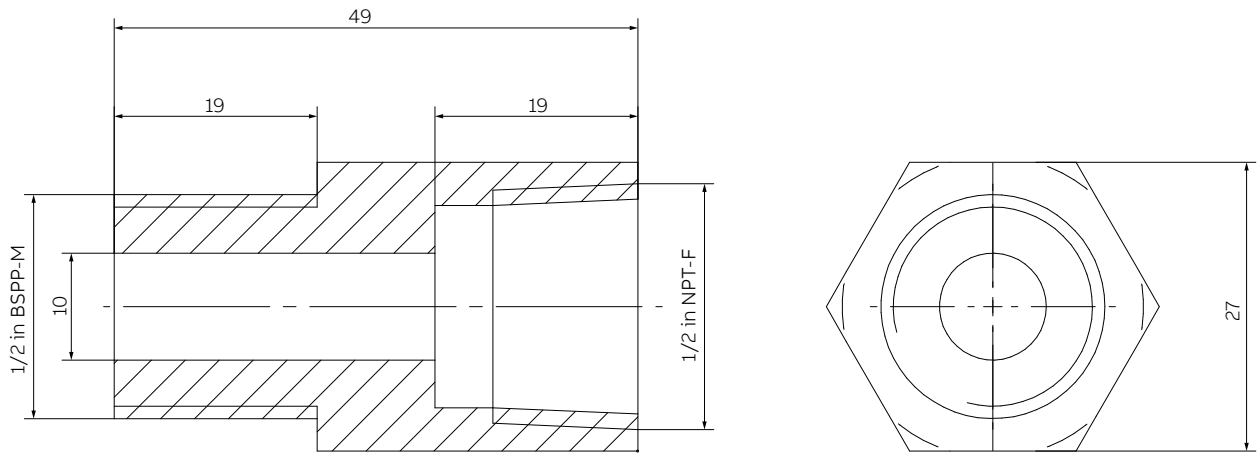


Figure 3 Straight adapter to 1/2 in G male process connection

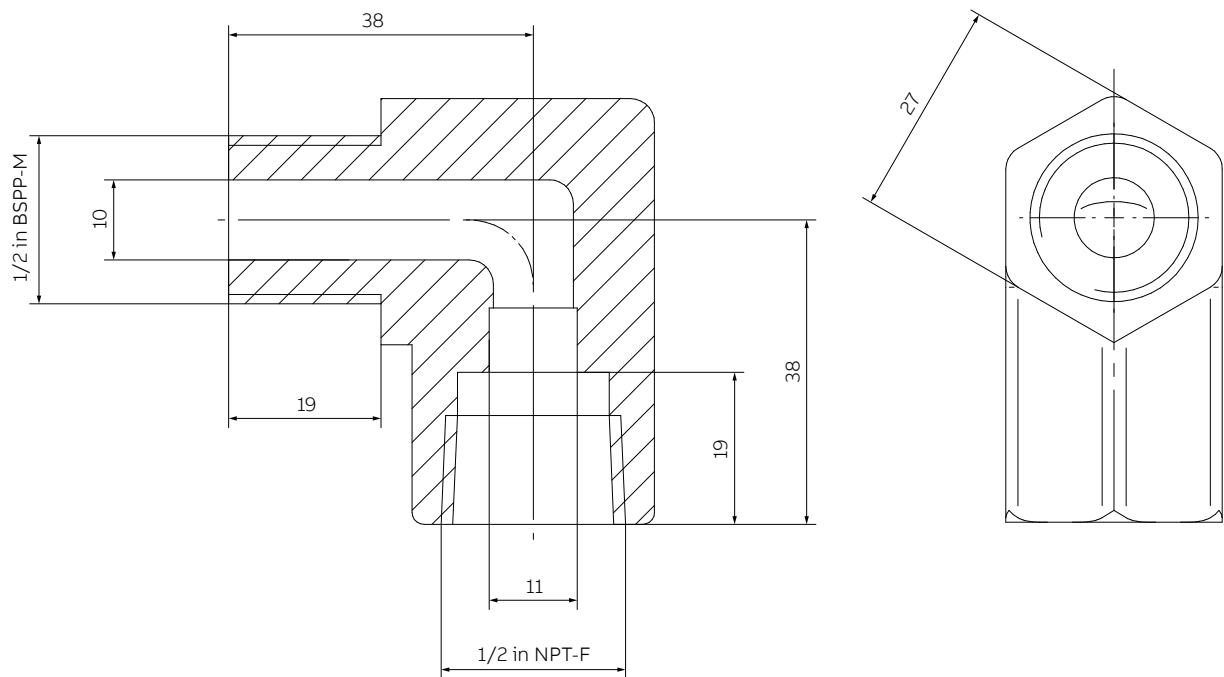


Figure 4 Angle adapter to 1/2 in G male process connection

...Mounting dimensions

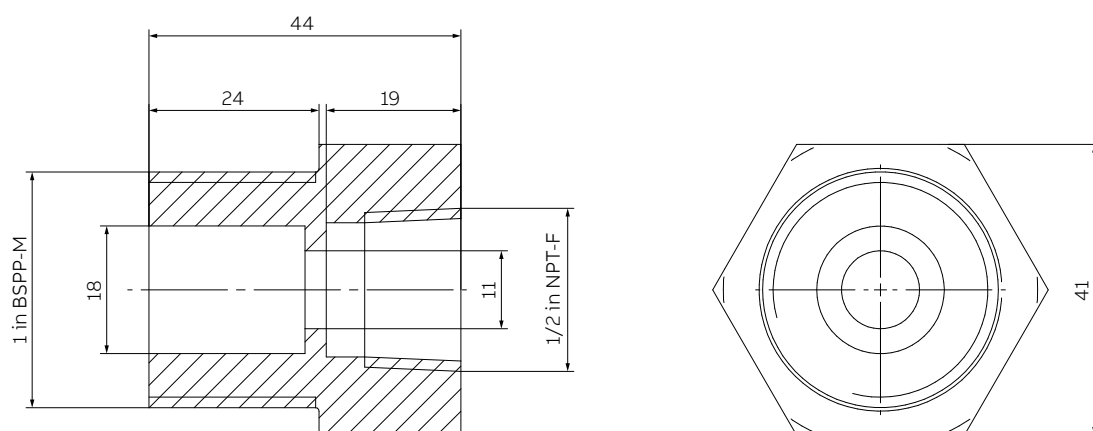


Figure 5 Straight adapter to 1 in G male process connection

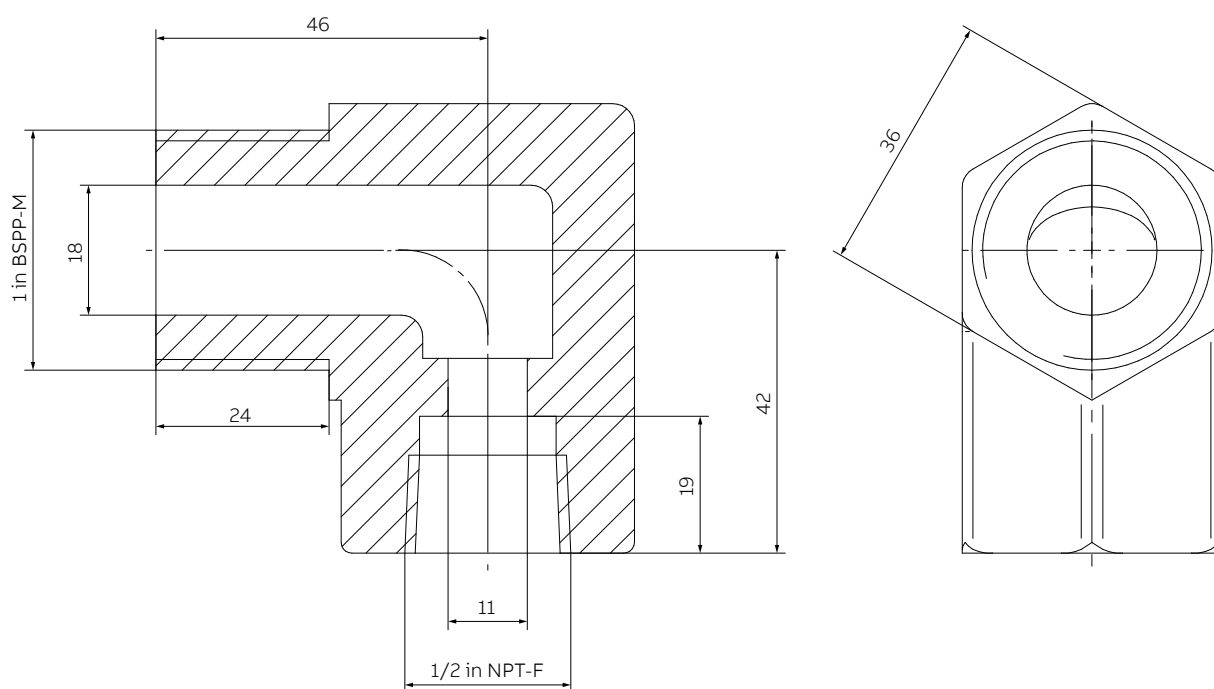


Figure 6 Angle adapter to 1 in G male process connection

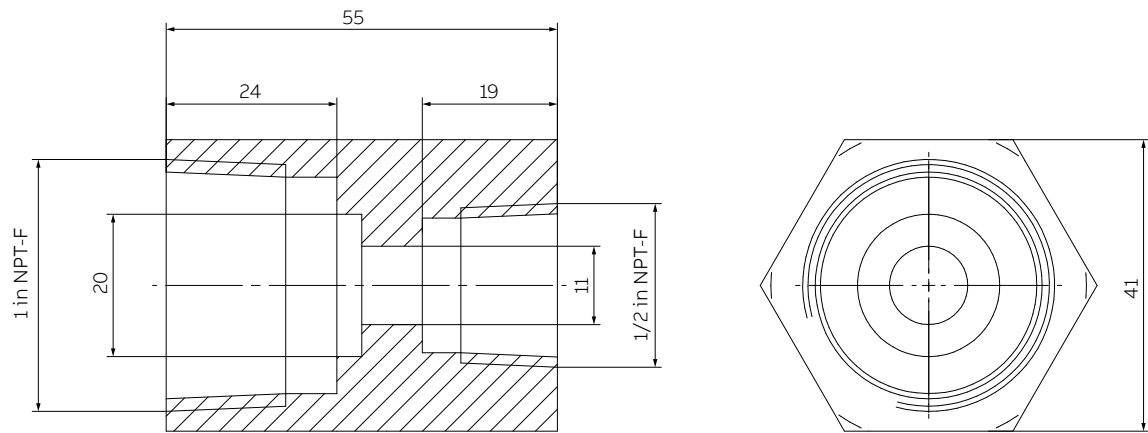


Figure 7

Figure 8 Straight adapter to 1 in NPT female process connection

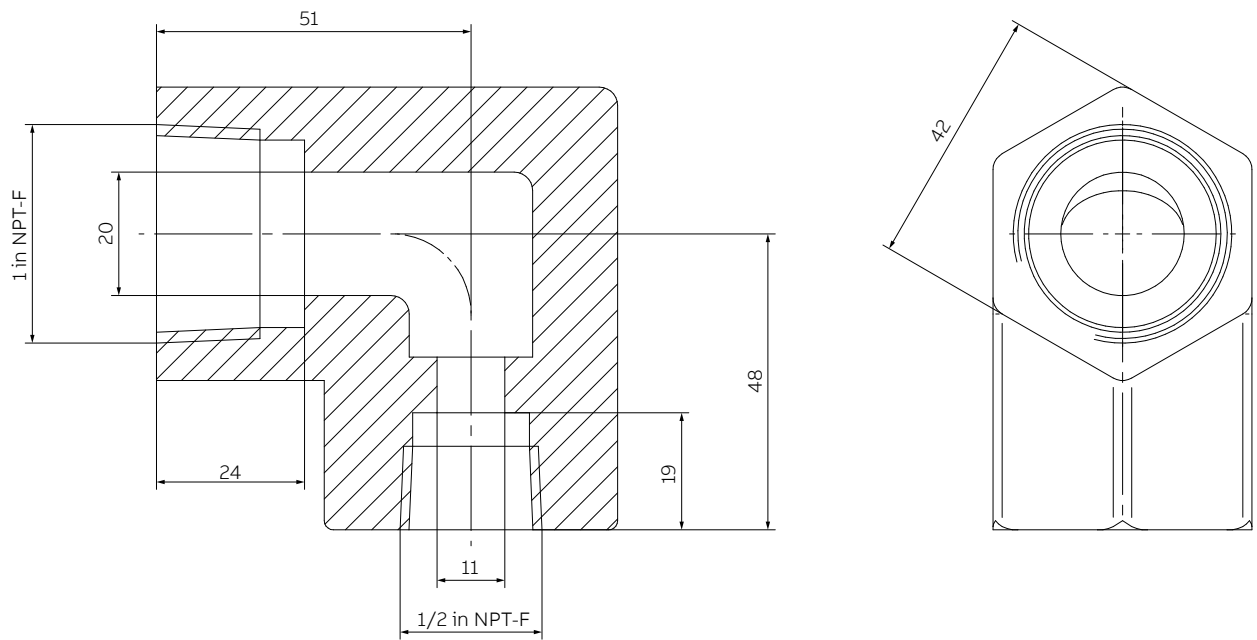


Figure 9 Angle adapter to 1 in NPT female process connection

...Mounting dimensions

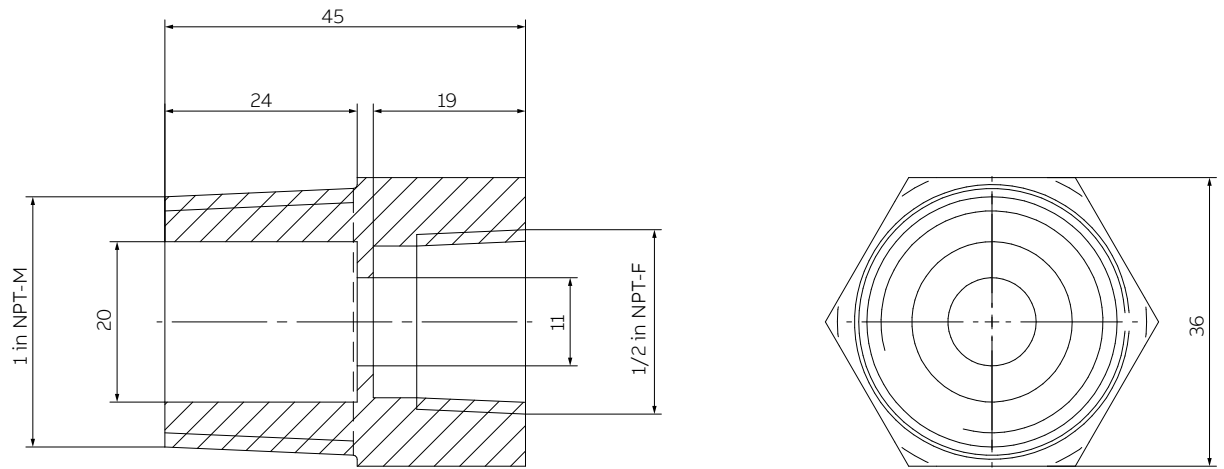


Figure 10 Straight adapter to 1 in NPT male process connection

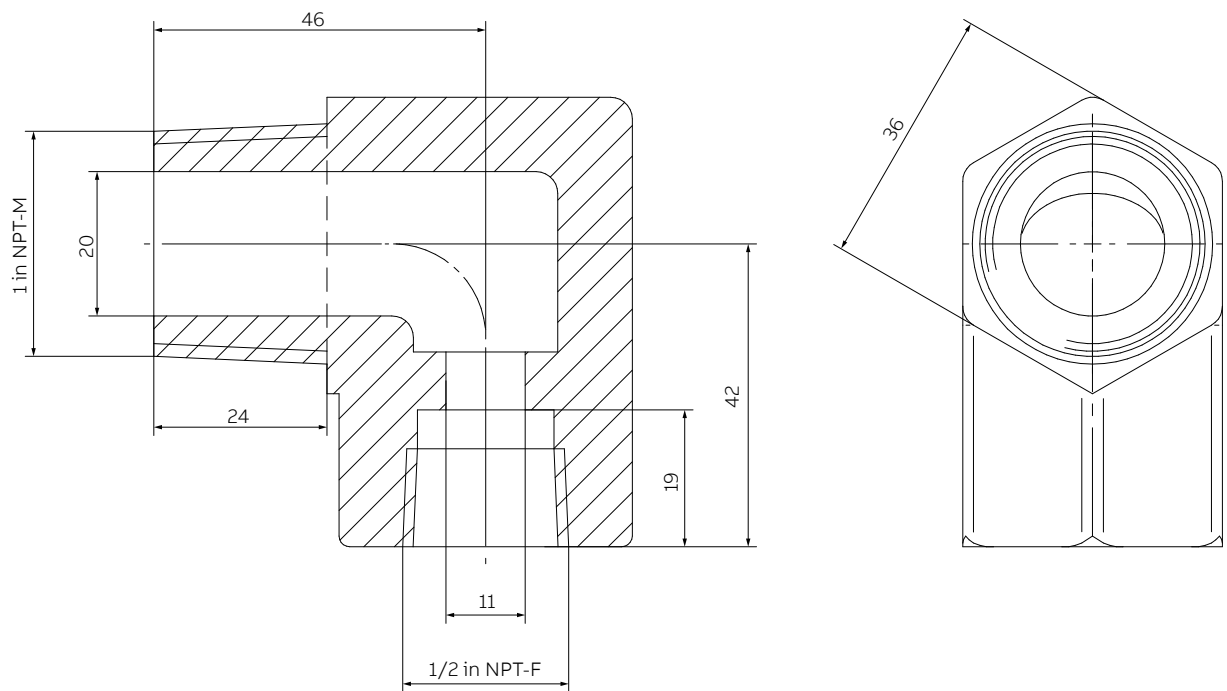


Figure 11 Angle adapter to 1 in NPT male process connection

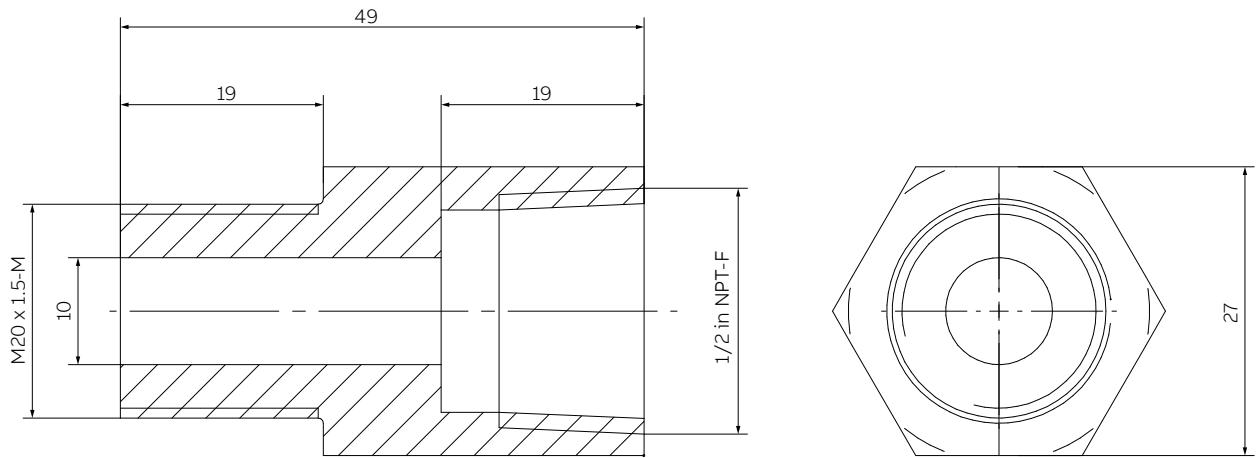


Figure 12 Straight adapter to M20 x 1.5 male process connection

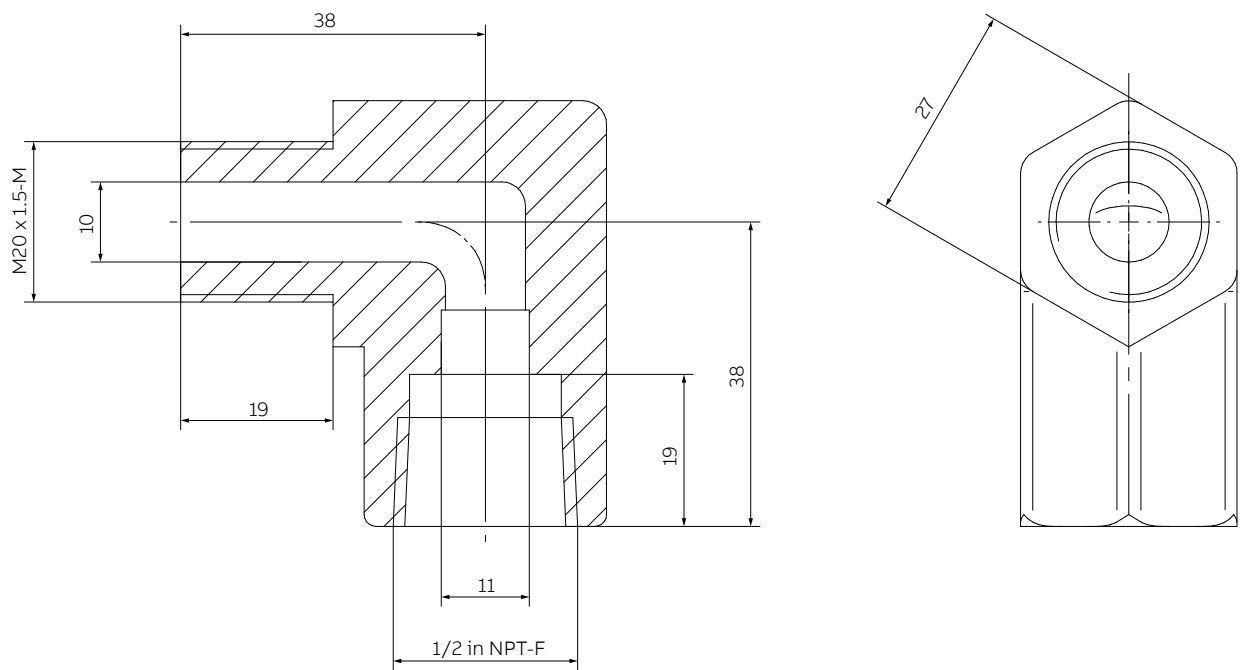
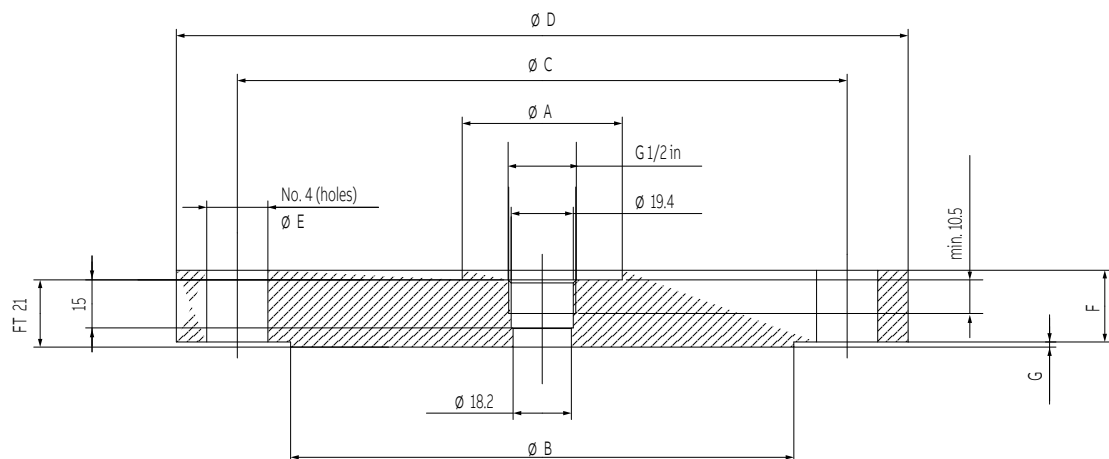


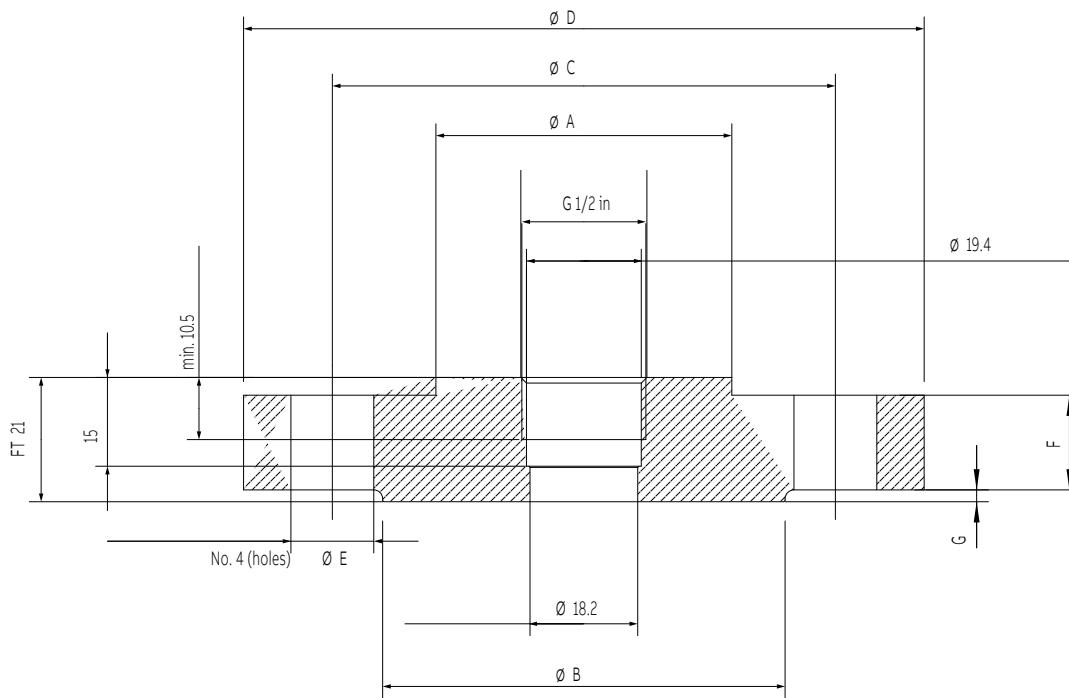
Figure 13 Angle adapter to M20 x 1.5 male process connection

...Mounting dimensions



Dimensions mm (inches) for ASME flange connection for PGS100/PAS100								
Size/Rating	A (dia)	B (dia)	C (dia)	D (dia)	E (dia)	F	G	N° of holes
1 in ASME CL 150	50 (1.97)	50.8 (2)	79.2 (3.12)	108 (4.25)	15.9 (0.63)	12.7 (0.5)	1.6 (0.063)	4
1 in ASME CL 300	50 (1.97)	50.8 (2)	88.9 (3.5)	124 (4.88)	19.1 (0.75)	15.7 (0.62)	1.6 (0.063)	4
2 in ASME CL 150	50 (1.97)	91.9 (3.62)	120.7 (4.75)	152.4 (6)	19.1 (0.75)	17.5 (0.69)	1.6 (0.063)	4
2 in ASME CL 300	50 (1.97)	91.9 (3.62)	127 (5)	165.1 (6.5)	19.1 (0.75)	20.6 (0.81)	1.6 (0.063)	4
3 in ASME CL 150	50 (1.97)	127 (5)	152.4 (6)	190.5 (7.5)	19.1 (0.75)	22.4 (0.88)	1.6 (0.063)	4
3 in ASME CL 300	50 (1.97)	127 (5)	168.1 (6.62)	209.6 (8.25)	22.2 (0.87)	26.9 (1.06)	1.6 (0.063)	4

Figure 14 ASME flange connection for PGS100/PAS100



Dimensions mm (inches) for EN flange connection for PGS100/PAS100								
Size/Rating	A (dia)	B (dia)	C (dia)	D (dia)	E (dia)	F	G	N° of holes
DN 25 EN 1092-1 PN 16	50 (1.97)	68 (2.68)	85 (3.35)	115 (4.53)	14 (0.55)	16 (0.63)	2 (0.078)	4
DN 25 EN 1092-1 PN 40	50 (1.97)	68 (2.68)	85 (3.35)	115 (4.53)	14 (0.55)	16 (0.63)	2 (0.078)	4
DN 50 EN 1092-1 PN 40	50 (1.97)	102 (4.02)	125 (4.92)	165 (6.50)	18 (0.71)	17 (0.67)	3 (0.118)	4
DN 80 EN 1092-1 PN 40	50 (1.97)	138 (5.43)	160 (6.30)	200 (7.87)	18 (0.71)	24 (0.94)	3 (0.118)	4

Figure 15 EN 1092-1 flange connection for PGS100/PAS100

Ordering Information

Accessory ordering information for model PZT threaded adapters and PZF flanged adapters

Select one character or set of characters from each category and specify complete additional catalog number.

BASE MODEL - 1st to 3rd characters	PZT	X	X	X
Screwed process connection adapter (suitable with process connection size code "B" at 13th character of PxS100)				
Connection thread to transmitter - 4th character				
1/2 in-14 NPT female		2		
Front bonded G 1 in hygienic (adapter-compatible)		3		
Front bonded G 1/2 in		5		
Process connection thread to process - 5th character				
1/2 in - 14 NPT female			A	
1/2 in G male			B	
1 in G male			C	
1 in - 11.5 NPT female			D	
1 in - 11.5 NPT male			E	
M20 x 1.5 male			F	
1/4 in NPT male			G	
Type of connection (orientation) - 6th character				
Straight				S
90° angle				A

BASE MODEL - 1st to 3rd characters	PZF	X	XX	XX	XX
Flanged process connection adapter (suitable with process connection size code "P" at 13th character of PxS100)					
Connection to transmitter - 4th character					
Flanged to DP transmitter		F			
Screwed to front bonded connection		S			
Flanged connection to process - 5th and 6th characters					
ASME 1 in			A1		
ASME 2 in			A2		
ASME 3 in			A3		
ASME 4 in			A4		
EN DN25			D2		
EN DN40			D4		
EN DN50			D5		
EN DN80			D8		
Flange rating - 7th character					
ASME Class 150	(Note 1)			A	
ASME Class 300	(Note 1)			B	
EN PN16	(Note 2)			C	
EN PN16	(Note 2)			D	
Flange form/seat finish - 8th character					
Raised face (RF) serrated finish	(Note 1)				1
Form B1 to EN 1092-1	(Note 2)				2

Note 1: Not available with EN flanged connection code Dx

Note 2: Not available with ASME flanged connection code Ax

Ordering Information

Accessory ordering information for model PZH Hygienic Threaded adapter

Select one character or set of characters from each category and specify complete additional catalog number.

BASE MODEL - 1st to 3rd characters		PZH	X	XX
Screwed process connection adapter (suitable with process connection sizes at 13th character of PxF100 only)				
Connection to transmitter - 4th character				
Front bonded G 1 in hygienic (adapter-compatible)			3	
Process connection thread to process - 5th character				
Tri-Clamp ISO2852 DN 25-38 (1-1 1/2 in), DIN 32676 DN 25-40				B
Tri-Clamp ISO2852 DN 40-51 (2 in), DIN 32676 DN 50				C
Tri-Clamp ISO2852 DN 70 (3 in), DIN 32676 DN 65				D
Tri-Clamp ISO2852 DN 101.6 (4 in), DIN 32676 DN 100				E
DRD 65 mm (DN 50)				F
Diary 11851 DN40 PN40				G
Diary 11851 DN50 PN25				H
SMS 1 1/2 in PN40 (dia 35)				L
SMS 2 in PN40 (dia 45)				M
Varivent F DN25 PN25				N
Varivent N DN40 PN25				P
Neumo GR50				Q
Neumo GR65				R

Accessory ordering information for non-configurable items

Select required item(s) according to application needs

Description	Part number
Adapter AISI 303 M16x1.5 / M20x1.5 K	284876
Adapter AISI 303 M16x1.5 / 1/2 NPT K	284877
M16 plastic cable gland	9287356
M16 nickel-plated brass Ex cable gland	9287600
Harting HAN 8D straight connector	3KXP002920U0100
M12 x 1 connector	3KXP002919U0100
Welding connection front bonded G 1/2" (diam. 50 mm)	284903
Welding connection for G 1" Hygienic (universal connection)	TBC
Welding connection front bonded G 1/2" (diam. 30 mm)	TBC

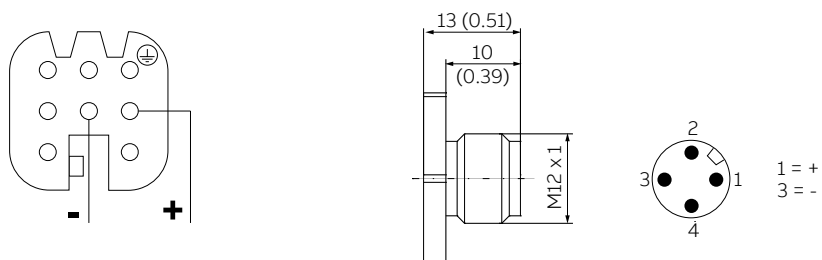


Figure 16 Pin layout of Harting HAN 8D (socket view) and M12 x 1 connector

ABB Measurement & Analytics

For your local ABB contact, visit:

www.abb.com/contacts

For more product information, visit:

www.abb.com/measurement

We reserve the right to make technical changes or modify the contents of this document without prior notice. With regard to purchase orders, the agreed particulars shall prevail.
ABB does not accept any responsibility whatsoever for potential errors or possible lack of information in this document.

We reserve all rights in this document and in the subject matter and illustrations contained therein.
Any reproduction, disclosure to third parties or utilization of its contents – in whole or in parts – is forbidden without prior written consent of ABB.

© Copyright 2021 ABB
All rights reserved