

INSTALLATION MANUAL UNIMI-1BASE™

Unimi-1Base™ pre-cast concrete foundation with adaptor for DEFA charging stations



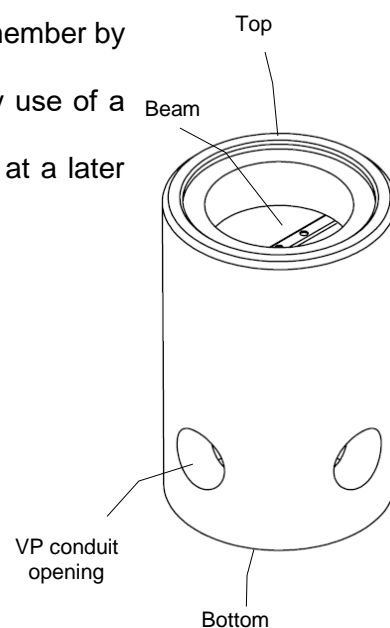
Unimi Solutions	Kap -	Kostnb. K00717	Dok namn Installation description				
	Mallens filnamn Produktbeskrivning.doc	Dok dat -	Current filename	Valid from 2014-02-06	Rev 02	Approved 2014-02-06	Sid 1 (5)

INSTALLATION MANUAL UNIMI-1BASE™

- The Unimi-1Base™ foundation member is designed for anchoring of EV charging stations. The foundation member is placed in the ground so that the top is aligned to the existing/targeted ground level^{*)}.

The EV charging station is attached to the foundation member by use of a designated adaptor, or is made “dormant” by use of a cover member if the charging station will be mounted at a later stage.

- Weight: ca 100 kg / 220 lb
- Height: ca 600 mm / 24 in
- Outer diameter: 400 + 2 mm / 16 in



- Pull VP pipes for cable/cable thread to the site.
- Dig a hole to fit the foundation. If you are in a cold climate zone, make sure to prepare the bed for frost/freezing, i.e. crush. Adjust the depth of the hole so that the foundation's top will be in level with the surrounding ground/pavement^{*)}.
- Use the provided VP-covers for those holes on the foundation sides that will not be in use.

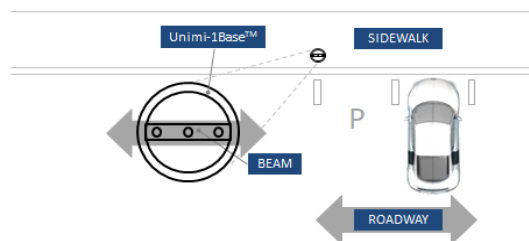
^{*)} If Unimi-1base crash protections are to be installed as shown in picture on page 1, installation should be done so that the fastening screws of the two protection poles are above ground level. This is to accommodate later replacement of damaged poles

Unimi Solutions <small>Mallens filnamn Produktbeskrivning.doc</small>	<small>Kap</small> -	<small>Kostnb.</small> K00717	<small>Dok namn</small> Installation description			
	<small>Dok dat</small> -	<small>Current filename</small>	<small>Valid from</small> 2014-02-06	<small>Rev</small> 02	<small>Approved</small> 2014-02-06	<small>Sid</small> 2 (5)

INSTALLATION MANUAL UNIMI-1BASE™



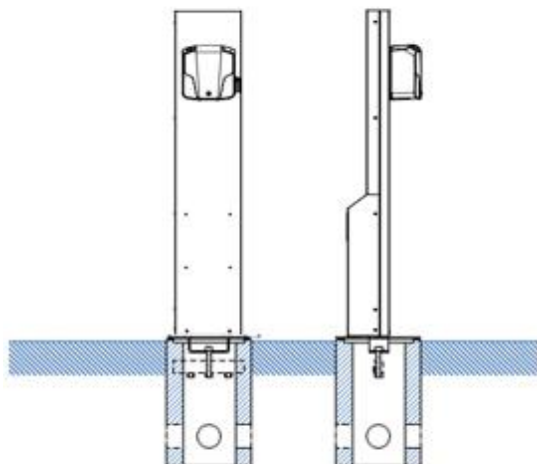
Orientation of the foundation member and metal beam
[view from above]



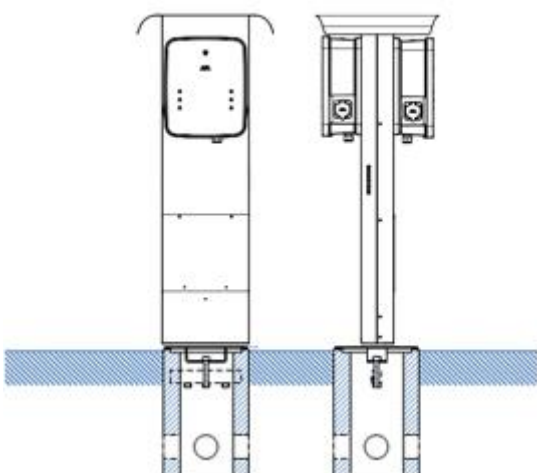
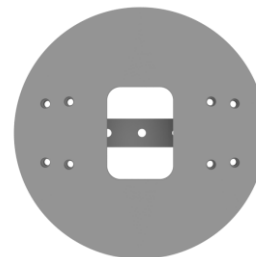
- Lower the foundation into the hole – the beam can be used for lifting. The foundation shall be upright and perpendicular. Rotate the foundation so that the beam is oriented parallel to the curbside/street/parking. The patented design makes it possible to adjust the charging poles orientation using the adapter element.
- Attach VP pipes with cables/thread to the side of the foundation member. Specific protection can be installed according to the figures at the end of this document.
- Mount the adaptor to the foundation member inside beam using the 12 mm bolt and washer accompanying the adaptor (Max 18 Nm)
- Mount the DEFA charging station by fitting the charger bottom plate to match with the Unimi adaptor plate.
- See the different DEFA stations on next page
- For the Unimi adaptor Cat1 plate use the four 12x30 mm screws & washers accompanying the adaptor.
- For the Unimi adaptor Cat2 plate use the six threaded rods of the adaptor with nuts & washers accompanying the adaptor.

Unimi Solutions	Kap -	Kostnb. K00717	Dok namn Installation description				
Mallens filnamn Produktbeskrivning.doc	Dok dat -	Current filename	Valid from 2014-02-06	Rev 02	Approved 2014-02-06	Sid 3 (5)	

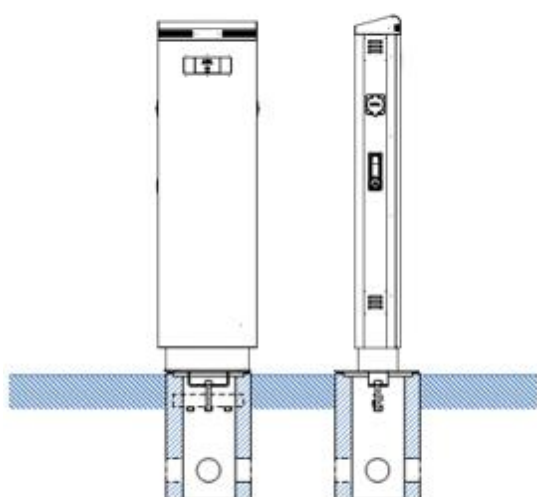
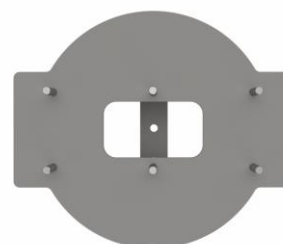
INSTALLATION MANUAL UNIMI-1BASE™



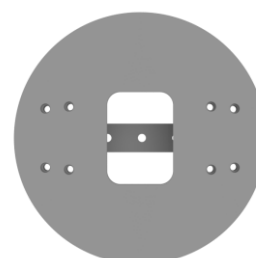
Cat1 adaptor



Cat2 adaptor

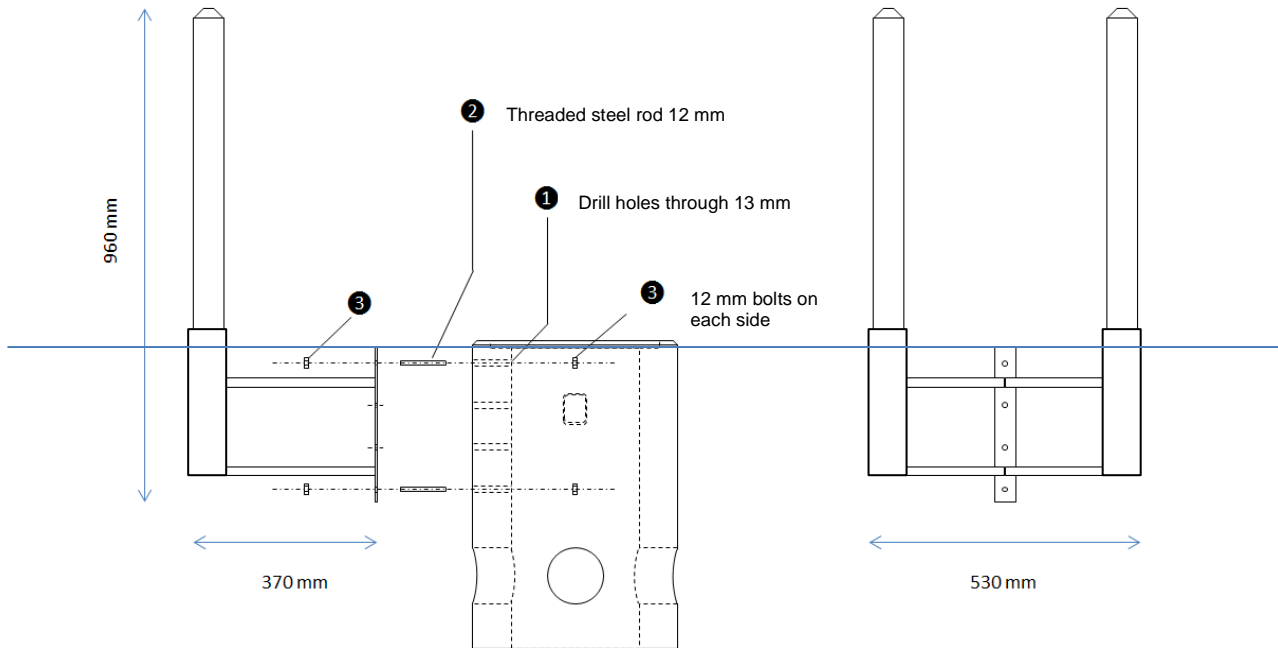


Cat1 adaptor



Unimi Solutions	Kap -	Kostnb. K00717						Dok namn Installation description			
	Mallens filnamn Produktbeskrivning.doc	Dok dat -	Current filename				Valid from 2014-02-06	Rev 02	Approved 2014-02-06	Sid 4 (5)	

INSTALLATION MANUAL UNIMI-1BASE™



Requirements for personal safety

- Pre-cast foundation member must be lifted in place using a vehicle. Use the beam to attach lifting devices.

Unimi Solutions <small>Mallens filnamn Produktbeskrivning.doc</small>	<small>Kap</small> -	<small>Kostnb.</small> K00717	<small>Dok namn</small> Installation description				
	<small>Dok dat</small> -	<small>Current filename</small>	<small>Valid from</small> 2014-02-06	<small>Rev</small> 02	<small>Approved</small> 2014-02-06	<small>Sid</small> 5 (5)	