

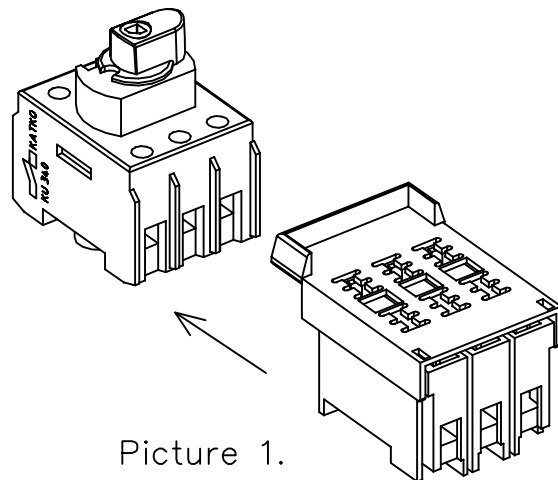
INSTALLATION INSTRUCTIONS FOR KV 10x38 AND KV 10X38CC FUSE HOLDER

1. Connect KV 10x38 or KV 10x38CC to the switch terminals 2, 4, 6 and tighten screws. (Picture 1)

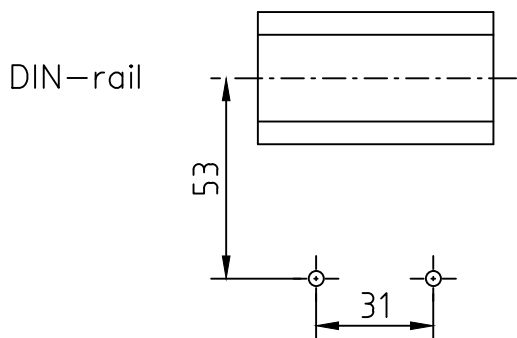
The fused switch disconnecter is now ready assembled.

2. Make sure that the fuse switch combination is firmly attached to the surface (cabinet, etc.) See picture 2.

- The switch on DIN–rail
- Fuse holder with two screws

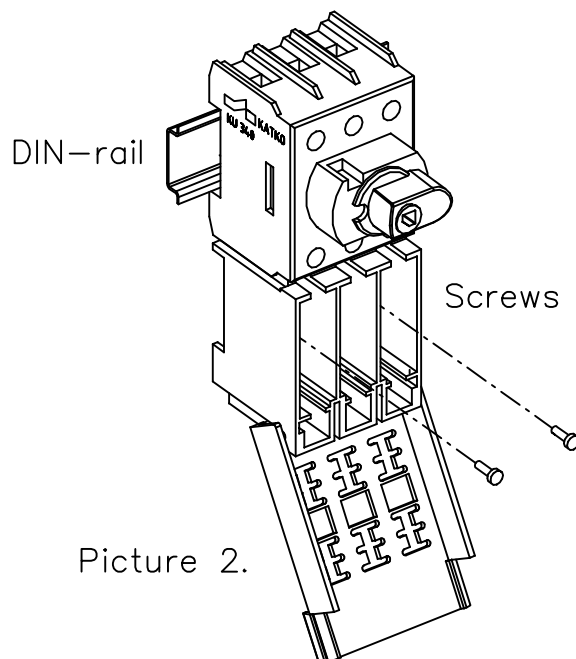


Picture 1.



3. When connecting the conductors please note maximum torque for the terminal screws 1,8 Nm.

4. Mount the switch handle on the cabinet door and cut the shaft to the right length.



Picture 2.

