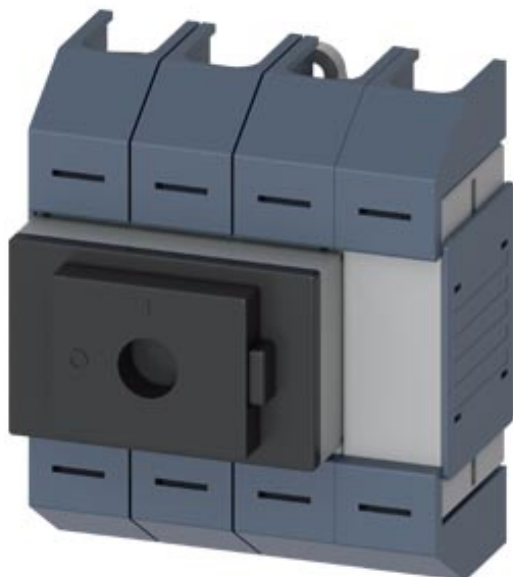


Switch disconnecter 63A, size 02, 4-pole Front operating mechanism
center Basic unit without handle Box terminal



Model	
product brand name	SETRON
product designation	3KD switch disconnecter
design of the product	Switch
display version / for switch position indicator door-coupling rotary operating mechanism	ON-OFF
design of the operating mechanism	Without handle
type of the driving mechanism	Front operating mechanism
type of the driving mechanism / motor drive	No
General technical data	
number of poles	4
type of device	fixed mounting
size of switch disconnecter	02
mechanical service life (switching cycles) / typical	100 000
electrical endurance (switching cycles)	
• at AC-23 A / at 690 V	6 000
• I _{2t} value / of the fuse / at 400 V / maximum permissible	80 000 A ² ·s

<ul style="list-style-type: none"> • I_{2t} value / of the fuse / at 500 V / maximum permissible 	80 000 A ² ·s
<ul style="list-style-type: none"> • I_{2t} value / of the gG fuse / at 690 V / maximum permissible 	75 000 A ² ·s
position / of the switch operating mechanism	central
overvoltage in percent / relative to the operating voltage / at AC / at 400, 500, 690 V / at 50/60 Hz	5 %
overvoltage category	III
degree of pollution	3

Voltage

insulation voltage	
<ul style="list-style-type: none"> • rated value 	750 V
surge voltage resistance / rated value	8 kV

Supply voltage

operating current / at AC / rated value	63 A
operating voltage	
<ul style="list-style-type: none"> • at AC / at 50/60 Hz / rated value 	690 V

Protection class

protection class IP	IP10
protection class IP	
<ul style="list-style-type: none"> • with closed switch / with cover or cable lug cover 	IP10
<ul style="list-style-type: none"> • on the front 	IP40

Dissipation

power loss [W]	
<ul style="list-style-type: none"> • with conventional rated thermal current / per pole 	3.1 W
<ul style="list-style-type: none"> • with conventional rated thermal current / per device 	3.1 W
<ul style="list-style-type: none"> • for rated value of the current / at AC / in hot operating state / per pole 	9.2 W

Current

<ul style="list-style-type: none"> • operating current / at AC-23 A / at 690 V / rated value 	22 A
<ul style="list-style-type: none"> • operating current / at AC-23 A / at 500 V / rated value 	22 A
<ul style="list-style-type: none"> • operating current / at AC-23 A / at 400 V / rated value 	63 A
<ul style="list-style-type: none"> • operating current / at AC-22 A / at 690 V / rated value 	63 A
<ul style="list-style-type: none"> • operating current / at AC-22 A / at 500 V / rated value 	63 A

• operating current / at AC-22 A / at 400 V / rated value	63 A
• operating current / at AC-21 A / at 400 V / rated value	63 A
• operating current / at AC-21 A / at 500 V / rated value	63 A
• operating current / at AC-21 A / at 690 V / rated value	63 A
• operating current / at AC-23 A / at 500 V / at 50/60 Hz / rated value / maximum	22 A
• operating current / at AC-22 A / at 500 V / at 50/60 Hz / rated value / maximum	63 A
• operating current / at AC-22 A / at 400 V / at 50/60 Hz / rated value / maximum	63 A
• operating current / at AC-22 A / at 690 V / at 50/60 Hz / rated value / maximum	63 A
• operating current / at AC-23 A / at 400 V / at 50/60 Hz / rated value / maximum	63 A
• operating current / at AC-23 A / at 690 V / at 50/60 Hz / rated value / maximum	22 A
continuous current	
• rated value	63 A
continuous current / of upstream fuse / at 500 V and 690 V / rated value	100 A
let-through current / of the fuse / at 400 V / maximum permissible	10 000 A
let-through current / of the fuse / at 500 V / maximum permissible	7 000 A
let-through current / of the gG fuse / at 690 V / maximum permissible	7 000 A

Main circuit

operating power	
• at AC-23 A / at 400 V / at 50/60 Hz / rated value	30 kW
• at AC-23 A / at 500 V / rated value	15 kW
• at AC-23 A / at 690 V / at 50/60 Hz / rated value	22 kW
operating current / rated value	63 A

Auxiliary circuit

number of connected NC contacts / for auxiliary contacts	0
number of connected NO contacts / for auxiliary contacts	0
number of connected CO contacts / for auxiliary contacts	0
number of CO contacts / for auxiliary contacts	0

number of NC contacts / for auxiliary contacts	1
number of NO contacts / for auxiliary contacts	1
Suitability	
suitability for use	
• main switch	Yes
• switch disconnecter	Yes
• EMERGENCY OFF switch	Yes
• safety switch	Yes
• maintenance/repair switch	Yes
Product details	
product feature / interlock	No
product component	
• trip indicator	No
• voltage trigger	No
• undervoltage release	No
• undervoltage release with leading contact	No
product extension / auxiliary switch	Yes
product extension / optional	
• motor drive	No
• voltage trigger	No
Short circuit	
short-circuit current making capacity (I _{cm})	
• for switch disconnecter / without fuse link / rated value / minimum	3.55 kA
conditional short-circuit current / with line-side fuse protection	
• at 500 V / by gG fuse / rated value	50 kA
• at 690 V / by gG fuse / rated value	50 kA
Connections	
type of connectable conductor cross-sections / for copper conductor	
• solid	1 x (4 ... 50) mm ²
• finely stranded / with core end processing	1 x (4 ... 35) mm ²
• stranded	1 x (4 ... 50) mm ²
type of electrical connection	
• for main current circuit	box terminal
Mechanical Design	
height	110 mm
width	96 mm
depth	74 mm
mounting type	Screw fixing and standard rail mounting 35 mm

mounting type	
• front mounting with 4-hole attachment	No
• front mounting with central attachment	No
• rail mounting	Yes
mounting position	any
net weight	465 g

Environmental conditions

ambient temperature / during operation	
• minimum	-5 °C
• maximum	40 °C
ambient temperature / during storage	
• minimum	-25 °C
• maximum	55 °C

Certificates

reference code	
• acc. to DIN EN 61346-2	Q
• acc. to DIN EN 81346-2	Q

Further information

Information- and Downloadcenter (Catalogs, Brochures,...)

<http://www.siemens.com/lowvoltage/catalogs>

Industry Mall (Online ordering system)

<https://mall.industry.siemens.com/mall/en/en/Catalog/product?mlfb=3KD0340-2LG20-3>

Service&Support (Manuals, Certificates, Characteristics, FAQs,...)

<https://support.industry.siemens.com/cs/ww/en/ps/3KD0340-2LG20-3>

Image database (product images, 2D dimension drawings, 3D models, device circuit diagrams, ...)

http://www.automation.siemens.com/bilddb/cax_en.aspx?mlfb=3KD0340-2LG20-3

CAX-Online-Generator

<http://www.siemens.com/cax>

Tender specifications

<http://www.siemens.com/specifications>

