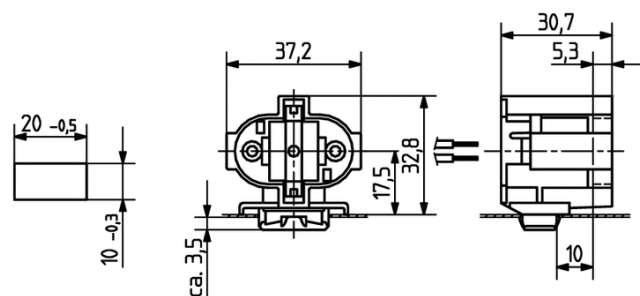
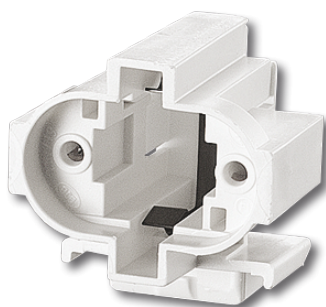


# Lampholder G23

## 26.719.4354.50



T 140



0,5 - 1,0 mm<sup>2</sup>



max. ø 1,8 mm



0,5 - 1,0 mm<sup>2</sup>



0,6 - 1,0

# Lampholder G23

## 26.719.4354.50



### DESCRIPTION

For 2 ignition cables (max.  $\varnothing$  4.2 mm)  
Safe lamp contact by approved Twist and Lock action  
Optimised adapting of lamp design achieved by aluminium sleeve  
Connector and lamp form an optical unit  
The correct function is obtained by inserted cover  
Suitable for light fittings of protection class II in accordance with EN 60598-1 2008.

Product name:	Lampholder G23
Short description:	For lamps TC-S
Mounting method 1:	Snap-in foot 10 x 20 mm for vertical insertion
Material:	Housing: PBT
Wiring:	from below the PCB
Material thickness:	0.6 - 1.0
Color:	white
Weight:	14
Pkg.:	250