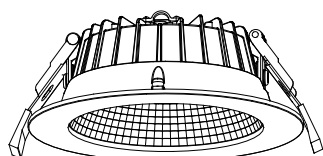


SHIFT

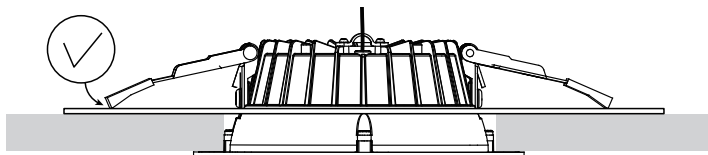
SLC
Scandinavian
Lighting Concept



Ø180 / Ø190 / Ø228

3000K
4000K

Pressure relief plate included

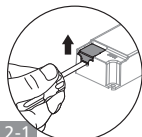


select preferred colour
temperature for product in
CCT change function only

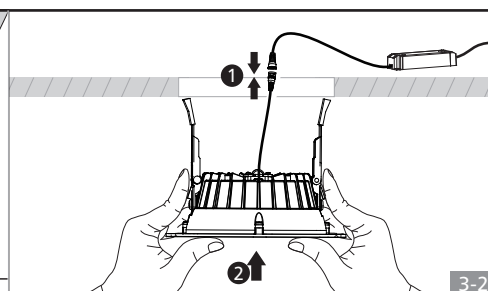
Cutout (refer to cutout table)

Please adjust sensor setting
according to installation
requirements.

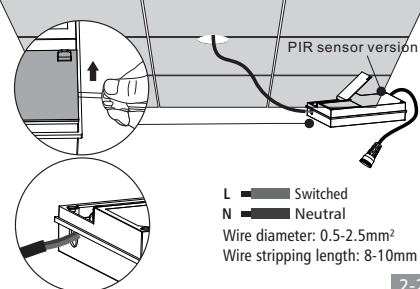
1 2-1



L — Switched
N — Neutral



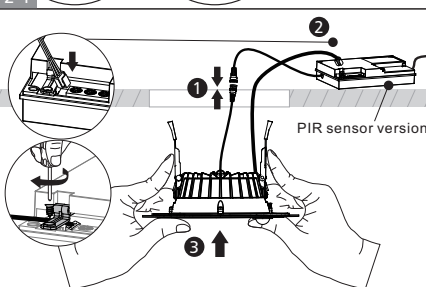
3-2



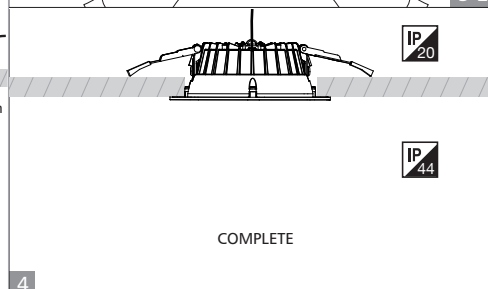
PIR sensor version

L — Switched
N — Neutral
Wire diameter: 0.5-2.5mm²
Wire stripping length: 8-10mm

2-2 3-1



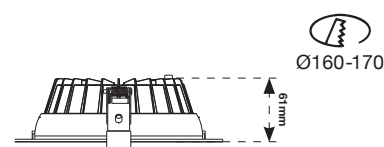
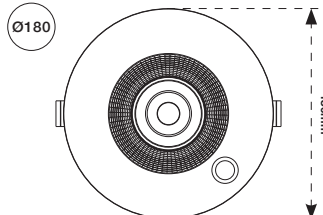
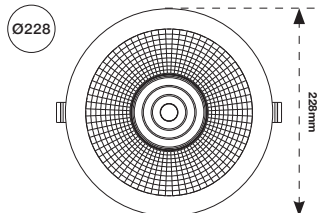
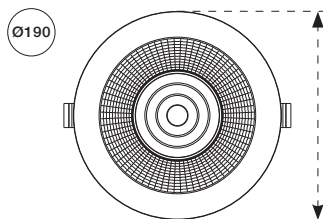
PIR sensor version



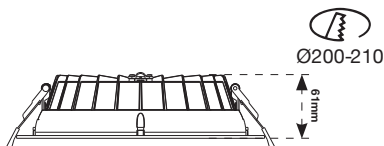
IP20

IP44

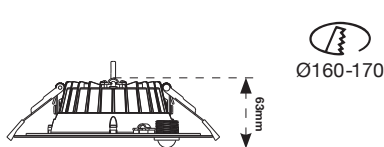
COMPLETE



Ø160-170



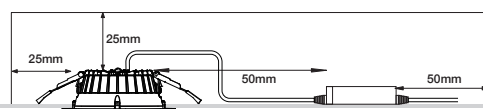
Ø200-210



Ø160-170

Sensor
Surface mounted

Installation Spacing



>10 cm³ Air

NO: Må installeres av godkjent installatør

EN: Only to be installed by an authorized electrician

DE: Nur von einer autorisierten Elektrofachkraft
installieren lassen

FI: Asenna vain valtuutettu sähköasentaja

FR: Seulement pour être installé par un électricien autorisé

IS: Aðeins skal setja upp af viðurkenndum rafvirkni

ES: Solo para ser instalado por un electricista autorizado.

IT: Solo per essere installato da un elettricista autorizzato

NO: Slå av strømmen før montering

EN: Power off before installing

DE: Schalten Sie vor der Installation die Stromversorgung aus

FI: Katkaise virta ennen asennusta

FR: Couper le courant avant d'installer

IS: Slökktu á orku áður en þú setur upp

ES: Apague la alimentación antes de instalar

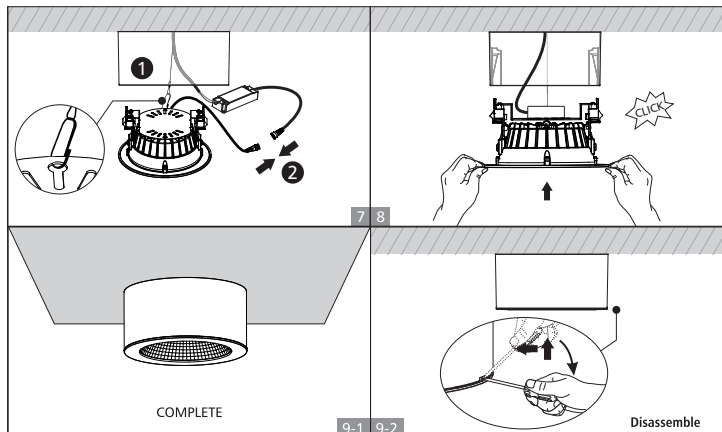
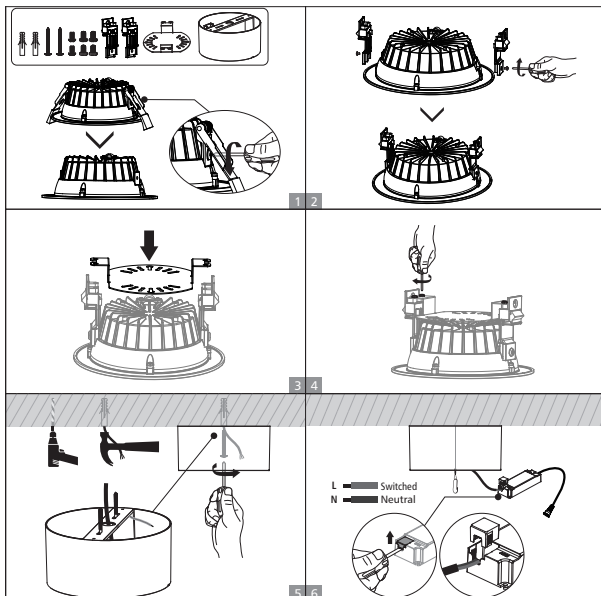
IT: Spegner l'alimentazione prima di installare



SHIFT

SLC
Scandinavian
Lighting Concept

Surface mounted

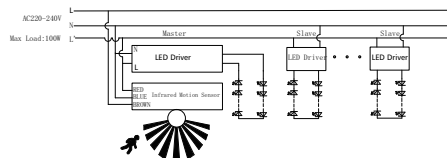


PIR Sensor

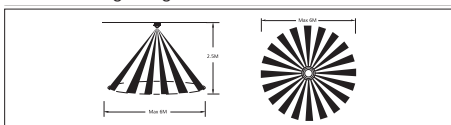
Sensor datasheet

Operating voltage	AC220-240V
Power consumption	1W max
Microwave frequency	-
Transmission power	-
Detection angle	90°
Detection Area	2-3M Knob adjustable
Hold time	10S-7min Knob adjustable
Daylight sensor	10-2000lux Knob adjustable
Stand-by DIM Level	-
Stand-by Period	-
Dimming Range	-
Microwave ON/OFF function	-
Installation Height	Recessed recommended height is 2.5m
Minimum mounting distance	recommended mounting distance should be more than 2m
Operating temperature(°C)	-20°C~40°C

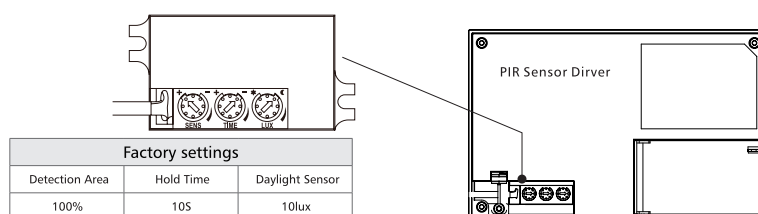
Wiring diagram



Detection range diagram



Settings



- Detection area:**
The detection area can be adjusted by the knob, clockwise adjustment increases the sensitivity, counterclockwise adjustment reduces the sensitivity. the maximum detection distance is 6 meters, the minimum detection distance is 2 meters.
Notice 1:The distance test is carried out under 25°C, 1.8 meters wall mounting installation height. The test result is based on the movement along the tangential direction of the sensor, and the detect distance can be adjusted by the dial switch.
Notice 2:Infrared sensor will be affected by temperature. Too high or too low temperature may affect the detect distance or even cause failure to sensor.
- Hold time:**
The hold time can be adjusted by the knob. Clockwise adjustment increases the hold time, counterclockwise adjustment reduces the hold time, the maximum hold time is 7min, and the minimum hold time is 10S.
Notice 1:The hold time counting should be started after the sensor is powered on and initialized.
- Daylight sensor:**
The light threshold can be selected through the Knob. Clockwise adjustment increases the light threshold, counterclockwise adjustment reduces the light threshold, the maximum light threshold is 2000lux, and the minimum light threshold is 10lux.
Notice 1:The light threshold may cause a large deviation in different lamps.