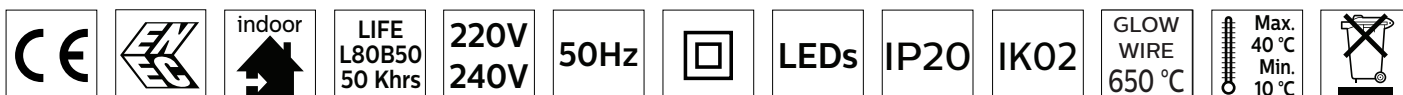
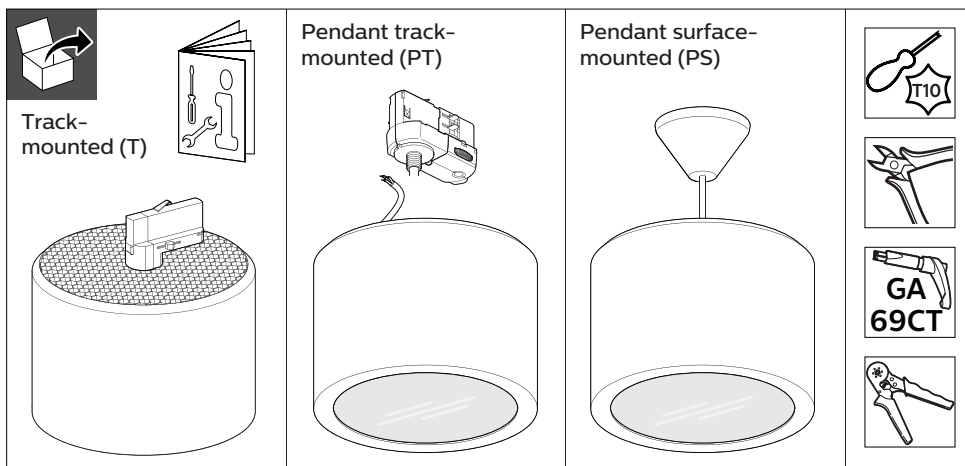


PHILIPS

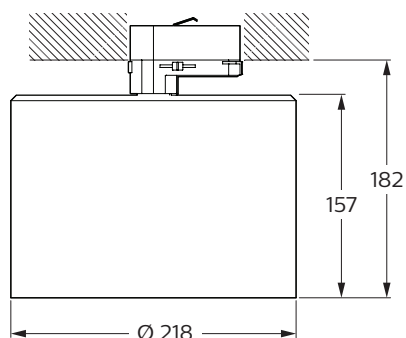
TC KT Series



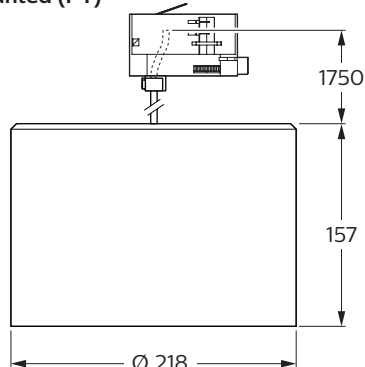
Mounting		Lumen (Lm)	CCT (K)	Power (W)	Driver	UGR	Through-wiring	kg
TC KT X LED11S/XXX	Track-mounted (T)						N/A	
	Pendant Track-mounted (PT)	1100	830/840 930/940	11 11.5	PSU/PSD	19/22	N/A	
	Pendant Surface-mounted (PS)						Yes	
TC KT X LED20S/XXX	Track-mounted (T)						N/A	1.3
	Pendant Track-mounted (PT)	2000	830/840 930/940	19 25	PSU/PSD	19/22	N/A	
	Pendant Surface-mounted (PS)						Yes	
TC KT X LED30S/XXX	Track-mounted (T)	3000	830/840				N/A	
	Pendant Track-mounted (PT)	2500	830/840 930/940	28.5	PSU/PSD	22	N/A	
	Pendant Surface-mounted (PS)						Yes	

Track-mounted (T)

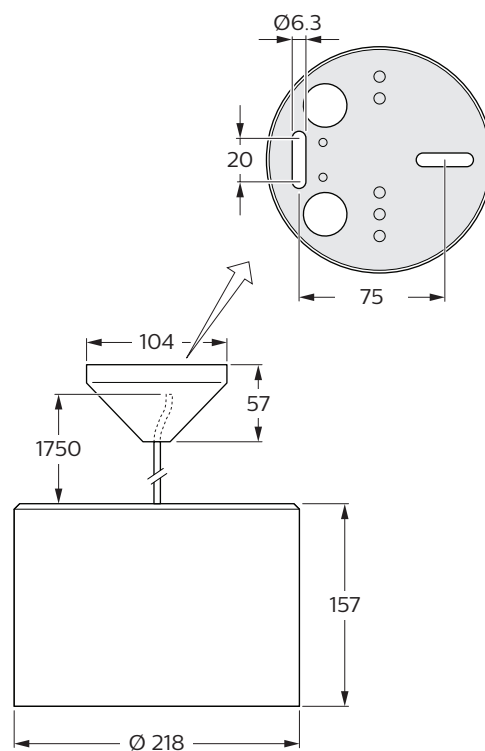
Dimensions in mm



Pendant track-mounted (PT)



Pendant surface-mounted (PS)

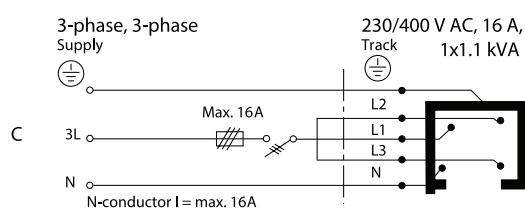
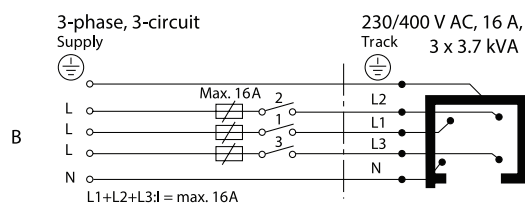
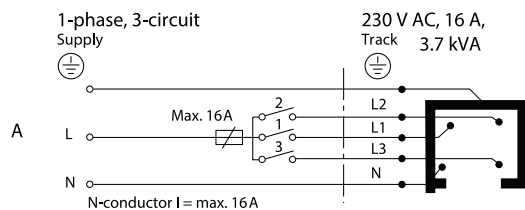




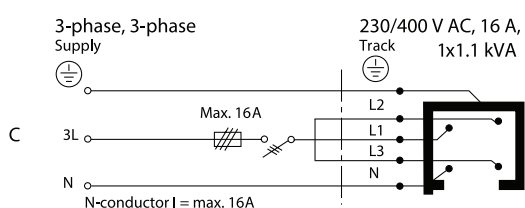
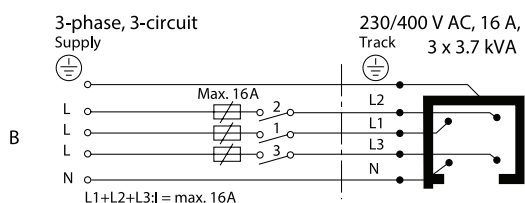
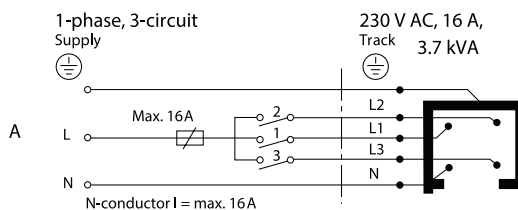
Track-mounted (T)

GLOBAL Trac connecting diagrams

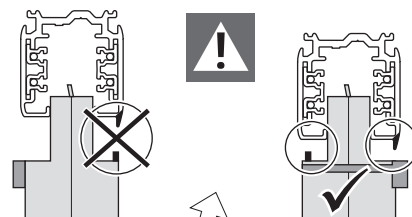
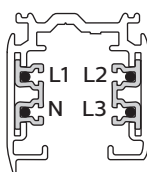
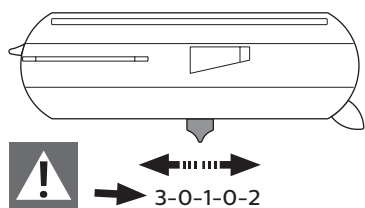
GLOBAL Trac Pro none dimming



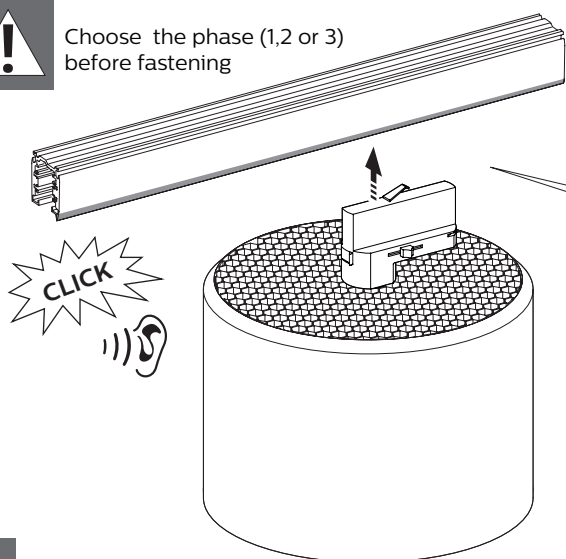
GLOBAL Trac Pulse control DALI dimming



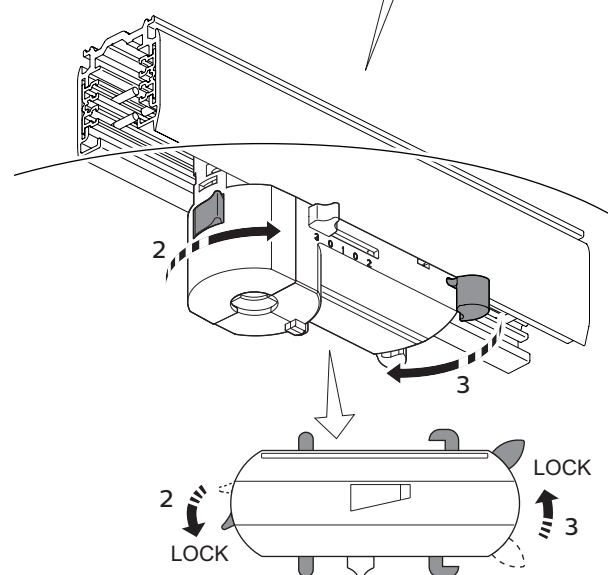
1



Choose the phase (1,2 or 3)
before fastening



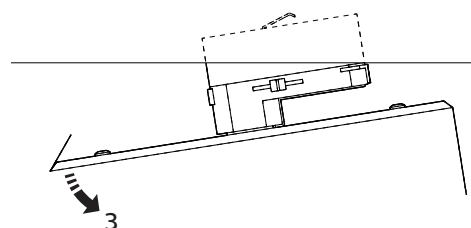
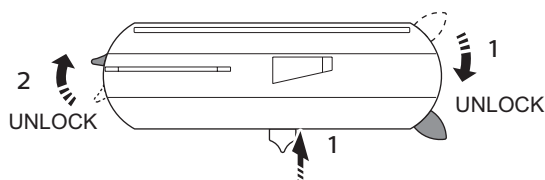
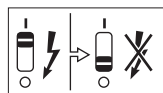
2



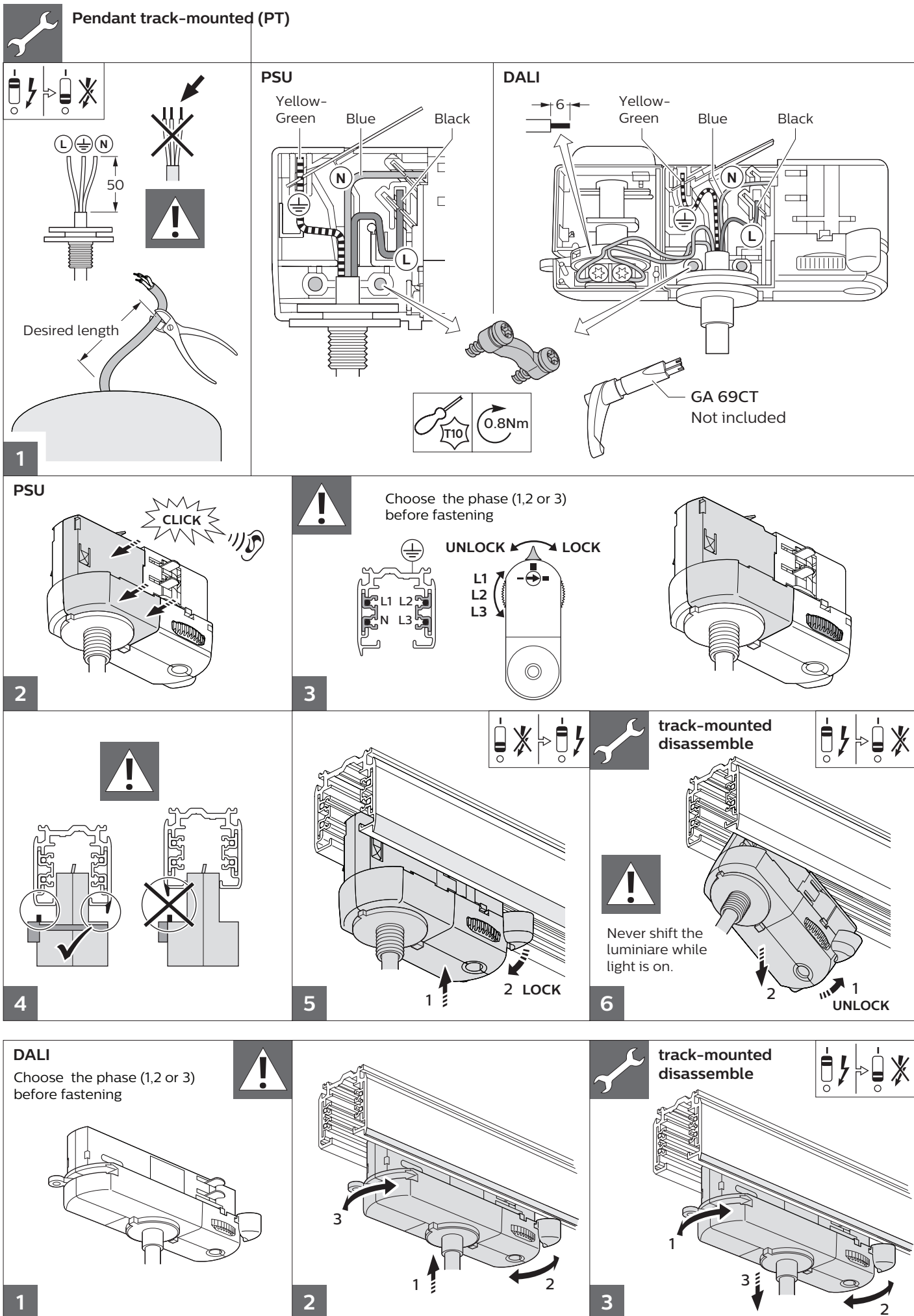
Unlock



Never shift the luminaire
while light is on.

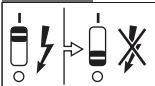


3

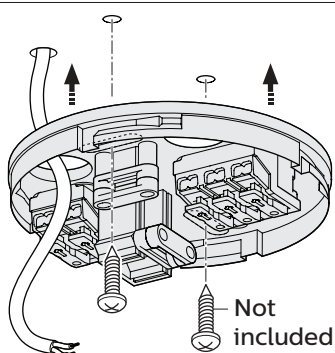




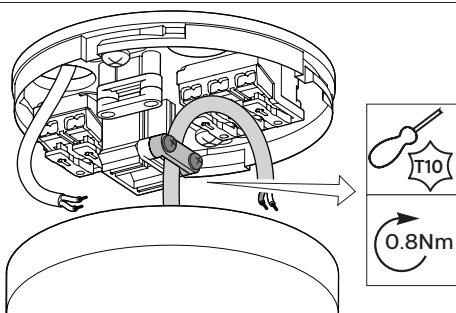
Pendant Surface-mounted (PS)



1



2



Not included

PSU

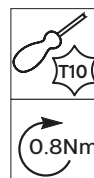
Yellow-Green
Blue
Brown

3x (Included)

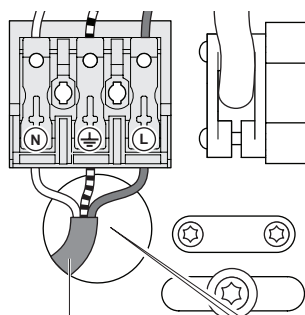
5x (Included)

Yellow-Green
Blue
Brown

DALI

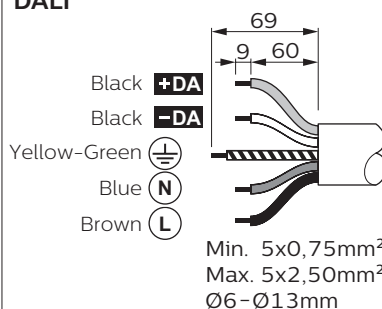


PSU



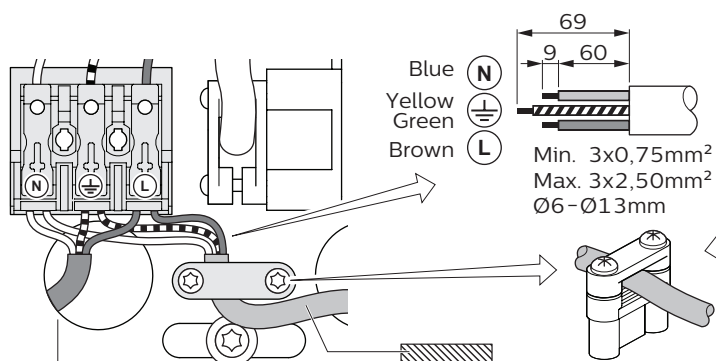
Only for 'fixed installation cable'.
Flexible installation cables need
to go through strain relief.

DALI

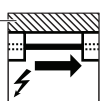


Only for 'fixed installation cable'.
Flexible installation cables need
to go through strain relief.

4a

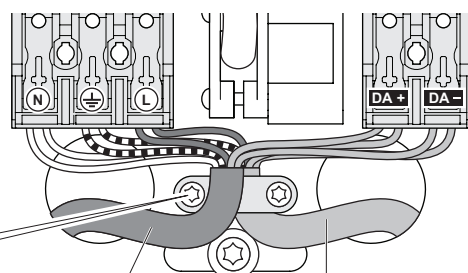


Only for 'fixed installation cable'.
Flexible installation cables need
to go through strain relief.



through-wiring possible.
Outgoing cable needs to go through
strain-relief when it is not fixed to
the installation.

4b



Outgoing cable needs to go
through strain-relief when it
is not fixed to the installation.

Only for 'fixed installation cable'.
Flexible installation cables need
to go through strain relief.



- The luminaire shall be installed by a qualified electrician and wired in accordance with the latest IEE electrical regulations or the national requirements.
- This luminaire is not suitable for use as emergency lighting.
- The light source of this luminaire is not replaceable; when the light source reaches its end of life the whole luminaire shall be replaced.
- Clean with dry cloth.



ATTENTION
OBSERVE PRECAUTIONS
FOR HANDLING
ELECTROSTATIC
SENSITIVE
DEVICES