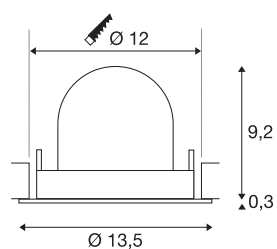




NUMINOS® GIMBLE M

white / chrome recessed ceiling light, 4000K 40°

The NUMINOS light system from SLV combines technology, design and functionality like no other. With a variety of downlights and spotlights, you provide a thousand lighting design options. Like with the NUMINOS® GIMBLE M recessed ceiling light, which impresses with its high-quality workmanship and light. Ideal for unobtrusive, modern and space-saving lighting that draws the focus to objects or the room. Installation is then done in no time at all. When do you choose NUMINOS ® from SLV?



TECHNICAL DATA

| | |
|-----------------------------------|-------------------------|
| Item no. | 1005971 |
| Number of different light outlets | 1 |
| Rotating or tilting | rotary bar and tiltable |
| Assembly | Recessed |
| Assembly details | Ceiling |
| Secondary power / voltage | 500 mA |
| Safety class | III |
| Wattage | 17.5 W |
| Lumen | 1660 lm |
| Colour temperature | 4000 Kelvin |
| Beam angle | 40 ° |
| Color | white |
| CRI | 90 |
| UGR ≤ | 22 |
| LXXBXX data | L80B50 |
| Risk Group | 1 |
| Height | 9.5 cm |
| Diameter | 13.5 cm |
| Net weight | 0.45 kg |
| Gross weight | 0.55 kg |
| Shape of cut-out | round |
| Installation depth | 9.5 cm |

Light Source

| | |
|--------|---|
| 791825 |  |
|--------|---|

Accessories

| | |
|---------|---|
| 1004054 | LED driver , 20W 500mA PHASE |
| 1004064 | LED driver , 21-29.5W 500/600/700mA |
| 1004069 | LED driver , 29W 500mA |
| 1004790 | NUMINOS® M , diffuser Ellipse |
| 1004791 | NUMINOS® M , diffuser Prisma |
| 1004792 | NUMINOS® M , diffuser Frosted |
| 1004793 | NUMINOS® M , diffuser Wabe |
| 1006143 | Numinos® M Reducing ring , round 240/120mm black |
| 1006144 | Numinos® M Reducing ring , round 240/120mm white |
| 1006145 | Numinos® M Reducing ring , square 240/120mm black |
| 1006146 | Numinos® M Reducing ring , square 240/120mm white |

| | |
|-----------------------|-------|
| Installation diameter | 12 cm |
| BIG WHITE Page | 53 |