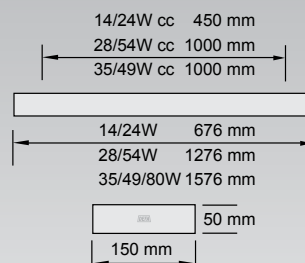




Design: Work AS



Qbic Premium – interior fitting in an attractive design with high quality light optics

Description

Ceiling mounted interior fitting for 1 or 2 tubes. Body in steel, end caps in ABS plastics. High-efficiency double parabolic aluminium reflector. The fitting is powder painted in structure paint, white (WT) RAL 9016 or Alu-grey (ALU) RAL 9006.

Application areas

Office, meeting room, school, shop, reception.

Mounting

Fixing direct in the ceiling or on a mounting rail.

Installation

Two cable entries in the center on the top of the fitting, knock out in each end cap. 5-pol push-in terminal block in center of the fitting, max 2,5 m².

Control gear

Electronic control gear HF.

Light source

Qbic PR is supplied without lightsources.

Control systems

Harmony PR is supplied with a complete programme of different control systems.

DALI

Digital light control, can even be control by puls switch.

SW

On-Off cord switch.

SWD

Cord switch dimming.

PIR OnOff

On-Of sensor.

PIR MinMax

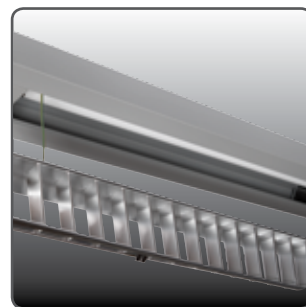
Sensor switching between full effect and a min-level of 10 %.

PIR MinMaxOff

Sensor switching between full effect and a min-level of 10 %. Turns of if no detection.

Others

Qbic is also available in a suspended version, see Qbic PR - ID.

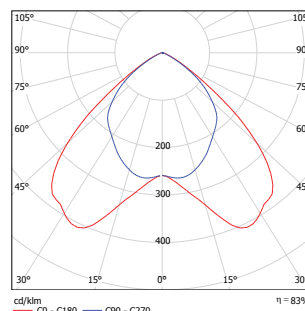


Reflector appendant with service and change of light source.



Easy access to the sensor for adjustment.

Number	Type	Colour	Light source	Control	Weight (kg)
114532	Qbic PR	White	T5 1x28/54W G5		3,7
114533	Qbic PR	White	T5 1x28/54W G5	DALI	3,7
114536	Qbic PR	White	T5 1x35/49/80W G5		4,3
114537	Qbic PR	White	T5 1x35/49/80W G5	DALI	4,3
114530	Qbic PR	White	T5 2x14/24W G5		2,3
114531	Qbic PR	White	T5 2x14/24W G5	DALI	2,3
114534	Qbic PR	White	T5 2x28/54W G5		3,7
114535	Qbic PR	White	T5 2x28/54W G5	DALI	3,7
114538	Qbic PR	White	T5 2x35/49W G5		4,3
114539	Qbic PR	White	T5 2x35/49W G5	DALI	4,3
114540	Qbic PR PIR	White	T5 2x28/54W G5	OnOff	4,3



Qbic Premium 1x28W

Reservation for misprinting or product changes.