

HILO LUMINAIRE INSTRUCTIONS Issue 01 on 24th January 2022

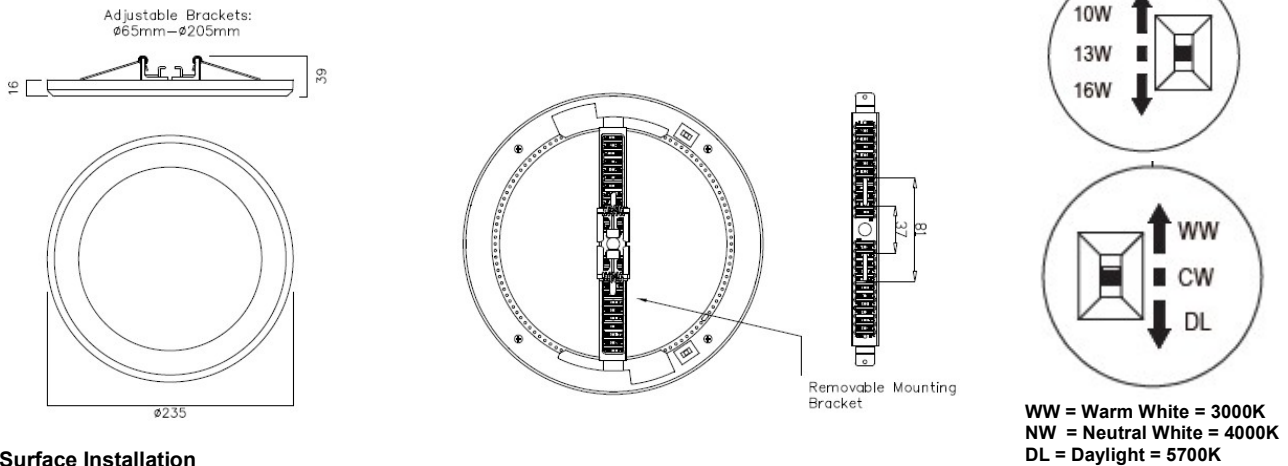
THANK YOU for buying this product. To help ensure it gives complete satisfaction please install it according to these instructions and then pass the instructions to the appropriate person for retention and future reference.

SAFETY This is a mains powered product. It is designed to be installed by suitably qualified personnel only and in accordance with the applicable building and electrical regulations. Before installation or maintenance the electrical supply to the product must be isolated.



INSTALLATION SUPPORT If installation advice or accessories are required please contact us at the above address. We will do our best to help. When reporting a suspected fault or seeking installation support the problem is likely to be resolved most quickly if you have full product details to-hand, as well as details of when and where it was purchased.

INSTALLATION



Surface Installation

- Slide out the springs and remove them from the fixing bracket Fig 1.
 - Chose a suitable mounting surface ensuring it can retain the weight of the fitting and secure the fixing bracket in place Fig 2.
 - Set the required wattage and the required CCT using the slide switches Fig 3.
 - Route the mains supply cable from the base & terminate ensuring correct polarity is observed Fig 4.
- Note! This is a Class II luminaire, so no earth is required.**
- Align the fixing bracket to the slots in the base, rotate clockwise to secure in place Fig 5.
 - Reconnect power supply & check for correct operation.

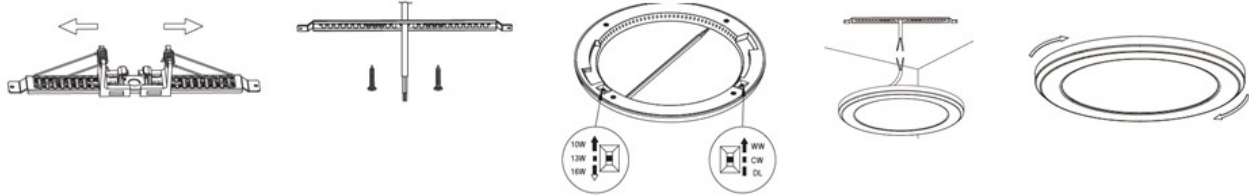


Fig 1.

Fig 2.

Fig3.

Fig4.

Fig 5.

Recessed Installation

- Provide a suitable cutout for the fitting Fig 6.
 - Locate the bracket onto the base of the fitting and rotate clockwise to lock into place Fig 7.
 - Set the required wattage and CCT using the slider switches Fig 8.
 - Route the mains supply cable from the base & terminate ensuring correct polarity is observed Fig 9.
- Note! This is a Class II luminaire, so no earth is required.**
- Adjust the springs to match the cutout size and hold back the springs Fig 10. to recess the fitting into place Fig 11.
 - Reconnect power supply & check for correct operation.

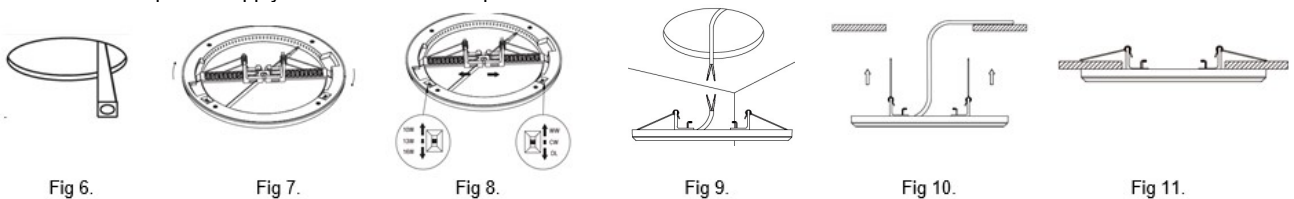


Fig 6.

Fig 7.

Fig 8.

Fig 9.

Fig 10.

Fig 11.

Note! Luminaires fitted with electronic drivers are exempt from insulation resistance tests as this may cause damage to the components.