
030551.5L01.311
INTO R100 LED 14W 18° 1200lm 3000K IP20 white

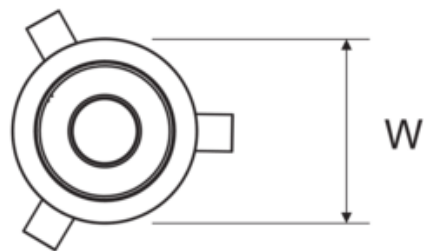
Decorative downlight luminaire, adapted for tool-free assembly, for suspended ceilings, for LED light sources. The luminaire in round version with different angles of light distribution.

TECHNICAL DATA	Mounting: in the ceiling, with mounting brackets (included) Body: aluminum Colour: white
ELECTRICAL DATA	Power: 220-240V 50/60Hz Includes light source: yes Output current [mA]: 300 Type of equipment: ED Light source / lamp: LED
OPTICAL DATA	Light distribution: rotationally-symmetric Way of lighting: direct Reflector: polished faceted CRI/Ra: ≥80 Beam angle: 18° Lumen luminaire [lm]: 1200 Colour temperature [K]: 3000
GENERAL DATA	Lifetime (L80B10): 60 000 h Warranty: 5 years Application: public utility facilities, delicatessen, supermarkets, shopping centers, offices, car showrooms, pathways, halls, classrooms, corridors, flats

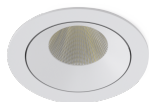


Code	Type of equipment	Colour	Beam angle	Luminaire power [W]	Lumen luminaire [lm]	Efficacy [lm/W]	Colour temperature [K]	CRI/Ra
030551.5L01.311	ED	white	18°	14	1200	86	3000	≥80

Code	Dimensions [mm] W H	Mounting dimensions [mm] ØS	Pallet quantity	Quantity in package	Net weight [kg]
030551.5L01.311	100 68	90	360	1	0,5



ADDITIONAL PHOTOS



Luminous flux tolerance +/- 10%.

Power tolerance +/- 5%.

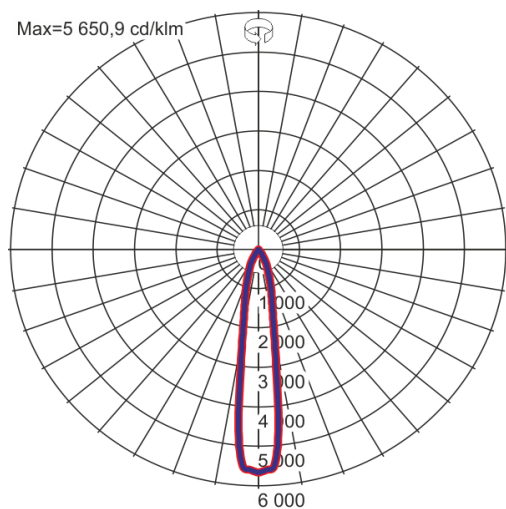
Up-to-date product info and General Warranty Terms available on our website www.luglightfactory.com

Detailed information on luminous fluxes and powers for individual indexes are indicated on the product data sheet.

The parameters in the data sheet are given for Ta=25°C.

Date of issue: 22-8-2019

The LUG Company reserves right to introduce any construction changes and improvements into the lighting luminaires

LIGHT BEAM CURVES**WAY OF LIGHTING**

Luminous flux tolerance +/- 10%.

Power tolerance +/- 5%.

Up-to-date product info and General Warranty Terms available on our website www.luglightfactory.com

Detailed information on luminous fluxes and powers for individual indexes are indicated on the product data sheet.

The parameters in the data sheet are given for Ta=25°C.

Date of issue: 22-8-2019

The LUG Company reserves right to introduce any construction changes and improvements into the lighting luminaires