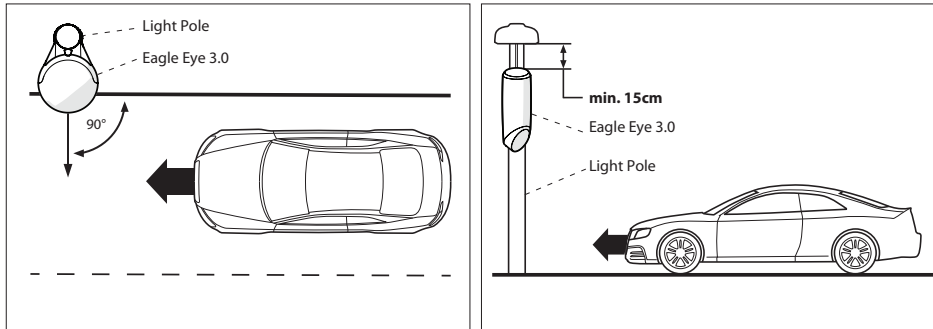


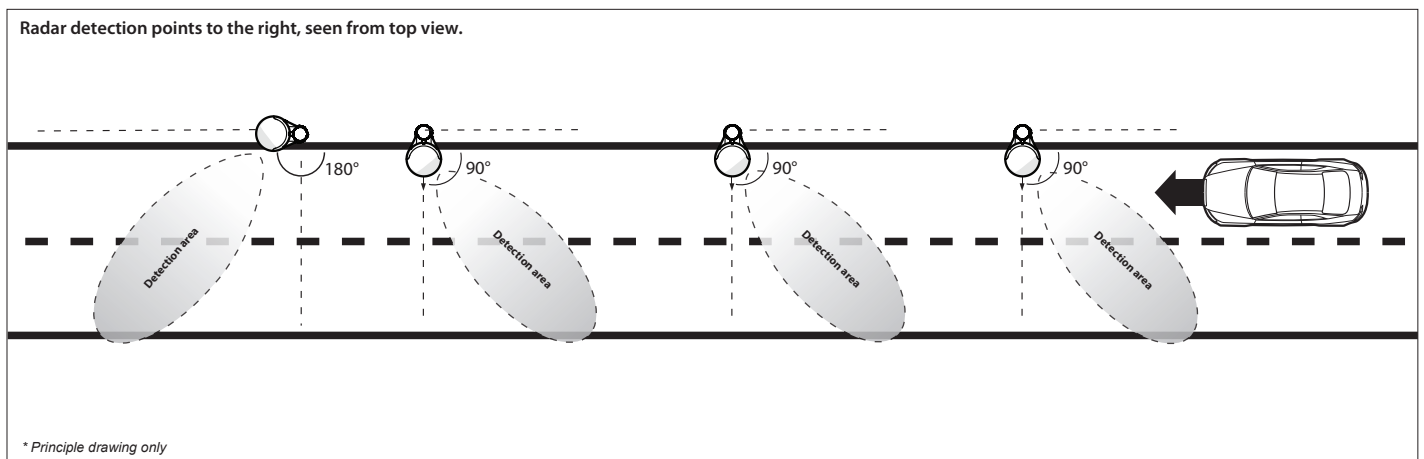


Installation Guide **Eagle Eye 3.0**

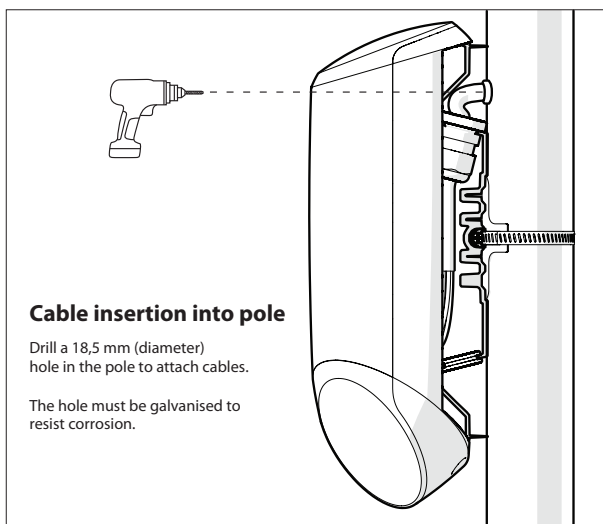
1. POSITION OF EAGLE EYE 3.0



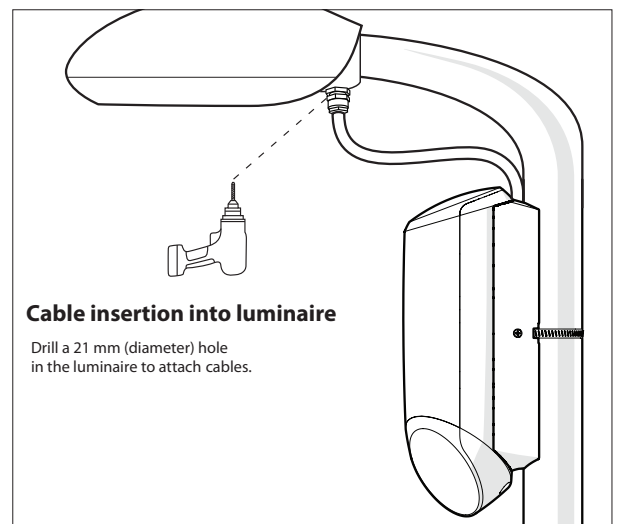
2. DETECTION AREA



3. CABLE INSTALLATION



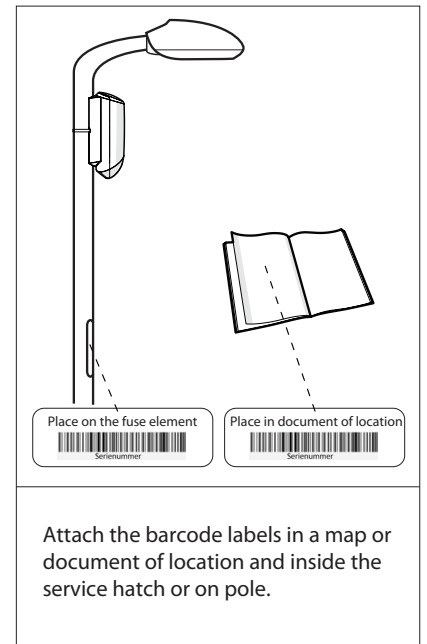
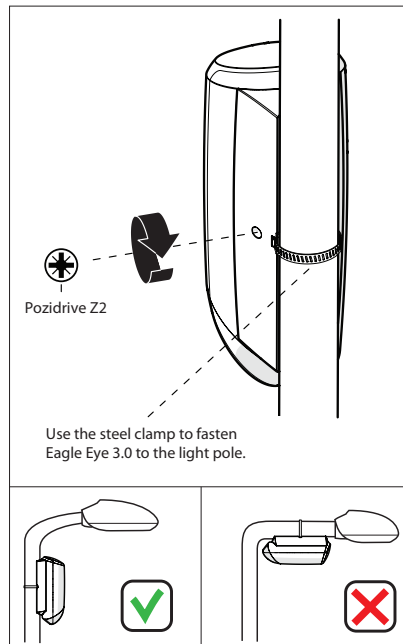
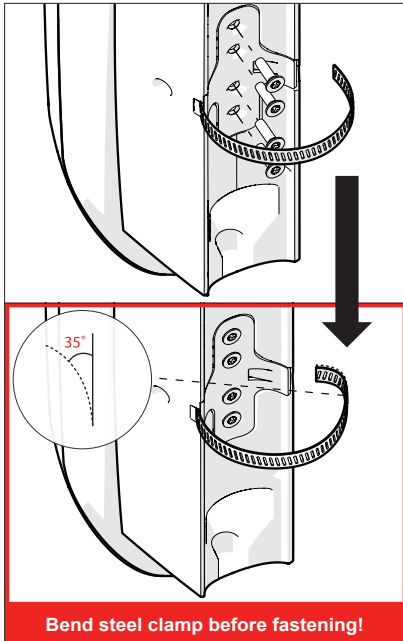
Or :



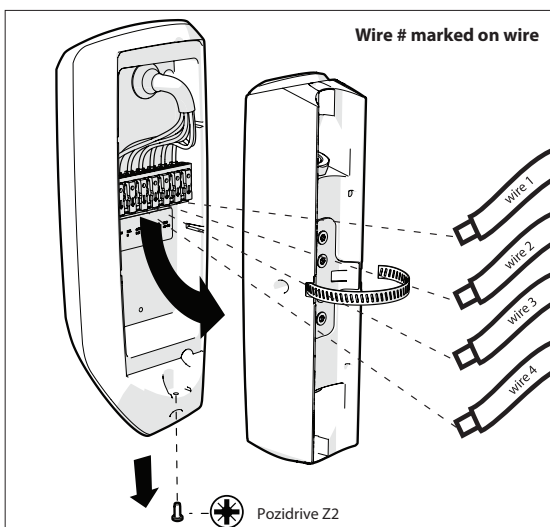


Installation Guide **Eagle Eye 3.0**

4. MOUNTING EAGLE EYE 3.0



5. WIRE CONNECTIONS



Wire numbering/color							
Controls	Step	AC-EM	AC-L1	AC-N	-DALI -(1-10V)	+DALI	+(1-10V)
4 - wire cable	Step		1/BN	2/BU			
	DALI		1/BN	2/BU	3/GY	4/BK	
	1-10V		1/BN	2/BU	3/GY		4/BK

For technical support & installation related questions, contact us at:

support@comlight.no