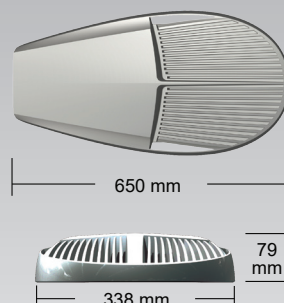
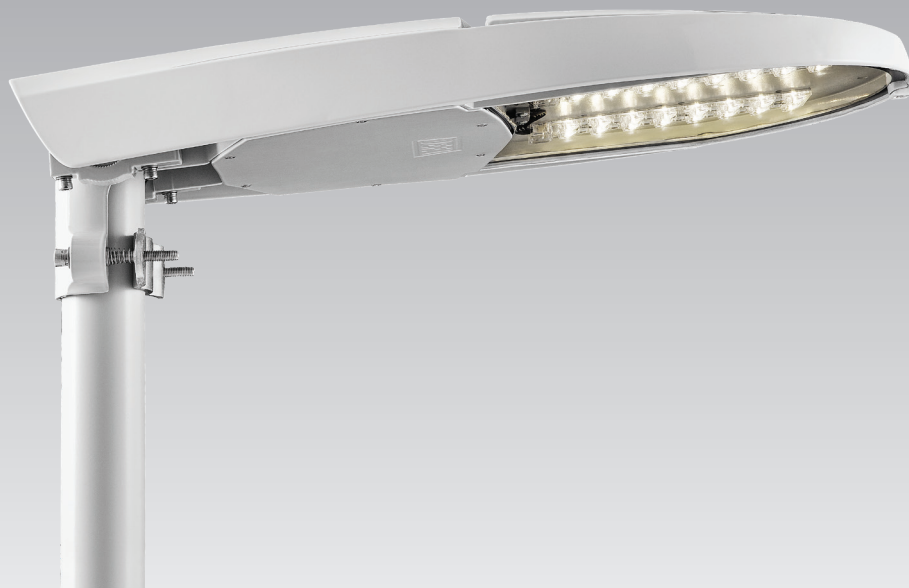


Elite large - Asymmetrical



Elite - clean lines - functional expression - Nordic design

Description

Body in pressure die-cast aluminium with impact 5 mm flat glass. Powder painted ingrey - RAL 7035, corrosion class C5. The fitting is equipped with 3 LED modules. Elite is design to give maximum heat transmission and long lifetime. CLO - Constant Light Output as standard. The fitting gratify EN 62471 requirement for photo biological safety. 6kV Surge Protection Device is integrated.

Application areas

The plain design of the fitting makes Elite suitable in various application areas. By use of the wall fixing Elite is ideal for use as wall light around buildings and plants. Due to the asymmetrical floodlight optics the fitting is primary designed for intensive lighting of pedestrian crossing and lighting of parking lots and other outdoor areas. Ideal for use in combination with Elite Large and Elite Small in areas with the need for a mix of street lighting and flood lighting, giving the possibility to maintain a familiar design.

Moutning

As standard the fitting is supplied with 2x2,5mm² cable, 12m length. Other cable lengths or Wieland quick connector, available on request. The fixing bracket in die-cast aluminium, is reversible for mounting on arm or pole top Ø42-76mm, can be tilted in steps of 5°.

On request

- NR - automatic Night Reduction
- 10kV Surge Protection Device
- Alternative effects and luminous flux
- Other cable lengths or Wieland quick connector
- Can be delivered with all open light control systems

Colour index: Ra >70
Lifetime: 100 000h L95B10
Weight: 11,3 kg
Vind surface: 0,043 m²

STREET - TUNNEL

Number	.Type
121096	Elite Large Asym 3M-17400lm 142W 4000K

Reservation for misprinting or product changes.