

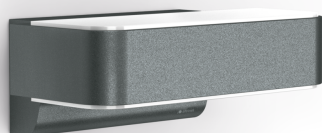
Sensor-switched LED outdoor light

# L 810 SC

Anthracite

EAN 4007841 065706

Article number 065706



Up-/Downlight

LED

30 Jahre (Ø 4,5 Std / Tag)

3000 K

3000K warmweiß



Intelligenter  
Hochfrequenz-  
Sensor 160°



1 - 5 m



IP44



2 - 2000 Lux



Lichtquelle nicht  
austauschbar



Betriebsgerät nicht  
austauschbar



10 Sek - 60 Min

## Function description

The most modern outdoor light in the world. Designer sensor-switched outdoor light L 810 SC with invisible high-frequency sensor, ideal for building entrances and fronts of buildings, 9,8 W STEINEL LED lighting system, 679 lm, 160° coverage angle, reach from 1 - 5 m, for stylish up and downlighting, includes soft light start and optional manual override for 4 hours. Wirelessly interconnectable by Bluetooth and adjustable and controllable via free app.

## Technical specifications

Dimensions (L x W x H)	146 x 230 x 91 mm
With lamp	Yes, STEINEL LED system
Manufacturer's Warranty	3 years
Settings via	App, Connect Bluetooth Mesh
With remote control	No
Version	Anthracite
PU1, EAN	4007841065706
Application, place	Outdoors
Application, room	garden, front door, courtyard & driveway, all round the building, terrace / balcony
Colour	Anthracite
includes sheet of self-adhesive numbers	No
Installation site	wall
Impact resistance	IK03
IP-rating	IP44
Protection class	II

Photo-cell controller	Yes
Transmitter range	30 m
Transmitter power	< 1 mW
Luminous flux total product	679 lm
Measured luminous flux (360°)	679 lm
Total product efficiency	69 lm/W
Colour temperature	3000 K
Lamp	LED cannot be replaced
Service life LED L70B50 (25°)	> 60000 h
Base	without
LED cooling system	Active and Passive Thermo Control
Soft light start	Yes
Continuous light	selectable
Functions	Motions sensor
Twilight setting	2 – 2000 lx
Time setting	5 s – 60 Min.
Basic light level function	Yes

<https://www.steinel.de>

Subject to technical modifications

05.2024 Page 1 from 3

# L 810 SC

Anthracite

EAN 4007841 065706

Article number 065706



## Technical specifications

Ambient temperature	-20 – 40 °C
Housing material	Aluminium
Cover material	Plastic, opal
Mains power supply	220 – 240 V / 50 – 60 Hz
Output	9,8 W
Mounting height max.	2,50 m
Slave modeselectable	Yes
Sneak-by guard	No
Capability of masking out individual segments	No
Electronic scalability	Yes
Mechanical scalability	No
Reach, detail	Detection zone adjustable on 2 axes
Reach, radial	r = 5 m (35 m <sup>2</sup> )
Reach, tangential	r = 5 m (35 m <sup>2</sup> )

Basic light level function time	OFF, Brightness-controlled, 10 sec – 60 min
Main light adjustable	0 - 100 %
Interconnection	Yes
Type of interconnection	Master/master, Master/slave
Basic light level function in per cent	10 – 100 %
Basic light level function percentage, from	10 %
Basic light level function percentage, up to	100 %
Interconnection via	Bluetooth Mesh Connect
Colour Rendering Index CRI	= 82
Optimum mounting height	2 m
Detection angle	160 °

Sensor-switched LED outdoor light

# L 810 SC

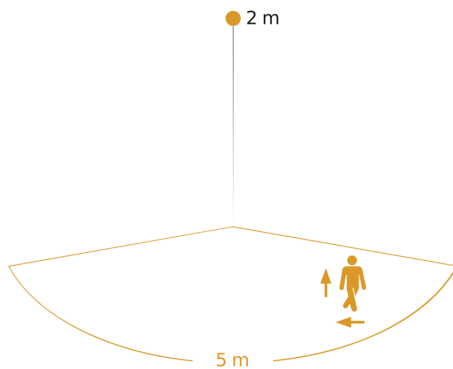
Anthracite

EAN 4007841 065706

Article number 065706



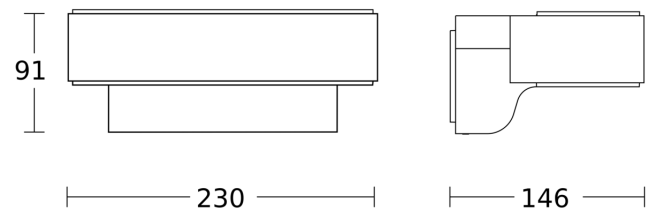
## Detection Zone



Possible mounting height: 1,80 m – 2,50 m

Orange: radial and tangential

## Dimension Drawing



## Circuit diagram Bluetooth

