

# INSTALLATION AND SERVICE MANUAL

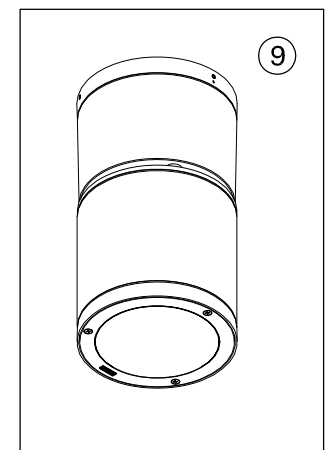
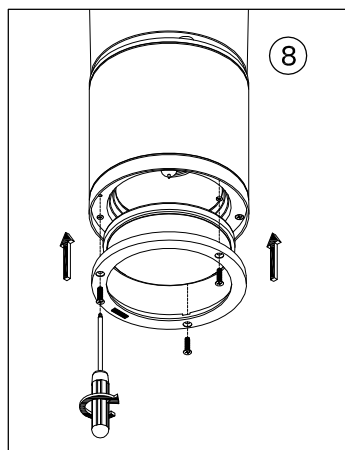
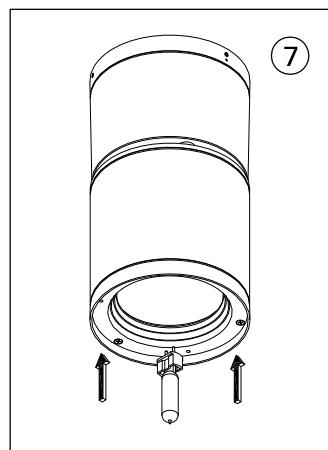
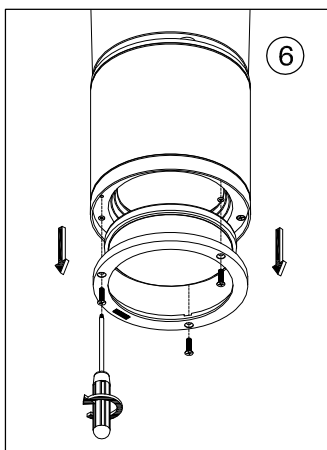
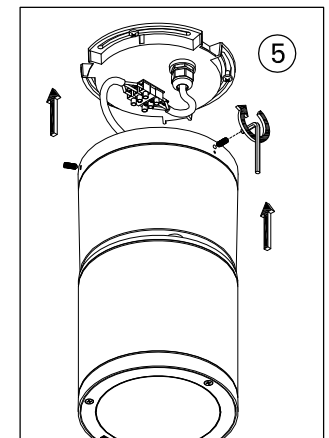
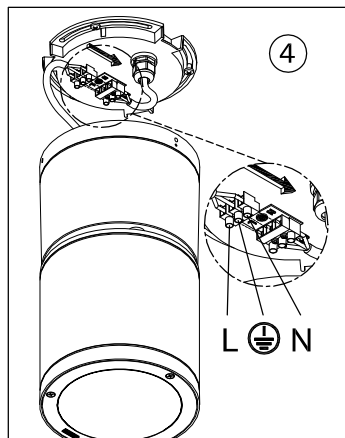
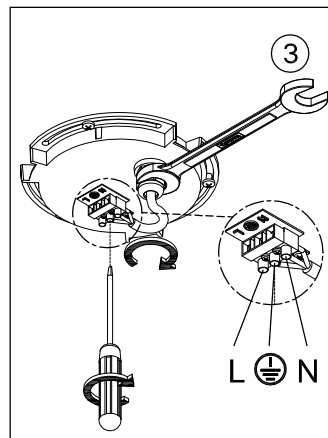
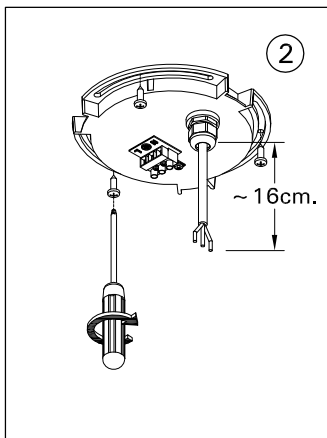
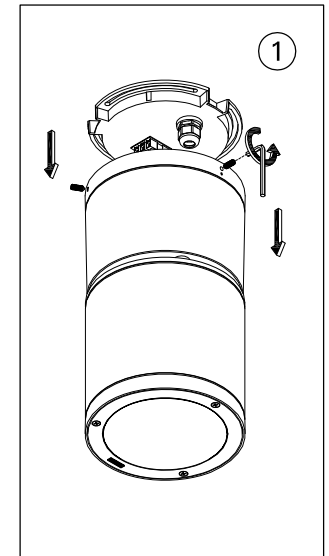
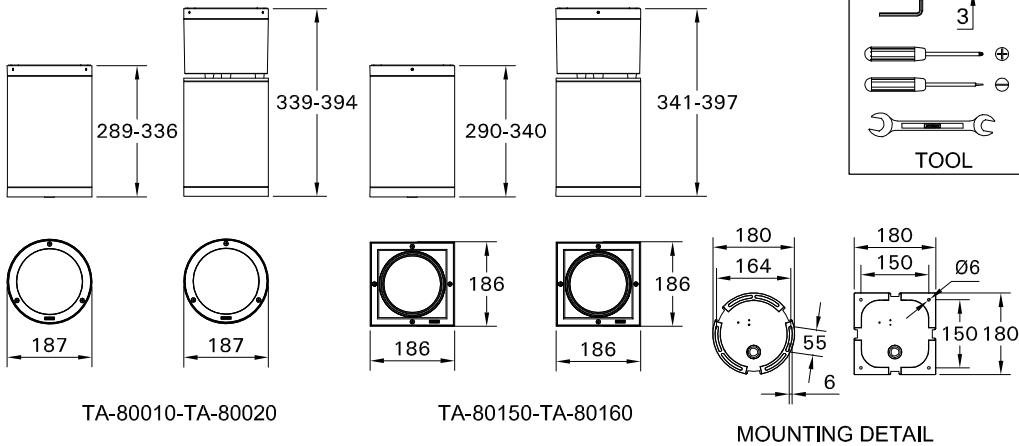


The quality of life ...

For installation of Tango cylindrical and square surface exterior downlight dia 186mm.  
Model. TA-80010-TA-80020 and TA-80150-TA-80160.

## Product drawing (dimensions)

CE IP65 IK10 (0.5m)



- LIGMAN standard products are supplied with the control gear 220/230v 50Hz.  
The control gear for other voltages and frequencies is available upon request, please consult us for more details.
- LIGMAN luminaires are designed to conform IEC 60598 2-1 standard.

Technical amendments and modifications techniques reserved.

Ligman Lighting Company Limited

Head office and factory  
17/2 Moo 4, Monthong, Bangnampreaw, Chachoengsao 24150 Thailand  
Business Contact Address  
Branch : Marketing department / Showroom & Customer service  
2912 Ladprao Rd., Klonjun, Bangkok, Bangkok 10240 Thailand  
Tel : +66 (2) 7339140 Fax : +66 (2) 7339154

www.ligmanlighting.com

M TA-80010/24/07/13/REV.8

1/1

ISO 9001  
ISO 14001  
BUREAU VERITAS  
Certification



FM-TS-13/25-05-2007-REV.2