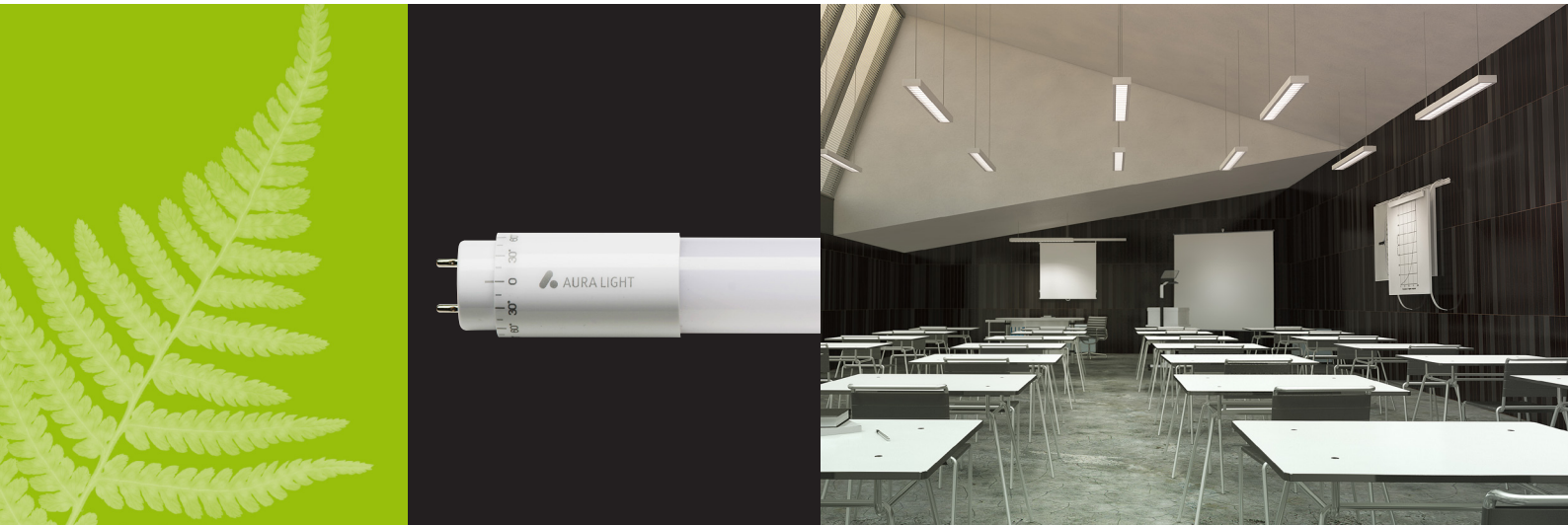




Aura OptiT8 Long Life

A LED retrofit replacing T8 fluorescent in luminaires with magnetic ballasts



- LED T8 retrofit
- High efficacy – up to 160 lm/W
- High light output – up to 4000 lm
- Colour rendering ≥ 80
- 50,000 hour system lifetime (L70B10)
- Reduces CO₂ emissions and maintenance costs
- Compatible with magnetic ballasts (with dummy starter)
- Rotatable cap
- IP20
- All components UL94-V0
- ENEC
- 5-year guarantee

Ideal for:

- Refrigeration
- Offices
- Supermarkets
- Retail
- Signs

Aura OptiT8 Long Life is a highly efficient LED T8 retrofit light source that delivers excellent energy efficiency, high quality of light, and has a rated system lifetime of 50,000 hours. It is intended to be used as a quick solution to save energy in existing luminaire installations replacing T8 fluorescent tubes operated by magnetic ballasts. With minimal effort it is possible to safely upgrade installations to LED technology. Aura OptiT8 Long Life gives you energy saving lighting today without expensive installation costs.

Aura OptiT8 Long Life is especially suitable for cold applications or applications with high switching frequencies. It offers outstanding thermal and electrical design features making it a reliable product designed for Long Life. The Aura OptiT8 Long Life tube is backed by a 5-year guarantee.

Aura OptiT8 Long Life - when you want an easy installation and change to high quality LED.

Overview

Aura OptiT8 Long Life is a replaceable T8 retrofit LED light source with integrated driver and heat sink suited to replace fluorescent T8 tubes operated by magnetic ballasts in existing luminaire installations.

Applications

Aura OptiT8 Long Life is ideal for customers who wish to reduce energy costs with minimal effort. It is intended for direct replacement of fluorescent tubes in luminaires operated today with magnetic ballasts. It is suitable for lighting in offices, schools, public buildings, supermarkets, parking garages and anywhere where fluorescent lighting is currently used. It is now possible to quickly save energy while at the same time keeping a high quality of light.

Lifetime

The rated system lifetime L70B10 (i.e. 90% of light sources still have at least 70% of initial lumen output) for Aura OptiT8 Long Life is 50,000 hours (Ta 25°C). Calculated LED lifetime according to TM-21 as per below table.

LUMEN MAINTENANCE	CALCULATED LED LIFETIME (Ta) 25°C
L70	170,000 h
L80	108,000 h
L90	53,000 h

The calculations are based on TM-21 at ambient temperature (Ta) 25°C. The values are based on OptiT8 1200 mm 20W.

RATED LIFETIME (Ta) 25°C	NOMINAL LIFETIME (Ta) 25°C
50,000 h	50,000 h

Long Life Technology

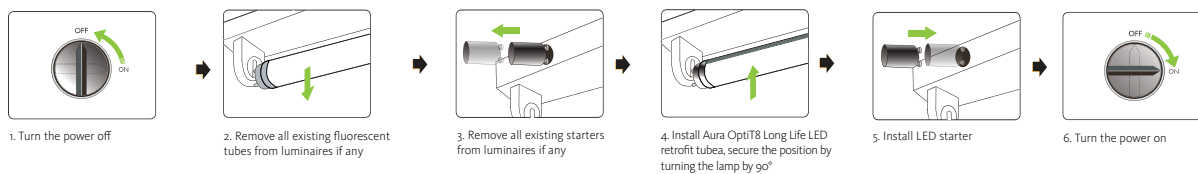
Aura OptiT8 Long Life tube is developed to provide highly efficient light output, with a reliable thermal and electrical design.

Inside the tube is a reliable LED engine, designed for Long Life and high quality of light throughout the lifetime. Driver components and LED junction temperature are well below maximum stated levels to ensure high lumen maintenance.



»Aura OptiT8 Long Life enables quick energy savings in existing installations.«

Easy installation Aura Opti T8 Long Life



NB: If a power factor compensation capacitor is installed in the luminaire it may remain but it lowers the power factor. See below table.

NB: Not usable in luminaires with serial lamp connection i.e. more than one tube on one magnetic ballast. In such case luminaire needs to be rewired to parallel lamp connection.

NB: It is possible to change the order of step four and five above.



Recommended number of tubes per fuse

	CCG + Capacitor		CCG no Capacitor	
	10A	16A	10A	16A
OptiT8, 20W	38	62	92	154
OptiT8, 24W	36	60	89	149
OptiT8 HO 25W	36	60	89	149

Technical Information

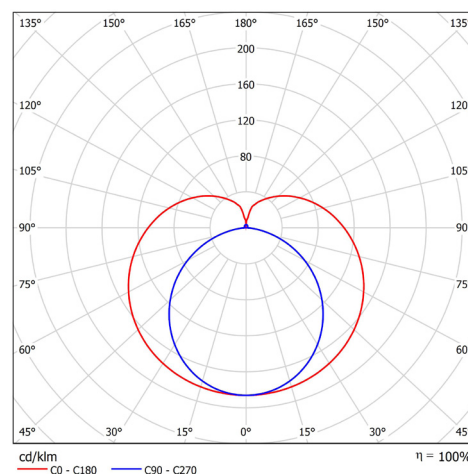
Aura OptiT8 provides high efficacy, up to 160 lm/W with a fluorescent look to the tube. The quality of light is high, with colour rendering of more than 80 and with an initial chromaticity tolerance of maximum 3 SDCM. It is currently available in 3000 K, 4100 K and 5000 K.

It comes equipped with rotatable end-caps making it possible to fine-tune direction of the light after installation. The end caps can rotate 90 degrees in both directions.

Long Life Guarantee

The Aura OptiT8 Long Life is developed and manufactured under strict quality control processes. Aura Light offers a 5-year guarantee for Aura OptiT8 Long Life. The installations must comply with the specified max ambient temperatures inside luminaire installations and the user must follow the installation instructions. For more detailed information on our Long Life guarantees see our website or contact your Aura Light-representative.

Light Distribution Aura OptiT8 Long Life



Aura OptiT8 Long Life | Technical specifications

OPTIT8	ARTICLE NO.	TYPE	COLOUR	COLOUR TEMP. (K)	POWER CONSUMPTION (W)	TYPICAL LUMINOUS FLUX* (WARM LED)	EFFICACY (lm/W)	LENGTH WITHOUT PINS (mm)	UNITS/PACK (pcs)	ENERGY CLASS
	Aura OptiT8 Long Life, G13									
	579613	830 diffused	Warm White	3000	20	2457	123	1200	30	A+
	579614	840 diffused	White	4100	20	2619	131	1200	30	A+
	579615	850 diffused	Cool White	5000	20	2700	135	1200	30	A+
	579633	830 diffused	Warm White	3000	24	2912	121	1500	30	A+
	579634	840 diffused	White	4100	24	3104	129	1500	30	A+
	579635	850 diffused	Cool White	5000	24	3200	135	1500	30	A+

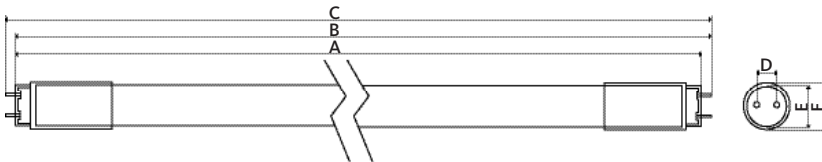
OPTIT8 HO	ARTICLE NO.	TYPE	COLOUR	COLOUR TEMP. (K)	POWER CONSUMPTION (W)	TYPICAL LUMINOUS FLUX* (WARM LED)	EFFICACY (lm/W)	LENGTH WITHOUT PINS (mm)	UNITS/PACK (pcs)	ENERGY CLASS
	Aura OptiT8 Long Life High Output, G13									
	579653	830 diffused	Warm White	3000	25	3640	146	1500	30	A++
	579654	840 diffused	White	4100	25	3880	155	1500	30	A++
	579655	850 diffused	Cool White	5000	25	4000	160	1500	30	A++

*Tolerance level +/- 8%
LED dummy starter included with each tube



Aura OptiT8 Long Life rotatable cap. Can be rotated 90° degrees in both directions.

Dimensions



TYPE	A	B	C	D	E	F
1200 mm	1200 mm*	1206,5 mm*	1213,6 mm*	12,7 mm	24,8 mm	28,8 mm
1500 mm	1500 mm*	1507,1 mm*	1514,2 mm*	12,7 mm	24,8 mm	28,8 mm

*max values, in accordance with T8 standard IEC60081.

Input	200-240 AC 50/60 Hz
Colour rendering index	≥ 80
Initial colour accuracy	3 SDCM
Beam angle	150°
Ambient temperature	-20° - + 50°
Pf	> 0.9
Type of protection	IP20
ESD protection	Contact 4kV / Air 8kV
Cap base	G13
Dimmable	No
Weight	240 g (1200 mm) 340 g (1500 mm)
Tube and cap material	Polycarbonate
LLMF - end nominal lifetime	70%
Starting time (seconds)	0,5 (max)
Warm-up time to 60% light output	Instant full light
Suitable for accent lighting	No
Switching cycles	> 200 000
Approvals	CE, ENEC

All specifications subject to change. For the latest version of this product leaflet, please visit www.auralight.com/products.

2016-04-18