



Plusline Large (double ended)

Plusline Large 1500W R7s 240V 1CT

PlusLine Large flood delivers maximum light output to light up large areas like outdoor, buildings and shops.

Product data

• General Characteristics

Cap-Base	R7s
Bulb	T4 [T4: .434 inch / 11mm]
Bulb Finish	Clear
Operating Position	p4 [Parallel +/-4D or Horizontal(HOR)]
Life to 50% failures	2000 hr
Nominal Lifetime	2000 hr
Rated Lifetime (hours)	2000 hr
Rated Lifetime (years)	2 an

• Light Technical Characteristics

Color Rendering Index	100 Ra8
Color Temperature	2900 K
Color Temperature Technical	2900 K
Luminous flux lamp	33000 Lm
Rated Luminous Flux	33000 Lm
Luminous Efficacy Lamp	22 Lm/W
LLMF - end nominal lifetime	80 (min) %

• Electrical Characteristics

Rated Wattage	1500.0 W
Lamp Wattage	1500 W
Lamp Wattage Technical	1500.0 W
Power Factor	1 -
Voltage	240 V
Lamp Current	6.25 A
Dimmable	Yes

Starting Time	0.0 s
Warm-up Time to 60% Light Outp	instant full light

• Environmental Characteristics

Energy Efficiency Label (EEL)	C
Energy consumption kWh/1000h	1500 kWh

• Measuring Conditions

Switching cycle	8000X
-----------------	-------

• Luminaire Design Requirements

Pinch Temperature	350 (max) C
Bulb Temperature	900 (max) C

• Product Dimensions

Insertion Length B	249.1 (min), 250.7 (nom), 252.3 (max) mm
Overall Length C	254.1 (max) mm
Diameter D	11 (max) mm

• Product Data

Order code	923932245703
Full product code	923932245703
Full product name	Plusline Large 1500W R7s 240V 1CT
Order product name	Plusline L 1500W R7s 240V 1CT/10
Pieces per pack	1
Packs per outerbox	10
Bar code on pack - EAN1	8711500055996

PHILIPS

Plusline Large (double ended)

Bar code on
outerbox - EAN3
Logistic code(s) -
12NC

8718291720867

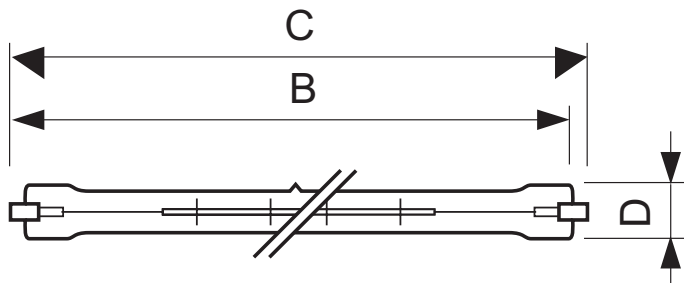
923932245703

ILCOS code
Net weight per piece

HDG//RS-1500-240-R7s-250,7

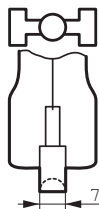
0.022 kg

Dimensional drawing



Plusline Large 1500W R7s 240V 1CT

Product	B (Min)	B (Norm)	B (Max)	C (Max)	D (Norm)	D (Max)
DEBig 1500W R7s 240V T11 CL	249.1	250.7	252.3	254.1	-	11



R7s



© 2014 Koninklijke Philips N.V. (Royal Philips)
All rights reserved.

Specifications are subject to change without notice. Trademarks are the property of Koninklijke Philips N.V. (Royal Philips) or their respective owners.

www.philips.com/lighting

2014, April 16
data subject to change