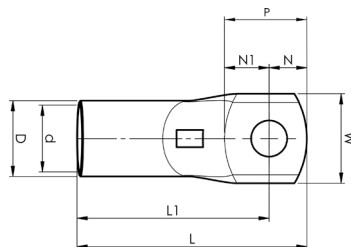




ELPRESS®

Product Datasheet

KRFN tube terminals 50 - 240 mm² with narrow palm



mm ² (Cu)	AWG Cu	Name	Screw	W (mm)	d	D	N	N1	P	L	t	s	Die	Pcs/pack	Tool
50	1/0	KRFN50-6	M6	18	11	14,5	11	11,5	22,5	51	3,4	19	14,5	100	PVL350, V600, DV1300
50	1/0	KRFN50-8	M8	18	11	14,5	11	11,5	22,5	51	3,4	19	14,5	100	PVL350, V600, DV1300
50	1/0	KRFN50-10	M10	18	11	14,5	11	11,5	22,5	51	3,4	19	14,5	100	PVL350, V600, DV1300
70	2/0	KRFN70-6	M6	20	13	17	11	11,5	22,5	56	4,2	22	17	50	PVL350, V600, DV1300
70	2/0	KRFN70-8	M8	20	13	17	11	11,5	22,5	56	4,3	22	17	50	PVL350, V600, DV1300
70	2/0	KRFN70-10	M10	20	13	17	11	11,5	22,5	56	4,3	22	17	50	PVL350, V600, DV1300
95	4/0	KRFN95-8	M8	24	15	20	11	12	23	61	5	25	20	50	V600, DV1300, DV250
95	4/0	KRFN95-10	M10	24	15	20	11	13	24	62	5	25	20	50	V600, DV1300, DV250
95	4/0	KRFN95-12	M12	24	15	20	12	14	26	64	5	25	20	50	V600, DV1300, DV250
120	250	KRFN120-8	M8	26	17	22	11	12	23	66	5	27	22	50	V600, DV1300, DV250
120	250	KRFN120-10	M10	26	17	22	11	13	24	67	5	27	22	50	V600, DV1300, DV250
120	250	KRFN120-12	M12	26	17	22	12	14	26	69	5	27	22	50	V600, DV1300, DV250
150	300	KRFN150-10	M10	30	19	25	11	13	24	73	6	32	25	25	V600, DV1300, DV250
150	300	KRFN150-12	M12	30	19	25	12	14	26	75	6	32	25	25	V600, DV1300, DV250
185	350	KRFN185-10	M10	32	21	27	11	14	25	80	6,3	37	27	20	DV1300, DV250
185	350	KRFN185-12	M12	32	21	27	12	15	27	82	6,3	37	27	20	DV1300, DV250
185	350	KRFN185-16	M16	32	21	27	15	16	31	86	6,3	37	27	20	DV1300, DV250
240	500	KRFN240A-10	M10	38	22,5	30	11	16	27	84	6,7	37	30	10	DV1300, DV250
240	500	KRFN240A-12	M12	38	22,5	30	12	15	27	84	6,7	37	30	10	DV1300, DV250
240	500	KRFN240A-16	M16	38	22,5	30	15	18	33	90	6,7	37	30	10	DV1300, DV250

t = palm thickness, s = strip length



ELPRESS®