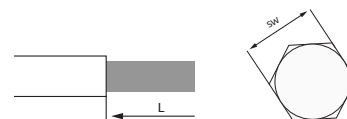


Brass Shear Bolt cable lugs type MSLL up to 12kV



Mechanical Shear Bolt lugs/connectors may only be fitted by qualified and trained specialist in dry and clean conditions. Carefully read and follow the installation guide before the fitting. MOREK is not responsible for any damage that may occur because of misuse of the product.

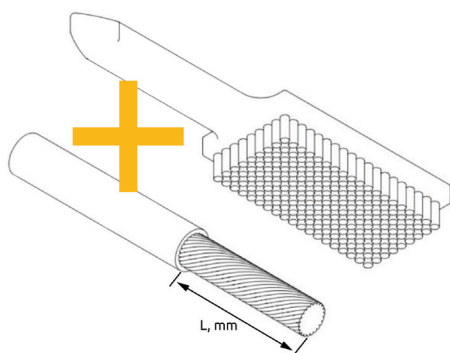


Lug type

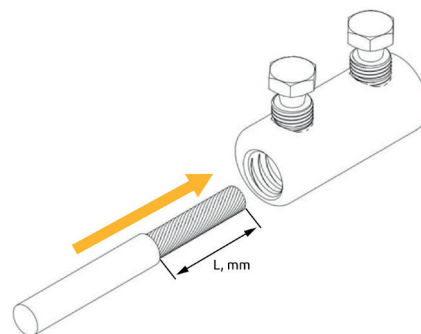
Conductor size, mm²

MSLL (Brass bolts)	RE	RM	SE	SM	L, mm	SW, mm
MSLL0351B10	6-35	10-35	16-35	16-25	18	8
MSLL0351B12	6-35	10-35	16-35	16-25	18	8
MSLL0501B10	6-50	10-50	16-50	16-35	28	8
MSLL0501B12	6-50	10-50	16-50	16-35	28	8
MSLL0702B12	16-70	16-70	16-70	16-70	40	10
MSLL1502B12	35-150	35-150	35-150	35-120	52	14
MSLL2402B12	120-240	120-240	120-240	120-240	57	16
MSLL2402B16	120-240	120-240	120-240	120-240	57	16
MSLL3002B12	120-300	120-300	120-300	120-300	59	22
MSLL3002B16	120-300	120-300	120-300	120-300	59	22

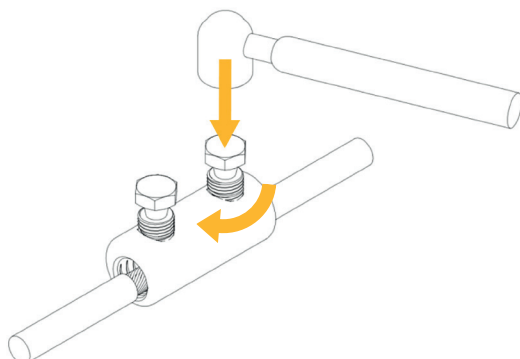
1.



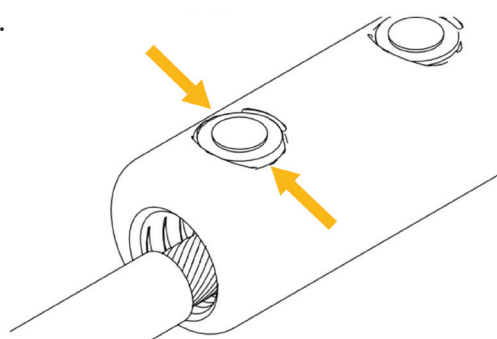
2.



3.



4.



Suitable for aluminum or copper conductors. Check the suitability of lug/connector according to conductors size mm² given in the table.

1. Strip insulation of conductor to fit into barrel of connector. Clean and brush conductor before installation.
2. Place conductor into barrel. Bolts are covered with special grease, do not remove the grease.
3. Fasten bolts steadily by the hand first and with proper tool after - until the heads shear off.
4. Bolts have to be rounded if the surface is not flush with lugs body or sharp edges appear.

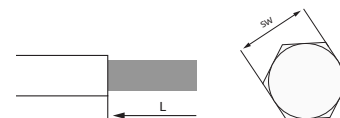
Aluminium Shear Bolt cable lugs type MSLL up to 12kV



Mechanical Shear Bolt lugs/connectors may only be fitted by qualified and trained specialist in dry and clean conditions. Carefully read and follow the installation guide before the fitting. MOREK is not responsible for any damage that may occur because of misuse of the product.

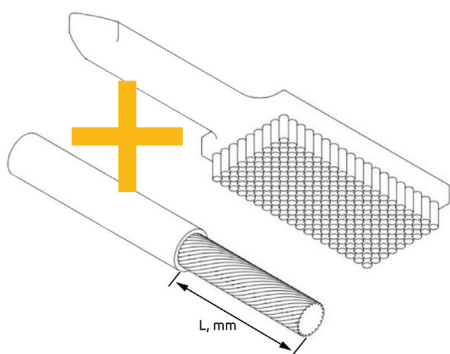
Lug type

Conductor size, mm²

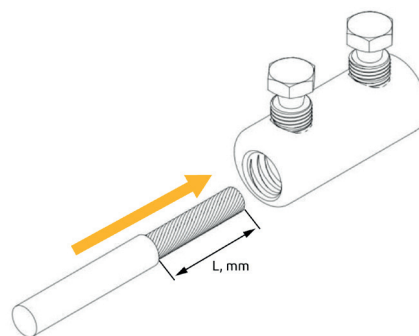


MSLL (Aluminium bolts)	RE	RM	SE	SM	L, mm	SW, mm
MSLL0351A10	6-35	10-35	16-35	16-25	18	8
MSLL0351A12	6-35	10-35	16-35	16-25	18	8
MSLL0501A10	6-50	10-50	16-50	16-35	28	8
MSLL0501A12	6-50	10-50	16-50	16-35	28	8
MSLL0702A12	16-70	16-70	16-70	16-70	40	10
MSLL0951A12	16-95	16-95	16-95	16-95	24	10
MSLL1502A12	35-150	35-150	35-150	35-120	52	14
MSLL2402A12	50-240	50-240	50-240	50-240	57	16
MSLL2402A16	50-240	50-240	50-240	50-240	57	16
MSLL3002A12	120-300	120-300	120-300	120-300	59	22
MSLL3002A16	120-300	120-300	120-300	120-300	59	22

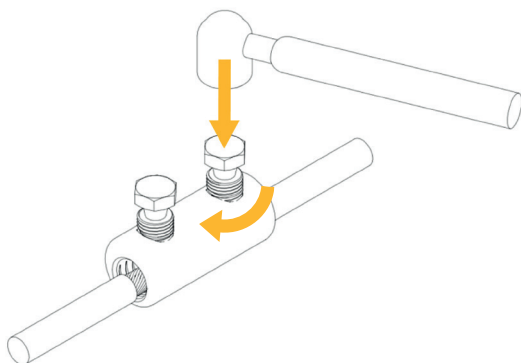
1.



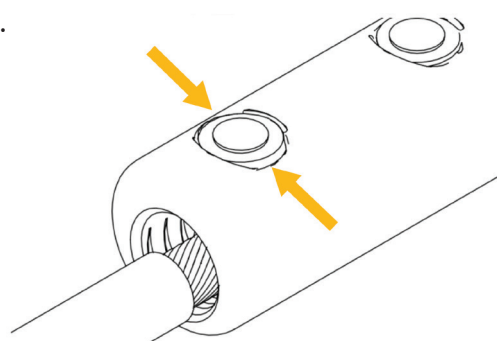
2.



3.



4.



Suitable for aluminum or copper conductors. Check the suitability of lug/connector according to conductors size mm² given in the table.

1. Strip insulation of conductor to fit into barrel of connector. Clean and brush conductor before installation.
2. Place conductor into barrel. Bolts are covered with special grease, do not remove the grease.
3. Fasten bolts steadily by the hand first and with proper tool after - until the heads shear off.
4. Bolts have to be rounded if the surface is not flush with lugs body or sharp edges appear.

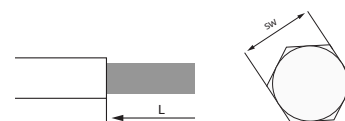
Brass Shear Bolt cable connectors type MSCL up to 12kV



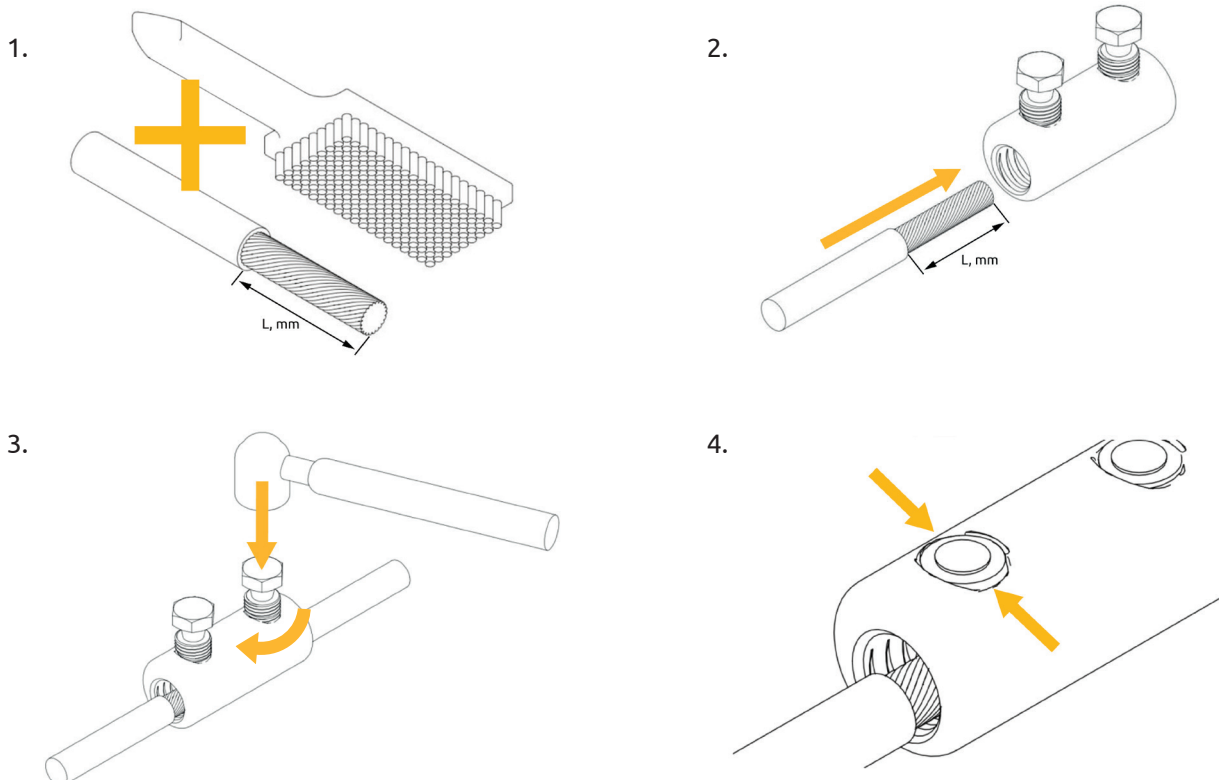
Mechanical ShearBolt lugs/connectors may only be fitted by qualified and trained specialist in dry and clean conditions. Carefully read and follow the installation guide before the fitting. MOREK is not responsible for any damage that may occur because of misuse of the product.

Connector type

Conductor size, mm²



MSCL (Brass bolts)	RE	RM	SE	SM	L, mm	SW, mm
MSCL0162B00	1,5-16	1,5-16	1,5-16	1,5-16	14	8
MSCL0252B00	6-35	10-25	16-25	16-25	17	8
MSCL0502B00	16-50	16-50	16-50	16-35	24	8
MSCL0952B00	25-95	25-95	25-95	25-95	24	10
MSCL1502B00	35-150	35-150	35-150	35-120	30	14
MSCL2402B00	120-240	120-240	120-240	120-240	36	16
MSCL3004B00	150-300	150-300	150-300	150-300	52	22



Suitable for aluminum or copper conductors. Check the suitability of lug/connector according to conductors size mm² given in the table.

1. Strip insulation of conductor to fit into barrel of connector. Clean and brush conductor before installation.
2. Place conductor into barrel. Bolts are covered with special grease, do not remove the grease.
3. Fasten bolts steadily by the hand first and with proper tool after - until the heads shear off.
4. Bolts have to be rounded if the surface is not flush with lugs body or sharp edges appear.

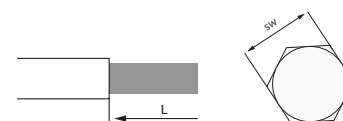
Aluminium Shear Bolt cable connectors type MSCL up to 12kV



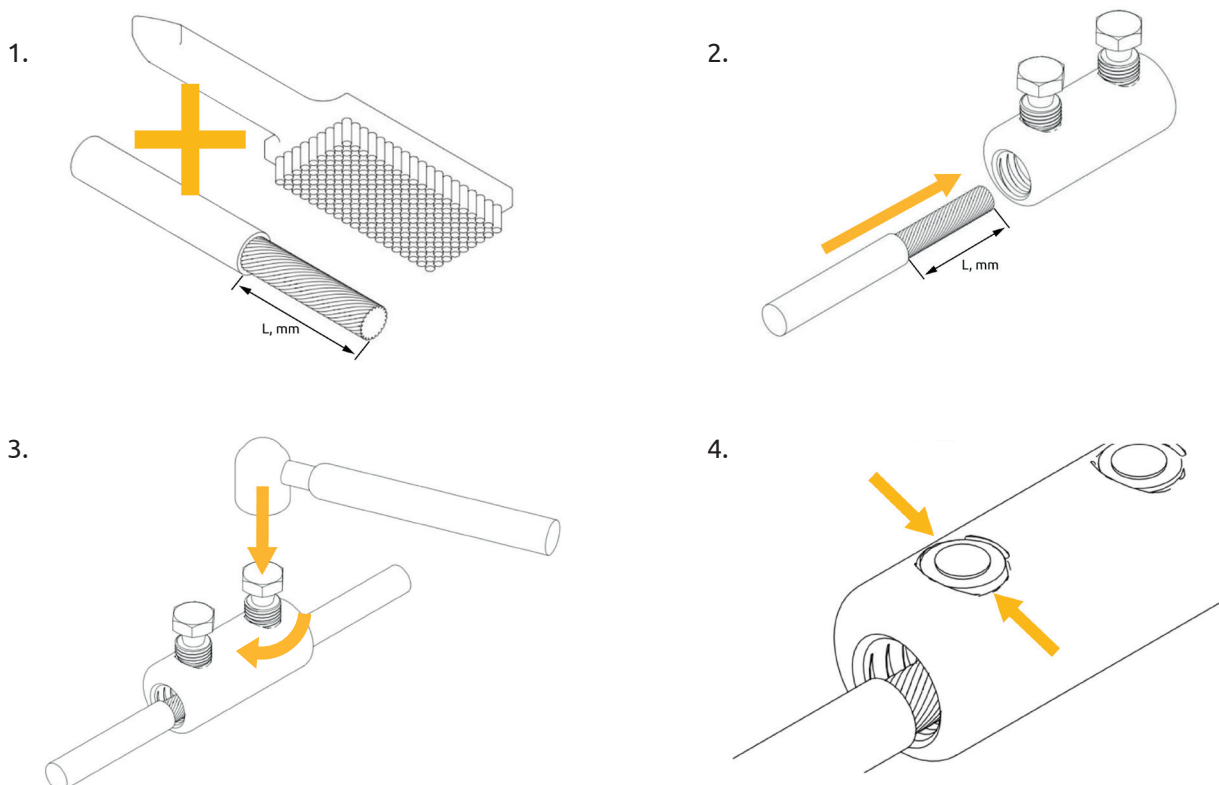
Mechanical ShearBolt lugs/connectors may only be fitted by qualified and trained specialist in dry and clean conditions. Carefully read and follow the installation guide before the fitting. MOREK is not responsible for any damage that may occur because of misuse of the product.

Connector type

Conductor size, mm²



MSCL (Aluminium bolts)	RE	RM	SE	SM	L, mm	SW, mm
MSCL0162A00	1,5-16	1,5-16	1,5-16	1,5-16	14	8
MSCL0252A00	6-35	10-25	16-25	16-25	17	8
MSCL0502A00	10-50	10-50	16-50	16-35	17	8
MSCL0952A00	16-95	16-95	16-95	16-95	24	10
MSCL1502A00	25-150	25-150	25-150	25-120	30	13
MSCL2402A00	120-240	120-240	120-240	120-240	36	16
MSCL2404A00	50-240	50-240	50-240	50-240	56	16
MSCL3004A00	150-300	150-300	150-300	150-300	52	22



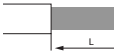
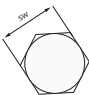





Suitable for aluminum or copper conductors. Check the suitability of lug/connector according to conductors size mm² given in the table.

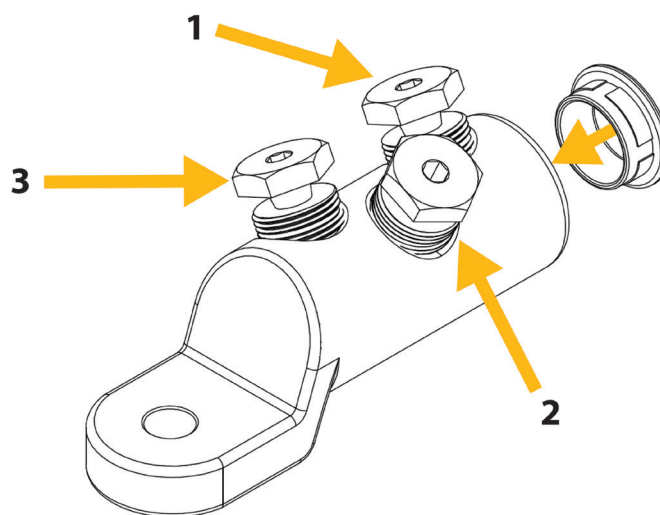
1. Strip insulation of conductor to fit into barrel of connector. Clean and brush conductor before installation.
2. Place conductor into barrel. Bolts are covered with special grease, do not remove the grease.
3. Fasten bolts steadily by the hand first and with proper tool after - until the heads shear off.
4. Bolts have to be rounded if the surface is not flush with lugs body or sharp edges appear.

Mechanical ShearBolt lugs type MSLM up to 36kV



Mechanical ShearBolt lugs/connectors may only be fitted by qualified and trained specialist in dry and clean conditions. Carefully read and follow the installation guide before the fitting. MOREK is not responsible for any damage that may occur because of misuse of the product.

	Product code cross-section	MSLM0951... 16-95 mm ²		MSLM1501... 50-150 mm ²			MSLM2402... 95-240 mm ²			MSLM3002... 120-300 mm ²		MSLM4003... 185-400 mm ²	
	L, mm	32 mm		42 mm			57 mm			67 mm		79 mm	
	Bolt size SW/mm	13/10		17 / 12			19 / 16			22		22	
	Centring sleeve	Blue	none	Yellow	Gray	none	Red	Brown	none	Gray	none	Gray	none
Al Cu	RE: 	10-50	70-95	50	70-95	120-150	95	120-150	185-240	120-185	240-300	185-240	300-400
Al Cu	SE: 	16-50	70	50	70-95	120-150	95	120-150	185-240	120-185	240-300	185-240	300-400
Al Cu	RM: 	16-50 10-50	70-95	50 35-50	70-95	95-150	95	120-150	185-240	120-185	240-300	185-240	300-400
Al Cu	RMV: 	16-50	70-95	35-50	70-95	120-150	95-120	150	185-240	120-185	240-300	185-240	300-400
Al Cu	SM: 	25-35	50-70	50	50-70	95-120	95	95-120	150-185	120-150	185	185	240-300



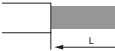
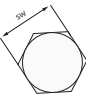





Suitable for aluminium and/or copper conductors.

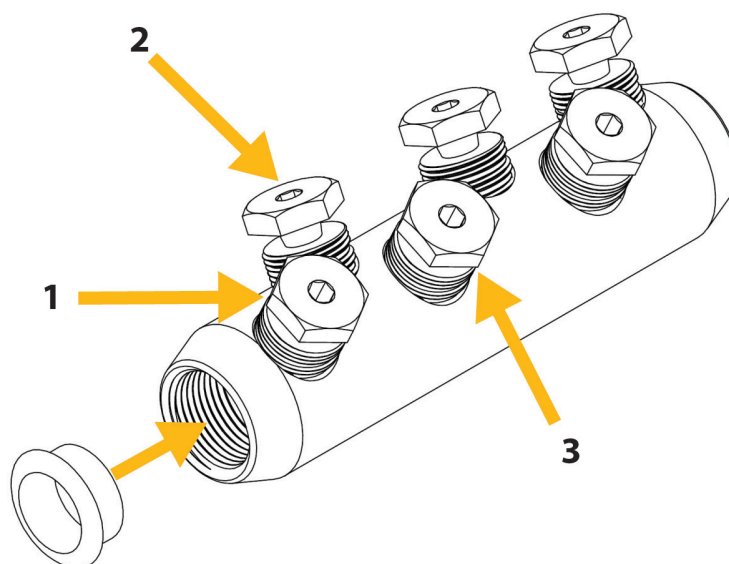
1. Strip insulation of conductor to fit into barrel of lug/connector according to the length (L, mm) indicated in the table. Clean and brush conductor before the installation.
2. Put the centering ring in to barrel according to table if needed.
3. Place conductor in to barrel. Bolts and inner surface are covered with special grease, do not remove the grease.
4. Fasten bolts steadily by the hand according to shown order. Screw the bolts with proper tool according to shown order until the heads shear off.
5. Bolts have to be rounded if the surface is not flush with lugs/connectors body or sharp edges appear.

Mechanical ShearBolt connectors type MSCM up to 36kV



Mechanical ShearBolt lugs/connectors may only be fitted by qualified and trained specialist in dry and clean conditions. Carefully read and follow the installation guide before the fitting. MOREK is not responsible for any damage that may occur because of misuse of the product.

	Product code cross-section	MSCM0952... 16-95 mm ²		MSCM1502... 50-150 mm ²			MSCM2404... 95-240 mm ²			MSCM3004... 120-300 mm ²		MSCM4006... 185-400 mm ²	
	L, mm	33 mm		35 mm			56 mm			67 mm		82 mm	
	Bolt size SW/mm	13/10		17 / 12			19 / 16			22		22	
	Centring sleeve	Blue	none	Yellow	Gray	none	Red	Brown	none	Gray	none	Gray	none
Al Cu	RE: 	10-50	70-95	50	70-95	120-150	95	120-150	185-240	120-185	240-300	185-240	300-400
Al Cu	SE: 	16-50	70	50	70-95	120-150	95	120-150	185-240	120-185	240-300	185-240	300-400
Al Cu	RM: 	16-50 10-50	70-95	50 35-50	70-95	95-150	95	120-150	185-240	120-185	240-300	185-240	300-400
Al Cu	RMV: 	16-50	70-95	35-50	70-95	120-150	95-120	150	185-240	120-185	240-300	185-240	300-400
Al Cu	SM: 	25-35	50-70	50	50-70	95-120	95	95-120	150-185	120-150	185	185	240-300



Suitable for aluminium and/or copper conductors.

1. Strip insulation of conductor to fit into barrel of lug/connector according to the length (L, mm) indicated in the table. Clean and brush conductor before the installation.
2. Put the centering ring in to barrel according to table if needed.
3. Place conductor in to barrel. Bolts and inner surface are covered with special grease, do not remove the grease.
4. Fasten bolts steadily by the hand according to shown order. Screw the bolts with proper tool according to shown order until the heads shear off.
5. Bolts have to be rounded if the surface is not flush with lugs/connectors body or sharp edges appear.

MSCS

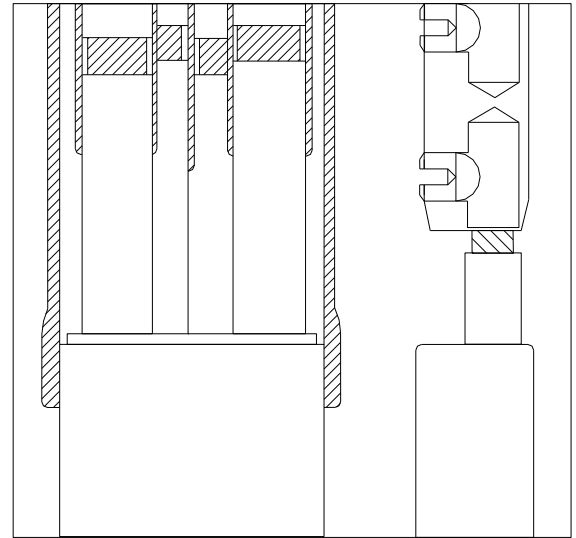
CABLE JOINT

XLPE/PVC

1Kv from 6 up to 240 mm²

4 CORE UNARMoured CABLE

Ensure correct kit size is used for intended cable.
Check kit contents prior to installation.
Carefully read and follow installation instructions.

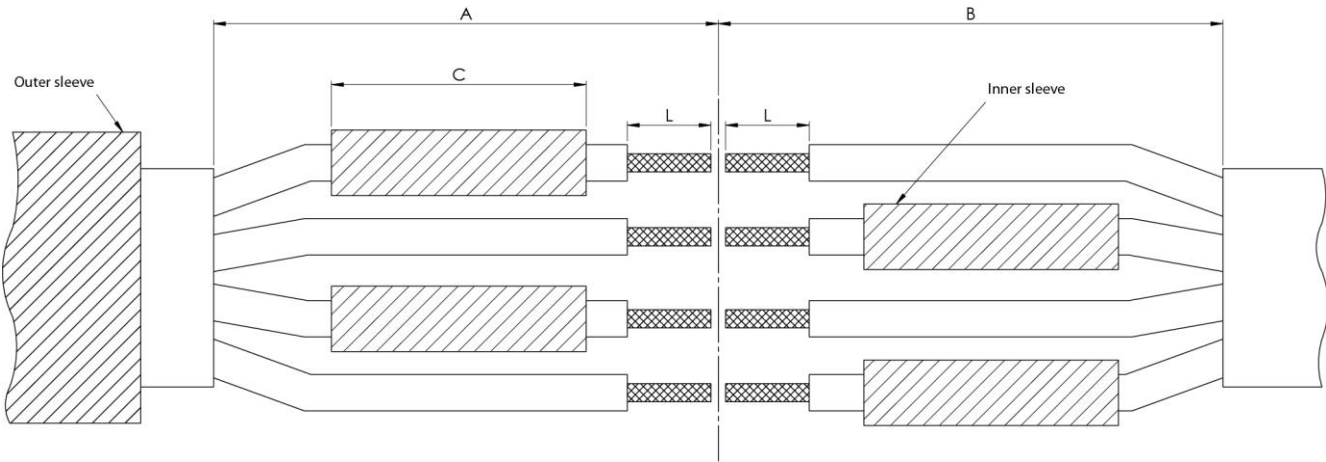


This joint is suitable for use only with plastic insulated cable connections for low voltage applications and in conjunction with Shafer bolt connectors. For use underground, indoor or outdoor. For any other use please consult MOREK.

Use a propane (preferred) or butane gas torch.
Use torch in a well ventilated area.
Use a soft flame with yellow tip.
Pencil blue flames should not be used.
Aim torch in direction of heat shrink to preheat material.
Continuously move flame to avoid scorching.
Clean and degrease all parts in contact with adhesive.
Any cut tubing should be smooth with no jagged edges.
Shrink tubing as in recommended instructions.
Tubing should be smooth, wrinkle free with inner components defined.

The information contained in these installation instructions is for use by trained electrical power installers only. Due to field conditions during installation MOREK's only obligations are MOREK's standard conditions of sale for this product and in no other cases shall MOREK be liable for any incidental, indirect or consequential damages resulting from misuse or incorrect installation of this product.

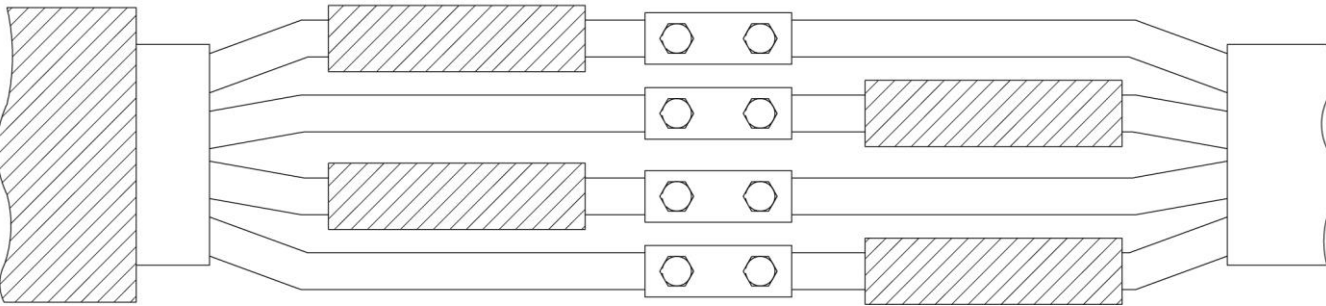
Cable preparation



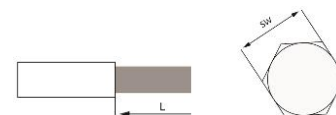
- Strip outer sheath of cables to dimensions in table 1.
- Nest sleeves in accordance with above drawing.
- Remove core insulation as shown.
- Abrade min 120 mm of remaining outer sheath on both cables.
- Clean & degrease all cables.

Table 1

C.S.A. mm ²	(A) mm	(B) mm	(C) mm	(D) mm	L
6 – 25	110	170	100	500	½ Connector depth
25 – 70	110	230	130	550	
70 – 120	180	400	150	800	
120 – 240	180	430	160	900	

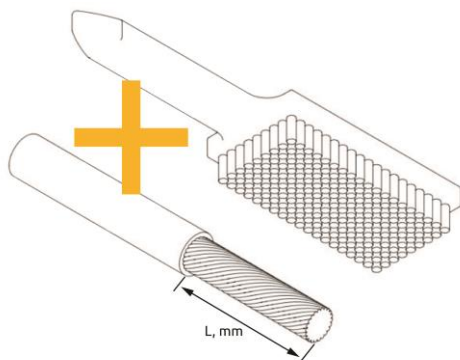


Connect the Shear Bolt connectors.

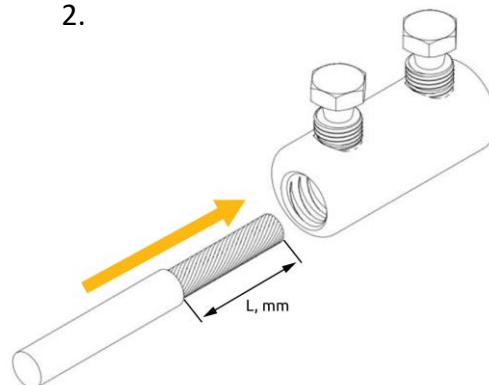


Connector type	Conductor size, mm ²					
MSCL (Al bolts)	RE	RM	SE	SM	L, mm	SW, mm
MSCL0162A00	1,5-16	1,5-16	1,5-16	1,5-16	14	8
MSCL0252A00	6-35	10-25	16-25	16-25	17	8
MSCL0502A00	10-50	10-50	16-50	16-35	17	8
MSCL0952A00	16-95	16-95	16-95	16-95	24	10
MSCL1502A00	25-150	25-150	25-150	25-120	30	13
MSCL2402A00	120-240	120-240	120-240	120-240	36	16
MSCL2404A00	50-240	50-240	50-240	50-240	56	16
MSCL3004A00	150-300	150-300	150-300	150-300	52	22

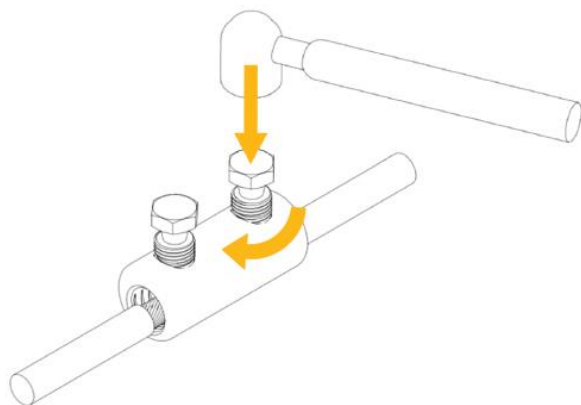
1.



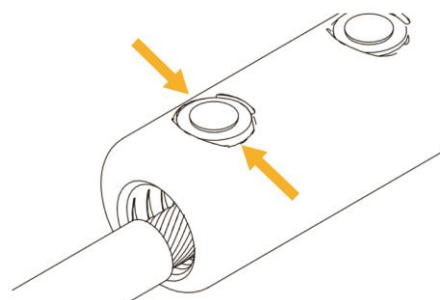
2.



3.

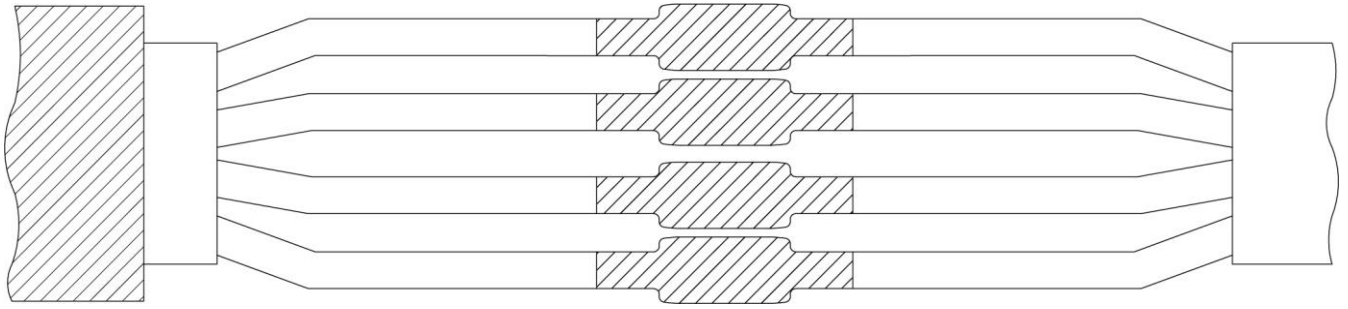


4.



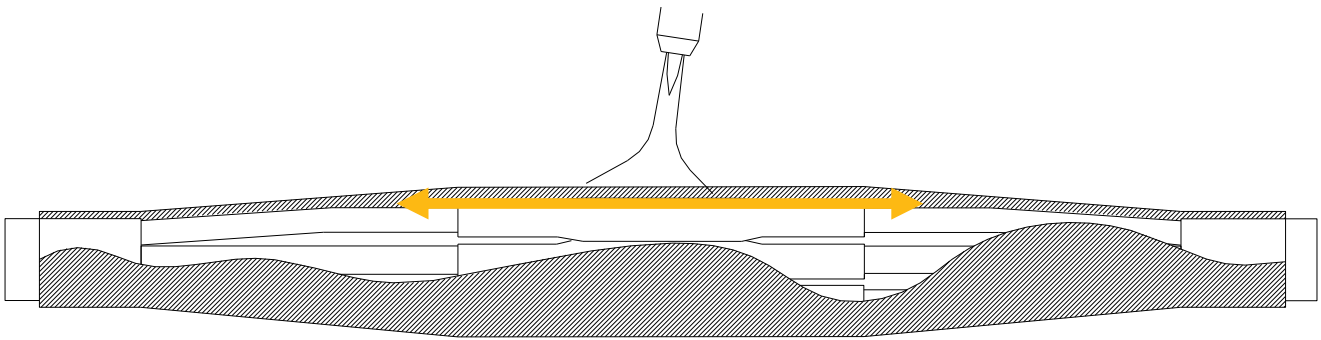
Suitable for aluminum or copper conductors. Check the suitability of lug/connector according to conductors size mm² given in the table.

1. Strip insulation of conductor to fit into barrel of connector. Clean and brush conductor before installation.
2. Place conductor into barrel. Bolts are covered with special grease, do not remove the grease.
3. Fasten bolts steadily by the hand first and with proper tool after - until the heads shear off.
4. Bolts have to be rounded if the surface is not flush with lugs body or sharp edges appear.



Position core sleeves centrally over connectors.

Using a soft yellow flame shrink from sleeve middle, working outwards.



Position outer sleeve centrally over joint.

Using a soft yellow flame shrink from sleeve middle, working outwards.

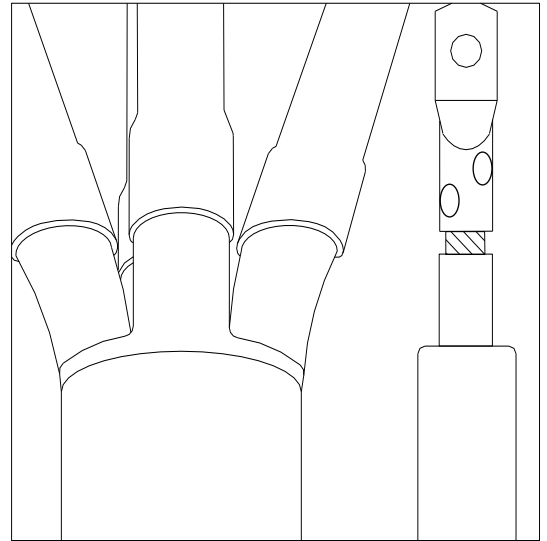
Joint is completed.

ALLOW TO COOL BEFORE MOVING OR APPLYING LOAD

MSLS

CABLE TERMINATION JOINT XLPE/PVC 1Kv from 6 up to 240 mm² 4 CORE UNARMoured CABLE

Ensure correct kit size is used for intended cable.
Check kit contents prior to installation.
Carefully read and follow installation instructions.

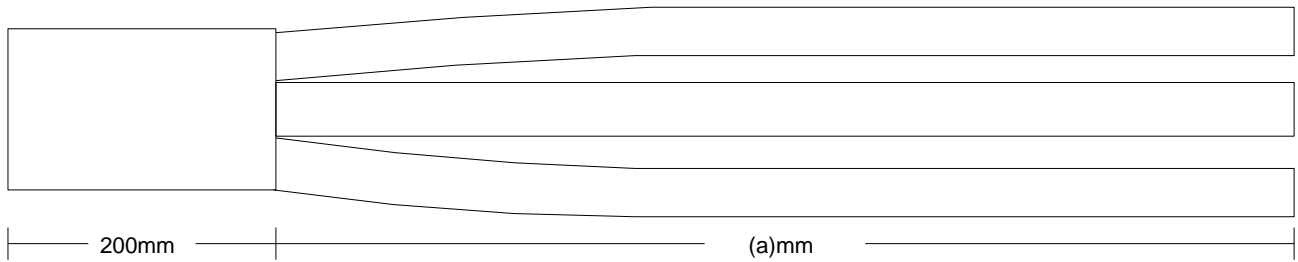


This termination is suitable for use only with plastic insulated cable connections for low voltage applications and in conjunction with commercially available pressure connector, screw connector or solder connection. For use Indoor. For any other use please consult MOREK.

Use a propane (preferred) or butane gas torch.
Use torch in a well ventilated area.
Obtain soft blue flame with yellow tip.
Pencil blue flames should not be used.
Aim torch in direction of heat shrink to preheat material.
Continuously move flame to avoid scorching.
Clean and degrease all parts in contact with adhesive.
Any cut tubing should be smooth with no jagged edges.
Shrink tubing as in recommended instructions.
Tubing should be smooth, wrinkle free with inner components defined.

The information contained in these installation instructions is for use by trained electrical power installers only. Due to field conditions during installation MOREK's only obligations are MOREK's standard conditions of sale for this product and in no other cases shall MOREK be liable for any incidental, indirect or consequential damages resulting from misuse or incorrect installation of this product.

Cable preparation

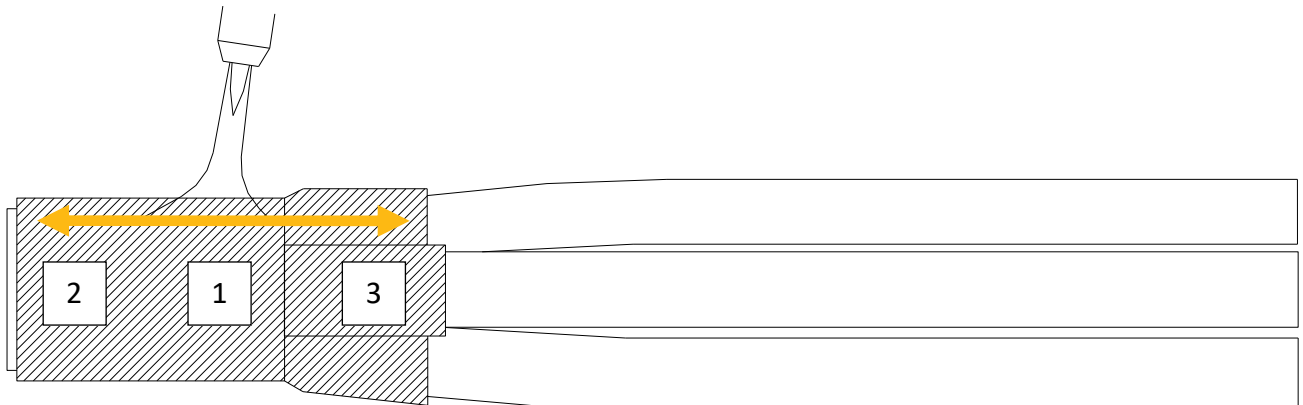


Strip outer sheath of cable to desired length (a).

Abrade min 200mm of remaining outer sheath.

Clean & degrease all cables.

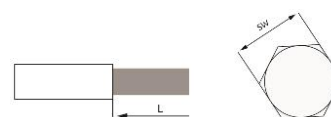
(a) = DIMENSION REQUIRED TO FIT CABLE BOX







Slide breakout boot over cores, pull well down into crutch.

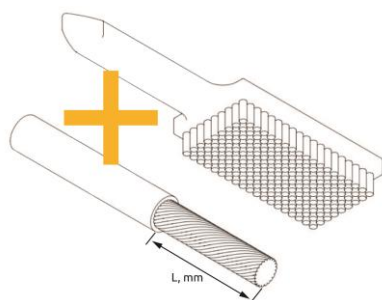
Using a soft yellow flame shrink from breakout boot crutch, working away from fingers. Finally shrink breakout boot fingers.

Mount the Shear Bolt lugs on to the cores of cable.

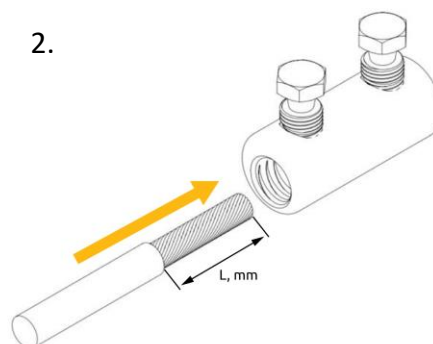


Lug type	Conductor size, mm ²					
MSLL (Al bolts)	 RE	 RM	 SE	 SM	L, mm	SW, mm
MSLL0351A10	6-35	10-35	16-35	16-25	18	8
MSLL0351A12	6-35	10-35	16-35	16-25	18	8
MSLL0501A10	6-50	10-50	16-50	16-35	28	8
MSLL0501A12	6-50	10-50	16-50	16-35	28	8
MSLL0702A12	16-70	16-70	16-70	16-70	40	10
MSLL0951A12	16-95	16-95	16-95	16-95	24	10
MSLL1502A12	35-150	35-150	35-150	35-120	52	14
MSLL2402A12	50-240	50-240	50-240	50-240	57	16
MSLL2402A16	50-240	50-240	50-240	50-240	57	16
MSLL3002A12	120-300	120-300	120-300	120-300	59	22
MSLL3002A16	120-300	120-300	120-300	120-300	59	22

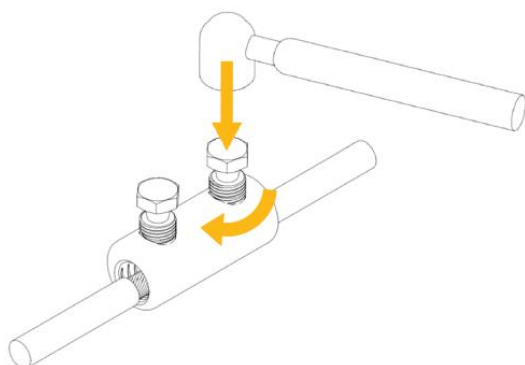
1.



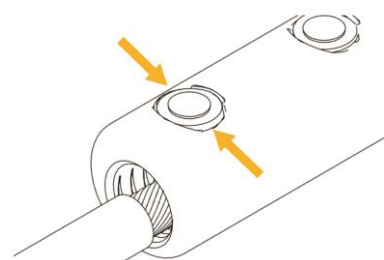
2.



3.

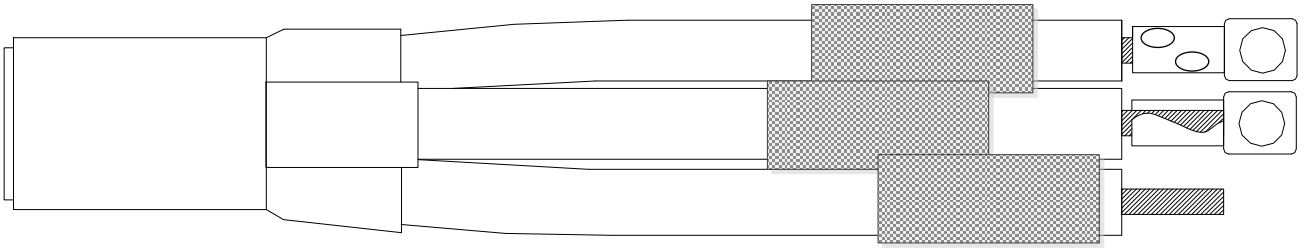


4.



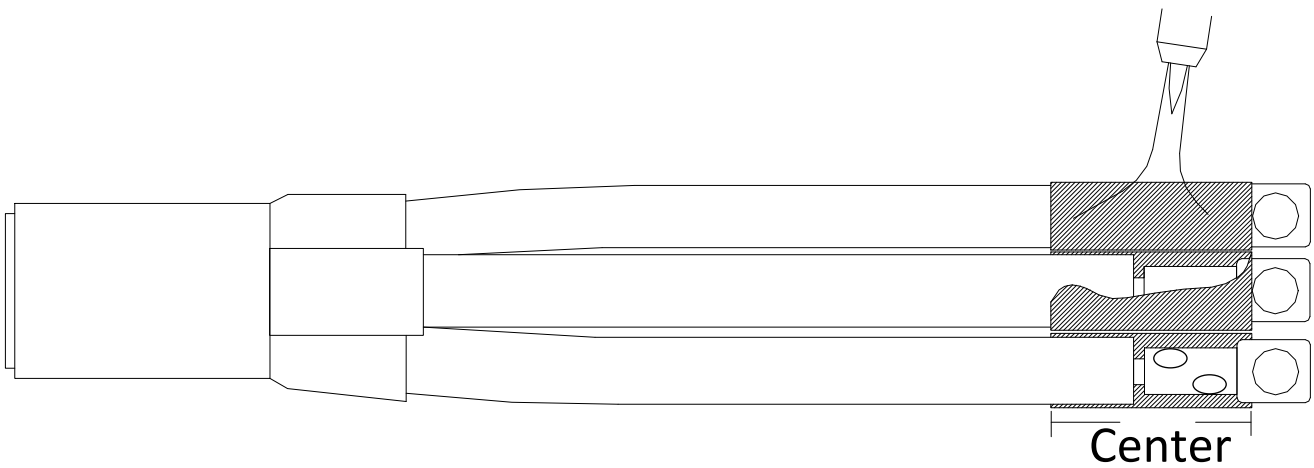
Suitable for aluminum or copper conductors. Check the suitability of lug/connector according to conductors size mm² given in the table.

1. Strip insulation of conductor to fit into barrel of connector. Clean and brush conductor before installation.
2. Place conductor into barrel. Bolts are covered with special grease, do not remove the grease.
3. Fasten bolts steadily by the hand first and with proper tool after - until the heads shear off.
4. Bolts have to be rounded if the surface is not flush with lugs body or sharp edges appear.



Position lug sleeves centrally over core and lug.

Using a soft yellow flame shrink form sleeve middle, working outwards.



Position lug sleeves centrally over core and lug.

Using a soft yellow flame shrink form sleeve middle, working outwards.

Termination is completed.

ALLOW TO COOL BEFORE MOVING OR APPLYING LOAD