

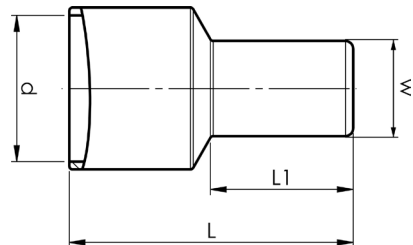


# ELPRESS®

## Product Datasheet

### End connector sleeves fully insulated

### 1 - 6 mm<sup>2</sup>



mm <sup>2</sup> (Cu)	AWG Cu	Name	d (mm)	L	L1	s	Tool	Insulation material	Easy Entry	Material	Pcs/pack	Tool
1-3	18-13	A2500E	6,4	15,2	8	8	GSA0760	PA	Yes	Brass, Cu/ Sn	100	GSA0760
4-6	12-10	A4600E	9,2	17,7	9	9	GSA0760	PA	Yes	Brass, Cu/ Sn	100	GSA0760

s = strip length



# ELPRESS®