

CAUTION:

Read instructions thoroughly and completely prior to beginning installation.

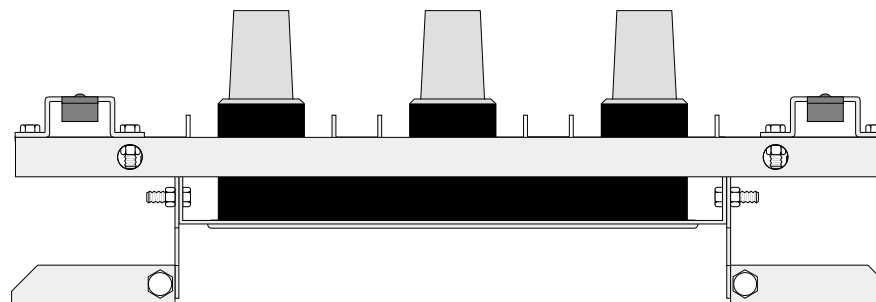
Installation Instructions

(K)1501J3-U-8

Three-point Junction

IS 1501J3-U-8 - E
Page 1 of 4 - August 1997

Supersedes edition of September 1992



The ELASTIMOLD (K)1501J3-U-8 junctions are designed to provide a means of apparatus changeout, sectionalising, tapping or looping.

The following products mate with the junction : (K)158LR elbow connectors (required bail restraint : 150BA-B1)

(K)151SR straight receptacle (required bail restraint : 151BA-CS 180)

(K)152SR straight receptacle (required bail restraint : 151BA)

(K)150T tee connector (required bail restraint : 150TB-1)

(K)150DR dead-end receptacle (required bail restraint : 152BA).

The (K)1501J3-U-8 junctions are designed for universal mounting on flat surfaces. The mounting angle of the junction is adjustable from 0° through 45° above or below the horizontal in 15° increments.

CONTENTS :

1 x EPDM three-point junction with bracket equipped with parking stands for (K)151SOP stand-off plugs and 250GP earthing plug

2 x Slotted bracket

2 x Universal mounting bracket

1 x Set of screws, nuts and washers

3 x Shipping cap

- Lubricant & wipers

- Installation instructions

NOTE : the bail restraints for mating parts must be ordered separately.

90146E-R/1-B

This product should be installed only by competent personnel trained in good safety practices involving high voltage electrical equipment. These instructions are not intended as a substitute for adequate training or experience in such safety practices. These instructions do not attempt to provide for every possible contingency.

Failure to follow these instructions could result in damage to the product and serious or fatal injury.

IMPORTANT : Cable and associated apparatus must be de-energised, locked out, and tagged prior to product installation.

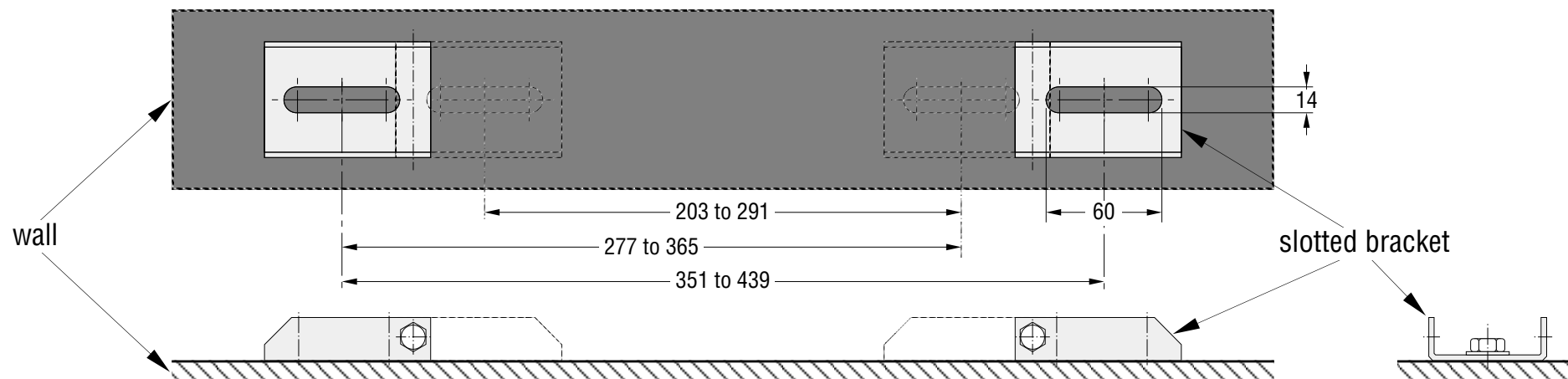
Euromold
a Nexans company

EUROMOLD N.V.

Zuid III - Industrielaan 12

B-9320 EREMBODEGEM-AALST – BELGIUM

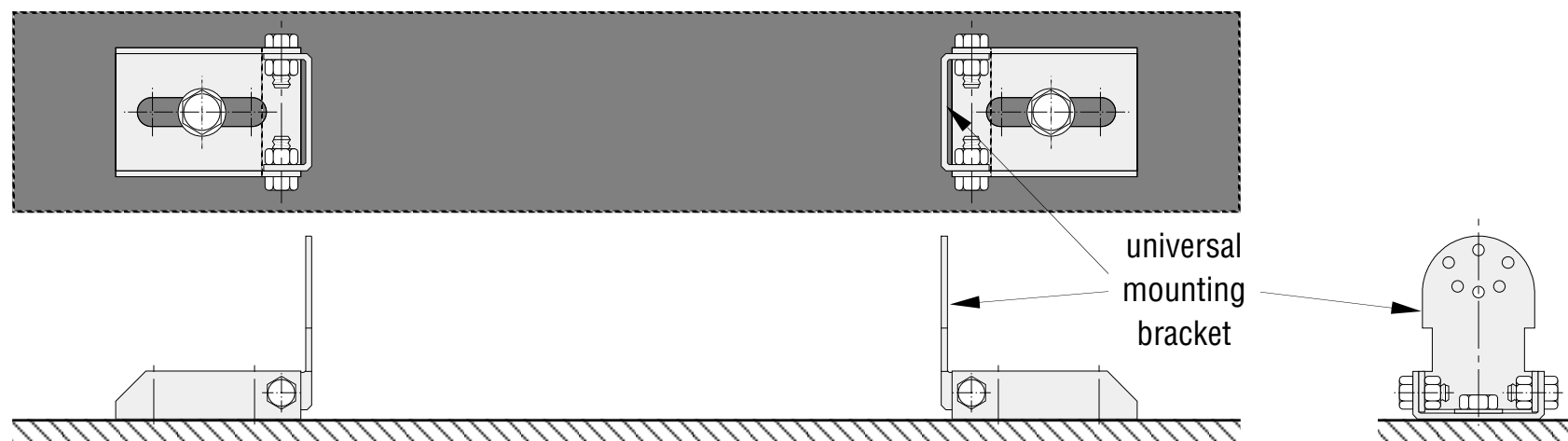
Tel: +32 (0)53/85 02 11 - Telefax: +32 (0)53/83 10 13



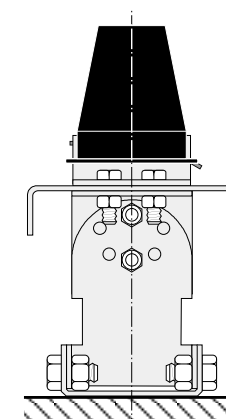
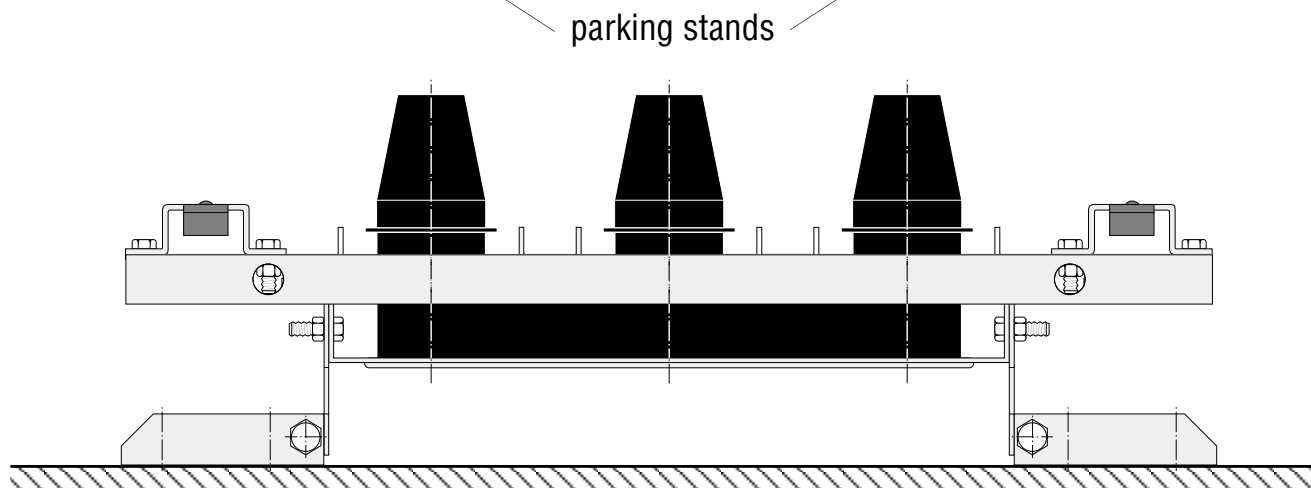
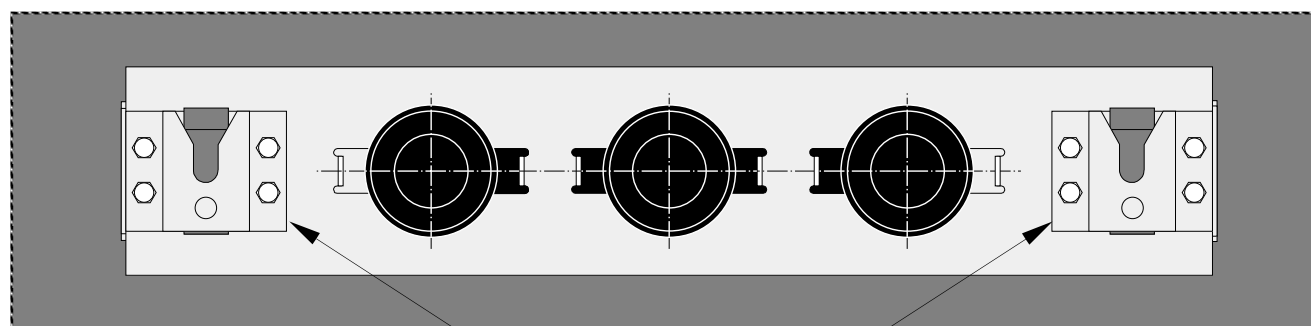
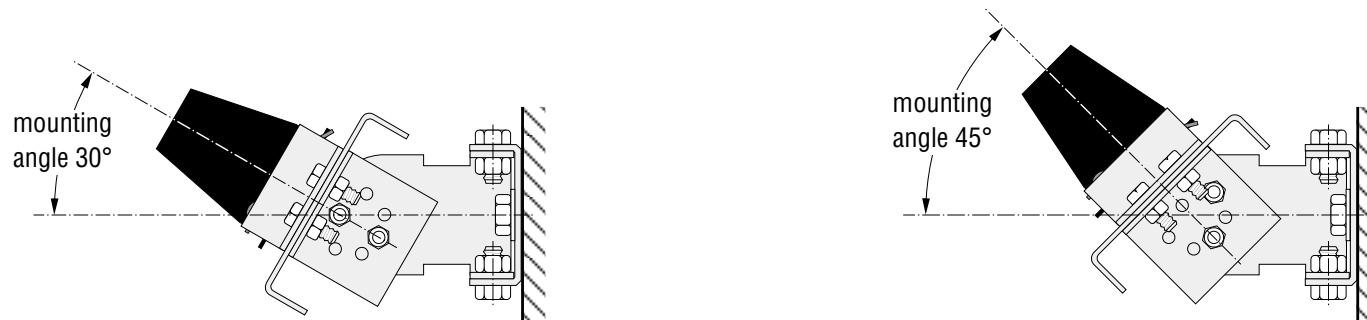
1. Remove slotted mounting brackets from assembly and attach to wall with suitable fasteners.

NOTE : One or both of the mounting brackets can be reversed to change the distance required between bolt centres.

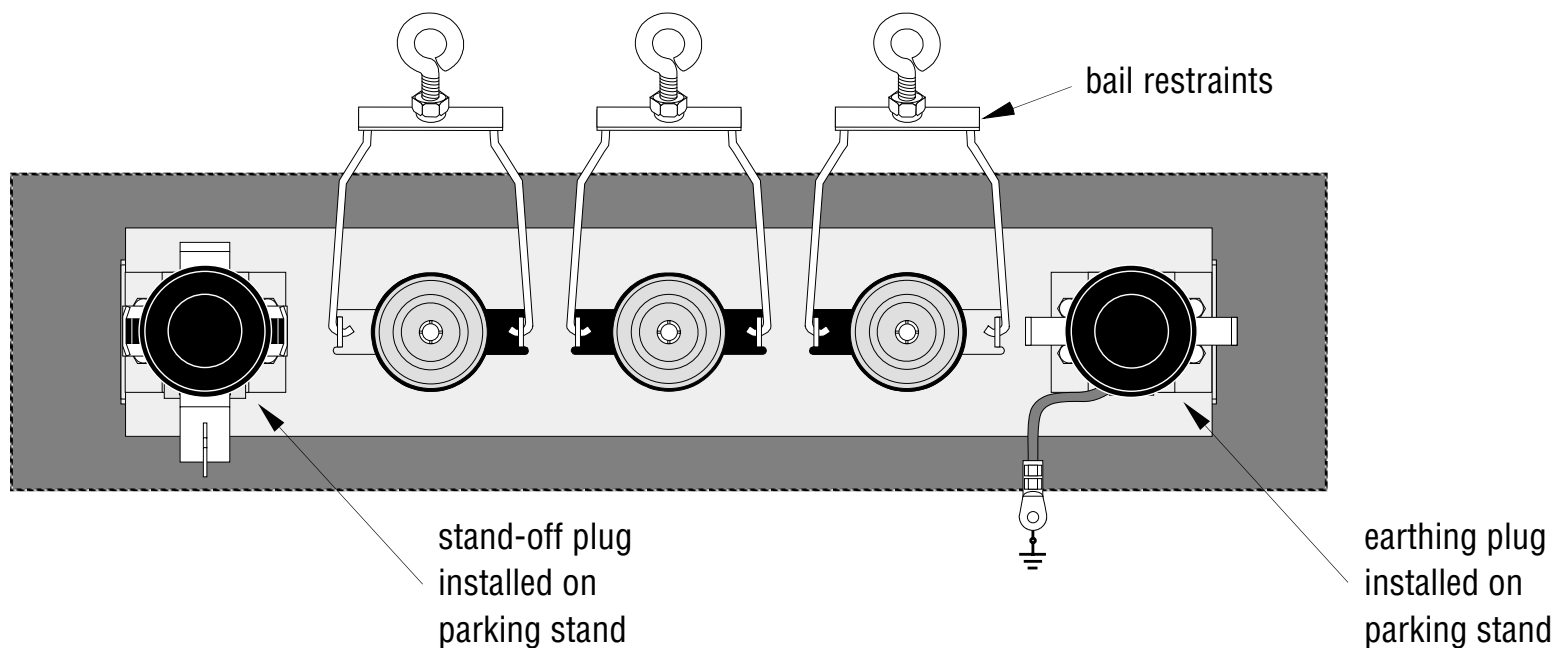
The mounting bracket slot length provides the dimensional ranges between bolt centres as indicated in the diagram.



2. Install the universal mounting brackets on to the slotted brackets.



3. Determine the desired mounting angle and the desired direction of the slotted bracket.
4. Assemble junction to the universal mounting brackets and tighten all bolts securely to ensure no movement during operation. Make sure that the parking stands are in an upright position as shown.



5. INSTALLATION OF THE MATING PARTS :

- If required Install the stand-off plug on one of the parking stands or the earthing plug on the copper earth plate.
- Connect the earthing lead to the system earth.
- Remove the shipping caps from the interfaces.
- Insert bail restraints of the mating part into the bail tabs (bail restraints for elbow connectors are shown).

IMPORTANT : Before installing the accessory make sure the interfaces are clean.

- Lubricate interfaces of junction and mating parts.
- Push mating part on to the junction and install the bail restraint.