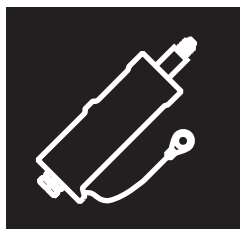


CAUTION : Read instructions thoroughly and completely prior to beginning installation.

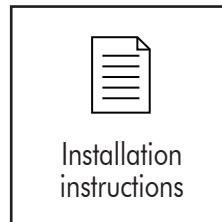
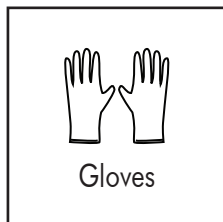
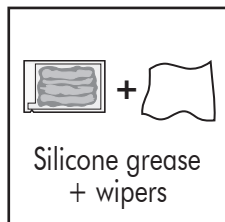
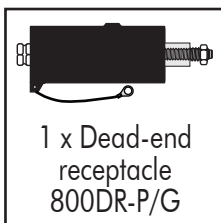
### Installation Instructions - Dead-end Receptacle



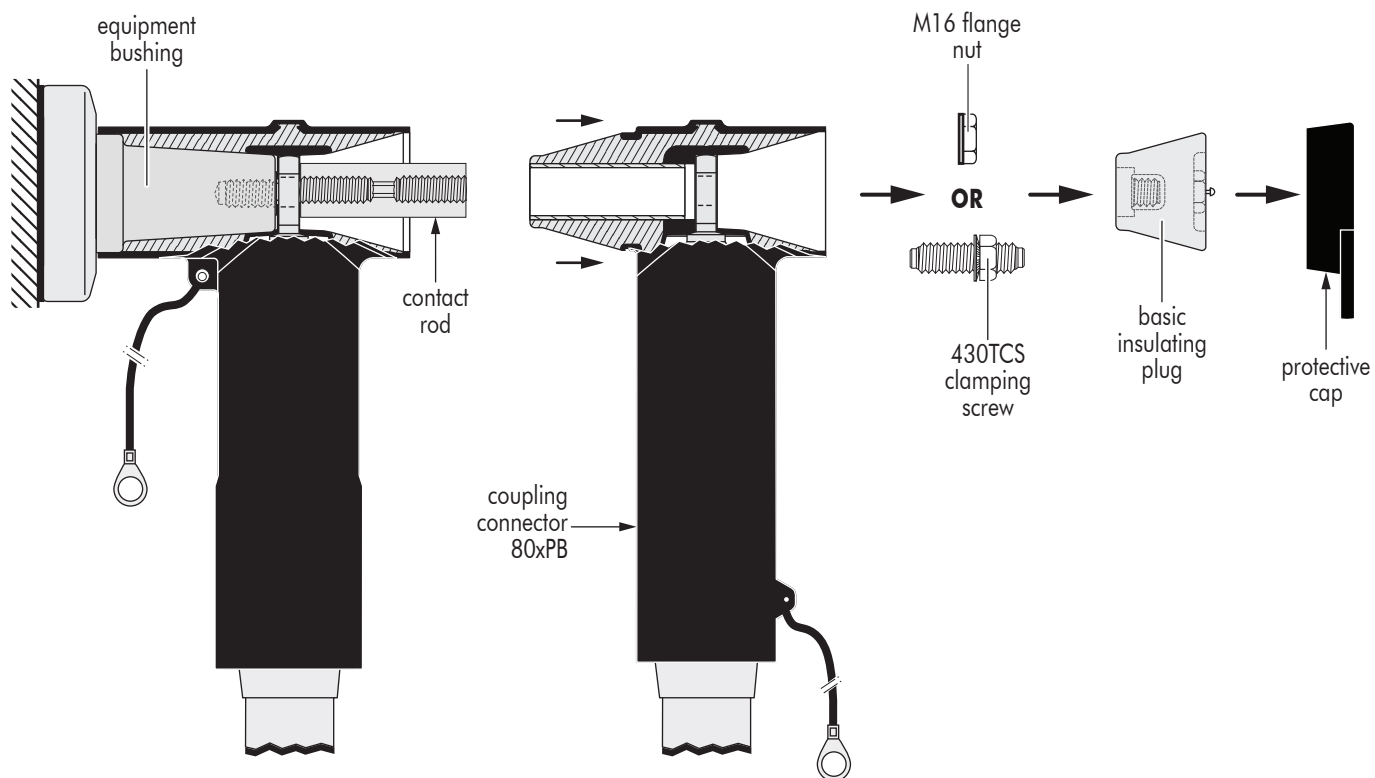
**P800DR-P/G**  
42 kV

This accessory serves to temporarily insulate the male interface of a coupling connector type 80xPB, for instance while doing voltage tests on cables equipped with such connector.

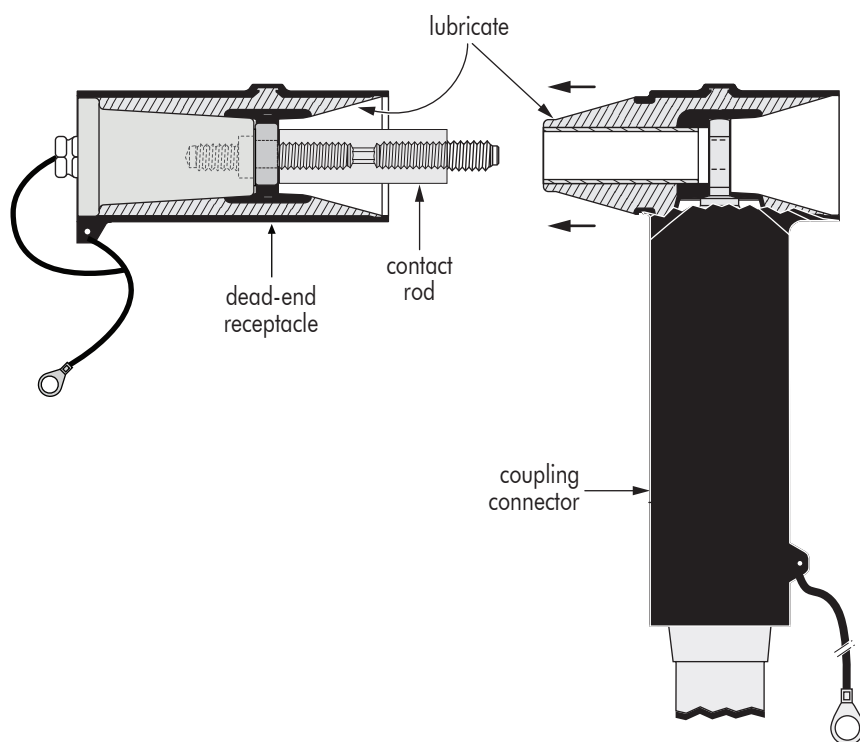
#### Contents:



## TYPICAL CONFIGURATION

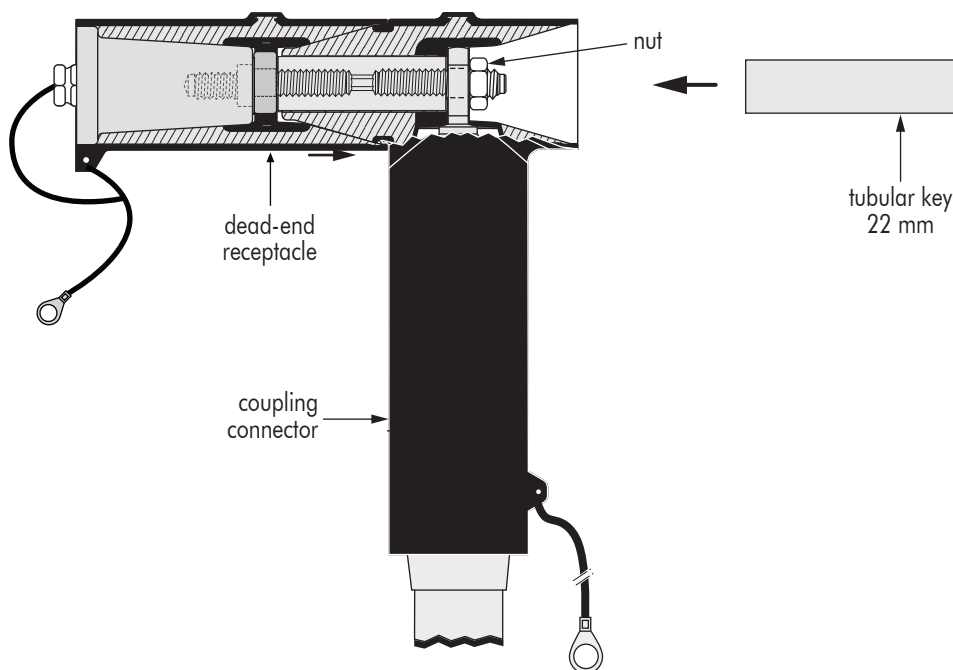


- 1** Remove protective cap.
- 2** Remove the basic insulating plug. Use a wrench with 22 mm socket.
- 3** Remove the 430TCS clamping screw or flange nut. Use a wrench with a 22 mm socket and an extension.  
Put the items aside in a clean and safe place for later re-use.
- 4** Pull the coupling connector free from its counterpart.

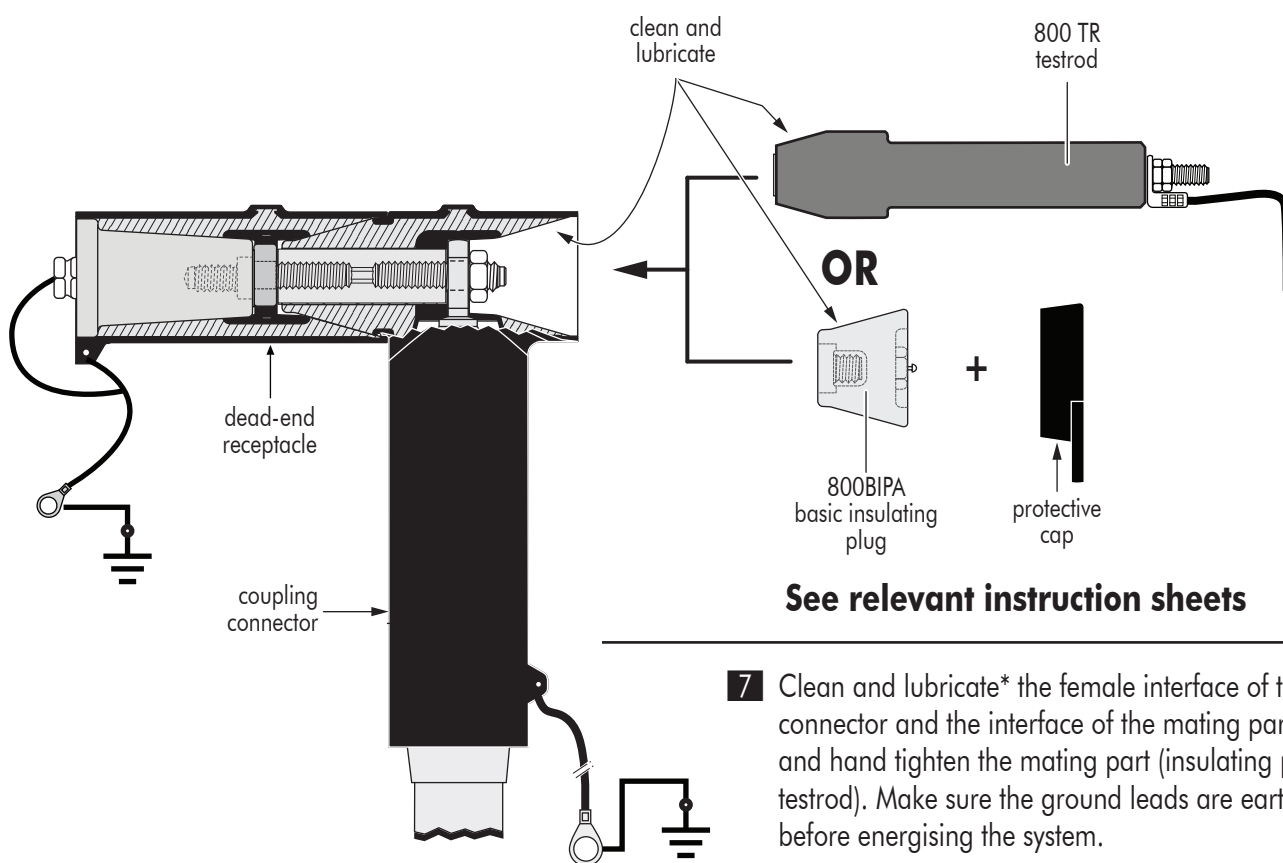


- 5** Clean and lubricate\* the interfaces of both connector and dead-end receptacle.

\* USE ONLY THE SILICONE LUBRICANT SUPPLIED



- 6** Push the dead-end receptacle on the male interface of the connector and screw the nut on the threads protruding in the female interface. Hand tighten the nut using a tubular key 22 mm.



**See relevant instruction sheets**

- 7** Clean and lubricate\* the female interface of the connector and the interface of the mating part. Insert and hand tighten the mating part (insulating plug or testrod). Make sure the ground leads are earthed before energising the system.

**\* USE ONLY THE SILICONE LUBRICANT SUPPLIED**

#### IMPORTANT NOTES :

- In order to achieve the correct applied torque ensure that there is no lubricant on the threaded parts.
  - Do not allow hydrocarbon oils or solvents to contaminate the E.P.D.M. rubber.
- In the event of contamination, wipe the surface clean with a dry cloth.

# Euromold

**Nexans Network Solutions NV - div. EUROMOLD**

Zuid III - Industrielaan 12  
B-9320 EREMBODEGEM-AALST – BELGIUM  
Tel: +32 (0)53/85 02 11 – Telefax: +32 (0)53/83 10 13  
sales.euromold@nexans.com