



AK 16 AS SAK MS (308 411)

- Space-saving
- Two fixing screws for conductor included

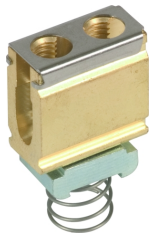
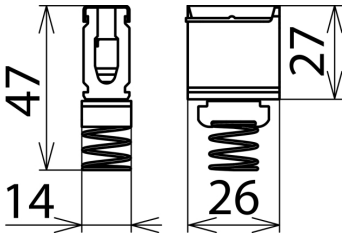
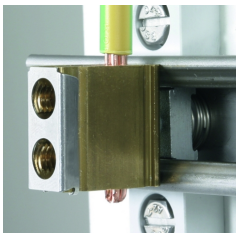


Figure without obligation



Dimension drawing AK 16 AS SAK MS

For connecting equipotential bonding conductors to AS SAK 1000 V2A anchor bars.

Type	AK 16 AS SAK MS
Part No.	308 411
Cross-sectional area, solid	16 mm <sup>2</sup>
For mounting on	anchor bars
Approvals	ETL 10/PB 301/97
Weight	56 g
Customs tariff number	85369085
GTIN	4013364070578
PU	5 pc(s)

We reserve the right to introduce changes in performance, configuration and technology, dimensions, weights and materials in the course of technical progress. The figures are shown without obligation.