

# COLD WEATHER GLOVE

Maximum dexterity in a wind and water resistant work glove for colder conditions.

**2YEAR**  
WARRANTY

**DIMENSIONS** 11 in x 5 in x 1.5 in (279 mm x 127 mm x 38 mm)

**WEIGHT** .31 lbs (.14 kg)

Weight & dimensions based on medium size gloves

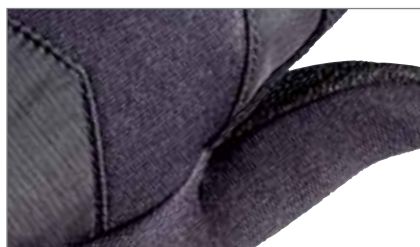


### KEY FEATURES

- Abrasion / Water / Perspiration resistant leather palm
- Extra grip and durability in palm and fingers in both wet and dry conditions
- Digitally textured leather palm
- Extra sensitivity for index finger; lining only up to first knuckle
- Neoprene padded thumb and knuckles for extra flexibility
- Lined with Thinsulate™ Bemberg; warmth without bulk
- Concealed interior seam stitching enhances durability especially around vulnerable finger tips
- Protects from abuse such as cold, abrasion and impact



**WIND AND WATER RESISTANT BACK**  
*Lined with Thinsulate™.*



**SNAP**  
*Soft Neoprene Spot/Sweat Absorption Pad.*



**SEAMLESS PALM**  
*Designed for maximum dexterity.*

### COLORS



BLACK

	SKU	NSN
XS	CW05-07	8415-01-541-0055
S	CW05-08	8415-01-541-0056
M	CW05-09	8415-01-541-0057
L	CW05-10	8415-01-541-0058
XL	CW05-11	8415-01-541-0059
XXL	CW05-12	8415-01-541-0060

### MATERIALS

Polyamide woven top → Thinsulate™ lining → Leather palm/fingers → Neoprene thumb and knuckles → Hook-and-Loop wrist closure → Polyamide cuff cord loop

Thinsulate™ is a registered trademark of 3M Corporation.