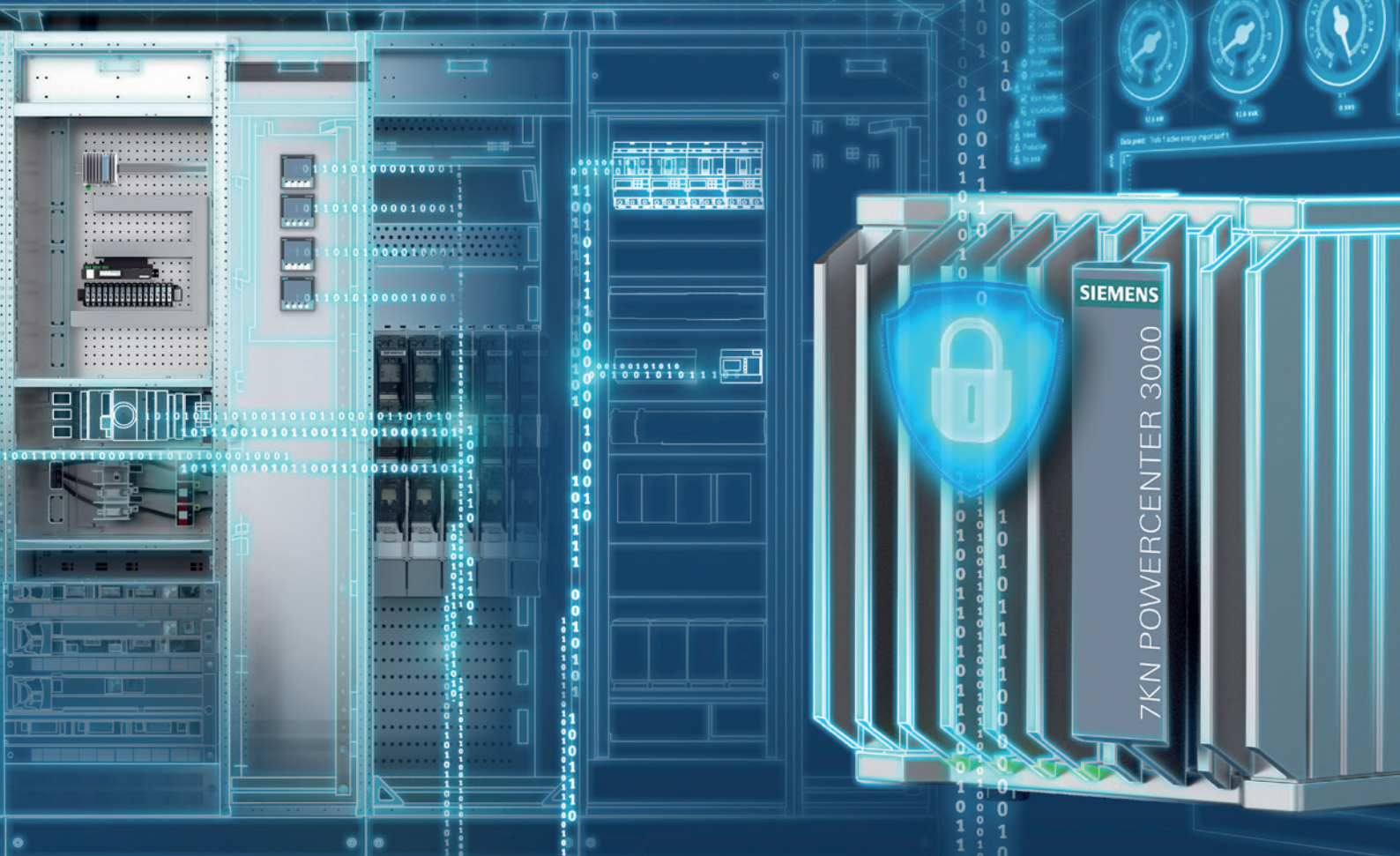


SIEMENS



SENTRON

Power Monitoring Made Simple

Catalog
LV 14

Edition
11/2019

[siemens.com/powermonitoring](https://www.siemens.com/powermonitoring)

Making sure power makes its way

Consistent, safe and intelligent low-voltage power distribution and electrical installation technology

Whether in industry, infrastructure or buildings: Each environment depends on a reliable power supply.

Which is why products and systems featuring maximum safety and optimum efficiency are in demand. This comprehensive portfolio for low-voltage power distribution and electrical installation technology covers every requirement – from the switchboard to the socket outlet.

We are there when you need us

Your personal contact can be found at
www.siemens.com/lowvoltage/contact

Catalog LV 14 · 11/2019

You will find the latest edition and all future editions in the Siemens Industry Online Support at
www.siemens.com/lowvoltage/catalogs

Refer to the Industry Mall for current prices
www.siemens.com/industrymall

The products and systems listed in this catalog are developed and manufactured using a certified quality management system in accordance with DIN EN ISO 9001:2008.

Technical data

The technical specifications are for general information purposes only. Always heed the operating instructions and notices on individual products during assembly, operation and maintenance.

All illustrations are not binding.

© Siemens 2019

Power Monitoring Made Simple

Measuring and Monitoring

Introduction	I/2
Measuring Devices, Power Monitoring and Digitalization Solutions	1/1
Appendix	A/1

I

1

A

Clickable Article Numbers

Direct forwarding to the individual products in the Industry Mall by clicking on the Article No. in the catalog or by entering this web address incl. Article No.

www.siemens.com/product?Article No.

new Search Function

Search for new products by entering new in the text field of the search function



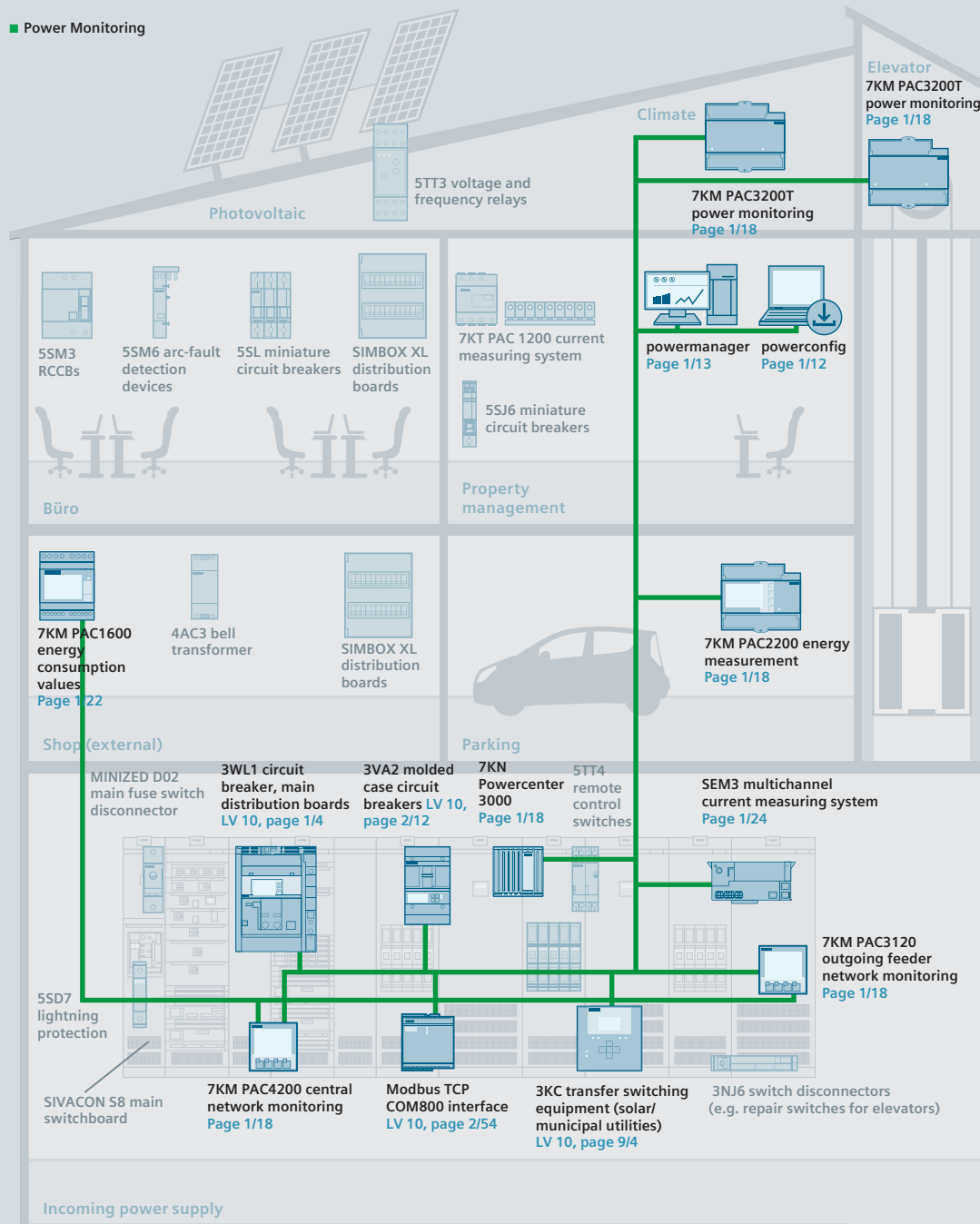
Catalog LV 10 - 10/2019

You can find the entire product spectrum for low-voltage power distribution and electrical installation technology in catalog LV 10 - 10/2019 at

www.siemens.com/lowvoltage/catalogs

Examples of digitalization in infrastructure

Power Monitoring



Cloud-based analysis



Condition Monitoring



Predictive maintenance



Power monitoring

On premises



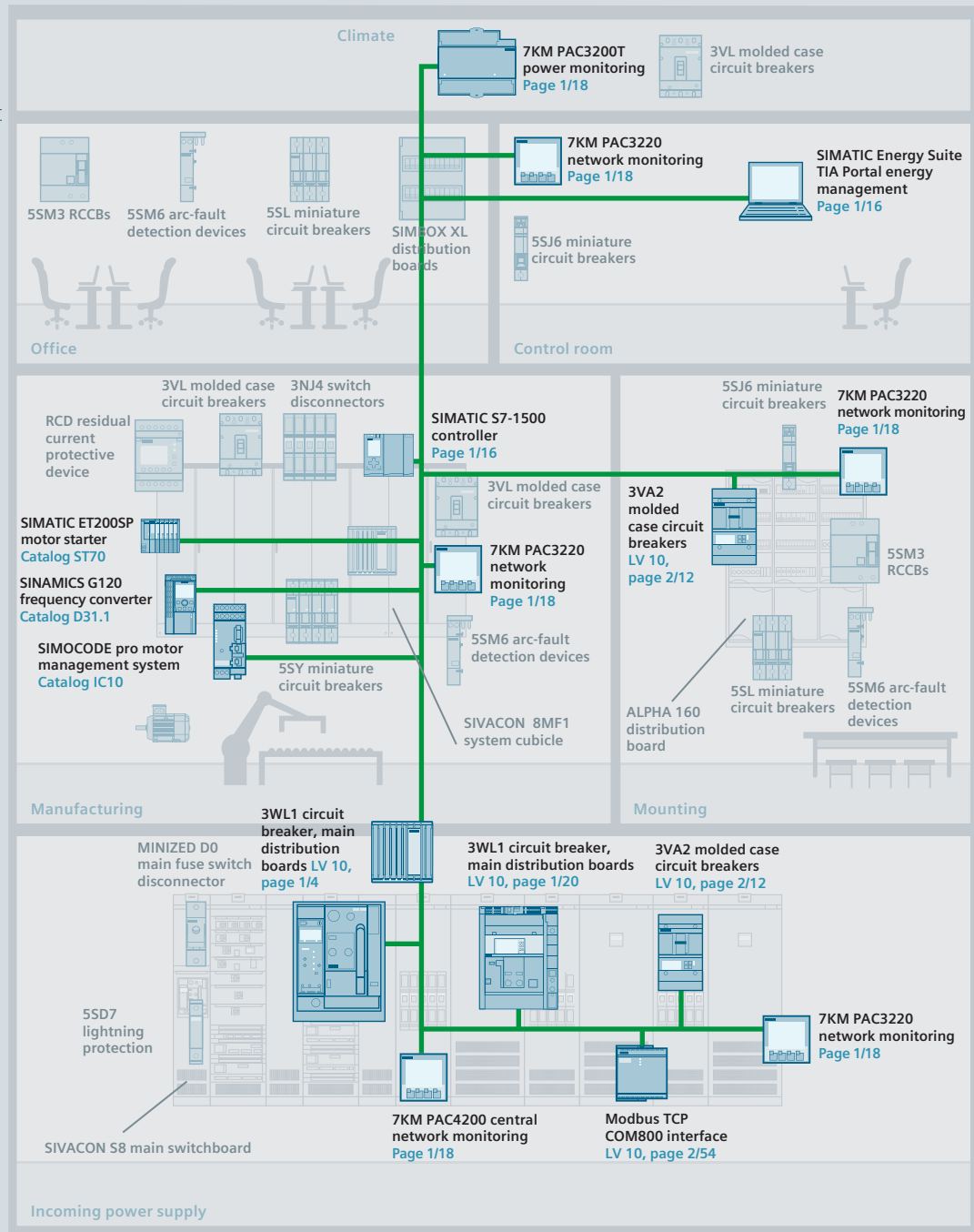
Measuring, evaluating and controlling with powermanager / Designo CC power monitoring software

Stand-alone



Central visualization of measured values, states and alarms via integrated web servers in measuring devices and Powercenter 3000

Examples of digitalization in industry



Introduction to the topic of digitalization and Industry 4.0

In industrial automation, the demand for communication capability, data transparency and flexibility is growing constantly. To enable industrial switchgear technology to meet this demand, the use of bus systems and intelligent switching devices is unavoidable.

Digitalization

Switching, protection and measuring devices in power distribution systems can display important information on local visualization via integrated communication, e.g. in powercenter, or transmit it to energy data management systems (EDMS), e.g. powermanager, as well as to cloud systems and applications.

- Diagnostics management
- Fault management – SMS alarm
- Maintenance management – predictive maintenance
- Cost center management – MID

1. Visualization and plant transparency (HMI)



- Greater operational reliability thanks to remote access to the plant.
- Plant visualization for central and simple access to all device information.

2. Digital documentation



- Uniform access to digital data and documentation.
- Provision of extensive CAx data for systems and components during planning and operation.
- Support in planning and process creation using SIMARIS planning tools, product and system configurators.

3. Power monitoring



- Fulfilling the ISO 50001 by detecting and transparently presenting the energy flows within energy distribution.

4. Optimization and retrofit



- Retrofitting solutions such as SEM3 offer a simple option for integrating energy monitoring into existing systems.
- Energy monitoring and plant transparency help you efficiently plan plant expansion.

5. Maintenance management



- Maintenance support, even remotely, by transparently presenting the status of a switchgear and controlgear assembly.

6. Emergency management

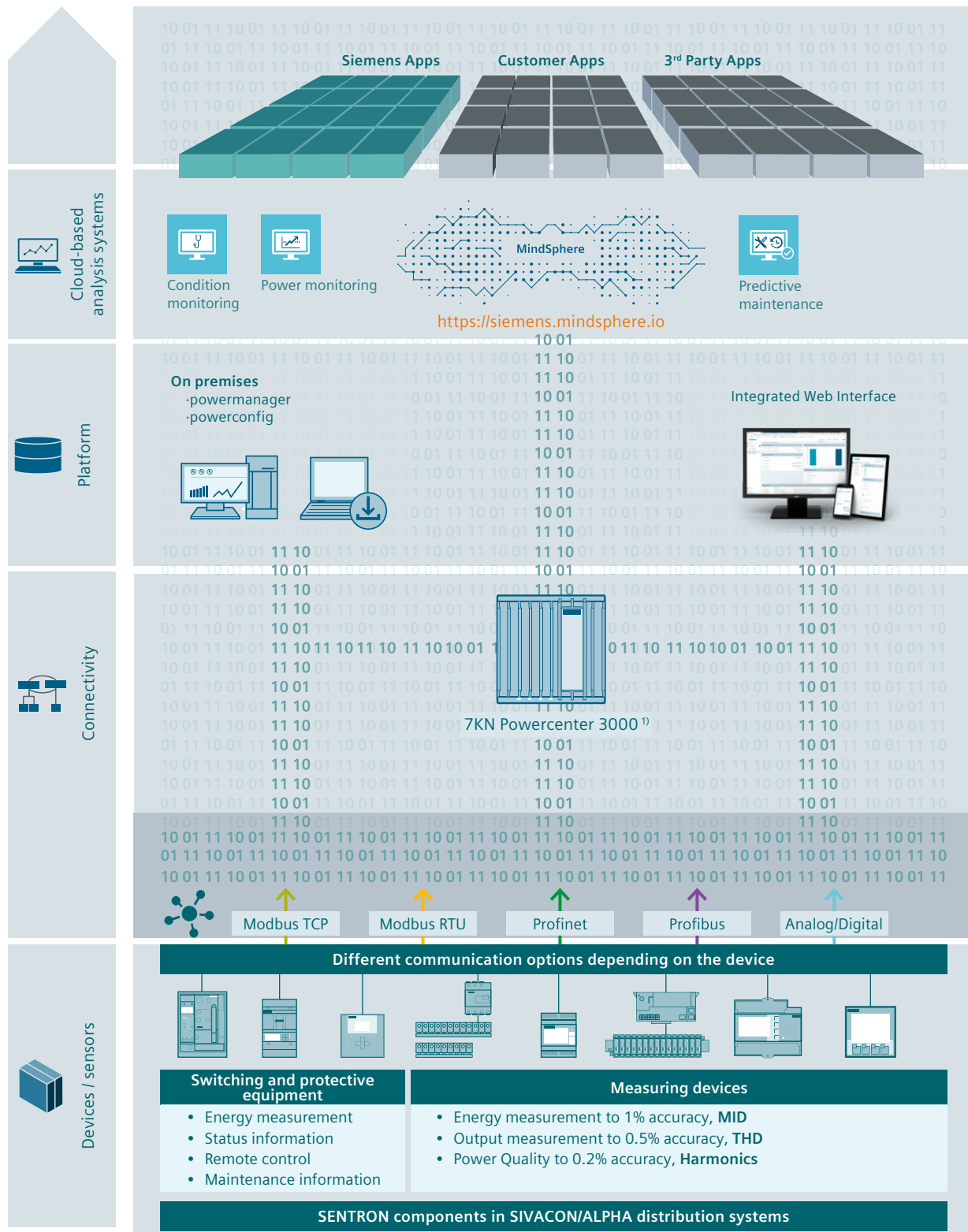


- Quick error localization which therefore leads to a minimization of outage times.

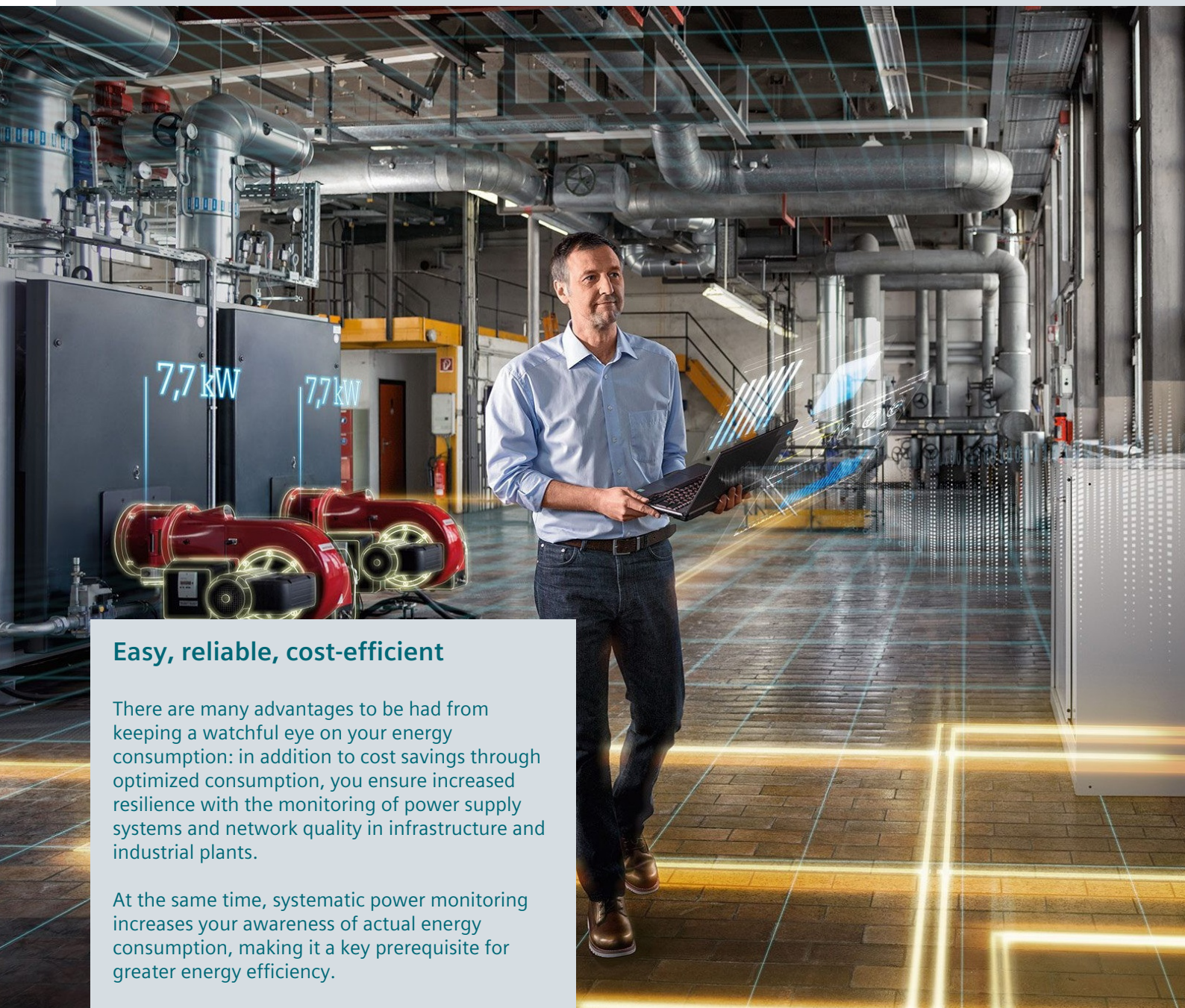
7. Security



- Protection from unauthorized access and manipulation to switchgear and controlgear assemblies and devices ensures integrity, availability and confidentiality.



¹⁾ Modbus TCP



Easy, reliable, cost-efficient

There are many advantages to be had from keeping a watchful eye on your energy consumption: in addition to cost savings through optimized consumption, you ensure increased resilience with the monitoring of power supply systems and network quality in infrastructure and industrial plants.

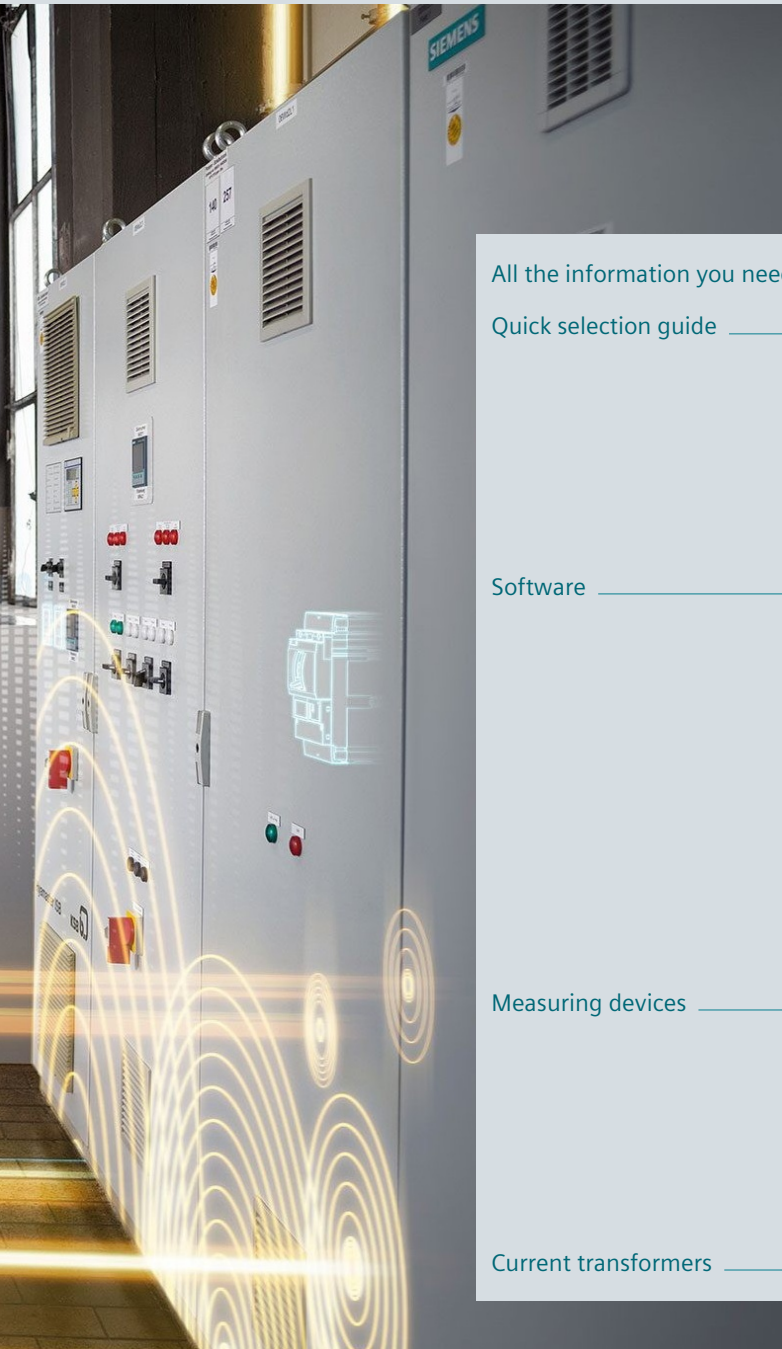
At the same time, systematic power monitoring increases your awareness of actual energy consumption, making it a key prerequisite for greater energy efficiency.

Integration into open IoT operating systems such as MindSphere results in even greater optimization potential.

What is more, with a power monitoring system you lay the foundation for regular energy audits and a corporate energy management system according to ISO 50001 and ISO 50003.

Measuring Devices, Power Monitoring and Digitalization Solutions

1



All the information you need	1/2
Quick selection guide	1/4
Power monitoring	1/4
Hardware components	1/6
Accessories	1/8
Software	1/10
Software	1/12
powerconfig	1/12
powermanager V3	1/13
powermanager V4 new	1/14
7KN Powercenter new	1/15
SIMATIC Energy Suite	1/16
SIMATIC Modbus/TCP SENTRON PAC	1/16
PAC/3WL/3VA SIMATIC PCS 7 library	1/17
Measuring devices	1/18
7KM PAC measuring devices	1/18
7KT PAC measuring devices	1/22
SEM3 multichannel current measuring system	1/24
Time and pulse counters	1/26
Current transformers	1/28

A multitude of additional information ...

Information + ordering

All the important things at a glance

Information to get you started

For information about measuring devices, power monitoring and digitalization solutions, please visit our websites

www.siemens.com/powermonitoring

www.siemens.com/lowvoltage/digitalization

Contact persons in your region

We are there when you need us

You can find your local contacts at

www.siemens.com/lowvoltage/contact

Your product in detail

The Siemens Industry Online Support portal provides comprehensive information

www.siemens.com/lowvoltage/product-support

- Technical basic information – SENTRON power monitoring and digital solutions ([109769851](#))
- Brochure – Reliable, sustainable, and efficient – TÜV-certified power monitoring system in accordance with ISO 50001 ([109744679](#))
- Brochure – SENTRON portfolio for power monitoring ([109744725](#))

The relevant tender specifications can be found at

www.siemens.com/lowvoltage/tenderspecifications

Siemens YouTube channel

Our video range

- Power monitoring (general) bit.ly/2lZ9QqC

Everything you need for your order

Refer to the Industry Mall for an overview of your products

- Measuring devices and power monitoring sie.ag/2kTH9Lz
- Digitalization solutions sie.ag/2olliNi
- Library for SIMATIC sie.ag/2kpbwcs
- powermanager / powerconfig sie.ag/2kTJjuF

Direct forwarding to the individual products in the Industry Mall by clicking on the Article No. in the catalog or by entering this web address incl. Article No.

www.siemens.com/product?Article No.

... can be found in our online services

Commissioning + operation

Configuration software

powerconfig

The combined commissioning and service tool for communication-capable measuring devices and circuit breakers from the SENTRON family.
www.siemens.com/powerconfig

Your product in detail

The Siemens Industry Online Support portal provides detailed technical information
www.siemens.com/lowvoltage/product-support

- Operating instructions
- Certificates

Engineering data for CAD or CAE systems are available in the CAx Download Manager at
www.siemens.com/lowvoltage/cax

The fast track to the experts

Competent expert advice on technical questions with a wide range of demand-optimized services for all our products and systems.

Assistance with technical queries is provided at
www.siemens.com/lowvoltage/support-request

We offer a comprehensive portfolio of services. You can find your local contacts at
www.siemens.com/lowvoltage/contact

You can find further information on services at
www.siemens.com/service-catalog

Manuals

Manuals are available for downloading in Siemens Industry Online Support at
www.siemens.com/lowvoltage/manuals

- Configuration manual measuring devices and power monitoring (45315973)
- Equipment manual 7KT PAC1600 energy meter (109759827)
- Equipment manual 7KT PAC1600 multimeter (109760293)
- System manual 7KT multichannel current measuring system (109483442)
- Equipment manual PAC2200 measuring device (109746835)
- Equipment manual SENTRON PAC3200 power monitoring device (26504150)
- Equipment manual PAC3200T measuring device (109746833)
- System manual SENTRON PAC4200 power monitoring devices (34261595)
- Equipment manual PAC3100 measuring device (37881976)
- Equipment manual SENTRON PAC5100/5200 7KM5212/5412 (109477872)
- Equipment manual 7KM PAC3120 and 7KM PAC3220 (109767307)
- Communication manual SENTRON PAC5100/5200 7KM5212/5412 (109477870)
- System manual – 3VA communication IEC/UL (98746267)
- SEM3™ – Embedded Micro Metering Module™ (109748928)

Training and tutorials

Our training courses can be found at
www.siemens.com/sitrain-lowvoltage

- Power monitoring with SENTRON (WT-LVAEM)
- Energy management – Basic training (LV-EMSENTB)
- Energy management – Training for experts (LV-EMSENTE)
- Communication with SENTRON components (LV-COM)

Technical overview of measuring devices, power monitoring and digitalization solutions



The fast way to get you to our online services

This page provides you with comprehensive information and links on measuring devices, power monitoring and digitalization solutions

www.siemens.com/lowvoltage/product-support (109764480)

Power monitoring

Software

Local monitoring systems



Functions for power monitoring

Configuring / commissioning / parameterizing	–	–	■	■	–
Displaying current data	■	■	■	■	■
Displaying / evaluating current / historical values	■	■	■	■	■
Prepared reports	–	–	–	–	■
Customized reporting	–	–	–	–	■
Data analysis in the cloud					■

Additionally for energy management

Switching loads on and off	–	–	–	–	□
----------------------------	---	---	---	---	---

IoT data platform

7KN Powercenter 3000	■	–	–	■	■
----------------------	---	---	---	---	---

Measuring devices and circuit breakers

Measuring devices for industrial applications



7KM PAC2200
7KM PAC3200T
7KM PAC3100
7KM PAC3120
7KM PAC3200
7KM PAC3220
7KM PAC4200
7KM PAC5100
7KM PAC5200

■	–	–	■	■
■	–	–	■	■
–	–	–	■	■
–	–	–	■	■
–	–	■	■	■
■	–	■	■	■
■	–	■	■	■
■	–	–	■	■
■	–	–	■	■

Measuring devices for buildings and infrastructure



7KT PAC1200
7KT PAC1600
SEM3

■	■	–	■	■
–	–	–	■	■
■	–	–	■	■

Circuit breakers



3WL
3WL10 / 3VA2
3VA ETU8

–	–	■	■	■
–	–	–	■	■
–	–	■	■	■

■ Function available □ Available with limited functionality – Function not available

[illegible]

Hardware components

Industry



	7KM PAC2200	7KM PAC3200T	7KM PAC3100	7KM PAC3120 new	7KM PAC3200	7KM PAC3220 new
Installation type						
Front mounting Standard mounting rail Screw mounting	- ■ -	- ■ -	■ - -	■ - -	■ - -	■ - -
Withdrawable Fixed-mounted	- -	- -	- -	- -	- -	- -
Measuring connection						
Direct measurement	■	-	-	-	-	-
Transformer measurement	■	■	■	■	■	■
Multichannel measuring system	-	-	-	-	-	-
Suitable transformers						
Window-type current transformers	■	■	■	■	■	■
Folding transformer	■	■	■	■	■	■
Integrated transformer	-	-	-	-	-	-
Commissioning						
MID version	■	-	-	-	-	-
Max. input voltage L-L/L-N	480 V/277 V	480 V/277 V	480 V/276 V	690 V/400 V	690 V/400 V ¹⁾	690 V/400 V
Transformer connection version	x/1 A or x/5 A	x/1 A or x/5 A	x/5 A	x/1 A or x/5 A	x/1 A or x/5 A	x/1 A or x/5 A
Direct connection version	65 A	-	-	-	-	-
DC power supply unit with extra-low voltage version	-	-	-	22 ... 65 V DC	22 ... 65 V DC	22 ... 65 V DC
Single-phase counter version	■	-	-	-	-	-
Electrically isolated voltage inputs	-	-	-	-	-	-
Version without display (for web interface)	-	■	-	-	-	-
Evaluation						
Measured quantities						
Average value of measured values	■	■	-	■	-	■
Voltage, current, frequency	■	■	■	■	■	■
Power, power factor	■	■	■	■	■	■
Energy measurement						
Daily energy storage	60 days	60 days	-	60 days	-	60 days
Apparent Active Reactive energy cos φ	■ ■ ■ -	■ ■ ■ -	- ■ ■ -	■ ■ ■ -	■ ■ ■ -	■ ■ ■ -
Distortion factor THD (voltage, current)	-	■	-	■	■ (THD indication)	■
Harmonics (voltage, current)	-	-	-	-	-	-
Phase angle/phase chart	-	-	-	-	-	-
Load profile recording	-	-	-	-	-	-
Flicker acc. to IEC 61000-4-15	-	-	-	-	-	-
Monitoring functions						
Operating hours counter	■	■	-	■	■	■
Limit monitoring	-	■	-	■	■	■
Logic functions	-	■	-	■	■	■
Event log	-	-	-	-	-	-
Gateway function	-	-	-	-	-	-
Reporting acc. to EN 50160	-	-	-	-	-	-
Integrated fault recorder	-	-	-	-	-	-
Integrated communication interfaces						
Digital inputs/digital outputs	1/1	1/1	2/2	2/2	1/1	2/2
S0-Interface	■	■	■	■	■	■
M-Bus	■	-	-	-	-	-
RS485 (Modbus RTU)	■	-	■	■	-	-
Ethernet with Modbus TCP	■	■	-	-	■	■
BACnet	-	-	-	-	-	-
More information						
	See page 1/18	See page 1/18	See page 1/18	See page 1/18	See page 1/18	See page 1/18

¹⁾ For devices with AC/DC wide-voltage power supply unit

Industry

Buildings and infrastructure

Circuit breakers



**7KM
PAC4200**

**7KM
PAC5100**

**7KM
PAC5200**

**7KT
PAC1200**

**7KT
PAC1600**

SEM3

3WL

**3WL10 /
3VA27**

3VA ETU8

■ - -	■ ■ -	■ ■ -	- ■ -	- ■ -	- - ■	- - -	- - -	- - -
- -	- -	- -	- -	- -	- -	■ ■	■ ■	- ■
-	-	-	■	■	-	-	-	-
■	■	■	■	■	-	-	-	-
-	-	-	■	-	■	-	-	-
■	■	■	■	■	■	-	-	-
■	■	■	■	■	■	■	■	■
-	-	-	-	■	-	-	-	-
690 V/400 V ¹⁾ x/1 A or x/5 A	690 V/400 V x/1 A or x/5 A	690 V/400 V x/1 A or x/5 A	400 V/230 V x/5 A 40/63 A	400 V/230 V x/5 A 63/80 A	480 V/277 V 50...1200 A/0.1 A	690 V/400 V integrated	690 V/400 V integrated	690 V/400 V integrated
22 ... 65 V DC	-	-	-	-	-	24 V DC	24 V DC	24 V DC
-	-	-	■	■	■	-	-	-
-	■	■	-	-	-	-	-	-
-	■	■	■	-	■	-	-	-
■	-	-	-	-	-	■	-	-
■	■	■	■	■	■	■	■	■
■	■	■	■	■	■	■	■	■
-	-	-	-	-	-	-	-	-
■ ■ ■ ■	■ ■ ■ ■	■ ■ ■ ■	- ■ ■ -	■ ■ ■ -	■ ■ ■ ■	■ ■ ■ ■	■ ■ ■ ■	■ ■ ■ ■
■	■	■	-	-	-	■	-	■
2nd to 64th	2nd to 40th	2nd to 40th	-	-	-	2nd to 29th	-	-
■	■	■	-	-	-	-	-	-
■	-	■	-	-	■	■	■	■
-	-	■	-	-	-	-	-	-
■	-	-	-	■	-	■	-	■
■	■	■	-	■	-	■	■	■
■	■	■	-	-	■	-	-	-
■	■	■	-	-	-	■	■	■
■	-	-	-	-	-	-	-	-
■	-	■	-	-	-	-	-	-
> 4000 events	■	■	-	-	■	■	■	■
■	-	-	-	-	-	-	-	-
-	-	■	-	-	-	-	-	-
2/2	0/2	0/2	-	1/1	2/1	■	■	■
■	-	-	-	■	-	-	■	■
-	-	-	-	■	-	-	-	-
-	-	-	-	■	■	■	■	■
■	■	■	■	-	■	■	■	■
-	-	-	-	-	■	-	-	-
See page 1/18	See page 1/18	See page 1/18	See page 1/22	See page 1/22	See page 1/24	See LV 10, page 1/4	See LV 10, page 1/4 and 2/12	See LV 10, page 2/12

Accessories

Communication modules



**7KM Switched Ethernet
PROFINET / Modbus TCP**

7KM PROFIBUS DP

**7KM RS485
Modbus RTU**

Industry

	7KM PAC2200	—	—	—
	7KM PAC3200T	—	—	—
	7KM PAC3100	—	—	—
	7KM PAC3120 new	—	—	—
	7KM PAC3200	■	■	■
	7KM PAC3220 new	■	■	■
	7KM PAC4200	■	■	■
	7KM PAC5100	—	—	—
	7KM PAC5200	—	—	—

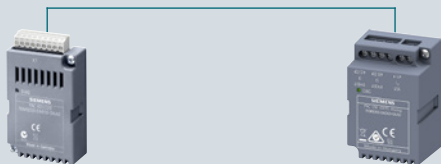
Buildings and infrastructure

	7KT PAC1200	—	—	—
	7KT PAC1600	—	—	—
	SEM3	—	—	—

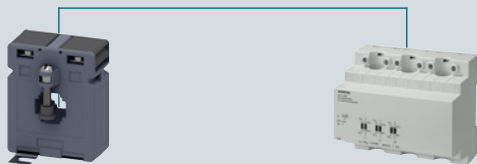
Circuit breakers

	3WL	—	—	—
	3WL10 / 3VA27	—	—	—
	3VA ETU8	■	■	■

Expansion modules



Current transformers



7KM PAC
4DI/2DO

7KM PAC
I(N), I(Diff), analog

4NC
Current transformers

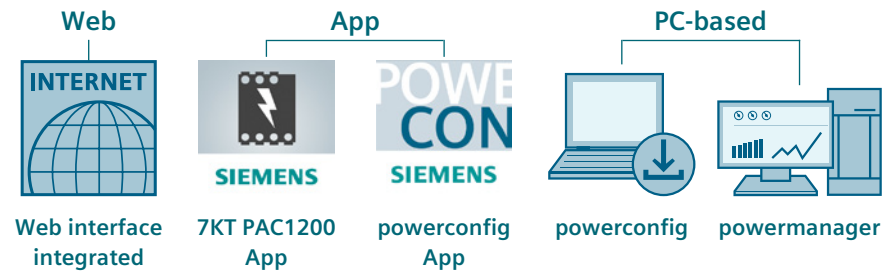
7KT
Current transformers

-	-	■	■
-	-	■	■
-	-	■	■
-	-	■	■
-	■	■	■
■	■	■	■
■	■	■	■
-	-	■	■
-	-	■	■
-	-	■	■
-	-	■	■
-	-	■	■
-	-	■	■
-	-	■	■
-	-	■	■
-	-	■	■
-	-	-	-
-	-	-	-
-	-	-	-
-	-	-	-
-	-	-	-

Software

1

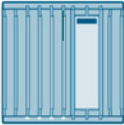

Local monitoring systems



Operating environment

Free use	■	■	■	■	Trial license for up to 10 devices, max. 60 days
System requirements	Browser	Android, iOS	Android	win x64	win x64
Download	– (pre-installed)	play.google.com itunes.apple.com	play.google.com	http://support.automation.siemens.com/WW/view/en/63452759	Trial license: http://support.automation.siemens.com/WW/view/en/64850998
Suitable according to ISO 50001	–	–	–	–	■ (TÜV)
Connection of non-Siemens devices	–	–	–	–	■
Local operation without cloud	■	■	■	■	■
Can be connected to the cloud	–	–	–	–	■

■ Function available □ Available with limited functionality – Function not available

	Cloud
	
7KN Powercenter 3000	MindSphere (Powercenter)
–	Subscription
–	Browser
–	–
■	■
■	■
■	–
■	■

powerconfig

PC-based software for commissioning and maintenance

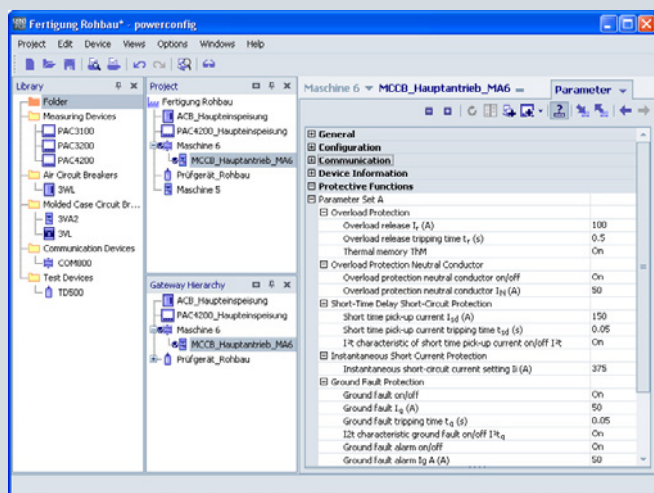
powerconfig is available free of charge at

www.siemens.com/powerconfig

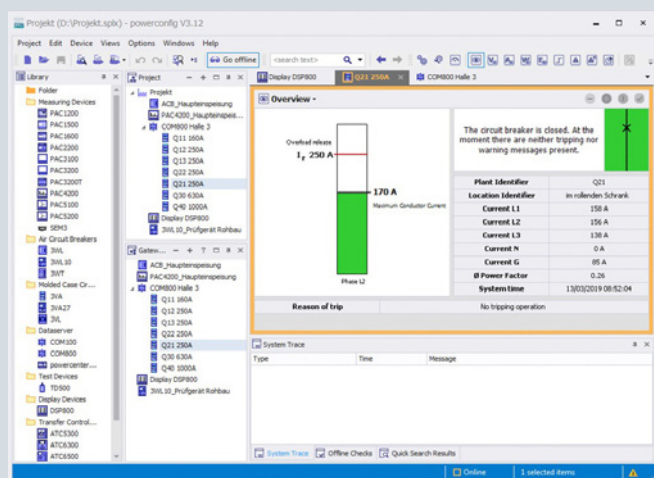
You can find more information on the Internet at

www.siemens.com/sentron

- PC-based software tool for the efficient commissioning and diagnostics of communication-capable SENTRON components
- Supports all PAC measuring devices incl. expansion modules, 3WL/3VA circuit breakers and further communication-capable components, e.g. ATC6300
- Service functions:
 - Firmware updates
 - Switching of language packs for 7KM PAC measuring devices
- General range of functions:
 - Facilitates the parameterization of the devices
 - Saving and printing of device settings
 - Monitoring, saving and printing of instantaneous measured quantities
 - Execution of specific device functions, such as resetting of devices and setting of energy counters
- Additional functional scope with 7KM PAC4200 and 3VA:
 - Readout of data stored in the device (events, load profile history, daily energy counters)
 - Saving in csv format



Setting of parameter values



Display of the circuit breaker state

Maschine 6 ▾ MCCB_Hauptantrieb_MA6 ▾

Current ▾

	Actual Value	Minima	Maxima
L1	80 A	0 A - 23/09/2013 13:21:34	100 A - 23/09/2013 13:21:34

Voltage ▾

Instantaneous Voltage L-N

Actual value

L1-N

231 V

Power ▾

Instantaneous Power

	Active Power	Apparent Power	Reactive Power	Power Factor
L1	18.24 kW	18.51 kVA	3144 var	0.98
L2	18.23 kW	18.49 kVA	3125 var	0.98
L3	18.22 kW	18.48 kVA	3100 var	0.98
Σ	54.69 kW	55.48 kVA	9369 var	0.98

Values of Instantaneous Measuring Interval

	Active Power	Apparent Power	Reactive Power
MIN	20.33 kW	20.33 kVA	0 var
MAX	56.26 kW	56.21 kVA	27.68 kvar
Σ	0 W	0 VA	0 var
Σ Import	0 W	0 VA	0 var
Σ Export	0 W	0 VA	0 var

Values of Last Measuring Interval

	Active Power	Apparent Power	Reactive Power
MIN	48.09 kW	48.09 kVA	0 var
MAX	55.55 kW	55.51 kVA	27.68 kvar
Σ	28.30 kW	28.30 kVA	0 var
Σ Import	0 W	0 VA	0 var
Σ Export	0 W	0 VA	0 var

Display of actual measured quantities

powermanager V3

PC-based power monitoring software

New in powermanager 3.5

- Optimized devices – support for:
 - PAC1600
 - PAC4200 with firmware V2.1
 - SEM3 – support Modbus RTU
- Extension of the scope of service:
 - Integrated MindSphere interface – tuned to SENTRON MindApps
 - OPC UA Server support (fee-based option)

1

Version	Description	Article No.
powermanager V3.5		
Basic Package	Full product license for up to 10 devices, installation for client/server, web access	3ZS2711-0CC30-0YA0
Trial license	Full product license limited to 60 days for up to 10 devices, incl. "Expert" and "Web" option packs Available free of charge at https://support.industry.siemens.com/cs/ww/en/view/64850998	
V3.x device expansions		
Device Pack (20)	Device expansion license for up to 20 devices	3ZS2711-0CC30-0YD0
Device Pack (50)	Device expansion license for up to 50 devices	3ZS2712-0CC30-0YD0
Device Pack (100)	Device expansion license for up to 100 devices	3ZS2713-0CC30-0YD0
Device Pack (200)	Device expansion license for up to 200 devices	3ZS2714-0CC30-0YD0
Device Pack (500)	Device expansion license for up to 500 devices	3ZS2715-0CC30-0YD0
Device Pack (1000)	Device expansion license for up to 1000 devices	3ZS2716-0CC30-0YD0
Option packs		
"Expert" option pack	Option for creating/presenting any number of freely configured images	3ZS2710-2CC20-0YH0
"Client (5)" option pack	Expansion for up to 5 clients	3ZS2710-3CC00-0YD0
"Distributed Systems (2)" option pack	Option for the connection of 2 autonomous powermanager systems for the exchange of measured values and alarms	3ZS2718-1CC00-0YH0
"Distributed Systems (5)" option pack	Option for the connection of 5 autonomous powermanager systems for the exchange of measured values and alarms	3ZS2718-2CC00-0YH0
"Distributed Systems (10)" option pack	Option for the connection of 10 autonomous powermanager systems for the exchange of measured values and alarms	3ZS2718-3CC00-0YH0
Update powermanager V2.0 to V3.0		
Update license	From V2.0 Lean to V3.x (10)	3ZS2711-0CC30-0YE0
Update license	From V2.0 Standard to V3.x (50)	3ZS2712-0CC30-0YE0
Update license	From V2.0 Maximum to V3.x (100)	3ZS2713-0CC30-0YE0
Update license	From V2.0 Maximum to V3.x (200)	3ZS2714-0CC30-0YE0
System packages		
System 1	Package comprising 1× powermanager Basic Package 1× PAC4200 (+ RS485 module) and 1× PAC3100	3ZS2812-5CC20-0AY0
System 3	Package comprising 1× powermanager Basic Package 3× PAC 3200	3ZS2813-2CC20-0YA0
System 4	Package comprising 1× powermanager Basic Package 1× PAC4200 4× PAC1600 1× RS485 module	3ZS2812-7CC20-0YA0
System 5	Package comprising 1× powermanager Basic Package 5× PAC2200 Modbus TCP	3ZS2812-8CC20-0YA0

powermanager V4 **new**

PC-based power monitoring software

SENTRON powermanager V4.1

SENTRON powermanager V4.1 is based on a new platform with advanced graphical capabilities and a standard SQL database. The workflows for setting up the system, creating devices, graphically displaying the device data and processing it in reports have been fundamentally revised. The same devices as in V3.5 are supported, with the exception of the obsolete PAC1500 and SICAM P850/855.

The migration of existing powermanager V3.x projects will be supported as of a future powermanager version.

You can find more information on the Internet at www.siemens.com/powermanager

You can find training courses on the Internet at www.siemens.com/sittrain-lowvoltage

Version	Description	Article No.
powermanager V4.1		
Extended Package	Full product license for up to 10 devices, installation for client/server, web access	7KN2710-2CE40-0YCO
Trial license	powermanager V4.1 Full product license limited to 60 days for up to 10 devices, incl. "Graphics Editor" option pack Available free of charge at https://support.industry.siemens.com	
Device expansions		
Device Pack (20)	Device expansion license for up to 20 devices	7KN2711-1CE40-0YCO
Device Pack (50)	Device expansion license for up to 50 devices	7KN2711-2CE40-0YCO
Device Pack (100)	Device expansion license for up to 100 devices	7KN2711-3CE40-0YCO
Device Pack (200)	Device expansion license for up to 200 devices	7KN2711-4CE40-0YCO
Device Pack (500)	Device expansion license for up to 500 devices	7KN2711-5CE40-0YCO
Device Pack (1000)	Device expansion license for up to 1000 devices	7KN2711-6CE40-0YCO
Option packs		
"Graphics Editor" option pack	Option for creating/presenting any number of freely configured images	7KN2712-0CE40-0YCO
"Client (2)" option pack	Expansion for up to 2 clients	7KN2712-1CE40-0YCO
"Client (5)" option pack	Expansion for up to 5 clients	7KN2712-2CE40-0YCO
"OPC UA/DA Server" option pack	Option for using OPC UA/DA Server	7KN2712-3CE40-0YCO
"powermanager Server" option pack	Additionally, powermanager server license for distributed systems without devices, web, etc.	7KN2712-4CE40-0YCO
Upgrade powermanager V3.x to V4.x		
Upgrade license	From powermanager V3.x to V4.x	7KN2713-2CE40-0YCO
System packages		
System 1	Package comprising 1× powermanager Extended 1× PAC4200 1× PAC3120 1× RS485 modules	7KN2715-1CE40-0YCO
System 3	Package comprising 1× powermanager Extended 3× PAC3220	7KN2715-3CE40-0YCO
System 4	Package comprising 1× powermanager Extended 1× PAC4200 4× PAC1600 1× RS485 module	7KN2715-4CE40-0YCO
System 5	Package comprising 1× powermanager Extended 5× PAC2200 Modbus TCP	7KN2715-5CE40-0YCO

7KN Powercenter **new**

Edge/IoT-based data acquisition and visualization for low-voltage power distribution

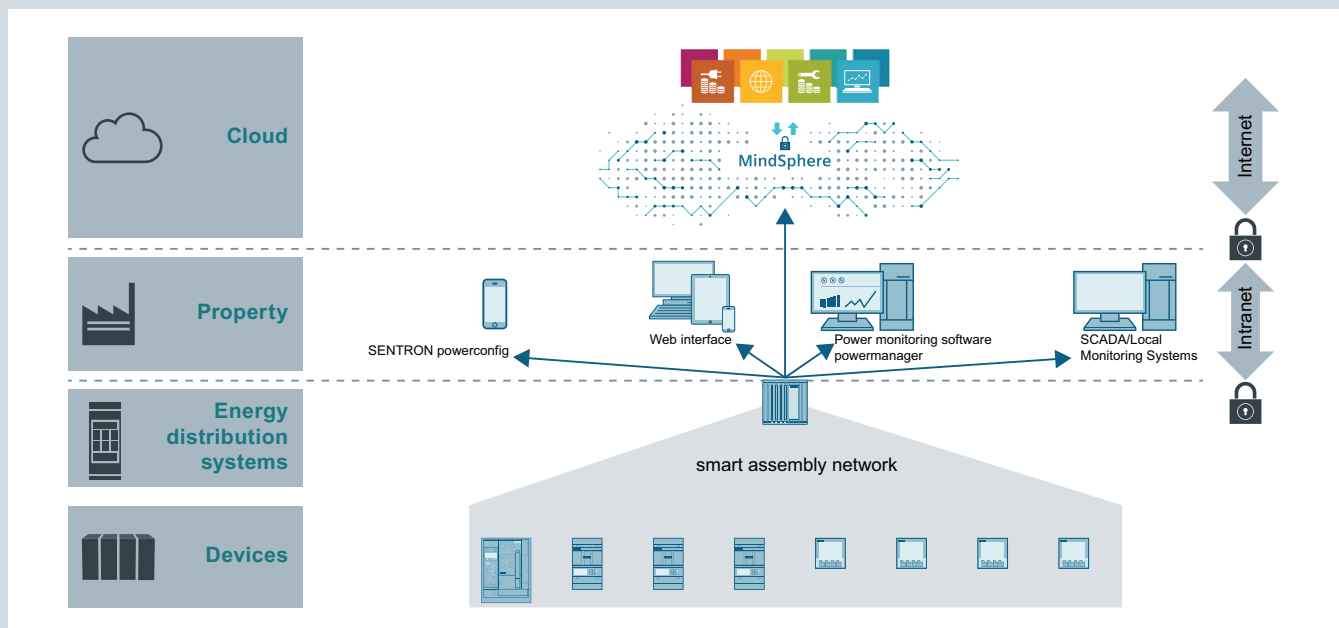
7KN Powercenter 3000

- Offers a range of interfaces for the digitalization of low-voltage power distribution
 - One web interface for a clear overview of all connected devices
 - Low-voltage power distribution data interface to MindSphere, the IoT operating system from Siemens
 - Communication interface via Modbus TCP for diverse applications, e.g. powermanager
- Provision of the 15 min energy values for the connected devices as a basis for energy management according to ISO 50001
- Flexible IT security features for protection against unauthorized access
- Easy commissioning using powerconfig
- Compact design, 24 V DC supply

You can find more information on the Internet at www.siemens.com/powermonitoring

1

Mounting	Interfaces	Protocols	Article No.
Standard rail mounting	2× Ethernet	Modbus TCP, http, MindSphere	7KN1310-0MC00-0AA8



Application areas 7KN Powercenter 3000

SIMATIC Energy Suite

for integrated energy management

Highlights

- Simple and intuitive configuration instead of programming
- Automatic generation of the PLC energy program
- Convenient integration of measuring components from the Siemens portfolio and from other manufacturers
- Integrated into the TIA Portal and the automation system
- Archiving in WinCC Professional or PLC
- Seamless interfacing to Energy Manager PRO and Energy
- Analytics

Additional information on the SIMATIC Energy Suite:

www.siemens.com/energysuite

SIMATIC Modbus/TCP SENTRON PAC

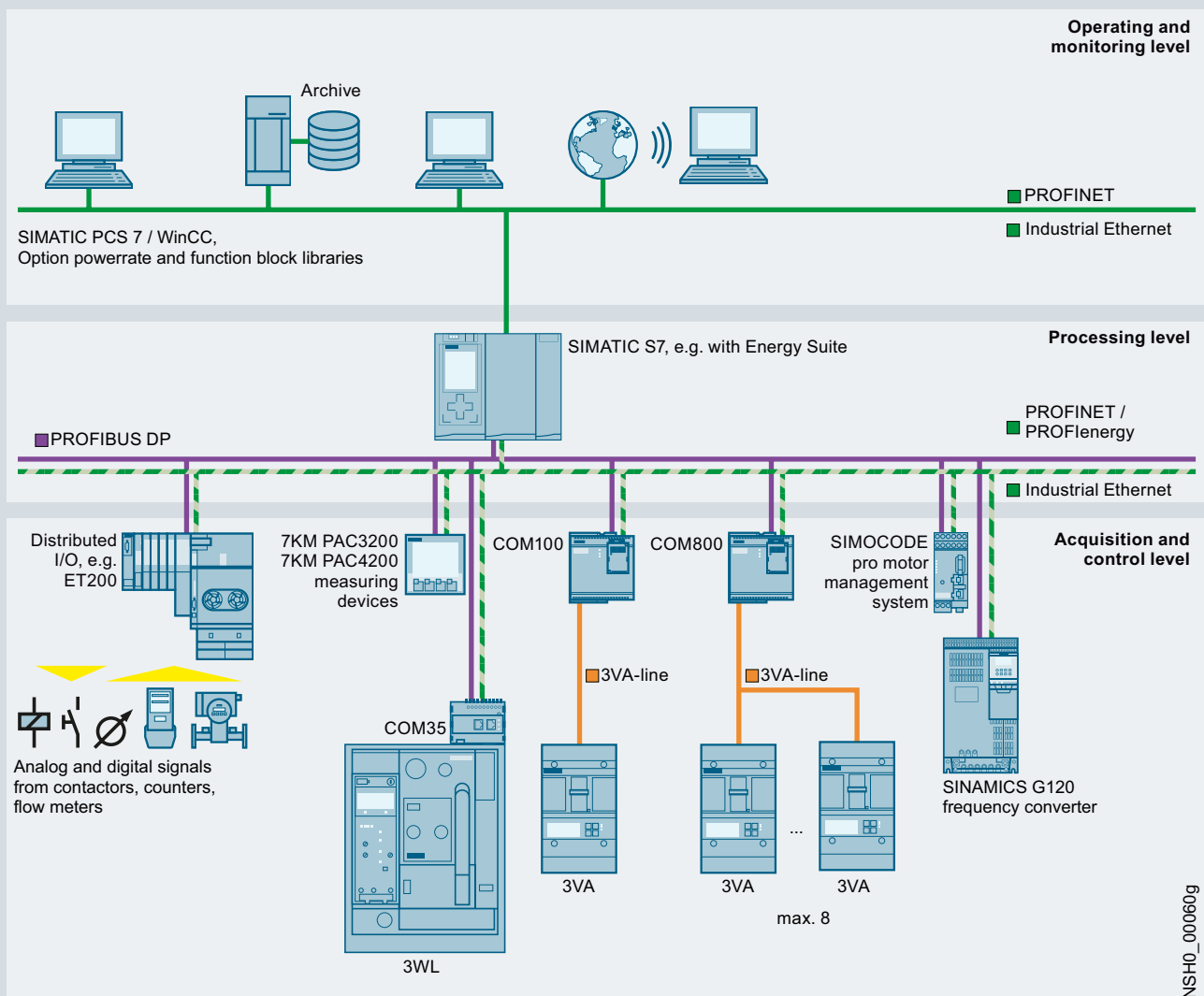
for 7KM PAC3200/4200 measuring devices

Use and version	Valid for	Type	Article No.
Communication via the integrated PN interface for reading values out of PAC 3200 and PAC PAC 4200 devices, single license	1 CPU and up to 20 SENTRON PACs	Modbus/TCP 20 SENTRON PAC	6AV6676-6MA30-0AX0
	1 CPU and up to 100 SENTRON PACs	Modbus/TCP 100 SENTRON PAC	6AV6676-6MA30-1AX0
	1 CPU and up to 512 SENTRON PACs	Modbus/TCP 512 SENTRON PAC	6AV6676-6MA30-2AX0

PAC/3WL/3VA SIMATIC PCS 7 library

for 7KM PAC3200/4200 measuring devices and 3WL/3VA/3VL circuit breakers

Application	Version	Type of delivery	Article No.
PAC/3WL/3VA SIMATIC PCS 7 library			
<ul style="list-style-type: none"> AS blocks and faceplates for integrating the 3WL/3VA/3VL circuit breakers into SIMATIC PCS 7, V8.x or V9.0 SP1 For each SIMATIC PCS 7 Operator Station of the single station/server version, a license containing the following is required: <ul style="list-style-type: none"> Engineering license for one SIMATIC PCS 7 Operator Station of the single station/server version Runtime license for one automation system (1 required per automation system, further AS runtime licenses can be ordered separately) 	Engineering and runtime software, software class A, 2-language (English, German), single license for one installation	Software and electronic documentation on DVD, engineering and runtime license as Certificate of License	3ZS2787-1CC30-0YG0
AS runtime license for PAC/3WL/3VA library for SIMATIC PCS 7			
License for one automation system in each case	Runtime software, software class A, 2-language (English, German), single license for one installation	Runtime license as Certificate of License without software and documentation	3ZS2787-1CC30-6YH0



NSHO_00060g

7KM PAC measuring devices

Basic units

1



Connections	Power supply	Display	Interface	MID	7KM PAC2200	7KM PAC3200T	7KM PAC3100	7KM PAC3120 new
Transformer measurement								
Screw terminals	Self-powered	With	M-Bus	With	7KM2200-2EA30-1GA1	–	–	–
				Without	7KM2200-2EA30-1CA1	–	–	–
			Modbus RTU	With	7KM2200-2EA30-1HA1	–	–	–
				Without	7KM2200-2EA30-1DA1	–	–	–
			Modbus TCP	With	7KM2200-2EA30-1JA1	–	–	–
				Without	7KM2200-2EA30-1EA1	–	–	–
	AC/DC wide-voltage power supply unit	With	Modbus RTU	Without	–	–	7KM3133-0BA00-3AA0	7KM3120-0BA01-1DA0
			Modbus TCP	Without	–	–	–	–
		Without	Modbus TCP	Without	–	7KM3200-0CA01-1AA0	–	–
	DC power supply unit with extra-low voltage	With	Modbus TCP	Without	–	–	–	–
			Modbus RTU	Without	–	–	–	7KM3120-1BA01-1EA0
Ring cable lug connection	AC/DC wide-voltage power supply unit	With	Modbus TCP	Without	–	–	–	–
Direct measurement								
Screw terminals	Self-powered	With	M-Bus	With	7KM2200-2EA40-1GA1	–	–	–
				Without	7KM2200-2EA40-1CA1	–	–	–
			Modbus RTU	With	7KM2200-2EA40-1HA1	–	–	–
				Without	7KM2200-2EA40-1DA1	–	–	–
			Modbus TCP	With	7KM2200-2EA40-1JA1	–	–	–
				Without	7KM2200-2EA40-1EA1	–	–	–

Further technical specifications

Basic data

Installation		Standard mounting rail	Standard mounting rail	Front mounting	Front mounting
Mounting width		6 MW	6 MW	–	–
Control panel instrument		–	–	96 × 96 mm	96 × 96 mm
External auxiliary voltage	50/60 Hz AC	–	90 ... 276 V	100 ... 240 V ±10%	100 ... 250 V ±10%
	DC	–	110 ... 275 V	110 ... 250 V ±10%	100 ... 250 V ±10%

Measuring inputs

Transformer connection	Secondary input current I_e	x/1 A or x/5 A	x/1 A or x/5 A	x/5 A	x/1 A or x/5 A
Direct connection	Input voltage U_e 3 AC 50/60 Hz	480/277 V	480/277 V	480/277 V	690/400 V
	Rated current I_n	65 A	–	–	690/400 V



7KM PAC3200

7KM PAC3220 **new**

7KM PAC4200

7KM PAC5100

7KM PAC5200

–	–	–	–	–
–	–	–	–	–
–	–	–	–	–
–	–	–	–	–
–	–	–	–	–
–	–	–	–	–
7KM2112-0BA00-3AA0	7KM3220-0BA01-1DA0	7KM4212-0BA00-3AA0	7KM5212-6BA00-1EA2	7KM5412-6BA00-1EA2
–	–	–	7KM5212-6CA00-1EA8	7KM5412-6CA00-1EA8
7KM2111-1BA00-3AA0	7KM3220-1BA01-1EA0	7KM4211-1BA00-3AA0	–	–
–	–	–	–	–
7KM2112-0BA00-2AA0	–	7KM4212-0BA00-2AA0	–	–
–	–	–	–	–
–	–	–	–	–
–	–	–	–	–
–	–	–	–	–
–	–	–	–	–

7KM2112-..

7KM2111-..

7KM3220-0..

7KM3220-1..

7KM4212-..

7KM4211-..

7KM5212-

7KM5412

Front mounting	Front mounting	Front mounting	Front mounting/ standard mounting rail	Front mounting/ standard mounting rail
–	–	–	–	–
96 × 96 mm	96 × 96 mm	96 × 96 mm	96 × 96 mm	96 × 96 mm
95 ... 240 V ±10%	100 ... 250 V ±10%	95 ... 240 V ±10%	110 ... 230 V ±10%	110 ... 230 V ±10%
110 ... 340 V ±10%	22 ... 65 V ±10%	100 ... 250 V ±10%	24 ... 250 V ±10%	24 ... 250 V ±10%
–	–	–	–	–
x/1 A or x/5 A	x/1 A or x/5 A	x/1 A or x/5 A	x/1 A or x/5 A	x/1 A or x/5 A
690/400 V	400/230 V	690/400 V	690/400 V	690/400 V
–	–	–	–	–

7KM PAC measuring devices

Accessories

1

7KM PAC3100
7KM PAC3120
7KM PAC3200
7KM PAC3220
7KM PAC4200

7KM PAC TMP2 standard mounting rail adapter



- Two-tier adapter for mounting a measuring device on a standard mounting rail
- Front display
- For manual intervention

7KM9900-0XA00-0AA0

7KM PAC TMP mounting plate



- Adapter for mounting a measuring device on standard mounting rail
- Display faces backwards towards standard mounting rail
- Readout and evaluation of measurements solely via mains operation

7KM9900-0YA00-0AA0

Compact holder



- Device holder for 7KM PAC3100 /3120/3200/3220/4200
- 10 holders for 5 PAC devices
- For seamless side-by-side mounting of the devices (without spaces)

7KM9900-0GA00-0AA0






Spare parts 7KM PAC



- Spare parts comprising:
 - Device holders for panel mounting (2X)
 - Screw terminal for connection of voltage inputs
 - Screw terminal for connection of current inputs
 - Terminal block inputs/outputs for 7KM PAC3100/4200
 - Terminal block inputs/outputs for 7KM PAC3200
 - RS485 terminal blocks for 7KM PAC3100

7KM9900-0SA00-0AA0

Expansion and communication modules

	7KM PAC3200	7KM PAC3220 7KM PAC4200	COM100/800 (3VA)
7KM Switched Ethernet PROFINET communication module			
 <ul style="list-style-type: none"> • Latest PROFINET switching properties • S2 system redundancy for operation in H systems • CiR Configuration in Run • Firmware update via the modules for PAC4200 and PAC3220 			
		7KM9300-0AE02-0AA0	
7KM PROFIBUS DP communication module			
		7KM9300-0AB01-0AA0	
7KM RS485 communication module			
		7KM9300-0AM00-0AA0 ¹⁾	
7KM PAC 4DI/2DO expansion module			
		7KM9200-0AB00-0AA0	
7KM PAC I(N), I(Diff), analog expansion module			
 <ul style="list-style-type: none"> • To add the following functions to the measuring inputs: <ul style="list-style-type: none"> – N conductor measurement – Two analog inputs, also for measuring non-electrical quantities such as temperature, water or air pressure – Residual current measurement via type A or type B summation current transformers 			
	7KM9200-0AD00-0AA0	7KM9200-0AD00-0AA0	

¹⁾ Suitable for 7KM PAC4200 (especially for the Modbus TCP/RTU Gateway)

Residual-current transformers for 7KM PAC I(N), I(Diff), analog expansion module [see LV 10, page 11/1](#)

7KT PAC measuring devices

Basic unit PAC1600



Connections	Version	Power supply	Display	Interface	MID	7KT PAC1600
Transformer measurement						
Screw terminals	3-phase	Self-powered	With	Modbus RTU	Without	7KT1661
					With	7KT1662
				M-Bus	Without	7KT1663
					With	7KT1664
				S0-Interface	Without	7KT1672
					With	7KT1673
	3-phase, universal	Auxiliary power: 100 ... 240 V AC, 110 ... 250 V DC 50/60Hz	With	–	Without	7KT1681
				Modbus RTU	Without	7KT1682
Direct measurement						
Screw terminals	1-phase	Self-powered	With	Modbus RTU	Without	7KT1651
					With	7KT1652
				M-Bus	Without	7KT1653
					With	7KT1654
				S0-Interface	Without	7KT1655
					With	7KT1656
	3-phase	Self-powered	With	Modbus RTU	Without	7KT1665
					With	7KT1666
				M-Bus	Without	7KT1667
					With	7KT1668
				S0-Interface	Without	7KT1670
					With	7KT1671

PAC1200 multichannel current measuring system



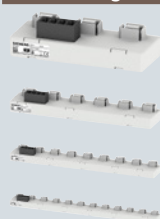
1

Connections	Version	Power supply	Display	Interface	MID	7KT PAC1200
Direct measurement						
Screw terminals	3-phase	Self-powered	Without	Modbus TCP	Without	7KT1260


PAC1200

7KT PAC1200

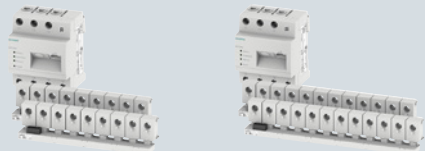
Data manager with 7KT1260, sensor bars

	Number of connections	Article No.
	3	7KT1233
	6	7KT1236
	9	7KT1238
	12	7KT1242

Data manager with 7KT1260, sensors

	Current I_e	Article No.
	40 A	7KT1254
	63 A	7KT1255

PAC1200 Bundles



Data manager	Sensor bars	Sensors	18 bundle	24 bundle
1× data manager 7KT1260	2× 9-sensor bar 7KT1238	18× sensors 40 A 7KT1254	7KT1222	—
1× data manager 7KT1260	2× 12-sensor bar 7KT1242	24× sensors 40 A 7KT1254	—	7KT1223

SEM3 multichannel current measuring system

Data manager



Connections	Version	Power supply	Display	Interface	MID	
Transformer measurement						
Screw terminals	3-phase	Self-powered	Without	Modbus TCP RS485 Modbus RTU	Without	US2:SEM3CONTROLLER

Further technical specifications

SEM3

Basic data	
Installation	Screw mounting
Measuring inputs	
Max. input voltage 50/60 Hz AC	480 V/277 V
Standard current transformers	50 ... 1200 A/0.1 A
Folding transformer	50 ... 2000 A/0.1 A

Accessories

Metering modules



- For recording measured values
- Accuracy of 0.2% or 1% for the entire measurement including current transformer
- Simple setting of phase configuration by means of slide switch
- Connection of a current transformer for measuring a phase
- Metering module is plugged into meter rack

Measuring accuracy

0.2%

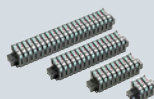
1%

Article No.

US2:SEM3PHAMETER

US2:SEM3PLAMETER

Meter racks



Version

For 3 metering modules

For 9 metering modules

For 15 metering modules

For 21 metering modules

Article No.

US2:SEM3RACK3

US2:SEM3RACK9

US2:SEM3RACK15

US2:SEM3RACK21

Connecting cables



- 600 V insulated special cable for connecting meter racks to the data manager

Length

0.3 m

0.6 m

0.9 m

Article No.

US2:SEM3CAB12INCH

US2:SEM3CAB24INCH

US2:SEM3CAB36INCH

Standard current transformers



- Standard power cable brown and yellow, 1.82 m long
- Can be extended up to 100 m while still maintaining accuracy
- Transformer configuration is carried out in the data manager

Output signal

100 mA

Transformer transmission ratio

50 : 0.1

125 : 0.1

250 : 0.1

400 : 0.1

600 : 0.1

800 : 0.1

1200 : 0.1

Article No.

US2:SEM3SCCT50

US2:SEM3SCCT125

US2:SEM3SCCT250

US2:SEM3SCCT400

US2:SEM3SCCT600

US2:SEM3SCCT800

US2:SEM3SCCT1200

Folding transformers **new**



- Standard power cable brown and yellow, 1.82 m long
- Can be extended up to 100 m while still maintaining accuracy
- Transformer configuration is carried out in the data manager

Output signal

100 mA

Transformer transmission ratio

50 : 0.1

125 : 0.1

250 : 0.1

400 : 0.1

600 : 0.1

800 : 0.1

1200 : 0.1

1600 : 0.1

2000 : 0.1

Article No.

7KT1280-5MA00

7KT1280-5MA01

7KT1280-5MA02

7KT1280-5MA03

7KT1280-5MA04

7KT1280-5MA05

7KT1280-5MA06

7KT1280-5MA07

7KT1280-5MA08

DIN rail adapters **new**



Article No.

US2:SEM3DINKIT

Time and pulse counters

Mechanical counting mechanisms

1



Display	Resetting	Rated frequency	Rated control supply voltage U_c	48 × 48 mm	72 × 72 mm	–
Time counter						
00000.00 h	Without	–	10 ... 80 V DC	7KT5500	–	–
			10 ... 50 V DC	–	7KT5600	–
			12 ... 24 V DC	–	–	7KT5801
		50 Hz	24 V AC	7KT5505	–	7KT5802
			115 V AC	7KT5501	7KT5601	7KT5803
			230 V AC	7KT5502	7KT5602	7KT5804
		60 Hz	115 V AC	7KT5503	7KT5603	7KT5806
			230 V AC	7KT5504	7KT5604	7KT5807
Pulse counter						
0000000	Without	–	12 ... 24 V DC	–	–	7KT5811
		50/60 Hz	24 V AC	–	–	7KT5812
			230 V AC	–	–	7KT5814

Further technical specifications

	7KT55..	7KT56..	7KT58..
Basic data			
Installation	Front mounting	Front mounting	Standard mounting rail
Mounting width	–	–	2 MW
Front frame	48 × 48 mm	72 × 72 mm	–
Display	Drum-type register	Drum-type register	Drum-type register
Version	–	With narrow frame according to DIN 43700	–

Accessories

	7KT55..	7KT56..	7KT58..
Cover			
Size	Article No.	Article No.	Article No.
55 × 55 mm	7KT9020	–	–
Sealing ring for cover			
Degree of protection	Scope of supply	Article No.	Article No.
IP43 (in switchboards with smooth surfaces)	1 set = 5 units	7KT9000	–
Terminal cover			
Degree of protection	Article No.	Article No.	Article No.
IP20 (with connected conductors)	–	7KT9021	–

Electronic counting mechanisms



1

Display	Resetting	Rated frequency	Rated control supply voltage U _c	
Time counter				
000000.0 h	Without	50/60 Hz	24 ... 240 V AC, 12 ... 150 V DC	7KT5821
	Electrical	50/60 Hz	24 ... 240 V AC, 12 ... 150 V DC	7KT5822
	Electrical and mechanical	50/60 Hz	24 ... 240 V AC, 12 ... 150 V DC	7KT5823
Pulse counter				
0000000	Electrical and mechanical	50/60 Hz	24 ... 240 V AC, 12 ... 150 V DC	7KT5833

Further technical specifications

7KT58..

Basic data	
Installation	Standard mounting rail
Mounting width	2 MW
Display	LCD display

Current transformers

for measuring purposes

1




Size	Rated operational voltage U _e	Rated primary current I _{pr}	Rated power P _n	I _{sr} = 5 A	I _{sr} = 1 A	I _{sr} = 5 A
Accuracy class 0.2						
1	720 V	150 A	1 VA	4NC5121-2FA21	–	–
		200 A	2.5 VA	4NC5122-2FC21	–	–
		250 A	2.5 VA	4NC5123-2FC21	–	–
		300 A	5 VA	4NC5124-2FE21	–	–
		400 A	5 VA	4NC5125-2FE21	–	–
		500 A	5 VA	4NC5126-2FE21	–	–
5	720 V	600 A	5 VA	4NC5227-2FE21	–	–
		700 A	5 VA	4NC5228-2FE21	–	–
		800 A	5 VA	4NC5231-2FE21	–	–
		1000 A	5 VA	4NC5232-2FE21	–	–
Accuracy class 0.5						
1	720 V	100 A	1 VA	4NC5117-2DA21	4NC5117-0DA21	–
		150 A	2.5 VA	4NC5121-2DC21	4NC5121-0DC21	–
		200 A	5 VA	4NC5122-2DE21	4NC5122-0DE21	–
		250 A	5 VA	4NC5123-2DE21	4NC5123-0DE21	–
2	720 V	200 A	5 VA	4NC5222-2DE21	4NC5222-0DE21	–
		250 A	5 VA	4NC5223-2DE21	4NC5223-0DE21	–
		300 A	5 VA	4NC5224-2DE21	4NC5224-0DE21	–
		400 A	5 VA	4NC5225-2DE21	4NC5225-0DE21	–
3	720 V	400 A	5 VA	4NC5325-2DE21	4NC5325-0DE21	–
		500 A	5 VA	4NC5326-2DE21	4NC5326-0DE21	–
		600 A	5 VA	4NC5327-2DE21	4NC5327-0DE21	–
		750 A	5 VA	4NC5330-2DE21	4NC5330-0DE21	–
		800 A	5 VA	4NC5331-2DE21	–	–
4	720 V	800 A	10 VA	4NC5431-2DH21	4NC5431-0DH21	–
		1000 A	10 VA	4NC5432-2DH21	4NC5432-0DH21	–
		1200 A	10 VA	4NC5433-2DH21	4NC5433-0DH21	–
		1500 A	10 VA	4NC5435-2DH21	4NC5435-0DH21	–
		1600 A	15 VA	4NC5436-2DK21	–	–
		2000 A	20 VA	4NC5438-2DL21	–	–
		2500 A	25 VA	4NC5440-2DM21	–	–
		3000 A	30 VA	4NC5441-2DN21	–	–



Size	Rated operational voltage U_e	Rated primary current I_{pr}	Rated power P_n	$I_{sf} = 5 \text{ A}$	$I_{sf} = 1 \text{ A}$	$I_{sf} = 5 \text{ A}$
Accuracy class 1.0						
1	720 V	50 A	1.2 VA	4NC5112-2CB21	4NC5112-0CB21	–
		60 A	1.2 VA	4NC5113-2CB21	4NC5113-0CB21	–
			1.25 VA	–	–	7KT1200
		75 A	2.5 VA	4NC5115-2CC21	4NC5115-0CC21	–
		100 A	2.5 VA	4NC5117-2CC21	4NC5117-0CC21	7KT1201
		150 A	2.5 VA	4NC5121-2CC21	4NC5121-0CC21	–
			3.75 VA	–	–	7KT1202
		200 A	5 VA	4NC5122-2CE21	4NC5122-0CE21	–
2	720 V	250 A	5 VA	4NC5123-2CE21	4NC5123-0CE21	–
		200 A	5 VA	4NC5222-2CE21	4NC5222-0CE21	–
		250 A	5 VA	4NC5223-2CE21	4NC5223-0CE21	–
		300 A	5 VA	4NC5224-2CE21	4NC5224-0CE21	–
		400 A	5 VA	4NC5225-2CE21	4NC5225-0CE21	–
3	720 V	400 A	5 VA	4NC5325-2CE21	4NC5325-0CE21	–
		500 A	5 VA	4NC5326-2CE21	4NC5326-0CE21	–
		600 A	5 VA	4NC5327-2CE21	4NC5327-0CE21	–
		750 A	5 VA	4NC5330-2CE21	4NC5330-0CE21	–
4	720 V	800 A	10 VA	4NC5431-2CH21	4NC5431-0CH21	–
		1000 A	10 VA	4NC5432-2CH21	4NC5432-0CH21	–
		1250 A	10 VA	4NC5434-2CH21	4NC5434-0CH21	–
		1500 A	10 VA	4NC5435-2CH21	4NC5435-0CH21	–
		2000 A	12.5 VA	4NC5438-2CJ21	4NC5438-0CJ21	–
		2500 A	12.5 VA	4NC5440-2CJ21	4NC5440-0CJ21	–
		3000 A	30 VA	4NC5441-2CN21	–	–

Accessories

Standard rail mounting				
	For transformer size		Article No.	Article No.
	1 and 5		4NC5923-5LT21	4NC5923-5LT21
	2		4NC5925-5LT21	4NC5925-5LT21
	3		4NC5930-5LT21	4NC5930-5LT21
	4		4NC5940-5LT21	4NC5940-5LT21



Appendix

A

Link directory	A/2
Conditions of sale and delivery	A/4
Article number index	A/6
Index	A/7
Notes	A/8

Link directory

Catalog LV 14

General information

Information on low-voltage power distribution and electrical installation technology	www.siemens.com/lowvoltage
Specification texts	www.siemens.com/lowvoltage/tenderspecifications
Conversion tool	www.siemens.com/conversion-tool
Image database	www.siemens.com/lowvoltage/picturedb
CAX Download Manager	www.siemens.com/lowvoltage/cax
Newsletter system	www.siemens.com/lowvoltage/newsletter
Siemens YouTube channel	www.youtube.com/Siemens
Brochures / catalogs	www.siemens.com/lowvoltage/catalogs
Operating instructions / manuals	www.siemens.com/lowvoltage/manuals
Siemens Industry Online Support	www.siemens.com/lowvoltage/product-support
Siemens Industry Online Support app	www.siemens.com/support-app
My Documentation Manager (MDM)	www.siemens.com/lowvoltage/mdm
Configurators	www.siemens.com/lowvoltage/configurators
Siemens Industry Mall – product catalog and online ordering system	www.siemens.com/industrymall
Direct forwarding to the Industry Mall	www.siemens.com/product?Article No.
Interactive Product Catalog CA 01	www.siemens.com/automation/ca01
Training	www.siemens.com/sitrain-lowvoltage
Local contacts	www.siemens.com/lowvoltage/contact
Technical Support	www.siemens.com/lowvoltage/support-request
Information on services	www.siemens.com/service-catalog
Application consulting for control panel construction, machine manufacture, and plant building	www.siemens.com/applicationconsulting
Manual for the generation, transmission and distribution of electrical energy	www.siemens.com/power-engineering-guide
Control panels for the North American market	www.siemens.com/northamerican-standards
Control panel building	www.siemens.com/controlpanel
Energy savings and amortization	www.automation.siemens.com/sinasave
Energy Suite	www.siemens.com/energysuite
SITOP power supplies	www.siemens.com/sitop
Efficiency class IE3	www.siemens.com/IE3ready
Power distribution with Totally Integrated Power	www.siemens.com/tip

Information + ordering

Technical overviews

Measuring devices, power monitoring and digitalization solutions www.siemens.com/lowvoltage/product-support (109764480)

All the important things at a glance

Measuring devices, power monitoring and digitalization solutions www.siemens.com/powermonitoring
www.siemens.com/lowvoltage/digitalization

Your product in detail

Technical basic information – SENTRON power monitoring and digital solutions www.siemens.com/lowvoltage/product-support (109769851)

Brochure – Reliable, sustainable, and efficient – TÜV-certified power monitoring system in accordance with ISO 50001 www.siemens.com/lowvoltage/product-support (109744679)

Brochure – SENTRON portfolio for power monitoring www.siemens.com/lowvoltage/product-support (109744725)

Siemens YouTube channel

Power monitoring (general) bit.ly/2lZ9QqC

Everything you need for your order

Measuring devices and power monitoring sie.ag/2kTH9Lz

Digitalization solutions sie.ag/2olliNi

Library for SIMATIC sie.ag/2kpbwcs

powermanager / powerconfig sie.ag/2kTJjuF

Commissioning + operation

Configuration software

powerconfig configuration software www.siemens.com/powerconfig

Manuals

Configuration manual measuring devices and power monitoring www.siemens.com/lowvoltage/manuals (45315973)

Equipment manual 7KT PAC1600 energy meter www.siemens.com/lowvoltage/manuals (109759827)

Equipment manual 7KT PAC1600 multimeter www.siemens.com/lowvoltage/manuals (109760293)

System manual 7KT multichannel current measuring system www.siemens.com/lowvoltage/manuals (109483442)

Equipment manual PAC2200 measuring device www.siemens.com/lowvoltage/manuals (109746835)

Equipment manual SENTRON PAC3200 power monitoring device www.siemens.com/lowvoltage/manuals (26504150)

Equipment manual PAC3200T measuring device www.siemens.com/lowvoltage/manuals (109746833)

System manual SENTRON PAC4200 power monitoring devices www.siemens.com/lowvoltage/manuals (34261595)

Equipment manual PAC3100 measuring device www.siemens.com/lowvoltage/manuals (37881976)

Device manual SENTRON PAC5100/5200 7KM5212/5412 www.siemens.com/lowvoltage/manuals (109477872)

Equipment manual 7KM PAC3120 and 7KM PAC3220 www.siemens.com/lowvoltage/manuals (109767307)

Equipment manual SENTRON PAC5100/5200 7KM5212/5412 www.siemens.com/lowvoltage/manuals (109477870)

System manual – 3VA communication IEC / UL www.siemens.com/lowvoltage/manuals (98746267)

SEM3™ – Embedded Micro Metering Module™ www.siemens.com/lowvoltage/manuals (109748928)

Training and tutorials

Power monitoring with SENTRON www.siemens.com/sitrain-lowvoltage (WT-LVAEM)

Energy management – Basic training www.siemens.com/sitrain-lowvoltage (LV-EMSENTB)

Energy management – Training for experts www.siemens.com/sitrain-lowvoltage (LV-EMSENTE)

Communication with SENTRON components www.siemens.com/sitrain-lowvoltage (LV-COM)

Conditions of sale and delivery

1. General standards

By using this catalog you can acquire hardware and software products described therein from Siemens AG subject to these conditions of sale and delivery (hereinafter: CSD). Please note: the scope, the quality and the conditions for supplies and services, including software products, by any Siemens group or Regional Company having a registered office outside of Germany, shall be subject exclusively to the General Terms and Conditions of the respective Siemens entity. These CSD apply exclusively for orders placed with Siemens AG, Germany.

1.1 For customers with a seat or registered office in Germany

For customers with a seat or registered office in Germany, the following shall be subordinate to these CSD

- for installation, the "Standard Terms and Conditions for Installation Germany" and
- for Plant Analytics Services the "Standard Terms and Conditions for Plant Analytics Services for Customers in Germany"¹⁾ and
- for standalone software products and software products that are part of another product or project, the "General License Conditions for Software Products for Automation and Drives for Customers with a Seat or Registered Office in Germany"¹⁾ and
- for other supplies and services, the "General Conditions for the Supply of Products and Services of the Electrical and Electronics Industry"¹⁾.

In the event that such other supplies and services include open-source software, the conditions of which override the "General Conditions for the Supply of Products and Services of the Electrical and Electronics Industry"¹⁾, the product will be supplied with a notice detailing the special conditions that apply for the relevant open-source software. This applies accordingly in the case of a reference to other third-party software components.

1.2 For customers with a seat or registered office outside of Germany

For customers with a seat or registered office outside of Germany, the following shall be subordinate to these CSD

- for Plant Analytics Services the "Standard Terms and Conditions for Plant Analytics Services"¹⁾ (only available in English) and
- for services, the "International Terms & Conditions for Services"¹⁾ supplemented by the "Software Licensing Conditions"¹⁾ and
- for the supply of other hardware and software the "International Terms & Conditions for Products"¹⁾ supplemented by the "Software Licensing Conditions"¹⁾.

1.3 For customers with framework agreements

To the extent that our products and services are covered by an existing framework agreement, the conditions there apply instead of this CSD.

2. Additional terms and conditions

All dimensions are in mm. In Germany, according to the German law on units in metrology, data in inches only apply to devices for export.

Illustrations are not binding.

Insofar as there are no remarks on the corresponding pages of this catalog – especially with regard to data, dimensions and weights given – these are subject to change without prior notice.

3. Export regulations

We shall not be obligated to fulfill this agreement if such fulfillment is prevented by any impediments arising out of national or international foreign trade or customs requirements or any embargoes or other sanctions.

Exporting may be subject to authorization. In delivery information, we label authorization obligations according to German, European and US export lists.

Our products are controlled by the U.S. authorities (goods labeled with "ECCN" not equal to "N") and may only be supplied to the stated country of the end user for sole use by the end user. Without U.S. government approval or other approval under U.S. law, the products may not be sold, transferred or otherwise forwarded to other countries or to other persons other than the specified end user, either in their original form or after further processing into other goods. Goods labeled with an "AL" not equal to "N" are subject to European/national export authorization requirements.

Please note that you can also preview the export designations in the respective product description via our "Industry Mall" online catalog system. The deciding factors, however, are the AL or ECCN export designations indicated on order confirmations, delivery notes and invoices.

Unmarked items or items marked "AL:N" / "ECCN:N" or "AL:9X9999" / "ECCN: 9X9999" may require authorization based on their intended use or ultimate destination.

If you transfer goods (hardware and/or software and/or technology as well as corresponding documentation, regardless of the mode of provision) delivered by us or works and services (including all kinds of technical support) performed by us to a third party worldwide, you shall comply with all applicable national and international (re-)export control regulations.

¹⁾ You can download the text of the Siemens AG terms and conditions of trade at www.siemens.com/automation/salesmaterial-as/catalog/en/terms_of_trade_en.pdf

If required to conduct export control checks, you, at our request, shall promptly provide us with all information pertaining to particular end customers, destination and intended use of goods, works and services provided by us, as well as any relevant export control restrictions.

The products listed in this catalog may be subject to European/ German and/or US export regulations. Therefore, any export requiring a license is subject to approval by the competent authorities.

Errors excepted and subject to change without prior notice.

A

Article number index

Article No.	Page
3Z	
3ZS27	1/13, 1/17
3ZS28	1/13
4N	
4NC51	1/28–1/29
4NC52	1/28–1/29
4NC53	1/28–1/29
4NC54	1/28–1/29
4NC59	1/29
6A	
6AV66	1/16
7K	
7KM21	1/19
7KM22	1/18
7KM31	1/18
7KM32	1/18–1/19
7KM42	1/19
7KM52	1/3, 1/19
7KM54	1/19
7KM92	1/21
7KM93	1/21
7KM99	1/20
7KN13	1/15
7KN27	1/14
7KT12	1/23, 1/25, 1/29
7KT16	1/22
7KT55	1/26
7KT56	1/26
7KT58	1/26–1/27
7KT90	1/26
US	
US2	1/24–1/25

Index

Keyword	Page
0–9	
7KM PAC measuring devices	1/18 , 1/20
7KN Powercenter	1/15
7KT PAC measuring devices	1/22
A	
Accessories	1/8
All the information you need	1/2
C	
Conditions of sale and delivery	A/4
Current transformers	1/28
D	
Digitalization Solutions	1/1
E	
Examples of digitalization in industry	I/3
Examples of digitalization in infrastructure	I/2
H	
Hardware components	1/6
I	
Introduction to the topic of digitalization and industry 4.0	I/4
L	
Link directory	A/2–A/3
M	
Measuring devices	1/1 , 1/18
P	
PAC/3WL/3VA SIMATIC PCS 7 library	1/17
powerconfig	1/12
powermanager V3	1/13
powermanager V4	1/14
Power Monitoring	1/1 , 1/4
Q	
Quick selection guide	1/4
S	
SEM3 multichannel current measuring system	1/24
SIMATIC Energy Suite	1/16
SIMATIC Modbus/TCP SENTRON PAC	1/16
Software	1/10 , 1/12
T	
Time and pulse counters	1/26

A

Catalogs and further information



LV 10 **Low-Voltage Power Distribution and** **Electrical Installation Technology** SENTRON • SIVACON • ALPHA

Protection, Switching, Measuring and
Monitoring Devices, Switchboards and
Distribution Systems

PDF (E86060-K8280-A101-A10-7600)



LV 14 **Power Monitoring Made Simple** SENTRON

PDF/Print (E86060-K1814-A101-A6-7600)



LV 18 **Air Circuit Breakers and Molded Case** **Circuit Breakers with UL Certification** SENTRON

PDF (E86060-K8280-E347-A3-7600)



ET D1 **Switches and Socket Outlets** DELTA

PDF



IC 10 **Industrial Controls** SIRIUS

PDF/Print (E86060-K1010-A101-B1-7600)



IK PI **Industrial Communication** SIMATIC NET

PDF (E86060-K6710-A101-B8-7600)



Industry Mall Information and Ordering Platform on the Internet:

www.siemens.com/industrymall



CA 01 **Products for Automation and Drives** Interactive Catalog

Information and download:
www.siemens.com/automation/ca01



Siemens TIA Selection Tool for the selection, configuration and ordering of TIA products and devices

www.siemens.com/tst



Training for Industry SITRAIN

www.siemens.com/sitrain

The catalogs listed above and additional catalogs are
available in PDF format at Siemens Industry Online Support
www.siemens.com/lowvoltage/catalogs

Further information on low-voltage power distribution
and electrical installation technology is available on the
Internet at
www.siemens.com/lowvoltage

Get more information

www.siemens.com/lowvoltage

Published by
Siemens AG

For the U.S. published by
Siemens Industry Inc.

Smart Infrastructure
Low Voltage Products
Siemensstraße 10
93055 Regensburg, Germany

100 Technology Drive
Alpharetta, GA 30005
United States

Article No. E86060-K1814-A101-A6-7600
Dispo 18301
KG 1119 .5 AUM 44 En
Printed in Germany
© Siemens 2019

Subject to changes and errors. The information given in this catalog only contains general descriptions and/or performance features which may not always specifically reflect those described, or which may undergo modification in the course of further development of the products. The requested performance features are binding only when they are expressly agreed upon in the concluded contract.

All product designations may be trademarks or other rights of Siemens AG, its affiliated companies or other companies whose use by third parties for their own purposes could violate the rights of the respective owner.

Token fee: 2.00 €

Security information

Siemens provides products and solutions with industrial security functions that support the secure operation of plants, systems, machines and networks.

In order to protect plants, systems, machines and networks against cyber threats, it is necessary to implement – and continuously maintain – a holistic, state-of-the-art industrial security concept. Siemens' products and solutions constitute one element of such a concept.

Customers are responsible for preventing unauthorized access to their plants, systems, machines and networks. Such systems, machines and components should only be connected to an enterprise network or the Internet if and to the extent such a connection is necessary and only when appropriate security measures (e.g. firewalls and/or network segmentation) are in place.

For additional information on industrial security measures that may be implemented, please visit
<https://www.siemens.com/industrialsecurity>

Siemens' products and solutions undergo continuous development to make them more secure. Siemens strongly recommends that product updates are applied as soon as they are available and that the latest product versions are used. Use of product versions that are no longer supported, and failure to apply the latest updates may increase customer's exposure to cyber threats.

To stay informed about product updates, subscribe to the Siemens Industrial Security RSS Feed under
<https://www.siemens.com/industrialsecurity>