



IDEAL NETWORKS



NaviteK NT

Copper and Fibre Network Troubleshooter

Proof of Performance

NaviTEK NT

Network Troubleshooter

The NaviTEK NT is a network tester for troubleshooting and maintenance of active and passive copper and fibre networks. Incorporating an improved graphical interface NaviTEK NT allows network technicians to pinpoint and solve network connectivity issues faster than ever before. Subsequently, tests can be saved as pdf reports and shared with colleagues and clients using the free IDEAL AnyWare™ app.

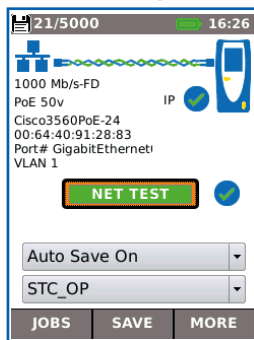


Addressing the needs of today's network technicians

Today, network technicians have a broad selection of software troubleshooting tools at their disposal and whilst useful in certain situations and environments they do have limitations. NaviTEK NT on the other hand offers a comprehensive suite of test and troubleshooting functionality only found on dedicated hand-held testers:-

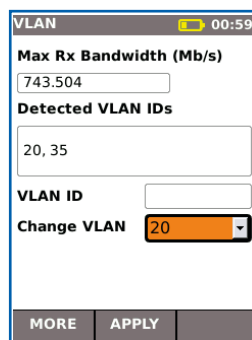
- Copper and fibre test interfaces
- Fast detection of link and IP information including duplex, speed, port ID, VLAN, DNS, DHCP, Gateway status and IP address
- Detects services such as ISDN, POTS and PoE
- Accurate wire mapping including length measurement and distance to fault
- Rugged, compact design permits use in confined spaces
- Not susceptible to virus and malware attack

Port & network summary info



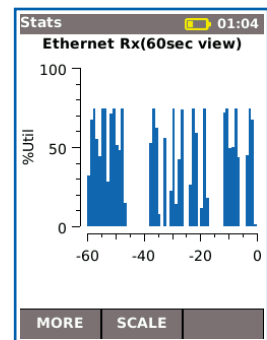
Press the Autotest button to display summary information and allow for detailed inspection of network parameters.

VLAN detection & operation



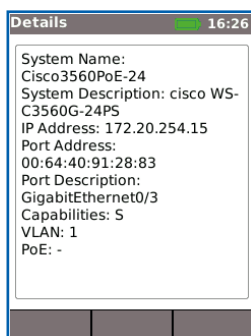
Automatic detection of VLAN ID's allows the user to configure NaviTEK NT for operation on a VLAN.

Ethernet utilisation



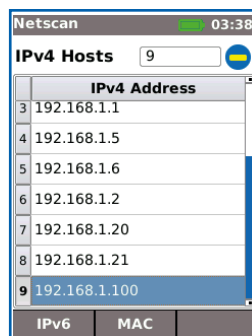
Real time display of broadcast network traffic shown as a percentage of port speed for the previous 60 minutes.

CDP/LLDP/EDP port information



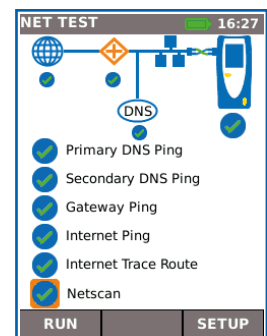
Show port information using Cisco Discovery Protocol (CDP), Link Layer Discovery Protocol (LLDP) and Extreme Discovery Protocol (EDP).

Netscan



Display list of IP and MAC addresses of every device connected to the network.

Network Probe



View network illustration to verify test results of each network component.

Send test reports from anywhere using the free app



IDEAL
AnyWARE



Step 1

Test

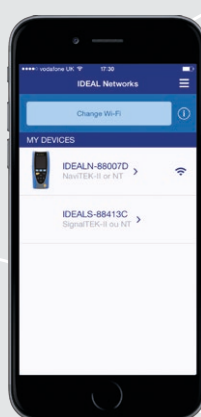
- Create job folder
- Enter job site information
- Perform autotest on copper/fibre cabling and copper/fibre networks



Step 2

Connect

- Activate NaviTEK NT wireless hotspot
- Connect your mobile phone or tablet with the IDEAL AnyWARE App
- Transfer test reports to your mobile device
- View test reports



Step 3

Send

- Select reports (PDF or CSV) to send
- Select preferred transfer method – email, ftp, cloud storage etc.
- Send file
- Alternatively save test reports to USB key

Download the FREE App today



NaviTEK NT

Performs tests for copper cabling and networks, including:

- Display network configuration - IPv4 / IPv6 compatible
- Advanced wiremap for miswires, split pairs, opens and shorts
- Distance to opens and shorts (TDR)
- PoE/PoE+ detection
- Tone generator for cable tracing
- Ping and Traceroute testing
- Hub blink for port identification
- DHCP client
- Switch detection - 10/100/1000 Mb/s
- User-exchangeable RJ45 inserts
- Support for up to 12 wiremap remotes
- Backlit colour screen

NaviTEK NT Plus

All the features of NaviTEK NT as well as:

- Autotest button performs a suite of network tests
- Network Probe provides detailed port and network information of each device
- Port identification using EDP/CDP/LLDP protocols
- VLAN detection and support
- Network scan
- Traffic utilisation bar graph
- Internal memory for 5000 test reports
- Generate test reports (PDF or CSV)
- Sent test reports from your mobile device using the free IDEAL AnyWARE App

NaviTEK NT Pro

All of the features of NaviTEK NT Plus as well as:

- Fibre optic cable interface
- Logon using the 802.1x protocol
- Optical interface with power indication

NaviTEK NT

Network Troubleshooter

Test Reporting


NaviTEK NT automatically generates test reports in PDF or CSV format.

The summary page of each report can be customised to include logo, company and operator details. Choose between 3 different reports that can show either passed, failed or all test reports in each report:

- Summary
- Brief
- Full (see example on the right side)

Ordering Information

Part No.	Kit Contents
R153001	NaviTEK NT – Network Troubleshooter. 1 x NaviTEK NT test unit, 1 x Remote unit No. 1, 4 x AA dry cell batteries (non-rechargeable), 2 x Patch cables - 30cm, Cat. 5e STP, 1 x Quick reference guide, 1 x Carry case
R151003	NaviTEK NT Plus– Network Troubleshooter. 1 x NaviTEK NT Plus test unit, 1 x Remote unit No. 1, 1 x Rechargeable Power Module, 1 x PSU EU/UK/US adaptors, 2 x Patch cables - 30cm, Cat. 5e STP, 1 x USB Wi-Fi adapter, 1 x Quick reference guide, 1 x Carry case
R151004	NaviTEK NT Pro – Network Troubleshooter. 1 x NaviTEK NT Pro test unit, 1 x Remote unit No. 1, 1 x Rechargeable Power Module, 1 x PSU EU/UK/US adaptors, 2 x Patch cables - 30cm, Cat. 5e STP, 1 x USB Wi-Fi adapter, 1 x Quick reference guide, 1 x Carry case



NaviTEK-NT Test Report

Job Name: Building_5
Date Tested: October 21 2015
Time Tested: 17:00
Info 1: IT_Admin_UK
Info 2: PORT_7
Info 3: ROOM_24
Info 4: RACK_3
Info 5: VLAN_ACCESS
Info 6: CHASSIS_S00M1
Info 7: FLOOR_23
Info 8: THAMES_ESTATE

Owner: Inder
Company: IDEAL NETWORKS
Address 1: 15 CHENINGWORTH RD
Address 2: OSFORD ROAD
City:
State:
Zip:
Country: UK
Phone1: 0844149486472
Phone2:

PASS
TestID: 0017
EIN: 00056-886702
System Name: Switch 2
System Description: G3481V3 ProStack 48-port Gigabit E
IP Address: 172.20.1.4
Port Address: 58-56-43-6a-b2-5e
Port Description: g25
Capabilities: 8
VLAN:
PoE Power (W):

Setup					Results					Detected VLAN ID:												
Port	Line Rate	duplex	Speed	IPv6	Standards																	
Auto	Auto	Auto	1000 Mb/s	Full Duplex	Assigned	172.20.20.24																
Auto	Auto	Auto	1000 Mb/s	Full Duplex	Assigned	2001:5db1:501::c00:216:aff:fa8b:7d																
Setup					Results																	
Int	Min	Max	Pwr	Test	Voltage (V)	Current (mA)	Power (W)	Power (W)	Power (W)	Pair 12-34	Pair 40-78											
Auto	Auto	Auto	Auto	Auto	Auto	Auto	Auto	Auto	Auto	Auto	Auto											
Primary DNS Ping	Test	Destination	IP	Time (ms)	Length (Bytes)	Tx (Packets)	Rx (Packets)	Min (Kbps)	Max (Kbps)	Avg (ms)	Max (ms)											
Auto	Auto	172.20.1.1	1000	64	1	1	1.2	1.2	1.2	1.2	1.2											
Secondary DNS Ping	Test	Destination	IP	Time (ms)	Length (Bytes)	Tx (Packets)	Rx (Packets)	Min (Kbps)	Max (Kbps)	Avg (ms)	Max (ms)											
Auto	Auto	172.20.1.1	1000	64	1	1	1.2	1.2	1.2	1.2	1.2											
Gateway Ping	Test	Destination	IP	Time (ms)	Length (Bytes)	Tx (Packets)	Rx (Packets)	Min (Kbps)	Max (Kbps)	Avg (ms)	Max (ms)											
Auto	Auto	172.20.1.3	1000	64	1	3	1.1	1.3	1.4	1.4	1.4											
Internet Ping	Test	Destination	IP	Time (ms)	Length (Bytes)	Tx (Packets)	Rx (Packets)	Min (Kbps)	Max (Kbps)	Avg (ms)	Max (ms)											
Manual	Auto	www.google.com	1000	64	1	3	4.4	5.2	6.6	6.6	6.6											
Trace Route	Test	Destination	IP	Time (ms)	Length (Bytes)	Total	Packets	Time 1	Time 2	Time 3	Time 4											
Auto	Auto	www.google.com	30	3	6	4.059	4.058	4.064														
Netscan					Results																	
IP	Host Address	Scan Range	Hosts	Pkts Found																		
Auto	10.0.0.0/24	255.0.0.0	254	254																		
IP Address					MAC Address																	
172.20.20.24	00:0c:29:63:2c:2a	54:00:29:63:2c:2a	172.20.20.25	54:00:29:63:2c:2b	172.20.20.26	54:00:29:63:2c:2c	172.20.20.27	54:00:29:63:2c:2d	172.20.20.28	54:00:29:63:2c:2e	172.20.20.29	54:00:29:63:2c:2f	172.20.20.30	54:00:29:63:2c:30								
172.20.20.31	54:00:29:63:2c:31	54:00:29:63:2c:32	172.20.20.33	54:00:29:63:2c:33	172.20.20.34	54:00:29:63:2c:34	172.20.20.35	54:00:29:63:2c:35	172.20.20.36	54:00:29:63:2c:36	172.20.20.37	54:00:29:63:2c:37	172.20.20.38	54:00:29:63:2c:38								
172.20.20.39	54:00:29:63:2c:39	54:00:29:63:2c:3a	172.20.20.41	54:00:29:63:2c:3a	172.20.20.42	54:00:29:63:2c:3b	172.20.20.43	54:00:29:63:2c:3c	172.20.20.44	54:00:29:63:2c:3d	172.20.20.45	54:00:29:63:2c:3e	172.20.20.46	54:00:29:63:2c:3f								
172.20.20.47	54:00:29:63:2c:3f	54:00:29:63:2c:40	172.20.20.48	54:00:29:63:2c:40	172.20.20.49	54:00:29:63:2c:41	172.20.20.50	54:00:29:63:2c:42	172.20.20.51	54:00:29:63:2c:43	172.20.20.52	54:00:29:63:2c:44	172.20.20.53	54:00:29:63:2c:45								
172.20.20.54	54:00:29:63:2c:46	54:00:29:63:2c:47	172.20.20.55	54:00:29:63:2c:47	172.20.20.56	54:00:29:63:2c:48	172.20.20.57	54:00:29:63:2c:49	172.20.20.58	54:00:29:63:2c:4a	172.20.20.59	54:00:29:63:2c:4b	172.20.20.60	54:00:29:63:2c:4c								
172.20.20.61	54:00:29:63:2c:4d	54:00:29:63:2c:4e	172.20.20.62	54:00:29:63:2c:4e	172.20.20.63	54:00:29:63:2c:4f	172.20.20.64	54:00:29:63:2c:50	172.20.20.65	54:00:29:63:2c:51	172.20.20.66	54:00:29:63:2c:52	172.20.20.67	54:00:29:63:2c:53								
172.20.20.68	54:00:29:63:2c:54	54:00:29:63:2c:55	172.20.20.69	54:00:29:63:2c:55	172.20.20.70	54:00:29:63:2c:56	172.20.20.71	54:00:29:63:2c:57	172.20.20.72	54:00:29:63:2c:58	172.20.20.73	54:00:29:63:2c:59	172.20.20.74	54:00:29:63:2c:5a								
172.20.20.75	54:00:29:63:2c:5b	54:00:29:63:2c:5c	172.20.20.76	54:00:29:63:2c:5c	172.20.20.77	54:00:29:63:2c:5d	172.20.20.78	54:00:29:63:2c:5e	172.20.20.79	54:00:29:63:2c:5f	172.20.20.80	54:00:29:63:2c:60	172.20.20.81	54:00:29:63:2c:61								
172.20.20.82	54:00:29:63:2c:62	54:00:29:63:2c:63	172.20.20.83	54:00:29:63:2c:63	172.20.20.84	54:00:29:63:2c:64	172.20.20.85	54:00:29:63:2c:65	172.20.20.86	54:00:29:63:2c:66	172.20.20.87	54:00:29:63:2c:67	172.20.20.88	54:00:29:63:2c:68								
172.20.20.89	54:00:29:63:2c:69	54:00:29:63:2c:6a	172.20.20.90	54:00:29:63:2c:6a	172.20.20.91	54:00:29:63:2c:6b	172.20.20.92	54:00:29:63:2c:6c	172.20.20.93	54:00:29:63:2c:6d	172.20.20.94	54:00:29:63:2c:6e	172.20.20.95	54:00:29:63:2c:6f								
172.20.20.96	54:00:29:63:2c:70	54:00:29:63:2c:71	172.20.20.97	54:00:29:63:2c:71	172.20.20.98	54:00:29:63:2c:72	172.20.20.99	54:00:29:63:2c:73	172.20.20.100	54:00:29:63:2c:74	172.20.20.101	54:00:29:63:2c:75	172.20.20.102	54:00:29:63:2c:76								
172.20.20.103	54:00:29:63:2c:77	54:00:29:63:2c:78	172.20.20.104	54:00:29:63:2c:78	172.20.20.105	54:00:29:63:2c:79	172.20.20.106	54:00:29:63:2c:7a	172.20.20.107	54:00:29:63:2c:7b	172.20.20.108	54:00:29:63:2c:7c	172.20.20.109	54:00:29:63:2c:7d								
172.20.20.110	54:00:29:63:2c:7e	54:00:29:63:2c:7f	172.20.20.111	54:00:29:63:2c:7f	172.20.20.112	54:00:29:63:2c:80	172.20.20.113	54:00:29:63:2c:81	172.20.20.114	54:00:29:63:2c:82	172.20.20.115	54:00:29:63:2c:83	172.20.20.116	54:00:29:63:2c:84								
172.20.20.117	54:00:29:63:2c:85	54:00:29:63:2c:86	172.20.20.118	54:00:29:63:2c:86	172.20.20.119	54:00:29:63:2c:87	172.20.20.120	54:00:29:63:2c:88	172.20.20.121	54:00:29:63:2c:89	172.20.20.122	54:00:29:63:2c:8a	172.20.20.123	54:00:29:63:2c:8b								
172.20.20.124	54:00:29:63:2c:8c	54:00:29:63:2c:8d	172.20.20.125	54:00:29:63:2c:8d	172.20.20.126	54:00:29:63:2c:8e	172.20.20.127	54:00:29:63:2c:8f	172.20.20.128	54:00:29:63:2c:90	172.20.20.129	54:00:29:63:2c:91	172.20.20.130	54:00:29:63:2c:92								
172.20.20.131	54:00:29:63:2c:93	54:00:29:63:2c:94	172.20.20.132	54:00:29:63:2c:94	172.20.20.133	54:00:29:63:2c:95	172.20.20.134	54:00:29:63:2c:96	172.20.20.135	54:00:29:63:2c:97	172.20.20.136	54:00:29:63:2c:98	172.20.20.137	54:00:29:63:2c:99								
172.20.20.138	54:00:29:63:2c:9a	54:00:29:63:2c:9b	172.20.20.139	54:00:29:63:2c:9b	172.20.20.140	54:00:29:63:2c:9c	172.20.20.141	54:00:29:63:2c:9d	172.20.20.142	54:00:29:63:2c:9e	172.20.20.143	54:00:29:63:2c:9f	172.20.20.144	54:00:29:63:2c:a0								
172.20.20.145	54:00:29:63:2c:a1	54:00:29:63:2c:a2	172.20.20.146	54:00:29:63:2c:a2	172.20.20.147	54:00:29:63:2c:a3	172.20.20.148	54:00:29:63:2c:a4	172.20.20.149	54:00:29:63:2c:a5	172.20.20.150	54:00:29:63:2c:a6	172.20.20.151	54:00:29:63:2c:a7								
172.20.20.152	54:00:29:63:2c:a8	54:00:29:63:2c:a9	172.20.20.153	54:00:29:63:2c:a9	172.20.20.154	54:00:29:63:2c:aa	172.20.20.155	54:00:29:63:2c:ab	172.20.20.156	54:00:29:63:2c:ac	172.20.20.157	54:00:29:63:2c:ad	172.20.20.158	54:00:29:63:2c:ae								
172.20.20.159	54:00:29:63:2c:af	54:00:29:63:2c:b0	172.20.20.160	54:00:29:63:2c:b0	172.20.20.161	54:00:29:63:2c:b1	172.20.20.162	54:00:29:63:2c:b2	172.20.20.163	54:00:29:63:2c:b3	172.20.20.164	54:00:29:63:2c:b4	172.20.20.165	54:00:29:63:2c:b5								
172.20.20.166	54:00:29:63:2c:b6	54:00:29:63:2c:b7	172.20.20.167	54:00:29:63:2c:b7	172.20.20.168	54:00:29:63:2c:b8	172.20.20.169	54:00:29:63:2c:b9	172.20.20.170	54:00:29:63:2c:ba	172.20.20.171	54:00:29:63:2c:bb	172.20.20.172	54:00:29:63:2c:bc								
172.20.20.173	54:00:29:63:2c:bd	54:00:29:63:2c:be	172.20.20.174	54:00:29:63:2c:be	172.20.20.175	54:00:29:63:2c:bf	172.20.20.176	54:00:29:63:2c:c0	172.20.20.177	54:00:29:63:2c:c1	172.20.20.178	54:00:29:63:2c:c2	172.20.20.179	54:00:29:63:2c:c3								
172.20.20.180	54:00:29:63:2c:c4	54:00:29:63:2c:c5	172.20.20.181	54:00:29:63:2c:c5	172.20.20.182	54:00:29:63:2c:c6	172.20.20.183	54:00:29:63:2c:c7	172.20.20.184	54:00:29:63:2c:c8	172.20.20.185	54:00:29:63:2c:c9	172.20.20.186	54:00:29:63:2c:ca								
172.20.20.187	54:00:29:63:2c:cb	54:00:29:63:2c:cc	172.20.20.188	54:00:29:63:2c:cc	172.20.20.189	54:00:29:63:2c:cd	172.20.20.190	54:00:29:63:2c:ce	172.20.20.191	54:00:29:63:2c:cf	172.20.20.192	54:00:29:63:2c:d0	172.20.20.193	54:00:29:63:2c:d1								
172.20.20.194	54:00:29:63:2c:d2	54:00:29:63:2c:d3	172.20.20.195	54:00:29:63:2c:d3	172.20.20.196	54:00:29:63:2c:d4	172.20.20.197	54:00:29:63:2c:d5	172.20.20.198	54:00:29:63:2c:d6	172.20.20.199	54:00:29:63:2c:d7	172.20.20.200	54:00:29:63:2c:d8								
172.20.20.201	54:00:29:63:2c:d9	54:00:29:63:2c:da	172.20.20.202	54:00:29:63:2c:da	172.20.20.203	54:00:29:63:2c:db	172.20.20.204	54:00:29:63:2c:dc	172.20.20.205	54:00:29:63:2c:dd	172.20.20.206	54:00:29:63:2c:de	172.20.20.207	54:00:29:63:2c:df								
172.20.20.208	54:00:29:63:2c:df	54:00:29:63:2c:e0	172.20.20.209	54:00:29:63:2c:e0	172.20.20.210	54:00:29:63:2c:e1	172.20.20.211	54:00:29:63:2c:e2	172.20.20.212	54:00:29:63:2c:e3	172.20.20.213	54:00:29:63:2c:e4	172.20.20.214	54:00:29:63:2c:e5								
172.20.20.215	54:00:29:63:2c:e6	54:00:29:63:2c:e7	172.20.20.216	54:00:29:63:2c:e7	172.20.20.217	54:00:29:63:2c:e8	172.20.20.218	54:00:29:63:2c:e9	172.20.20.219	54:00:29:63:2c:ea	172.20.20.220	54:00:29:63:2c:eb	172.20.20.221	54:00:29:63:2c:ec								
172.20.20.222	54:00:29:63:2c:ed	54:00:29:63:2c:ee	172.20.20.223	54:00:29:63:2c:ee	172.20.20.224	54:00:29:63:2c:ef	172.20.20.225	54:00:29:63:2c:f0	172.20.20.226	54:00:29:63:2c:f1	172.20.20.227	54:00:29:63:2c:f2	172.20.20.228	54:00:29:63:2c:f3								
172.20.20.229	54:00:29:63:2c:f4	54:00:29:63:2c:f5	172.20.20.230	54:00:29:63:2c:f5	172.20.20.231	54:00:29:63:2c:f6	172.20.20.232	54:00:29:63:2c:f7	172.20.20.233	54:00:29:63:2c:f8	172.20.20.234	54:00:29:63:2c:f9	172									

Optional Accessories

Part No.	Description
MGKSX1	1 x 850nm SX MM SFP + fibre patch cord accessories kit
MGKLX2	1 x 1310nm LX SM SFP + fibre patch cord accessories kit
MGKZX3	1 x 1550nm ZX SM SFP + fibre patch cord accessories kit
150058	RJ-45 replacement kit - Pack of 10 replacement inserts with extraction tool

For a full list of optional accessories, please visit our website.

Basic Specifications

Max. No. of Jobs	Max. No. of Stored Test	Max. Length	Battery Life	Dimensions per handset in mm	Weight per handset
50	5000	181 m/593 ft.	5 hours	175 x 80 x 40	0.4 kg

For detailed specifications, please visit our website.



IDEAL NETWORKS

Apple and the Apple logo are trademarks of Apple Inc., registered in the U.S. and other countries. App Store is a service mark of Apple Inc.

Android is a trademark of Google Inc.

All Rights Reserved. IDEAL, IDEAL NETWORKS, IDEAL AnyWARE and the NaviTEK logos are trademarks or registered trademarks of IDEAL INDUSTRIES LIMITED or IDEAL INDUSTRIES, INC.

IDEAL INDUSTRIES NETWORKS DIVISION
Unit 3, Europa Court, Europa Boulevard, Warrington,
Cheshire, WA5 7TN, UK.

Tel. +44 (0)1925 444 446 | Fax. +44 (0)1925 445501

uksales@idealnwd.com

www.idealnetworks.net



A subsidiary of
IDEAL INDUSTRIES INC.



IDEAL INDUSTRIES, INC.

Specification subject to change
without notice. E&OE

© IDEAL Networks 2015

Publications no: 151851, Rev. 1