



Photon Series

Professional-Grade IP Surveillance Cameras

EnGenius Photon Series, of professional-grade IP Surveillance Cameras, offer superior, high definition image performance in deployments that need 24/7 monitoring. Retail businesses, corporate or school campuses, multi-tenant housing and luxury estates, are all more secure with a Photon Series IP Camera situated at strategic access points.

With built-in infrared (IR) lighting and motion detection, properties can be monitored day or night in low light or complete darkness. Remotely view cameras and receive email alerts and 10-second video clips directly to an iPhone®, iPad® or Android™ smartphone or tablet for global 24/7 surveillance with EnGenius' EnViewer™ mobile App.

Extend your camera network to maximize coverage virtually anywhere. Choose the Photon IP Camera or Wireless IP Surveillance System that best meets your surveillance needs, including indoors or outdoors with wired, and near or long-range wireless network access.

Photon Series IP Surveillance Cameras are ideal for deployment in:

- > Luxury Homes & Estates
- > Small Businesses
- > Small-to-Medium Corporate Campuses
- > Transportation Hubs – Airports, Bus Depots, & Train Stations
- > Schools, Colleges & Universities
- > Stadiums & Arenas
- > Multi-Tenant Dwellings
- > Hotels & Resorts
- > Warehouse Operations
- > Military Bases
- > Medical Centers
- > Parks & Golf Courses
- > Parking Structures
- > Shopping Malls

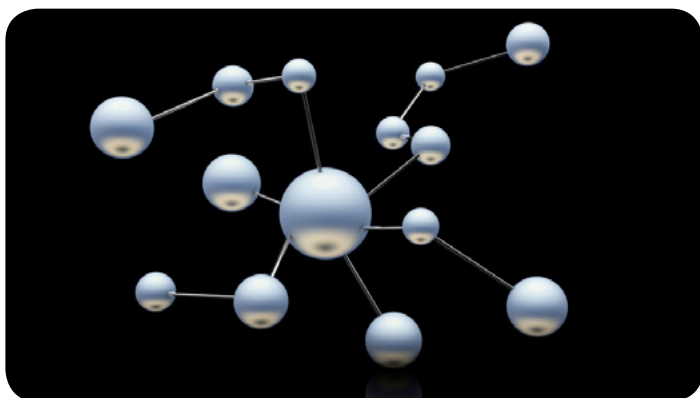
Features

- > Wide angle CMOS lens captures high-res images over broader areas
- > Mechanical IR cut filters & built-in IR illuminators for night viewing to 85-ft./25m
- > High-speed wired & 802.11n wireless cameras for flexible deployments
- > Power-over-Ethernet (802.11af) extends power to unwired areas
- > H.264 Video provides up to 1920 x 1080 HD performance with less bandwidth
- > Triple Codecs: H.264/MPEG-4 & MJPEG to 30 fps
- > Dual-stream supports varying frame-rates & resolutions
- > Includes 16-Channel VM Software with live monitoring
- > Receive alarm alerts directly to your mobile device for rapid response
- > Remotely view cameras from your mobile device with free EnViewer mobile App
- > ONVIF-compliant for easy integration with 3rd party products
- > Point-to-point & point-to-multipoint surveillance over large distances
- > IP66-rated waterproof & dustproof casing withstands harsh climates



Network Integration

Security concerns top the agenda of many organizations today leading to an increased presence of surveillance cameras in homes and businesses alike. As surveillance systems become an integral part of the network, the need to quickly integrate and monitor them along with existing networks becomes increasingly important. EnGenius **Photon Series IP Cameras** seamlessly integrates quickly and easily with EnGenius' complete line of wired and wireless networking solutions.



IP Cameras - Superior Surveillance Technology

Today's surveillance cameras are far superior to their older analog CCTV cousins, providing the highest quality digital images along with the highest frame rates for clearer faces, sharper details and smoother video. Also unlike their analog counterparts, IP cameras integrate easily into existing wired or wireless Ethernet networks and offer:

Simplified Installation – Plug-and-play configuration is standard for IP Cameras. Provide power, network connectivity and stream video over a single CAT5/6 cable or go wireless and simply plug the camera into an electrical outlet vs. the configuration time and multiple cables needed for a single analog camera installation.

Elimination of Unnecessary Hardware – Connect to existing network switches and store video footage directly to network connected computers or storage servers (NAS), eliminating the need for analog to digital conversion hardware such as video encoders and Digital Video Recorders (DVR).

Affordable Scalability – Add cameras as needed, with no limits associated to your DVR's camera connection capacity.

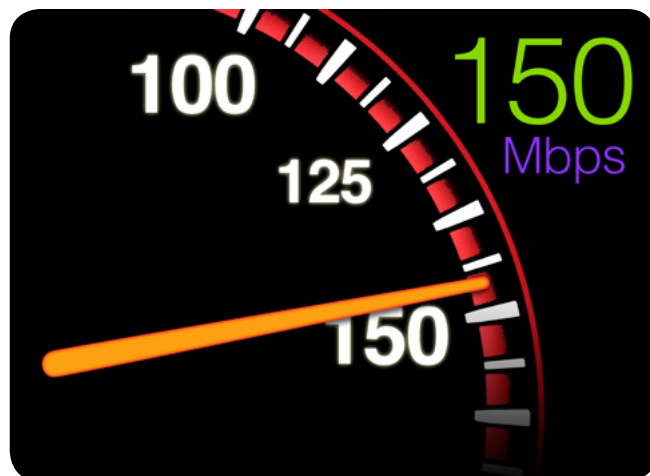
Greater Functionality – Easily view IP camera feeds remotely via the Internet, receive automated alerts via email and integrate with feature-rich monitoring software for Intelligent Surveillance; features only previously available with expensive analog video encoder/DVR systems.

Open Platform – Utilizing a standards-based architecture ensures IP cameras and Video Management Software is interoperable with a wider range of network devices, including Windows-based PCs, as compared to proprietary Network Video Recorders (NVRs) and DVRs.

Improved Image Quality – On-camera digital processors optimize video, transmitting consistent, high-quality digital images without degradation, compared to lower quality analog CCTV video, which must be converted to digital by the encoder or DVR, losing even more image quality along the way.

Wireless Cameras offer Affordability, Flexibility & Scalability in Deployment Scenarios

Choose an EnGenius Photon Series Wireless Camera for even greater flexibility in the most demanding deployments. Eliminate the need for expensive trenching or concrete cutting for CCTV cable-runs in outdoor perimeter camera placements, and cabling through walls, attics or floors. Wireless Cameras also offer a greater level of scalability and are easily added to an existing system with minimal planning.



Photon Wireless IP Cameras support fast wireless speeds up to 150 Mbps, providing high-speed performance, maximizing HD video transmissions.

Wireless IP Surveillance System

Not all surveillance challenges fit into a neat little box. Campuses, civic centers, shopping complexes, plus indoor and outdoor arenas can be crowded with buildings and other obstructions, and may be saturated with a spectrum of RF signals. EnGenius Wireless IP Surveillance System is designed to provide long-range, point-to-point and point-to-multipoint surveillance coverage for expansive venues, transmitting streaming video at stable, robust wireless speeds over great distances – up to 5 miles point-to-point in challenging environments.

Available in both Wireless N300 speeds, the 2.4 GHz IP Surveillance System (EDS8012 or EDS8022) or the 5 GHz IP Surveillance System (EDS8015 or EDS8025), is designed to withstand extreme environmental conditions and features certified IP-rated housing.



Highly Defined Resolution

All Photon Series IP Surveillance Cameras support the latest Progressive Scan CMOS sensor technology, providing crystal clear details in moving objects like car license plates or facial features making these important details less ambiguous. With High Definition quality video running 1080p at 30 frames per second, Photon IP Cameras provide superior quality and smooth video over analog CCTV with smaller file sizes, which is ideal for viewing video on mobile devices, sending via email and maximizing available storage space.



Optimize Images in Varied Lighting

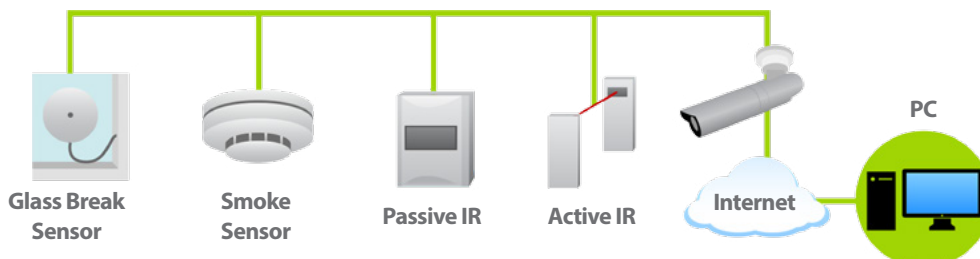
With Wide Dynamic Range technology, select Photon Series IP Cameras can be fine-tuned to ensure an optimal level of configuration for customized lighting environments, providing clear images, even in highly backlit areas indoors and out.



Alarm Alerts

Intergrate IP camera with 3rd party digital alarms, sensors or other electronic devices that activate when motion detectors are triggered, serving as an added deterrent to prolonged suspicious activity.

Connection to one digital input device



Excellent Performance in Harsh Environments

Need to deploy surveillance cameras in harsh environments? Select Photon IP Cameras include IP66-rated dust and waterproof housing designed to withstand harsh environmental conditions. With an included cable management bracket, each device is protected and accompanying cables are hidden from damage while offering a clean aesthetic.

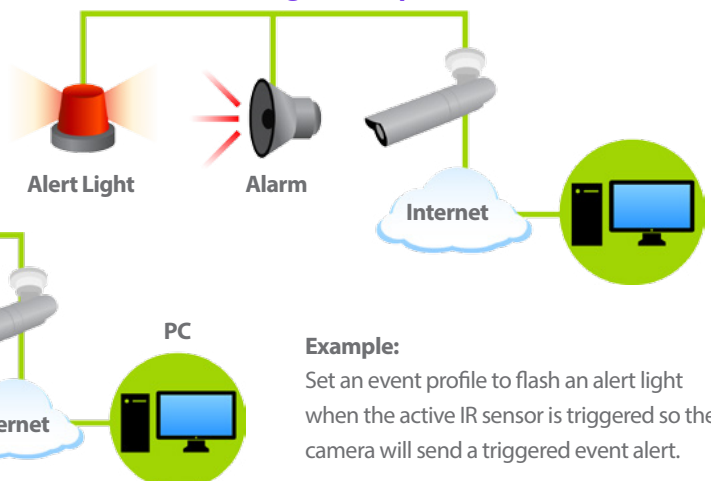


Place Almost Anywhere with PoE Support

Extend your camera network to maximize coverage virtually anywhere. Select the Photon IP Camera that best meets your surveillance needs including indoor, outdoor, wired or wireless network access. All cameras are 802.3af-compliant and can be powered via Power-over-Ethernet (PoE), eliminating the need for a nearby electrical outlet.



Connection to one digital output device



Push Notification

Remotely view and monitor up to four (4) cameras simultaneously from anywhere and instantly record video with EnGenius' EnViewer mobile App. View, record and receive triggered event alerts directly to your smartphone or tablet for instant notifications of events-in-progress with free downloadable App for Android and iOS.



24/7 Vigilance

Monitor your business during or after hours, even in low light or in complete darkness up to 85-feet, with EnGenius Day/Night IP Surveillance Cameras. Receive Motion and Audio Detection alerts (on select models) and recordings directly to your smartphone or iPad ensuring a quick response to suspicious activity.

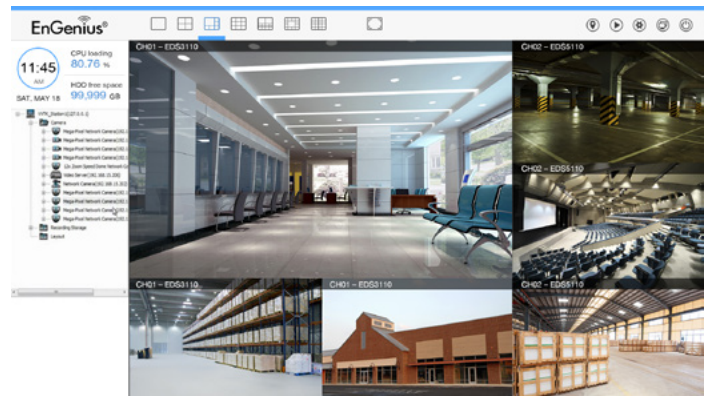
Zone Coverage

Set precise zone coverage within designated areas to record activity or detect motion near entryways or around registers and loading docks within each camera's field of view. Customize sensitivity in each zone for greater control and even set Motion and Audio Detection Alerts to trigger a connected audible alarm (on select models).



16-Channel Video Management Software (VMS)

Unlike proprietary NVRs and DVRs that are expensive to purchase, maintain and upgrade, EnGenius Video Management Software comes free with all Photon Series IP Surveillance Cameras, further enhancing the line's affordability and lower total cost of ownership.



- > Optional split-screen camera view
- > Monitor up to 16 cameras simultaneously
- > View live monitoring, record video and playback options
- > Quick search of archived video via time bar

Enterprise Viewing Capacity







EnGenius VMS Software allows personnel to easily monitor the entire camera network, whether in a multi-building environment or at an entirely separate location. View feeds from up to 16 cameras concurrently, in real-time, and plan for future expansion to 32 or 64-channel capacities with future software upgrades, available via www.engeniustech.com.

Conduct basic configuration and initiate firmware upgrades right from your desktop and import your office building's floor plan to create a camera location map through eMap. Schedule recordings based on time or date, such as after hours or when shipments are due to arrive. Setup and configuration is streamlined with VMS' Discovery Tool, which quickly locates EnGenius IP Cameras.



- > At-a-glance floor plan view
- > Visible monitoring coverage for easy deployment
- > Quick view - monitor on floor plan with the click of a mouse

Photon Series IP Surveillance Cameras

						
Models	EDS5250	EDS5110	EDS5255	EDS5115	EDS6255	EDS6115
Camera Type	Bullet	Bullet	Bullet	Bullet	Mini-Dome	Mini-Dome
Progressive Scan CMOS Image Sensor	1 /2.7" 2-Megapixel	1/4" 1-Megapixel	1 /2.7" 2-Megapixel	1/4" 1-Megapixel	1 /2.7" 2-Megapixel	1/4" 1-Megapixel
LAN Interface	Wired	Wired	Wired/Wireless 802.11b/g/n	Wired/Wireless 802.11b/g/n	Wired/Wireless 802.11b/g/n	Wired/Wireless 802.11b/g/n
Ethernet Ports	1 x 10/100Mbps	1 x 10/100Mbps	1 x 10/100Mbps	1 x 10/100Mbps	1 x 10/100Mbps	1 x 10/100Mbps
Weatherproof	Yes (indoor/outdoor)	Yes (indoor/outdoor)	Yes (indoor/outdoor)	Yes (indoor/outdoor)	No (indoor only)	No (indoor only)
Night Vision	To 85-ft.	To 32-ft.	To 85-ft.	To 32-ft.	To 49-ft.	To 32-ft.
IR LEDs	12-pieces	12-pieces	12-pieces	12-pieces	12-pieces	12-pieces
HD Resolution	1920 x 1080P	1020 x 720P	1920 x 1080P	1020 x 720P	1920 x 1080P	1020 x 720P
Frame Rate	30 fps	30 fps	30 fps	30 fps	30 fps	30 fps
Motion Detection	✓	✓	✓	✓	✓	✓
Field of View (diagonal)	120-degrees	62-degrees	120-degrees	62-degrees	120-degrees	86.8-degrees
Wide Dynamic Range Technology	✓	✓	✓	✓	-	-
802.3af-PoE Compliant	✓	✓	✓	✓	✓	✓
On-board MicroSD	-	-	-	-	✓	✓
Built-in Microphone	-	-	-	-	✓	✓
Remote Access via EnViewer Mobile App	✓	✓	✓	✓	✓	✓
Email Notifications	✓	✓	✓	✓	✓	✓
Included VM Software	✓	✓	✓	✓	✓	✓

Technical Specifications IP Cameras

Type EDS5110 / EDS5115 / EDS5250 / EDS5255 Bullet EDS6115 / EDS6255 Mini-Dome	F.O.V. EDS5110 / EDS5115 62° (diagonal) EDS6115 86.8° (diagonal) EDS5250 / EDS5255 / EDS6255 120° (diagonal)	IR Illuminator 12 pc IR Illuminator LEDs, Effective up to 32ft/10m EDS5110 / EDS5115 / EDS6115 Up to 32-feet/10 meters EDS5250 / EDS5255 Up to 85-feet/25 meters EDS6255 Up to 49-feet/15 meters
Image Sensor EDS5110 / EDS5115 / EDS6115 1/4" 1-Megapixel Progressive Scan CMOS Image Sensor EDS5250 / EDS5255 / EDS6255 1 /2.7" 2-Megapixel Progressive Scan CMOS Image Sensor	Day/Night Removable Mechanical IR-Cut Filter	Shutter Time EDS5110 / EDS5115 / EDS6115 1/7.5 sec. to 1/24,000 sec. EDS5250 / EDS5255 / EDS6255 1/2.5 sec. to 1/10,000 sec.
Lens Fixed Board Lens Fixed-Focus EDS5110 / EDS5115 4 mm @ F1.5 EDS6115 3.3 mm @ F1.8 EDS5250 / EDS5255 / EDS6255 2.8 mm @ F1.8	Minimum Illumination EDS5110 / EDS5115 Color (IR-Off): 0.5 lux @ F1.5 B/W (IR-On): 0 lux @ F1.5 EDS6115 Color (IR-Off): 0.5 lux @ F1.8 B/W (IR-On): 0 lux @ F1.8 EDS5250 / EDS5255 / EDS6255 Color (IR-Off): 0.01 lux @ F1.8 B/W (IR-On): 0 lux @ F1.8	

Technical Specifications IP Cameras

Physical Interface (All-In-One Cable)

EDS5110 / EDS5115 / EDS5250 / EDS5255

1 x Cable Management Bracket

1 x All-In-One Cable

1 x RJ45 10/100 Base-T (802.3af PoE)

1 x Reset Button

1 x Alarm-In/Out

EDS5115 / EDS5255

1 x DC Jack (12V/1A)

EDS6115 / EDS6255

1 x Micro SD/SDHC Slot/Reset Button

1 x Manual Pan/Tilt Lens Tool

1 x Manual Pan/Tilt Adjuster

1 x Built-In Microphone

1 x All-In-One Cable

1 x RJ45 10/100 Base-T (802.3af PoE)

1 x DC Jack (12V/1A)

1 x Reboot/WPS/Reset Button

Power Input

Power Input: 12V/1A/PoE 48V

Video

Compression

H.264/MPEG4/MJPEG

Stream

2x Video Streams

Frame Rates

EDS5110 / EDS5115 / EDS6115

Up to 30 fps at 1280 x 720p

EDS5250 / EDS5255 / EDS6255

Up to 30 fps at 1920 x 1080p

Image Settings

Adjustable Image Size, Quality & Bit Rate

EDS5110 / EDS5115 / EDS5250 / EDS5255

WDR (Wide Dynamic Range) Technology

Configurable

Brightness

Sharpness

Contrast

White Balance

Saturation

Exposure

AGC/AWB/AES

Flip & Mirror

Time Stamp & Text Caption Overlay

Auto/Manual Day & Night Mode

EDS6115 / EDS6255

Audio

Audio Streaming

1-Way

EDS6115 / EDS6255 continued

Compression

G.711

Interface

Built-In Microphone

Networking

Network

10/100 Mbps Ethernet, RJ-45

Power-over-Ethernet (PoE 802.3af class 2)

EDS5115 / EDS6115 / EDS5255 / EDS6255

Wireless Standard

IEEE 802.11b/g/n

Antenna

EDS5115 / EDS5255 2 dBi High-Gain External Antenna

EDS6115 / EDS6255 3 dBi High-Gain Internal Antenna

EnGenius DDNS

Auto NAT Pass Through/ UPnP Traversal

Protocol

IPv4, TCP, UDP, DHCP, NTP, DNS, DDNS, SMTP, FTP, HTTP, UPnP, NFS/Samba client, QoS/DSCP, RTP, RTSP, 3GPP, PPPoE

ONVIF Compatible (Profile S)

Security

Admin/User Account Level

Password Protection

EDS5115 / EDS6115 / EDS5255 / EDS6255

WEP/WPA/WPA2-PSK

Schedule Recording

Alarm & Event/Recording

Event Trigger

Motion/Alarm Input Detection

Event Notification

Email/Push Notifications

Event Actions

File Upload to NFS/SAMBA/FTP/SMT, EnGenius Cloud & Play Audio

Video Playback (PC/iPhone®/Android™)

EnGenius Simple Smart Recording (Only for EnGenius Cloud Series Routers/Gateways)

Video Buffer

5-Seconds Pre-Alarm & Post-Alarm

Mobile Apps Supported

iPhone/iPad/Android Devices

Common Key Features

- > Camera
 - Progressive Scan CMOS
 - Fixed-Focus Lens
 - Day/Night: Built-In Mechanical IR-Cut Filter
- > Video
 - High-Definition 1080p at 30fps
 - Compression: H.264/MPEG/MJPEG
 - Simultaneous Dual-Stream Video
 - Image Settings: Adjustable Image Size, Quality, & Bit Rate Configurable Brightness, Sharpness, Contrast, Saturation, White Balance, & Exposure
- > Network
 - 10/100 Mbps Ethernet
 - 802.11n Wireless
- > Security
 - Wireless Password Protection
 - IP Address Filtering
 - User Access Log
- > Alarm & Event/Recording
 - Alarm: Motion Detection
 - Event Actions: File Upload to FTP, SMB, SMTP, Mobile App, EnGenius Cloud Router
 - Notification: Email, Push Notifications (Mobile Apps Only)
 - Video Playback (PC/iPhone®/iPad®/Android™)
 - EnGenius Smart Recording (EnGenius Cloud Series Routers Only)
 - Mobile Apps Supported: iPhone®/iPad®/Android™ Devices

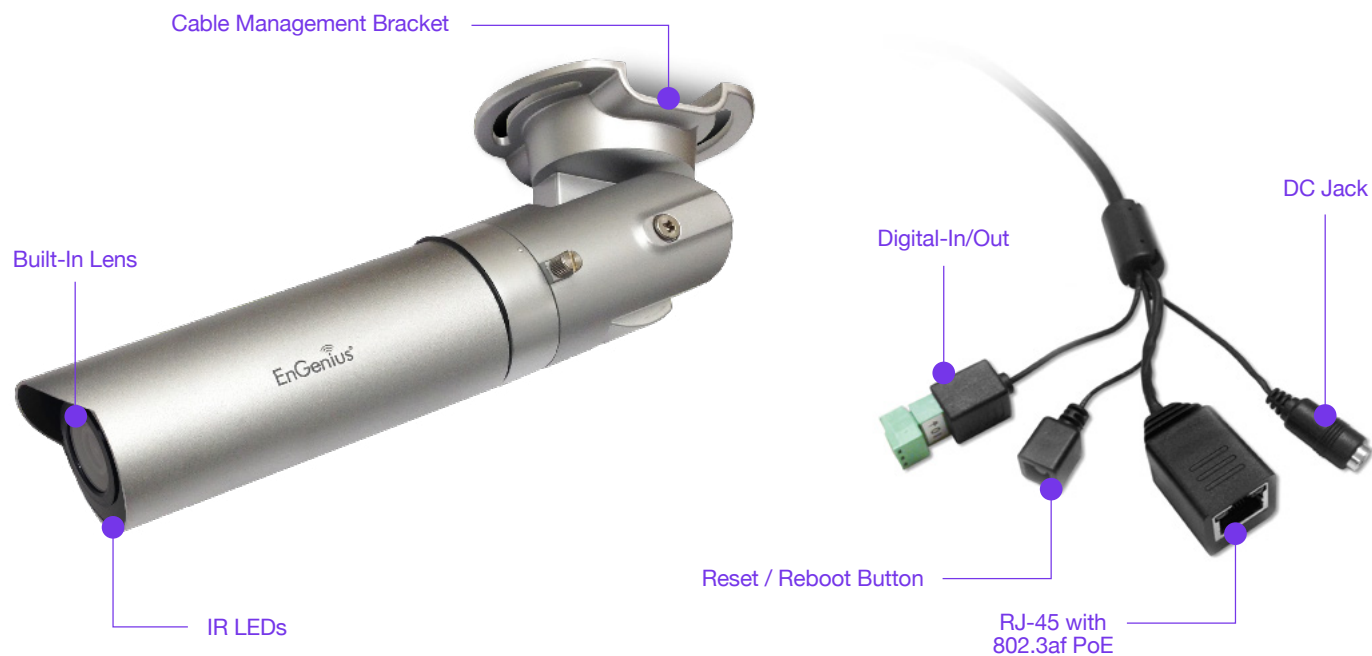
Technical Specifications IP Cameras continued

Video Management Software
Viewing System Requirements
Operating System
Microsoft Windows XP/2000/2003/Vista/2007/2008
Web Browsers
IE, Safari, Chrome, Firefox, Opera
View Clients
Live Viewing For up to 5 Clients
Environmental & Physical
Temperature Range
EDS5110 / EDS5115 / EDS5250 / EDS5255
Operating: -4° F to 122° F (-20°C to 50° C)
Storage: -40° F to 140° F (-40° to 60° C)
EDS6115 / EDS6255
Operating: 32° F to 122° F (0°C to 50° C)
Storage: -4° F to 140° F (-20° to 60° C)
Humidity (non-condensing)
EDS5110 / EDS5115 / EDS5250 / EDS5255
Operating: 80% or less
EDS6115 / EDS6255
Operating: 80% or less
Waterproof
EDS5110 / EDS5115 / EDS5250 / EDS5255
IP66-Rated Enclosure

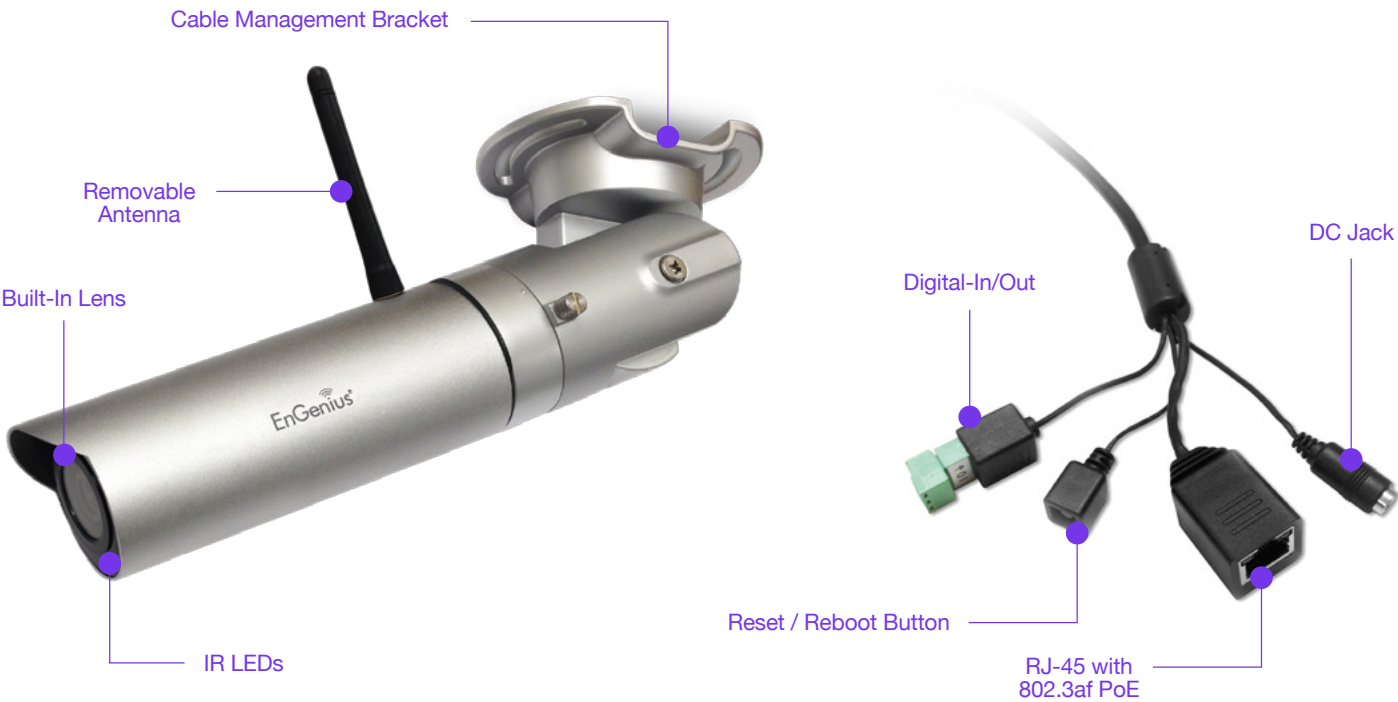
Dimensions & Weights
EDS5110 / EDS5115 / EDS5250 / EDS5255
Device with Bracket
Weight: .69 lbs. (312 g)
Length: 8.2" (208 mm)
Width: 2.5" (63 mm)
Height: 2.9" (73 mm)
EDS6115 / EDS6255
Weight: 0.50 lbs. (226 g)
Width: 2.57" (65 mm)
Length: 3.77" (95 mm)
Height: 2.57" (65 mm)
Packaging
EDS5110 / EDS5115 / EDS5250 / EDS5255
Weight: 1.74 lbs. (789 g)
Width: 5.7" (144 mm)
Length: 10.82" (274 mm)
Height: 4.72" (119 mm)
EDS6115 / EDS6255
Weight: 1.4 lbs. (653 g)
Width: 3.7" (93 mm)
Length: 10.3" (261 mm)
Height: 5.7" (144 mm)

Package Contents:
EDS5110 / EDS5115 / EDS5250 / EDS5255
Bullet IP Camera
Mounting Kit
RJ-45 Ethernet Cable (10/100 BASE-T 802.3af PoE)
Quick Installation Guide
QR Code Label
Terminal Block for Alarm Input/Output
Power Adapter
EDS5115 / EDS5255
Detachable Antenna
EDS6115 / EDS5255
Wi-Fi Dome IP Camera
Mounting Kit
RJ-45 Ethernet Cable (10/100 Base-T 802.3af PoE)
Quick Installation Guide
QR Code Label
Power Adapter
CD with User Manual
Certifications
FCC, CE
Warranty
1 Year

EDS5110 / EDS5250 IR Bullet IP Cameras



EDS5115 / EDS5255 Wi-Fi Bullet IP Cameras



EDS6115 / EDS6255 Wi-Fi Mini Dome IP Cameras



EnGenius Wireless IP Surveillance System

				
Models	EDS8012	EDS8015	EDS8022	EDS8025
Standards	802.11b/g/n	802.11a/n	802.11b/g/n	802.11a/n
Frequency	2.4 GHz	5 GHz	2.4 GHz	5 GHz
Data Rates	300 Mbps	300 Mbps	300 Mbps	300 Mbps
Radio Chains/Streams	2 x 2	2 x 2	2 x 2	2 x 2
RF Output Power	26 dBm	26 dBm	26 dBm	26 dBm
Ingress Protection (AP/Camera)	55/66	55/66	55/66	55/66
Fast Ethernet (10/100 Mbps)	•	•	•	•
Secondary Ethernet Port	•	•	•	•
Integrated Antennas	13 dBi	19 dBi	13 dBi	19 dBi
Camera	1 MP	1 MP	2 MP	2 MP
IR Illumination	To 32-ft./10m	To 32-ft./10m	To 82-ft./25m	To 82-ft./25m
F.O.V	60° (diagonal)	60° (diagonal)	120° (diagonal)	120° (diagonal)

Technical Specifications Long-Range Wireless Outdoor Access Point/Client Bridge

RF Frequency Band EDS8012 / EDS8022 2.4 GHz EDS8015 / EDS8025 5 GHz	EDS8012 / EDS8022 continued 2.4 GHz (P2) - Peak Antenna Gain: 13 dBi - Polarization: Linear - Horizontal Beam Width: 61° - Elevation Beam-Width: 35° - VSWR: 1:2.0 EDS8015 / EDS8025 5 GHz (P1) - Average Antenna Gain: 19 dBi - Polarization: Linear - Azimuth Beam Width: 30° - Elevation Beam-Width: 18° - VSWR: 1:2.0 5 GHz (P2) - Peak Antenna Gain: 19 dBi - Polarization: Linear - Horizontal Beam Width: 18° - Elevation Beam-Width: 30° - VSWR: 1:2.0	Data Rate Up to 300 Mbps
Standard EDS8012 / EDS8022 IEEE 802.11b/g/n EDS8015 / EDS8025 IEEE 802.11a/n		Transmit Power Up to 26 dBm Up to 400 mW Max Power is limited by regulatory power
Physical Interface AP Device 2 x 10/100 BASE-T Ethernet Ports 1 x Port supports 24V Proprietary PoE Input 1 x Port supports extension of an Internet signal 1 x Reset Button LED Signal 1 x Power 1 x LAN 1 1 x LAN 2 1 x WLAN		Supported Radio Technologies EDS8012 / EDS8022 802.11b: Direct-Sequence Spread-Spectrum (DSSS) 802.11n: Orthogonal Frequency-Division Multiplexing (OFDM) 802.11n: with 5/10/20/40 MHz Channel Width 802.11n: with 5/10/20 MHz Channel Width 802.11b/g: with 5/10/20 MHz Channel Width EDS8015 / EDS8025 802.11a/n: Orthogonal Frequency-Division Multiplexing (OFDM) 802.11n with 5/10/20/40 MHz Channel Width 802.11a with 5/10/20 MHz Channel Width 802.11a/n: BPSK, QPSK, 16-QAM, 64-QAM
Antenna Internal High-Gain Directional Antenna EDS8012 / EDS8022 2.4 GHz (P1) - Average Antenna Gain: 13 dBi - Polarization: Linear - Azimuth Beam Width: 67° - Elevation Beam-Width: 33° - VSWR: 1:2.0	Operation Modes Access Point Client Bridge WDS Bridge Radio I EDS8012 / EDS8022 11b/g/n: 2.412-2.472 GHz EDS8015 / EDS8025 11a/n: 5.180-5.825 GHz	Supported Data Rates (Mbps) EDS8012 / EDS8022 802.11b: 1, 2, 5.5, 11 802.11g: 6, 9, 12, 18, 36, 48, 54 802.11n: 6.5~300 (MCS0 to MCS15)

Technical Specifications Long-Range Wireless Outdoor Access Point/Client Bridge continued

Supported Data Rates (Mbps) continued EDS8015 / EDS8025 802.11a: 6, 9, 12, 18, 36, 48, 54 802.11n: 6.5~300 (MCS0 to MCS15)	QoS Compliant with IEEE 802.11e Standard	Security continued Wireless STA (Client) Connection List Reports various information in a timely manner as required by the administrator
Power Power Source (PoE Injector): - 24V/.6A Proprietary Compliant Source - Active Ethernet (Power over Ethernet, PoE)	Save Configurations as Default Saves the customized configuration as the default value for different customer demands	Environmental & Physical Operating Temperature: -4 °F to 140 °F (-20 °C to 60 °C) Storage: -22 °F to 176 °F (-30 °C to 80 °C)
Power Consumption EDS8012 / EDS8022 7.2 W EDS8015 / EDS8025 7 W	Client Traffic Status Reports various information in a timely manner as required by the administrator	Humidity (non-condensing) Operating: 90% or less Storage: 90% or less
Management Auto Channel Selection - Settings varies by Regulatory Domains	Control Features RADIUS Accounting Helps operators to offload 3G to Wi-Fi seamlessly	Waterproof IP55-Rated Enclosure
SSIDs BSSID Supports Four (4) SSIDs	CLI Comments Support Settings vary by Regulatory Domains	Certifications FCC, CE
VLAN Tagging Independent VLAN settings can be enabled/disabled Any packet that enters the device without a VLAN tag will have a VLAN tag inserted via a PVID (Ethernet Port VID) VLAN Pass-through over WDS Bridge	Distance Control (Ack Timeout) Multicast Supported	Dimensions & Weights AP/Client Bridge Device Weight: 1.03 lbs. (0.47kg) Depth: 7.4" (190mm) Height: 1.5" (38mm)
SNMP & MIB v1/v2c/v3 Support MIB I/II and Private MIB	Wi-Fi Scheduler Sets the Schedule for rebooting the device	
	Security WEP Encryption: 64/128/152 bit WPA/WPA2 Enterprise (WPA-EAP using AES) Hide SSID in Beacons MAC Address Filtering (up to 50 addresses) 802.1x Authenticator	

Technical Specifications 1-MP and 2-MP Day/Night Bullet IP Surveillance Camera

Camera Image Sensor EDS8012 / EDS8015 1/4" 1-Megapixel Progressive Scan CMOS Image Sensor EDS8022 / EDS8025 1/2.7" 2-Megapixel Progressive Scan CMOS Image Sensor	Minimum Illumination EDS8012 / EDS8015 Color (IR-Off): 0.5 lux @ F1.5 B/W (IR-On): 0 lux @ F1.5 EDS8022 / EDS8025 Color (IR-Off): 0.1 lux @ F1.8 B/W (IR-On): 0 lux @ F1.8	Shutter Time EDS8012 / EDS8015 1/7.5 sec. to 1/24,000 sec. EDS8022 / EDS8025 1/2.5 sec. to 1/10,000 sec.
Lens Fixed Board Lens EDS8012 / EDS8015 Fixed-Focus, 4 mm @ F1.5 EDS8022 / EDS8025 Fixed-Focus, 2.8 mm @ F1.8	IR Illuminator EDS8012 / EDS8015 12 pcs IR Illuminator LEDs, effective up to 32-ft./10m EDS8022 / EDS8025 12 pcs IR Illuminator LEDs, effective up to 82-ft./25m	Physical Interface (All-in-One Cable) 1 x Cable Management Bracket 1 x All-in-One Cable 1 x RJ45 10/100 Base-T (802.3af PoE) 1 x Reset Button 1 x Alarm-In/Out 1 x DC Jack (12V/1A)
F.O.V. EDS8012 / EDS8015 62° (diagonal) EDS8022 / EDS8025 120° (diagonal)		
Day/Night Removable Mechanical IR-Cut Filter		

Technical Specifications 1-MP and 2-MP Day/Night Bullet IP Surveillance Camera continued

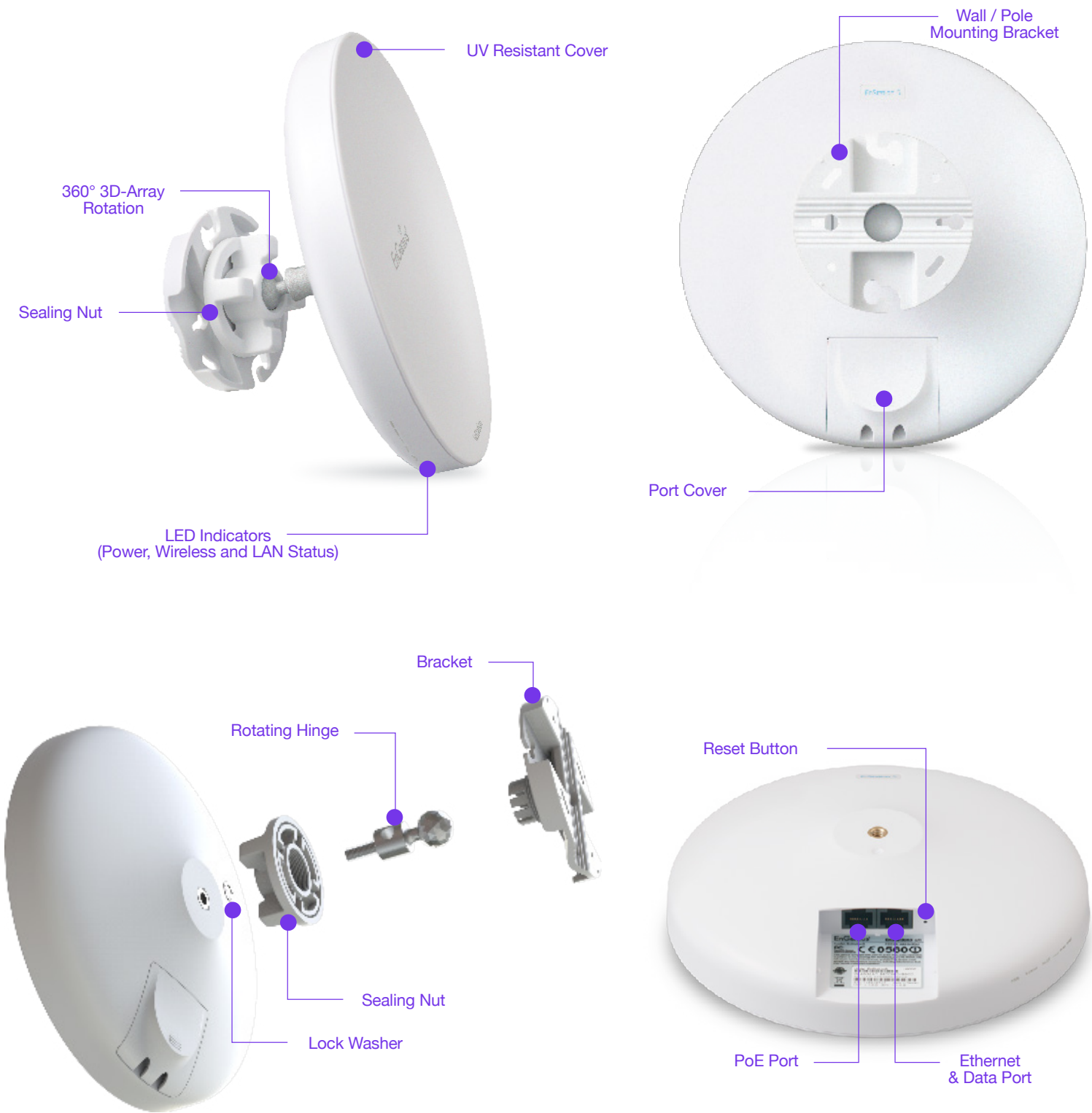
Power Input	Alarm & Event/Recording	Dimensions & Weights
Power Input: 12V/1A/, PoE 48V	Event Trigger	IP Camera Device with Bracket
	Motion/Alarm-In Detection	Weight: .69 lbs. (312 g)
Video	Event Notification	Length: 8.2" (208mm)
Compression	Email/Push Notifications	Width: 2.5" (63mm)
H.264/MPEG4/MJPEG	Event Actions	Height: 2.9" (73mm)
Stream	File Upload to NFS/SAMBA/FTP/SMT, EnGenius Cloud & Play Audio	
2x Video Streams	Video Playback (PC/iPhone®/Android™)	
Frame Rates	EnGenius Simple Smart Recording (Only for EnGenius Cloud Series Routers/Gateways)	EDS8012/EDS8015 Wireless IP Surveillance System
EDS8012 / EDS8015 Up to 30 fps at 1280 x 720	Video Buffer	Packaging
EDS8022 / EDS8025 Up to 30 fps at 1920 x 1080	5-seconds pre-alarm/post-alarm	Weight: 4.14 lbs. (1.88kg)
Image Settings	Schedule Recording	Width: 9.8" (249mm)
Adjustable Image Size, Quality & Bit Rate	Mobile Apps Supported	Length: 14" (363mm)
Configurable Brightness, Sharpness, Contrast, Saturation, Exposure	iPhone/iPad/Android devices	Height: 6.1" (155mm)
AGC/AWB/AES	Video Management Software	
Flip & Mirror	Viewing System Requirements	Package Contents:
Time Stamp & Text Caption Overlay	Operating System	• 1-MP or 2-MP Bullet IP Camera
Manual/Auto Day & Night Mode	Microsoft Windows XP/2000/2003/Vista/2007/2008	• 12V/1A Power Adapter
WDR (Wide Dynamic Range) Technology	Web Browsers	• Mounting Kit
	IE, Safari, Chrome, Firefox, Opera	• RJ-45 Ethernet Cable
Networking	View Clients	• Outdoor AP/Bridge
Network	Live viewing for up to 5 Clients	• PoE Injector (EPE-1212) with Power Adapter (24V/.6A)
10/100 Mbps Ethernet, RJ-45		• Pole/Wall Mounting Kit
Power-over-Ethernet (PoE 802.3af class 2)	Environmental & Physical	• Mounting Screw Set
EnGenius DDNS	Temperature Range	• Quick Installation Guide
Auto NAT Pass Through/UPnP Traversal	Operating: -4° F to 122° F (-20°C to 50° C)	
	Storage: -40° F to 140° F (-40° to 60° C)	Certifications
Protocol		FCC, CE
IPv4, TCP, UDP, DHCP, NTP, DNS, DDNS, SMTP, FTP, HTTP, UPnP, NFS/Samba client, QoS/DSCP, RTP, RTSP, 3GPP, PPPoE	Humidity (non-condensing)	
ONVIF Compatible (Profile S)	Operating: 80% or less	Warranty
Security	Waterproof	1 Year
Admin/User account level	IP66-Rated Enclosure	

Compatible Products

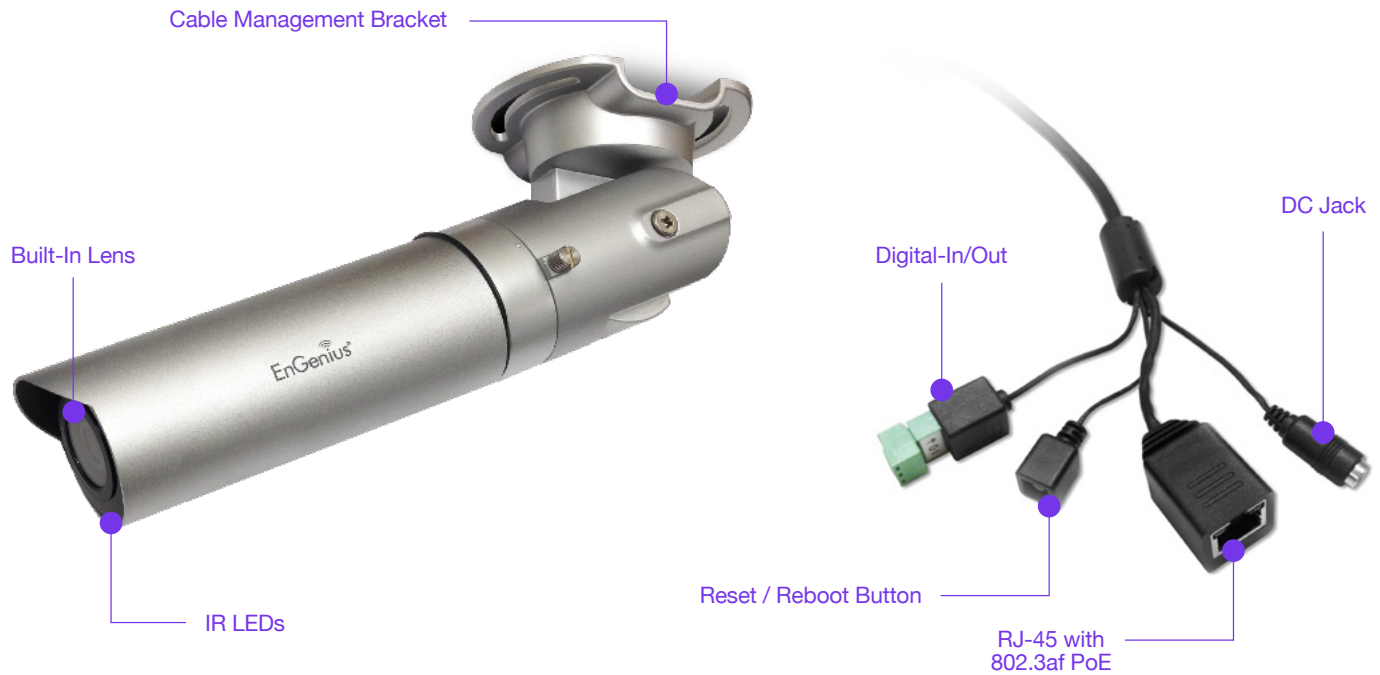
Products	Product Description
EnStation2	Long-Range Wireless 2.4 GHz Outdoor AP/Bridge
EnStation5	Long-Range Wireless 5 GHz Outdoor AP/Bridge
EDS5110	1-MP Day/Night Bullet IP Surveillance Camera
EDS5250	2-MP Day/Night Bullet IP Surveillance Camera

Wireless IP Surveillance System

Outdoor AP/Bridge



Bullet IP Camera



EnGenius Technologies | 1580 Scenic Ave. Costa Mesa, CA 92626

Email: partners@engeniustech.com | Phone: 888-735-7888 | Website: engeniustech.com

Features and specifications subject to change without notice. Trademarks and registered trademarks are the property of their respective owners. For United States of America: Copyright © 2016 EnGenius Technologies, Inc. All rights reserved.
Version 2.0 - 02/04/16

EnGenius®

In the United States of America, use of video or audio equipment for recording the image of a person without their knowledge and consent is prohibited in certain states, commonwealths, municipalities or jurisdictions. The end user assumes all liability for compliance with state, local and federal laws. Product features and specifications or industrial design are subject to change without notice, and actual product appearance may differ from what is depicted on product packaging, on websites, or in marketing material. EnGenius Technologies, Inc. is not responsible for liability for any property loss or damage in any site or deployment where EnGenius camera products are used. Trademarks and registered trademarks are the property of their respective owners. User capacity performance results may vary based on topology configuration, structural and architectural elements, environmental factors, type of data traffic, RF capabilities of client devices, distance, RF interference in the operating environment and other factors. For United States of America: Copyright © 2016 EnGenius Technologies, Inc. All rights reserved.