



CCT™ Clear Connection Tool

Fast, Effective
Fiber Connector
End-Face Cleaning



INTRODUCING:

CCTTM Clear Connection Tool

- Easy to use for quick and reliable cleaning
- Uses Combination CleaningTM process for first time cleaning, every time
- Effective for the widest range of contaminants
- Rugged and durable, great for all work sites
- Up to 800 cleanings per kit – 33% more than other tools



Versatile Fiber Optics Connector Cleaning



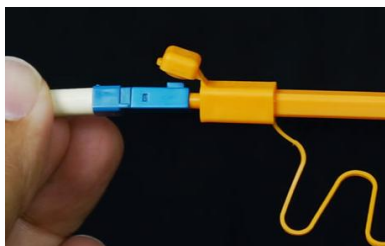
**Cleans connectors
on back plane and
on jumpers**



Match Your Connector Types

MU
LC

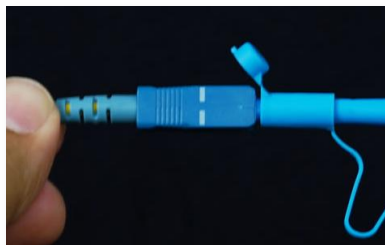
1.25mm



Part #CCT-125

FC
SC ST

2.5mm



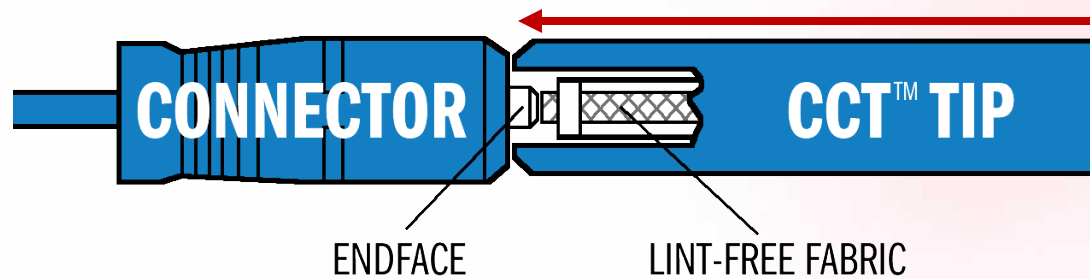
Part #CCT-250

MPO



Part #CCT-MPO

How CCT™ Works

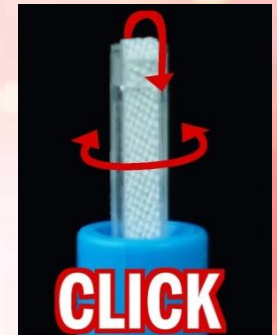


1. Place CCT cleaning tip over connector ferrule
2. Press tool until you hear a “click”
 - Protective CCT shield retracts
 - Fabric comes into contact with ferrule endface
 - Lint-free fabric advances, wiping against endface
 - 1.25mm and 2.5mm tips rotate for additional cleaning action

MU
LC
1.25mm



FC
SC ST
2.5mm



MPO



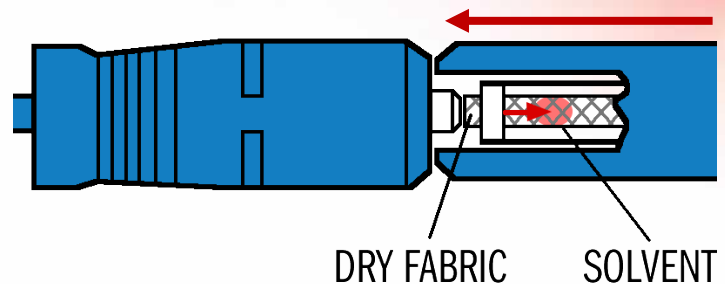
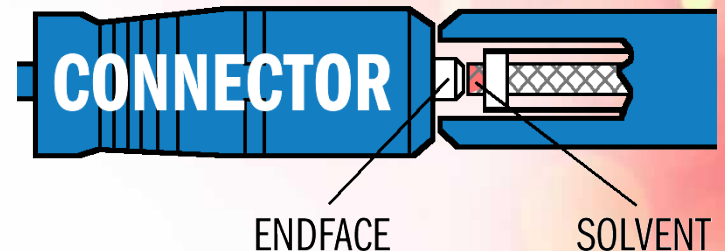
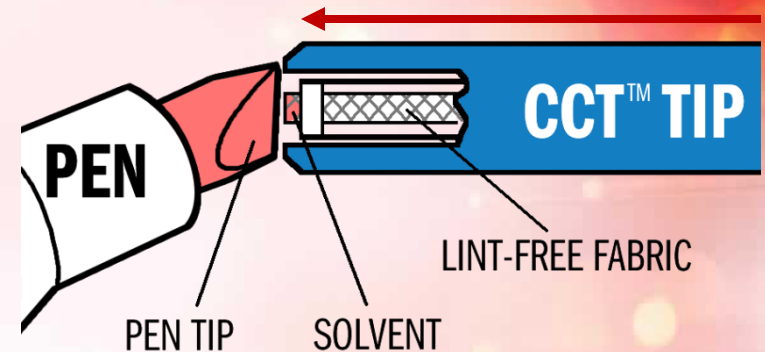
Is There An Even BETTER Way?

- **Dry cleaning process**
 - Mechanical action places a dry cleaning material in contact with the end face
 - Con: Doesn't dissolve soil and generates static
- **Wet-To-Dry cleaning process**
 - Solvent delivery with a mechanical vacuum mechanism or other drying means
 - Con: Floods connector, drawing up additional soil from 5th zone
- **Combination Cleaning™ process**
 - Uses minimal quantity of precision fiber optic cleaner with interactive drying method
 - First-time cleaning without the cons



CCTTM With Combination CleaningTM

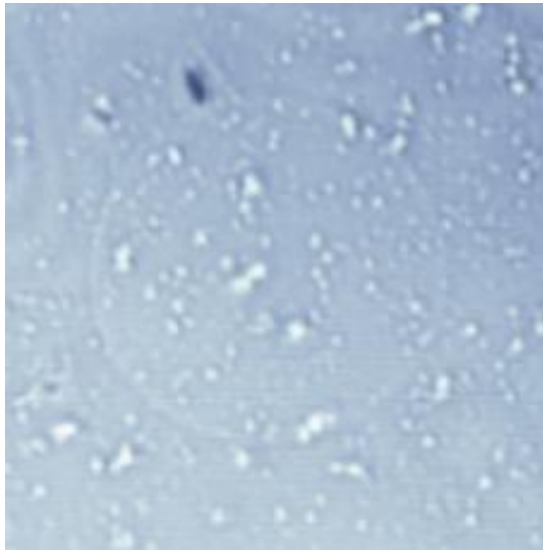
- 1. Lightly wet CCT tip with MX Precision Cleaning Pen tip**
- 2. Place CCT cleaning tip over connector ferrule**
- 3. Press tool until you hear a “click” & repeat 1-2 more times**
 - Lightly wetted fabric contacts endface
 - Solvent breaks down soil
 - As fabric advances, wetted fabric is replaced with dry fabric, drying remaining cleaner



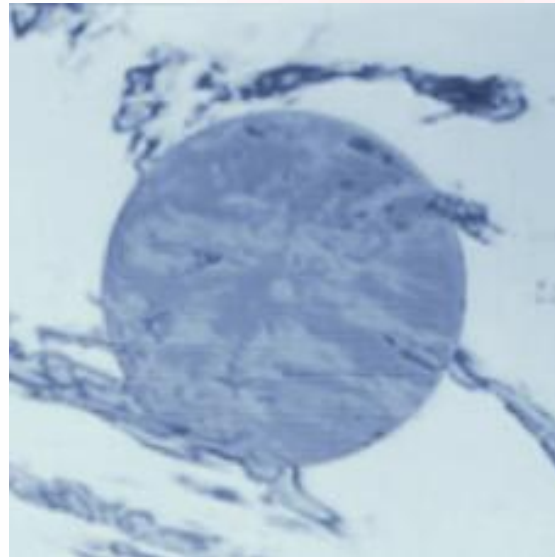
Combination Cleaning™ Process

Example #1 – Carbon Black

Before cleaning



Dry cleaning (probe tool)



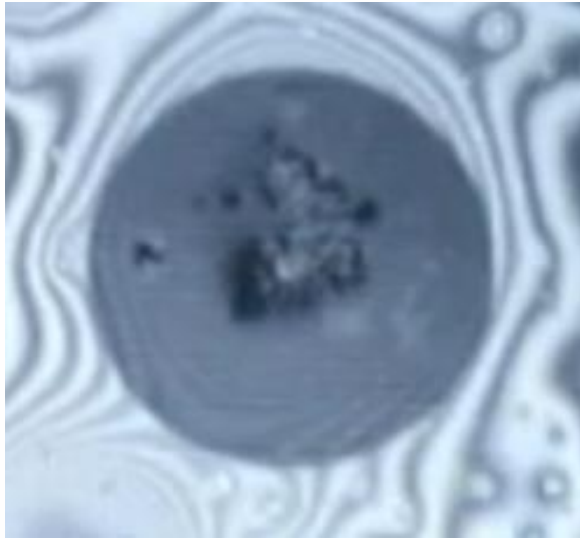
Combination Cleaning™



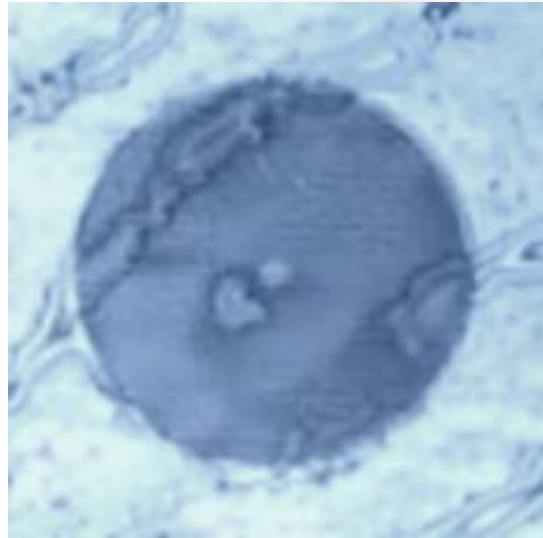
Combination CleaningTM Process

Example #2 - Fingerprint

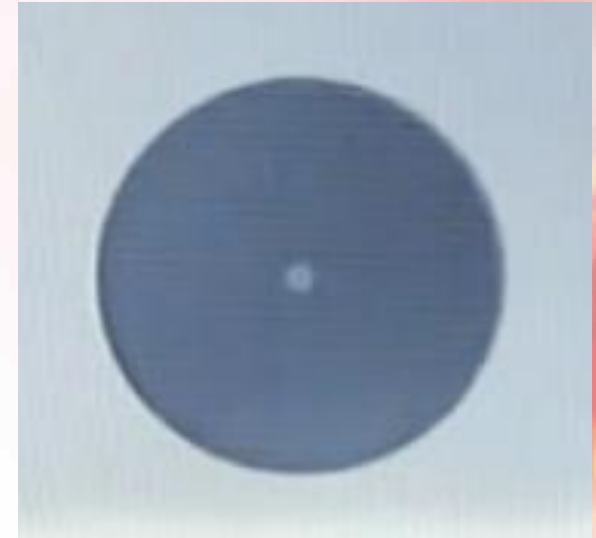
Before cleaning



Wet-to-dry (w/IPA)



Combination CleaningTM

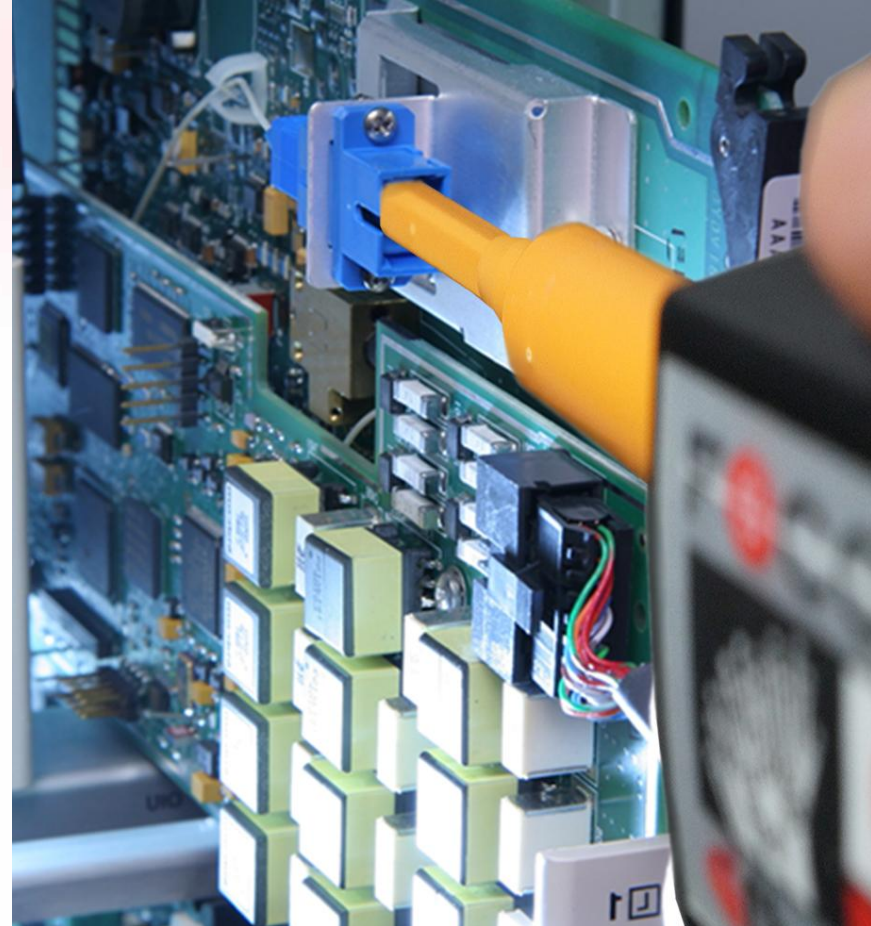


Combination Cleaning™ Process

- Exceeds IEC 61300-3-35 & IEC TR 62627-1
- Written into Telcordia GR-2923-CORE
- Simple, easy to train, repeatable
- Zone-5 of the end face is never flooded with excess cleaner
- Designed to move contamination away from the initial point of contact
- Removes the widest range of contamination, debris and combinations – including static

Achieve First Time Cleaning...

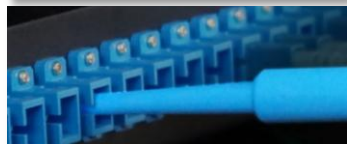
- Of the widest range of debris, contamination and soil
- From the complete endface of all connection types
- Without residual contamination or re-contamination



CCT[™] Features



Flip-top for
cleaning patch
cord connectors



Remove top for
backplane cleaning

Extendable cleaning tip for
hard-to-reach connectors

Wrist strap to prevent
dropping during field
install / maintenance

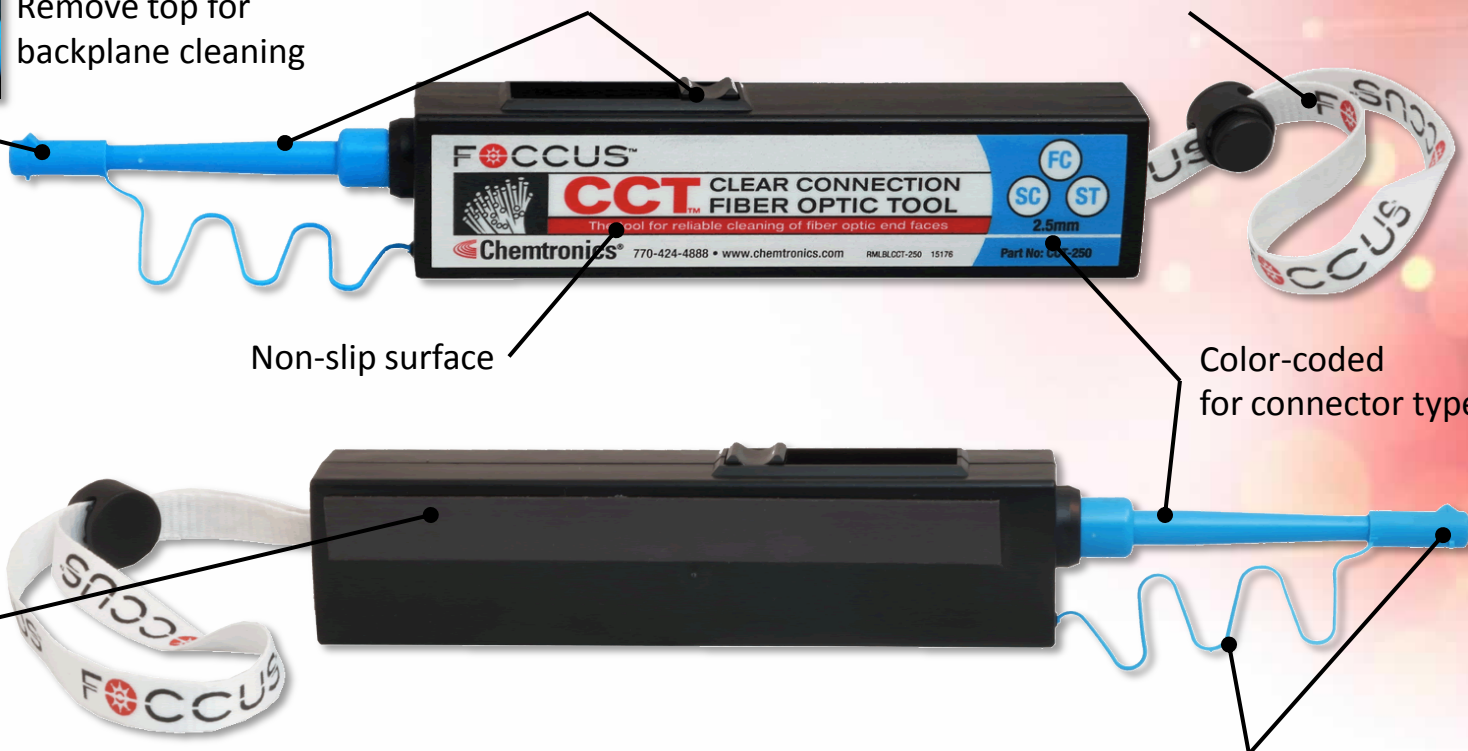
Non-slip surface

Color-coded
for connector type



Magnet strip – leave on rack during or
after datacom install / maintenance

Protective tip cap
tethered for loss prevention



Convenient Packaging

Tool Only



Part #'s
CCT-125
CCT-250
CCT-MPO

Cleaning Kit

w/ MX Precision Cleaner Pen



Part #'s
CCT-125KIT
CCT-250KIT
CCT-MPO

Durable, Water-Resistant Package



Detailed Instructions

FOCCUS CCT.		CLEAR CONNECTION TOOL	
Precautions: <ul style="list-style-type: none"> Be sure to turn off any laser sources before inspecting any fiber connectors, optical components, or bulkheads. Always wear the appropriate safety glasses. Be sure laser safety glasses meet federal and state regulations and are matched to the lasers used in your environment. Never look into a fiber or bulkhead while the system lasers are on, and never connect a fiber to a bulkhead while the system lasers are on. Always have a way to inspect bulkheads or receptacle devices before removing them. Never touch the end face of the fiber connectors. 		Combination Cleaning* For Optimal Fiber Optic Cleaning 	
Directions for use: <ol style="list-style-type: none"> Extend the cleaning tip by pushing the thumb notch and sliding the tip forward. Depress the felt tip of the MX pen on a hard, clean surface to start cleaning solution flow. Position tool tip by: <ol style="list-style-type: none"> Remove the tool cap to expose cleaning tip Touch tool opening to pen tip Depress tool to find "stop" or until resistance is felt Hold for 3 seconds <p><i>Do not over-rotate the tip!</i></p> Insert the cleaning guide directly into the bulkhead to be cleaned. Push in gently until tool clicks. Recap tool and pen when finished. For cleaning a patch cord connector, place cap back onto the tool tip. Flip open top and push connector and face onto maintained cleaning area. Depress tool until clicking is heard. Remove connector. Recap tool and pen when finished to maintain cleanliness. 		The Clear Connection Tool* with Combination Cleaning* process gives first time cleaning for all common soils: <ul style="list-style-type: none"> Finger oils Mineral oils and grease Gels & pulling lubricants Dust, dirt & carbon Water & salt residue & more <p>Combination Cleaning™ is industry proven, exceeding IEC 61300-3-35, IEC TR60207-01, and meeting Telcordia GR-3263-CORE and SAE Aerospace A66521.</p> <p>Dry media can smear oils, not fully remove dry particulates, and can create a static field that attracts and holds onto additional debris. Wet cleaning can overhydrate connectors, drawing up contamination from around the ferrule as viewed in IEC 61300-3-25. The result is unreliable cleaning processes that provide unreliable results. Without Combination Cleaning™, additional cleaning passes, replacement jumpers or connectors will be required.</p>	
<p>FOCCUS™ Combination Cleaning™. Clean first time... every time!</p> <p>NEED HELP? ...ASK THE EXPERTS! Chemtronics application specialists are available to identify the best solution for you. Call 800-645-5244 or e-mail askchemtronics@chemtronics.com.</p>			

More Combination Cleaning™ Supplies

Precision Cleaners

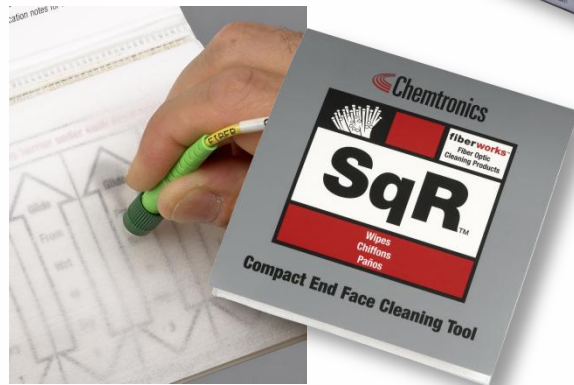


Wipes & Swabs



More Combination Cleaning™ Supplies

Cleaning Platforms



Cleaning Kits



CCT™ Clear Connection Tool

- Easy to use for quick and reliable cleaning
- Compatible with all major connector types
- Effective on a wide variety of soils
- Use with MX Precision Cleaning Pen and Combination Cleaning™ process



Clean Connectors The First Time... Every Time!