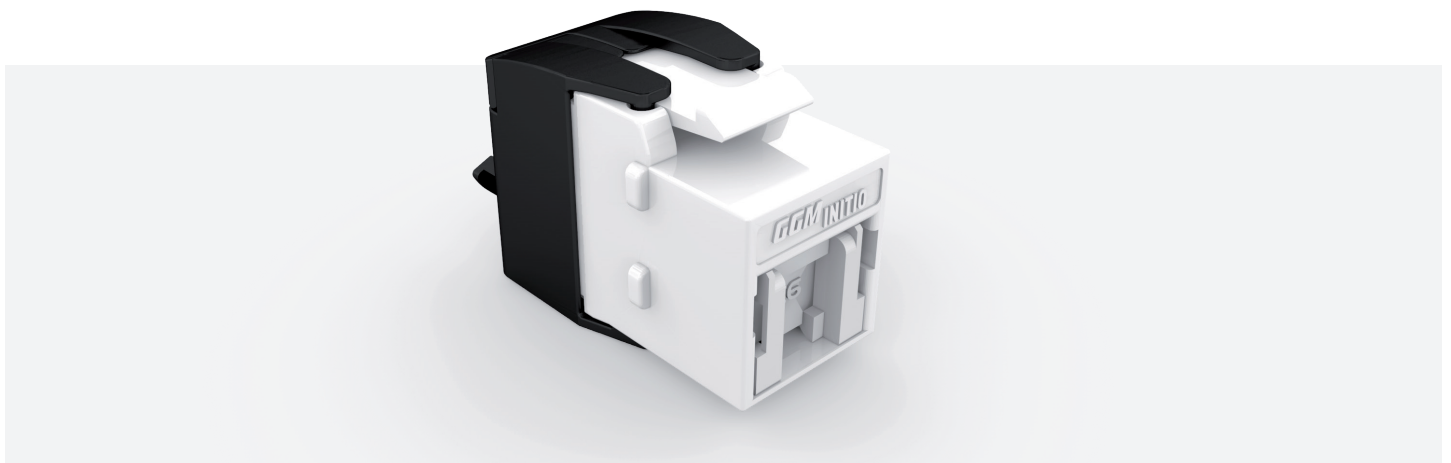


## INITIO RJ45 KEYSTONE JACK CAT6, UTP



Category 6 INITIO UTP keystone jacks have been designed to meet the need for today's high-bandwidth applications. These connectors are slim in profile for the highest density applications.

Special design features allow these jacks to be terminated without any specific tool and are rated for plug insertions providing for the highest level of system reliability. Independently verified it will support high speed protocols up to 5 Gigabit/s.

The Jack is backwards compatible to all preceding cabling categories, ensuring support of all IP applications.

### CHARACTERISTICS:

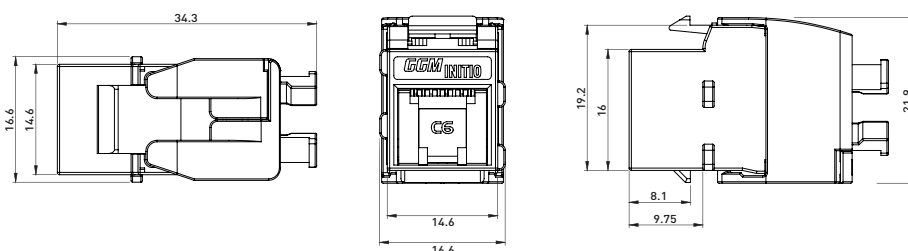
- Plastic body
- Slim profile
- Toolless termination
- Fully compatible with Gigamedia keystone accessories

### SUPPORTED APPLICATIONS:

- IEEE802.3:
- 5GBase-T, 2.5GBase-T, 1000Base-T (Gigabit Ethernet), 100Base-Tx, 10Base-T
- ANSI / TIA / EIA: 1000Base-Tx
- IEEE 802.3af/at/bt (PoE/PoE+/4PPoE)

### STANDARDS:

- ISO/IEC 11801
- EN 50173
- ANSI/TIA-568.2-D



PART NUMBER

**GGM INIC6UTLHW**

DESCRIPTION

GIGAMEDIA INITIO TOOLLESS KEYSTONE JACK, CAT6, UTP