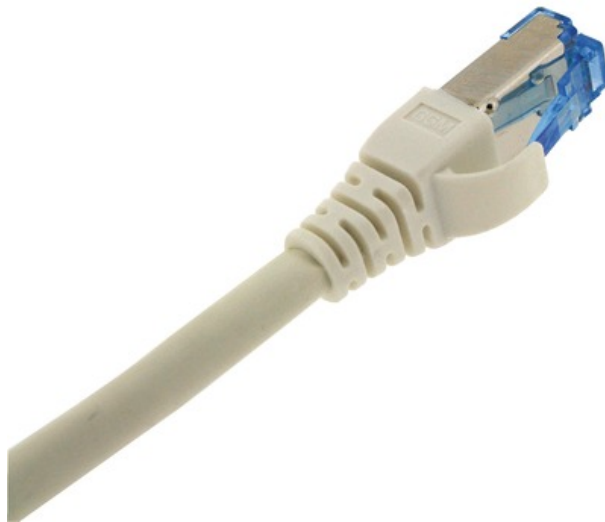




Patchcords CAT6A S/FTP LSZH 4 m white **GGM CAT6AS4MWH**



All Cat.6A screened patch cords incorporate short body blue plugs (50?) that use an integral pair manager to optimize performance and reducing untwisting of conductors within the plug. Slim Snagless molded boots are incorporated which increase protection of the plug latch, offer maximum strength construction.

Assembled in a controlled environment using advanced manufacturing process to insure stable quality and performance.

Patch cords are manufactured using Cat6A S/FTP 27AWG stranded cable for better flexibility.

Labels on patch cords provide identification of length, operator and quality control number.

100% patch cords are compliant tested after production.
Product under Third party testing program.

Specifications

- Category 6A S/FTP
- Individual foiled pair and TC overall shield
- Stranded plain anneal bare copper wire, 27AWG
- Standards:
 - ANSI/TIA/EIA-568-C.2,
 - ISO/IEC 11801 Ed.2.2
 - EN 50173-1, EN 50173-2 et EN 50173-5
 - ISO/IEC 24764
 - IEC 61935-2
- Applications :
 - IEEE 802.3 : 10Base-T ; 100Base-T ; 1000Base-T et 10Gbit Ethernet
 - IEEE 802.3at/af (PoE/PoE+)
- Frequency range: from 0 to 550 MHz
- Characteristic impedance: 100 ?
- LSZH (IEC 60332-1)
- Cable mark : GIGAMEDIA DELTA VERIFIED AWG27 ANSI/TIA-568-C.2 CAT6A S/FTP LSOH PIMF 10G ISO/IEC 11801 Ed 2.2 & IEC 61935-2
- Overall Diameter : 5,7 mm
- Slim snagless colored molded boots
- Individual label with unique ID included
- Available colors : White RAL9010 - Blue RAL5015 - Yellow RAL1021 - Green RAL6024 - Red RAL3018 - Black RAL9004 - Orange RAL2003