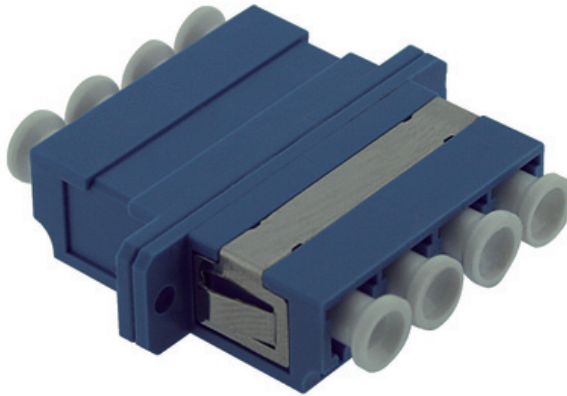




## LC quad singlemode adaptor **GGM RACLCLCQSM**



Adapters (or bulkheads) are used to connect two fibers (loaded with connectors i.e. pigtails, patchcords, ...) together. The central sleeve of adapters ensures fiber connectors are perfectly mated together to optimize Insertion Loss & reflectance.

### Specifications

- Plastic adaptor body
- Ceramic sleeve
- Color: blue