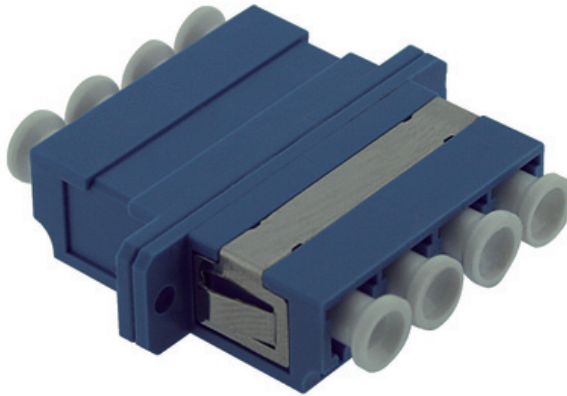




LC quad singlemode adapter **GGM RACLCLCQSM**



Fibre optic adapters (or bulkheads) are used to connect two connectors ferrules (eg pigtails, patchcords) together and ensure signal continuity. The central sleeve of the adapter guarantees perfect mechanical mating to optimize insertion loss & reflectance.

- Plastic body
- Ceramic sleeve
- Colour: blue