

Splice Cabinet Combination K1 + NC-350



Introduction

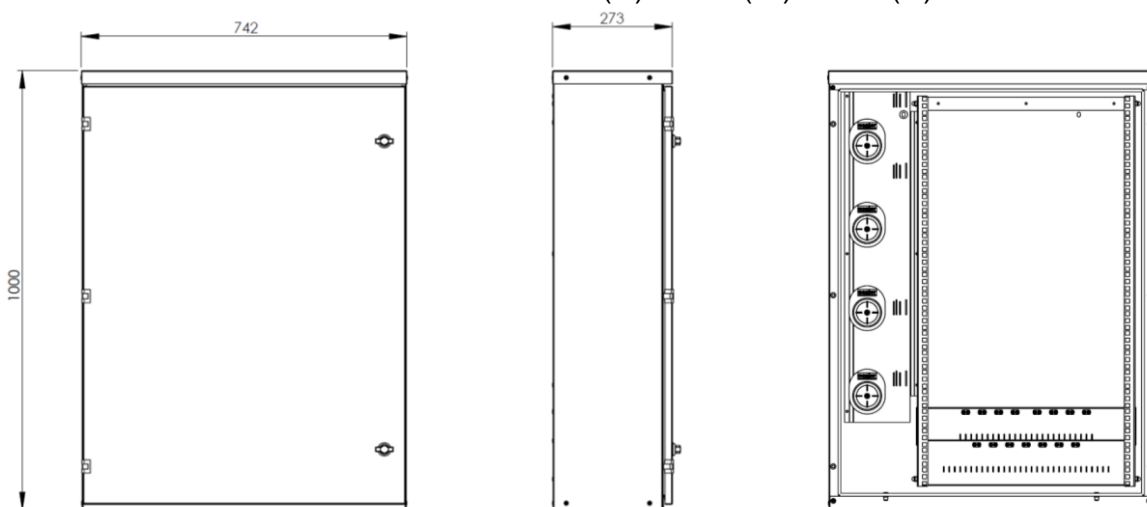
Splice cabinet combination K1 + NC-350 consists of a street distribution cabinet with an unheated cross-connection cabinet mounted inside. The cabinet combination is used for connecting splice modules, patch panels and splitter modules inside the optical network.

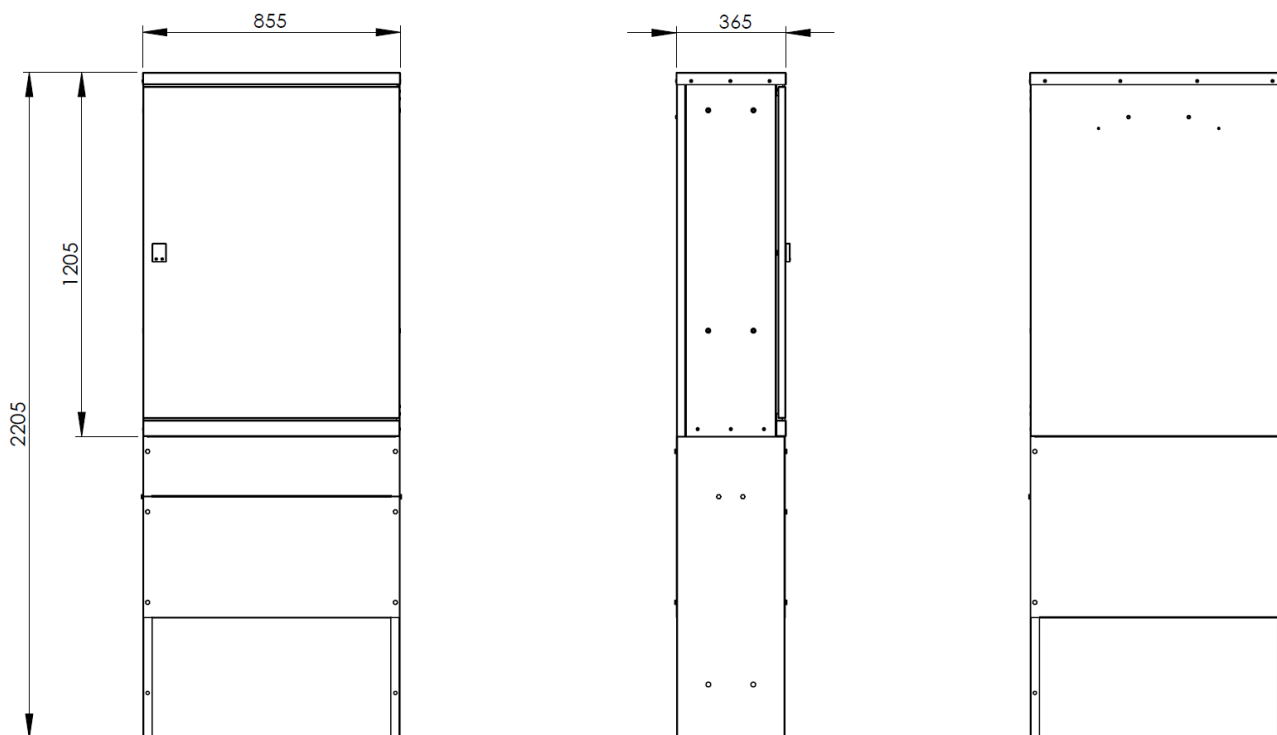
Features

- Splice cabinet combination for outdoor use, which includes an outdoor cabinet with a stand and a cross-connection cabinet
- Basic assembly
 - LV1334 K1 Street distribution cabinet for outdoor use with a stand
 - LV1653 NC-350 Cross-connection cabinet, installed inside the K1 cabinet
- The outer parts of the K1 cabinet are galvanized and powder-painted steel plate
 - Colour RAL 7008
- Cross-connection cabinet NC-350 is made of galvanized steel plate
 - Unpainted
- User-friendly and robust design
 - Dust-proof construction
 - 19" mounting racks inside the NC-350 cabinet with 12U space available for splice modules, patch panels and splitter modules
 - Slots for splice trays, 6 pcs
 - Wide space with cable guides for patch cords and fibre tubes
 - The inlets of the NC-350 cabinet are wide and equipped with bristle sealings, so it is easy to bring cables inside the cabinet
 - Mounting and grounding bars for incoming cables

Dimensions

- K1 cabinet with stand 2205 (H) x 855 (W) x 365 (D) mm
- NC-350 1000 (H) x 742 (W) x 273 (D) mm





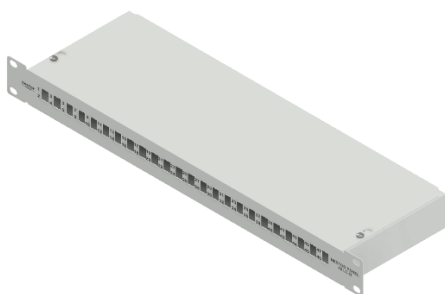
Optional accessories



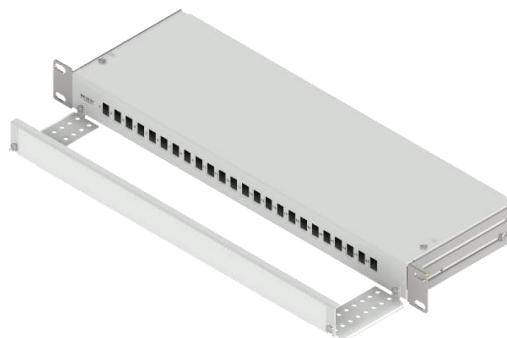
LV1581 NC-48S Universal Splice Tray



LV2265 NC-96 Universal Splice Tray



LV2493 Nestor Panel 48 LC-D



LV2595 Nestor Panel Plus 24 SC-S