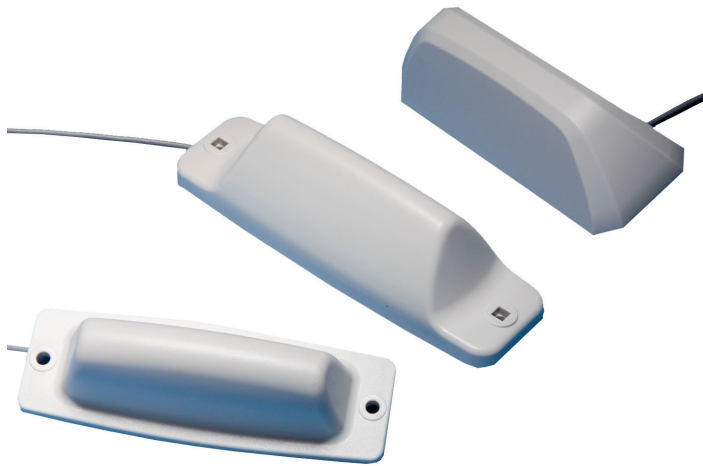


LP900 Series

The LP900 series, a low profile mobile phone antenna designed to meet the industrial demands on high RF-performance with multi installation capabilities. It's durable design and low profile makes it ideal to use where a discrete and reliable installation is required. The LP900 antenna is a ground plane independent antenna enabling a wide range of installations on different materials, perfect for M2M, WLAN and 4G applications.

- **Flexible multi band antenna**
- 850/900/1800/1900/2100/2400/2600 MHz
- **Excellent RF-performance**
- **Low profile and durable design**
- **According to Industry std.**
- **Ground plane independent enables easy installation**
- **Different versions available:**
installation with center screw
installation with two fixing screws with extra electrical isolation
- **Based upon Smarteq Wireless RF technology**
- **All versions RoHS compliant**



SMARTEQ™
■■■■■ antennas



LP900



LP901



LP902

Specifications

Electrical

Frequency	824-960/1710-2170/2400-2690MHz
Impedance	Nominal 50 ohm
Polarization	Linear vertical
VSWR	Low Band <2.5:1 High Band <2.5:1
Gain	868-960 MHz 0dBd (2,15 dBi) 1710-2170 MHz 2dBd (4,15dBi) 2400-2690 MHz 1dBd (3,15dBi)
Max Power	10W
DC short antenna	
Ground plane independent	
Extra electrical isolation according to SS-EN 61010 for LP901 and LP902	

Mechanical

Dimension	LP900: 136x48x42mm (LxWxH) LP901: 162x50x45mm (LxWxH) LP902: 140x52x45mm (LxWxH)
Weight	~100g
Installation	LP900 & LP901: 2 fixing screws LP902: center screw mount Max. material thickness 3,5 Installation hole diameter 16-19mm
Cable	RG316
Connector	SMA(m), other on request
Material	ASA, PC/ABS
Color	Grey, black on request
Water ingress	LP900: IP44, when installed LP901: IP65 / LP902: IP65, when installed

Product No, examples

1m cable	LP900G-10-01-01
1,5m cable	LP901G-15-01-01
1m cable	LP902G-10-01-01

Environmental

Temperature	-40°C to +85°C
-------------	----------------

Smarteq reserves the right to change specifications without prior notice.

550 021 F

Smarteq develops and supplies high-quality antennas and antenna systems for the wireless transfer of speech and data, communication to and from vehicles and machine to machine. Our staff is fully focused on developing high-performance antennas that will continue to set new standards of excellence that will exceed our customers' expectations

SMARTEQ™
antennas

Smarteq Wireless AB

Sweden

www.smarteq.com



Smarteq is certified according to
ISO/TS 16949, ISO 14001