

## Smart Managed L2 Switch 8-port Gigabit PoE + 2 SFP port (130W) GGM GS2008P2S



**GGM GS200** Web-managed Smart Switches series are designed to fit all the technical requirements of modern converged IP networks. Thanks to their large port versatility and their powerful Layer 2 features, **GGM GS200** Smart Switches can deal simultaneously with Multimedia streaming, Multicast flux, security and any other services that could need a large bandwidth amount.

**GGM GS200** Web-managed Smart Switches offer an affordable Gigabit non-blocking network.

### Advanced Layer 2 Features

With their very much advanced Layer 2 features, the **GGM GS200** Smart Switches can perfectly be integrated into modern IP Networks :

- Full network segmentation management with **VLAN**
- **QoS** features to optimize each IP flux
- Strong fault tolerance and redundancy with **Spanning Tree** technologies
- **Loopback** detection and quarantine of faulty links
- **Cable diagnostics** for an efficient network

### Strong network security

The **GGM GS200** Smart Switches serie comes with the most valuable security technologies to protect your network against intrusion :

- **802.1x RADIUS** authentication to ensure a reliable and strong users authentication on the network
- **ACL** feature to improve the network security and management
- **ARP packet inspection** to prevent ARP spoofing and networks hacking
- **DHCP Snooping** feature to prevent the use of rogue DHCP over the network

### GENERAL

Hardware description :

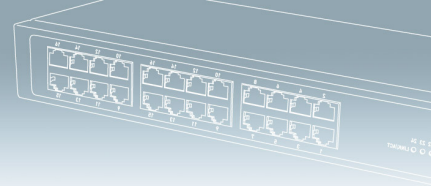
- **CPU : Microsemi (Vitesse)**
- **DRAM : 1Gb**
- **Flash Memory : 128Mb**
- **Fanless conception**

Port configuration :

- **8-port PoE/PoE+ Gigabit RJ45 10/100/1000Mbps compatible**
- **2-port Gigabit SFP 100/1000Mbps compatible**

PoE features :

- **802.3af (PoE 15.4W)**
- **802.3at (PoE+ 30W)**



## Hardware Features

- **Power Budget : 430W**
- **Switching bandwidth : 20Gbps non-blocking**
- **Forwarding performance : 14.88Mbps**
- **MAC Address : 8K**

## Certification

- **Jumbo Frames : 9216 Bytes**
- **EN61000-4-5 : RJ45 port Surge Protection 6KV**
- **CE / RoHS / Reach**

## LAYER 2 FEATURES

### Spanning Tree :

- **802.1D (STP)**
- **802.1W (RSTP)**
- **802.1S (MSTP)**

### VLAN :

- **802.1Q VLAN**
- **Port-Based VLAN**
- **VLAN entries : 4K**
- **Private VLAN**
- **Voice VLAN**
- **Guest VLAN**
- **Q-in-Q**
- **802.1v protocol VLAN**
- **MAC-Based VLAN**

### LACP :

- **Dynamic Trunk**

### QoS features :

- **Static Trunk**
- **Class of Service : Port-Based, 802.1p, DSCP, TCP/UDP port**
- **Rate Limiting : Ingress and Egress**
- **Priority Queue Scheduling : WRR and Strict Priority**

### Security :

- **Hardware Queues : 8**
- **ACLs : L2/L3/L4, IPv6 support**
- **Port security (MAC-Based)**
- **IP Source Guard**
- **Storm Control**
- **RADIUS Authentication 802.1x**
- **TACACS+ Authentication**
- **HTTPS and SSL**
- **BPDU Guard**
- **STP Root Guard**
- **ARP Inspection**
- **DHCP Snooping**

### L2 various :

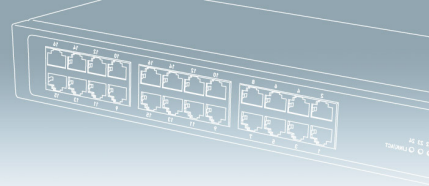
- **Loopback protection**
- **GARP / GVRP**
- **IGMP Snooping**
- **MLD Snooping**
- **DHCP Server**

## MANAGEMENT

### Management Features :

- **DHCP Client/Relay, Option 66/67/82**
- **Event/Error syslog**
- **Management Access Filtering : SNMP, Web UI, Telnet and SSH**
- **PoE Management : PoE scheduling and auto-checking**
- **SNMP v1, v2c and v3**
- **RMON 1, 2, 3 and 9 groups**
- **Software Upgrade**
- **Configuration Import / Export**
- **SFP DDM(SFF-8472)**
- **Port Mirroring**
- **Thermal Protection**
- **LLDP (802.1AB)**
- **IPv6 Management**

### Switch Management :



- **Monitoring : WEB GUI, SNMP and CLI (Cisco-like)**
- **Cable Diagnostics**