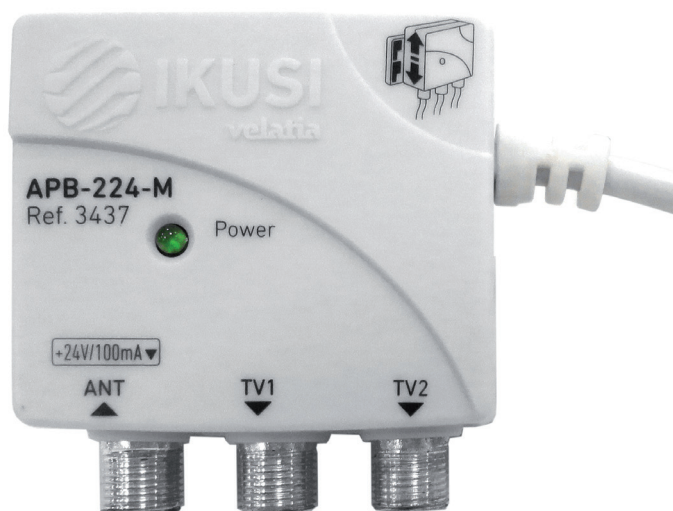
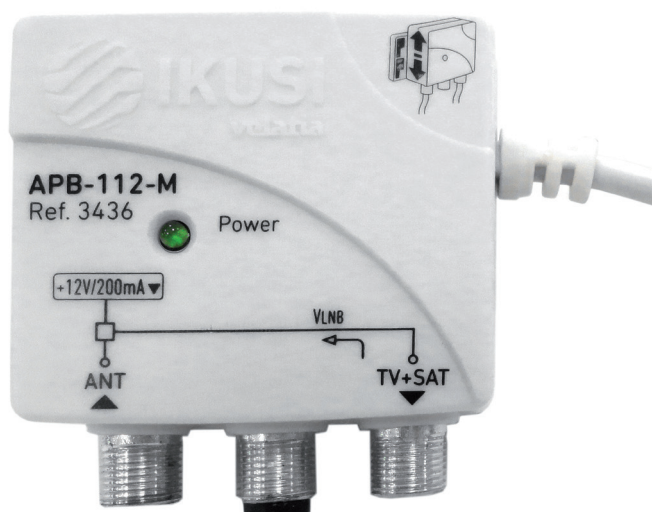


Power supplies “micro” APB series

Switch mode power supplies for mast amplifiers.
Smaller size with terrestrial and satellite inputs.



Optimum power consumption



Adaptable to standard boxes

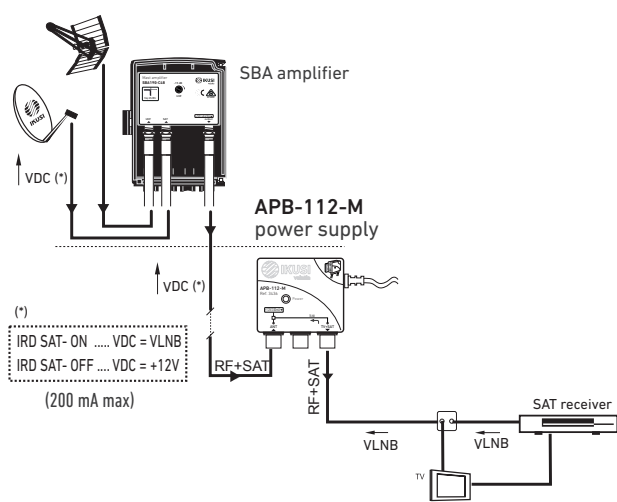


Fastening without tools

MODEL	APB-112-M	
REF.	3436	
EAN code	8435136434368	
Regulation type	switch mode	
Output	1	
Mains voltage (50 Hz)	VAC	100 - 240
Output voltage	VDC	+12 (±5%)
Max. output current	mA	200
Frequency range	MHz	47 - 2400
RF insertion loss	dB	≤ 1.5
Current pass through	mA	300
Efficiency	%	>70
Dimensions	mm	50 x 50 x 25

MODEL	APB-224-M	
REF.	3437	
EAN code	8435136434375	
Regulation type	switch mode	
Outputs	2	
Mains voltage (50 Hz)	VAC	100 - 240
Output voltage	VDC	+24 (±5%)
Max. output current	mA	100
Frequency range	MHz	47 - 862
RF insertion loss	dB	≤ 4
Efficiency	%	>70
Dimensions	mm	50 x 50 x 25

APB-112-M Application example

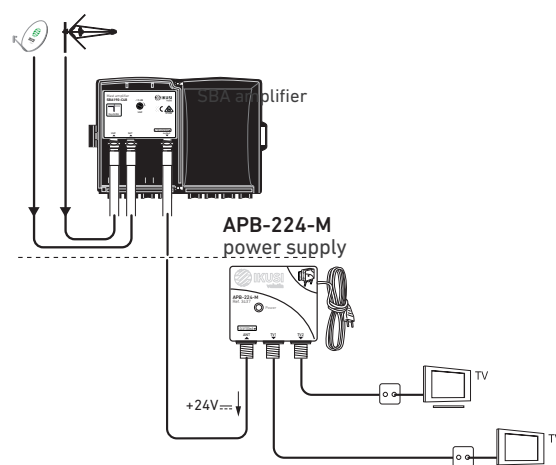


How the APB-112-M works

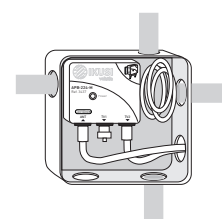
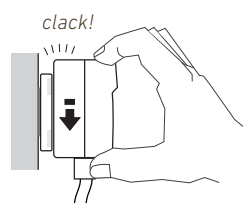
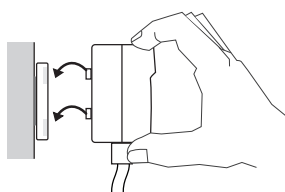
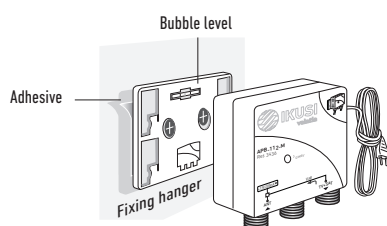
When the user's SAT receiver is OFF or stand-by, the APB-112-M power supply operates normally, providing +12V voltage for the mast-head preamplifier (and also, attention, for the attached LNB). When the SAT receiver is switched ON, the APB-112-M comes automatically to stand-by and let pass the voltage/tone signals coming from the receiver, so that the LNB as well as the SBA190 preamplifier are powered by the SAT receiver.

- The smallest on the market.
- It allows installation in any junction box.
- Optimum power consumption. Low power switch mode.
- Mounting without tools.
- 1RF input connector + DC output port / 1 or 2 RF outputs ports.

APB-224-M Application example



Wall fixing system



Adaptable to standard boxes 80x80 mm