

# KanexPro®

## 4K USB 2.0 Gaming Capture with HDMI Loop-out



## Quick Installation Guide

Ver. 1.0

All brand names and trademarks are properties of their respective owners

## INTRODUCTION:

The KanexPro CON-GAMECAPL is a video capture device that can capture both HDMI video and HDMI audio, sending audio and video signals to a computer in order to preview or record video content. This model features an HDMI loop-out so that Suitable for video game console capture, educational recordings, medical imaging, or streaming with the use of an action camera.

## FEATURES:

- Support input max resolution 3840x2160@30Hz;
- Support output max resolution 1920x1080@30Hz;
- Support 8/10/12bit deep color;
- Supports most video recording and streaming software, such as VLC, OBS, Debut, etc;
- Support Windows, Android and MacOS;
- Conform to USB Video and UVC standard;
- Conform to USB Audio UAC standard;
- No need for an external power supply, USB bus powered for a compact and portable solution. penguin

## PACKAGE CONTENTS:

- 1x Main Unit
- 1x User Manual
- 1x Micro USB cable
- 1x USB cable male to male
- 1x HDMI cable male to male
- 1x Type-C USB3.1 Male to USB 2.0 Female Connector

## APPLICATION OPTIONS:



1. Connect the UHD signal source to the HDMI input of the video capture with the included HDMI cable.
2. Connect the CON-GAMECAPL directly into a USB port on the computer using the included Male to Male USB Cable.
3. Connect the HDMI Output port to a Display using an HDMI Cable.

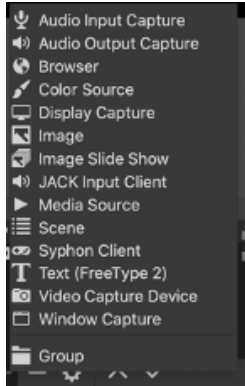
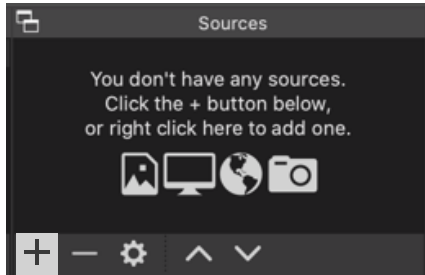
### 4. Getting Started:

The CON-GAMECAPL is compatible with various video recording and streaming applications. You can choose any of the popular programs like VLC, Debut, or OBS Studio (<https://obsproject.com/>).

KanexPro recommends OBS Studio for its simplicity and ease of use.

Open OBS Studio:

1. →Add Sources:



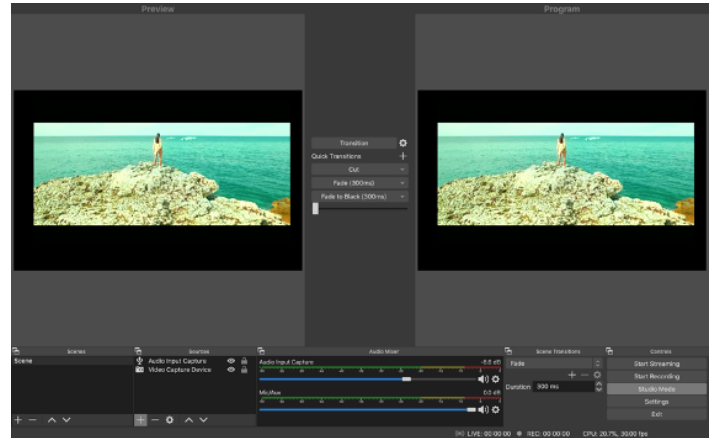
“Video Capture Device” -> USB Camera

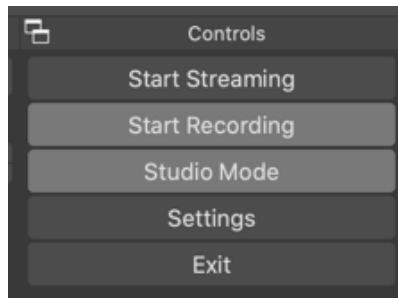


“Audio Input Capture” -> USB Digital Audio



2. Select either Recording or Streaming Mode
  - a. Follow the on-screen prompts
3. Choose “Studio Mode” (double window)





## SPECIFICATIONS:

HDMI resolution ..... Max input can be 4K  
Support video format ..... 8/10/12bit Deep color  
Video output format ..... YUV, JPEG  
Video output resolution ..... Max output can be 1080P  
Support audio format ..... L-PCM  
Input cable distance ..... ≤15m, AWG26

HDMI standard cable

Max working current ..... 0.7A/5VDC  
Operating Temperature range ..... (-10 to +55°)  
Dimension (L x W x H) ..... 60x58x22 (mm)  
Weight ..... 52g